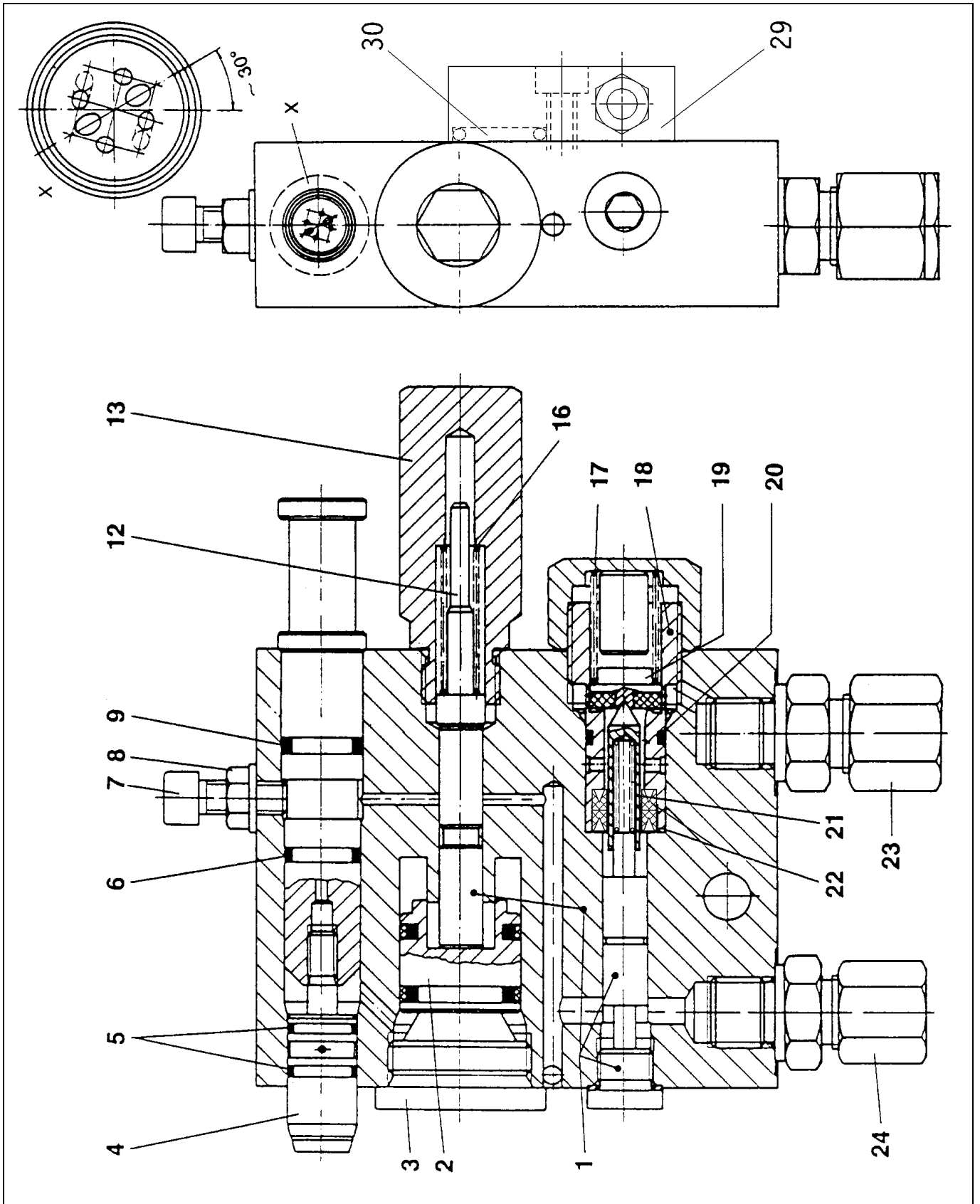


# Data Sheet

Wide-angle Spray Nozzle with Control Valve Model SDLHNR-G (HSA-TD 30)  
Part-No. 615-27583-2



3.3A-30007-B96



# Data Sheet

Wide-angle Spray Nozzle with Control Valve Model SDLHNR-G (HSA-TD 30)  
Part-No. 615-27583-2



3.3A-30007-B96

## Spare parts list

| Item | Designation  | Qty. | Part Number |
|------|--|------|-------------|
| 1    | spray nozzle block with precision-fitted piston consisting of:<br>block<br>valve piston<br>control piston<br>closure plug<br>gasket  | 1    | 515-30999-1 |
| 2    | air piston with 2 sealing rings  | 1    | 515-30889-1 |
| 3    | closure plug M 26 x 1,5  | 1    | 303-17411-1 |
| 4    | nozzle insert with holder includ. items 5, 6, 9  | 1    | 515-31698-1 |
| 5    | O-ring 10 x 1,5  | 2    | 219-12228-5 |
| 6    | O-ring 10 x 2  | 1    | 219-13064-3 |
| 7    | hexagon socket head screw M 6 x 16   | 1    | 201-12019-9 |
| 8    | hexagon flange nut M 6   | 1    | 207-12473-1 |
| 9    | O-ring 10 x 2,5  | 1    | 219-12228-6 |
| 12   | indicator pin  | 1    | 415-23621-2 |
| 13   | locking piece  | 1    | 415-23623-2 |
| 16   | compression spring 6,8 x 1 x 35  | 1    | 300-17207-1 |
| 17   | compression spring 12 x 1,25 x 34  | 1    | 300-17218-1 |
| 18   | air valve assembly consisting of:<br>spring guide<br>U-cup sealing ring<br>compression spring<br>O-ring<br>valve sleeve<br>valve plate assembly<br>compression spring<br>stop<br>closure cap | 1    | 515-30903-1 |
| 19   | valve plate assembly   | 1    | 515-31051-1 |
| 20   | O-ring 11 x2   | 1    | 219-12223-4 |
| 21   | compression spring 4,5 x 0,9 x 15,6  | 1    | 218-12588-2 |
| 22   | U-cup sealing ring 6 x 12 x 4 x 2  | 2    | 220-12512-8 |
| 23   | tube fitting GE 8 S G 1/4 AC   | 1    | 223-12477-2 |
| 24   | tube fitting GE 6 S G 1/4 AC   | 1    | 223-12477-1 |
| 29   | collector assembly with screws and O-ring  | 1    | 515-32033-1 |
| 30   | O-ring 8 x 2   | 1    | 219-12222-8 |
|      | kit of seals<br>(consisting of items: 5, 6, 8, 9, 20, 22, 30)  |      | 515-36083-6 |