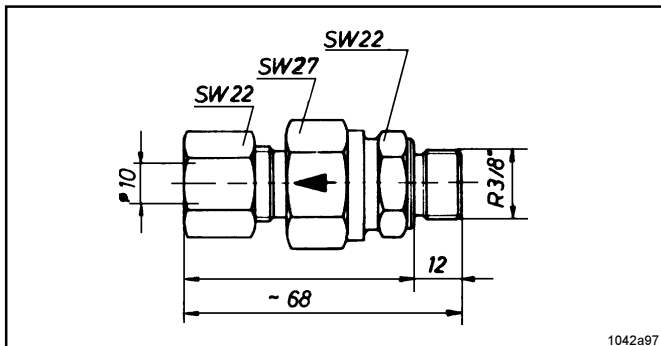
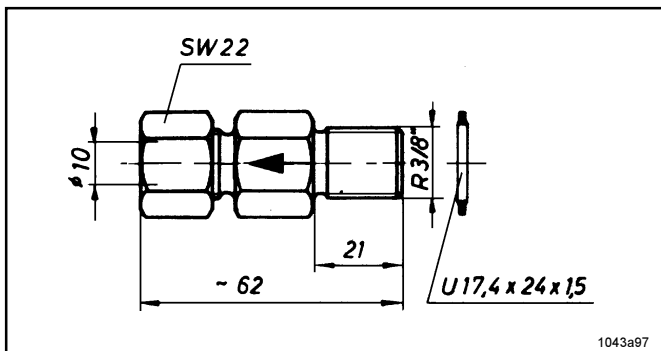


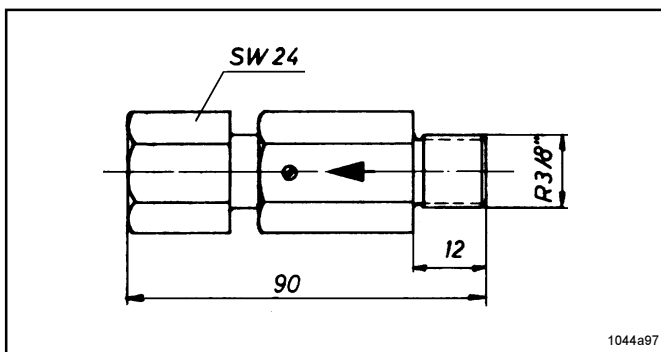
Outlet Check Valves and Safety Valves



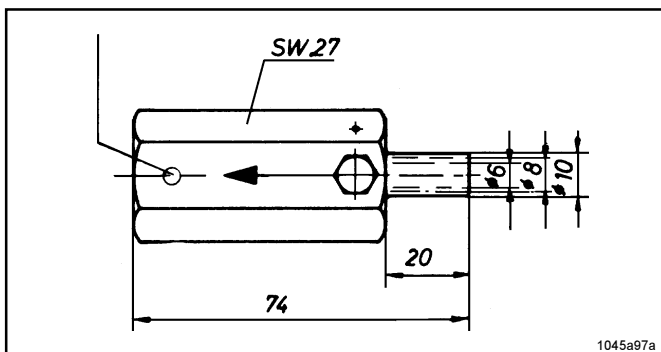
Description	Part-No.
Outlet Check Valve for grease lubrication pumps	505-30447-1



Outlet Check valve for oil pumps	624-25484-1
----------------------------------	-------------



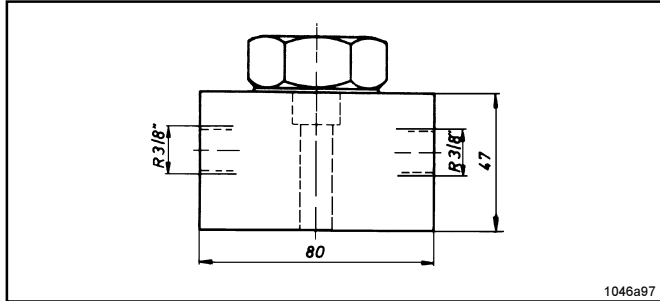
Safety valve for central lubrication pumps	120 bar 624-25465-1
	300 bar 624-25466-1
	350 bar 624-25294-1
	380 bar 624-25467-1
	410 bar 624-27092-1



Safety valve with test plug for central lubrication systems	6 Ø 200 bar 624-25478-1
	350 bar 624-25479-1
	8 Ø 200 bar 624-25480-1
	350 bar 624-25481-1
	10 Ø 200 bar 624-25482-1
	350 bar 624-25483-1

Subject to modifications

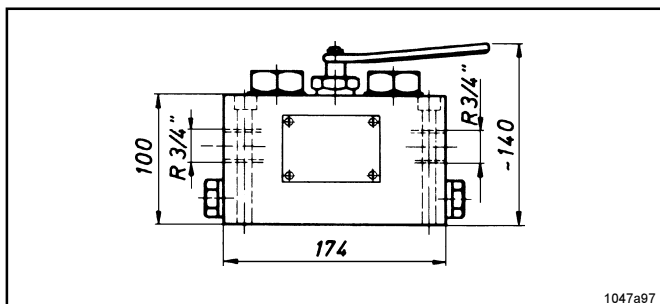
Nominal pressure 400 bar (at outlet check valve)
 Opening pressure 1 bar (at outlet check valves)
 Temperature Range -20°C bis +90°C



1046a97

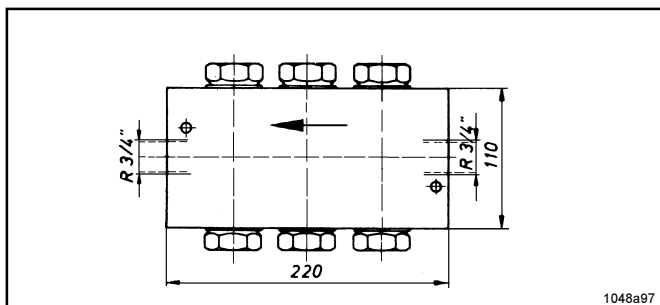
Lubricant filter	Part-No.
------------------	----------

single	628-25531-2
--------	-------------



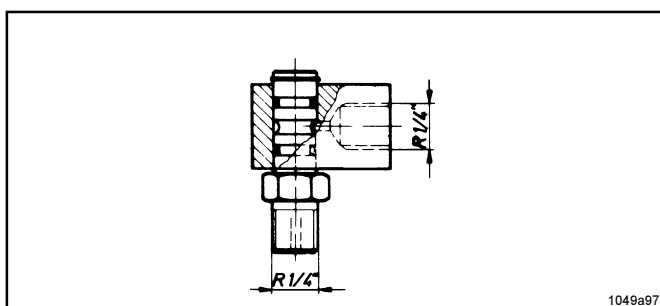
1047a97

double reversible	628-25709-1
-------------------	-------------



1048a97

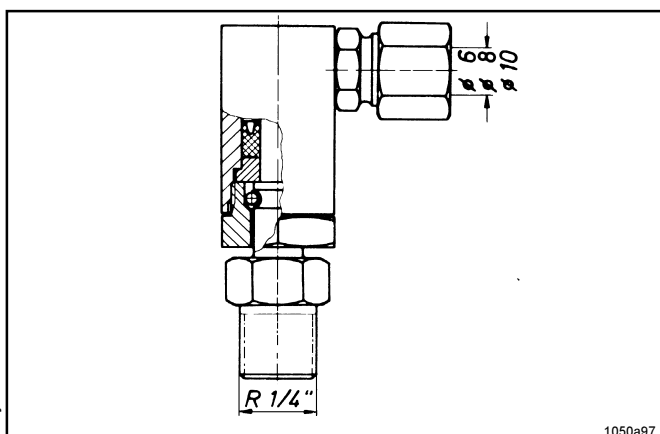
6-fold	628-26115-2
--------	-------------



1049a97

Lubricant swivel	Part-No.
------------------	----------

90° - angle swivel NW 3 - ND 100	626-25702-1
----------------------------------	-------------



1050a97

Swivel	Part-No.
--------	----------

90° - angle swivel NW 3 - ND 200	
Ø 6	626-25717-2
Ø 8	626-25718-2
Ø 10	626-25719-2

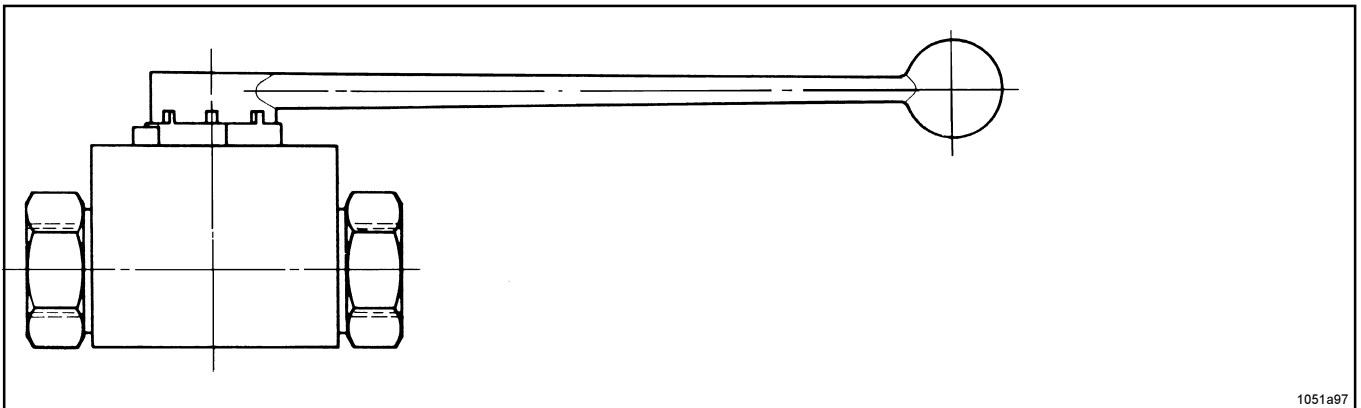
Subject to modifications

Mounting parts for high-pressure centralized lubrication systems

shut - off valve

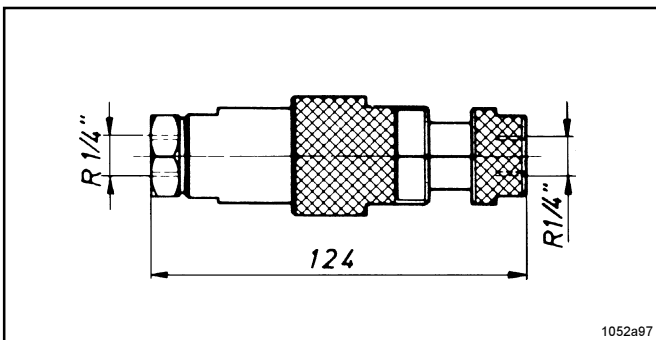
Part-No.

single - pole	
R 1/2"	
NW 13 - ND 300	235-13108-4
R 3/4"	
NW 20 - ND 250	235-18108-5



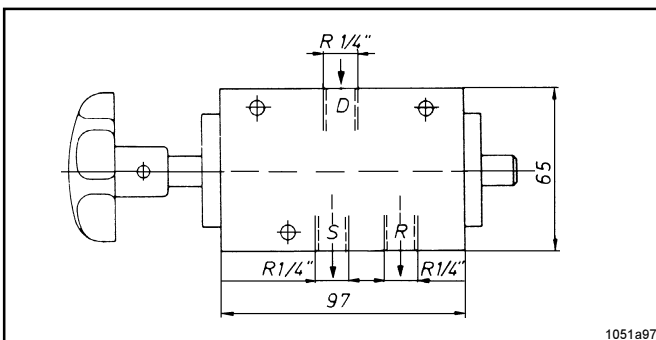
quick - release coupling

NW 5.8 - ND 300	626-25710-1
-----------------	-------------



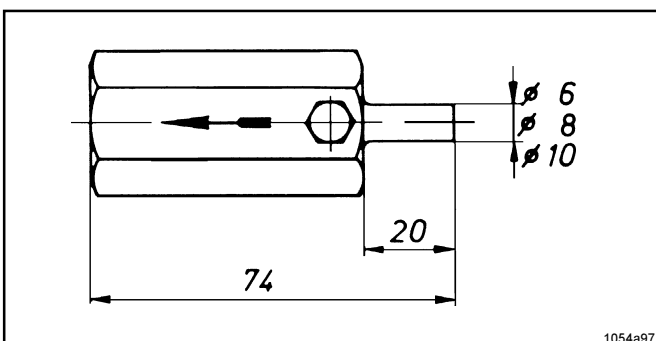
3 - way slide valve

manually operated	
NW 3.2 - ND 300	625-25706-1



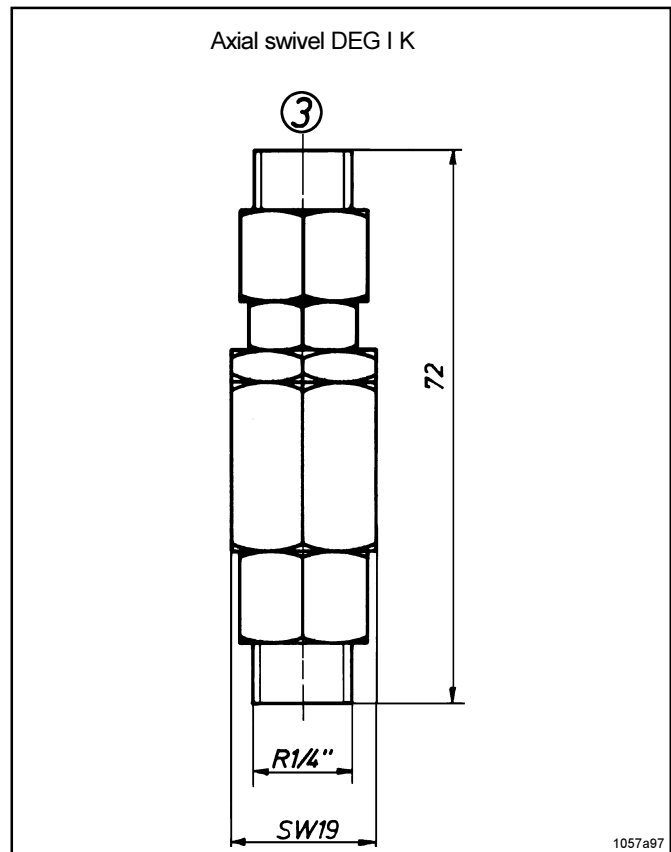
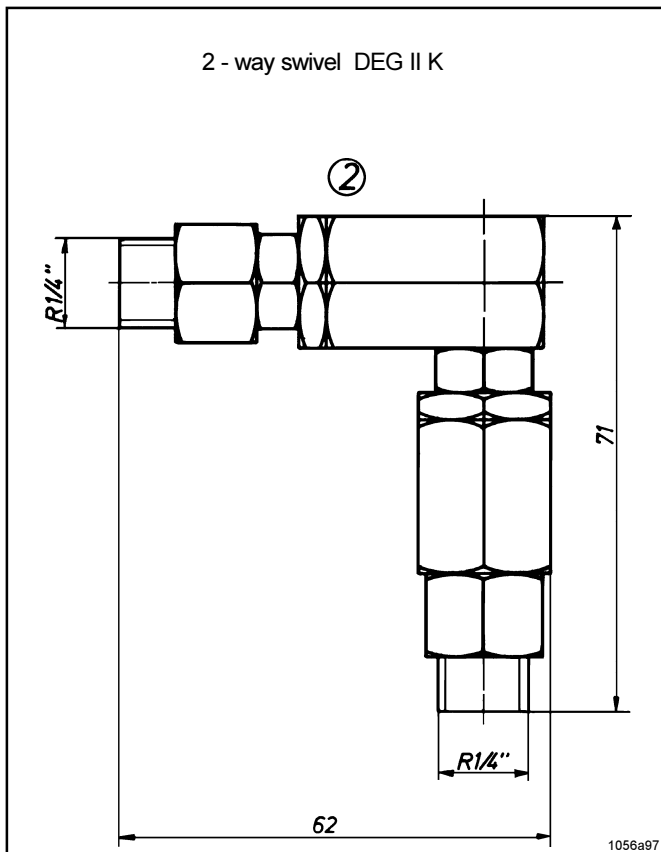
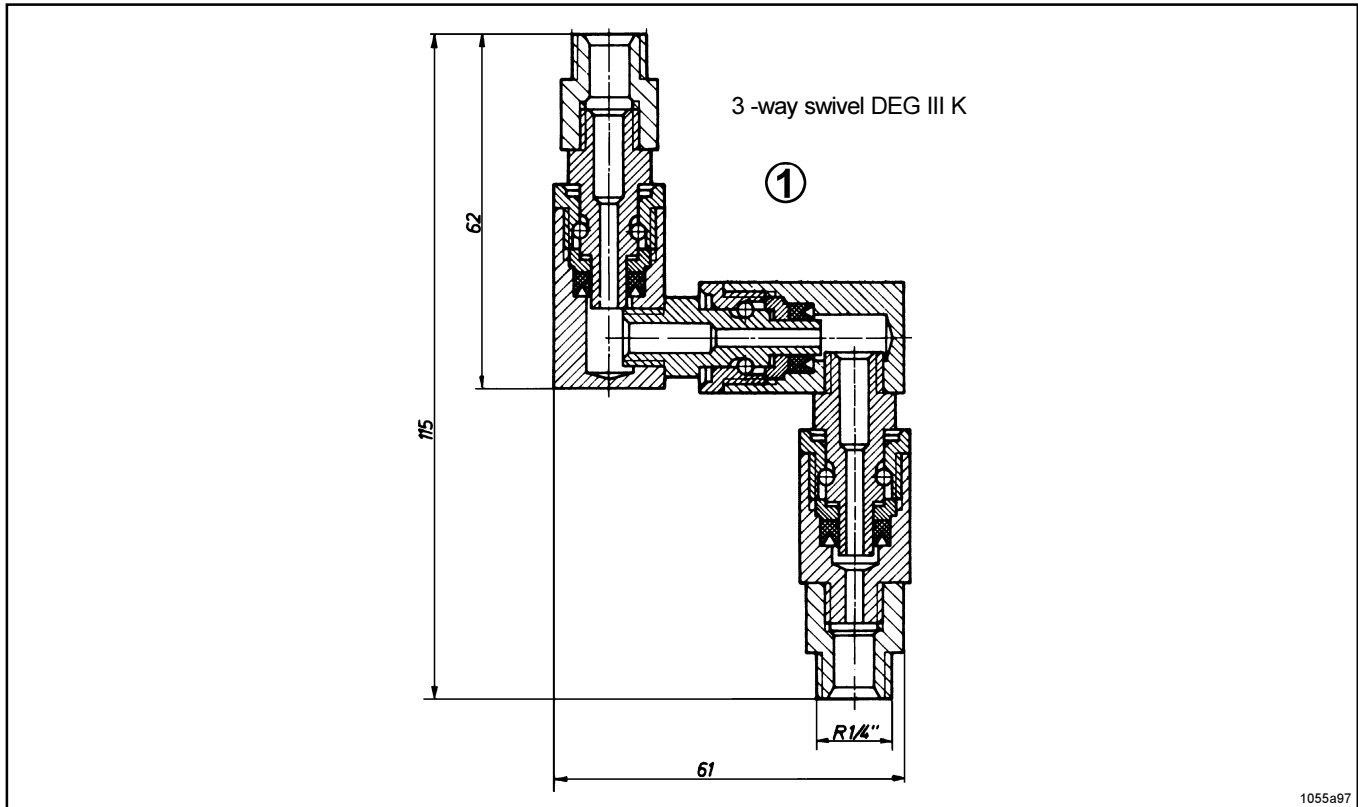
safety valve with test screw

∅ 6	ND 200	624-25278-1
∅ 6	ND 350	624-25479-1
∅ 8	ND 200	624-25480-1
∅ 8	ND 350	624-25481-1
∅ 10	ND 200	624-25482-1
∅ 10	ND 350	624-25483-1

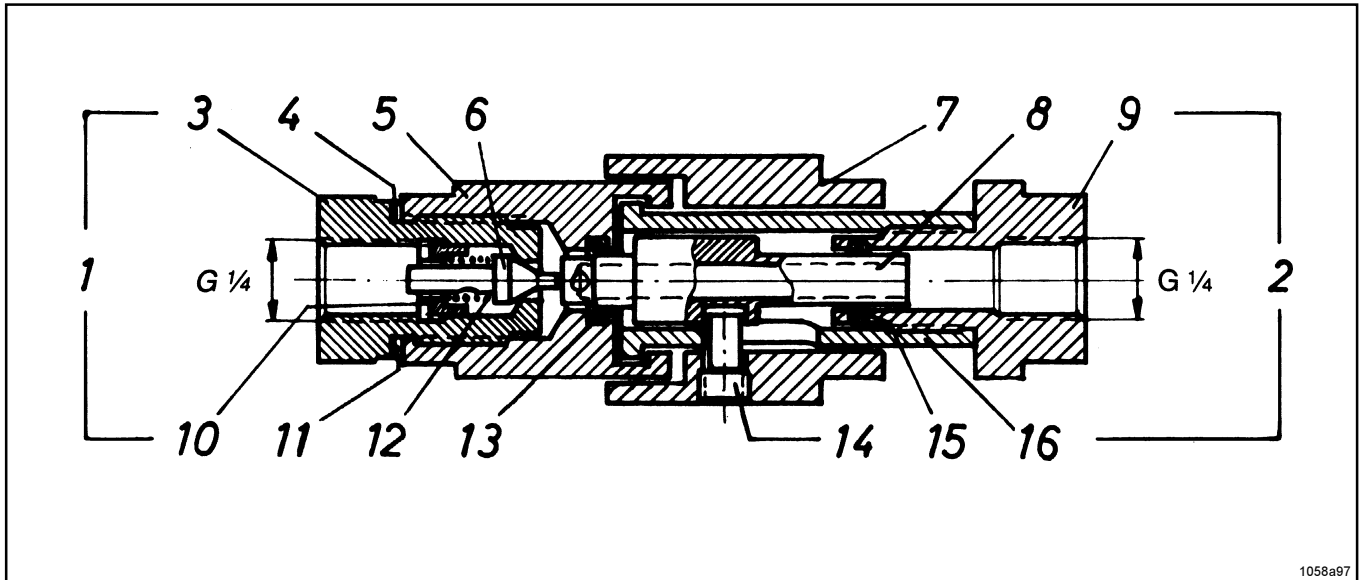


Subject to modifications

Lubricating swivels with connection thread R 1/4" outside



Lincoln Helios quick-action coupling ESK



1058a97

Item	Description	Part-No.
1	Coupling half with valve element Item 3,4,5,6,10,12,1,3	526-31508-1
2	Swivel coupling half with locking ring Item 7,8,9,14,15,16,	526-31507-1
3	Valve seat	426-21281-1
4	Spacing ring	318-18723-1
5	Valve body	426-21480-1
6	Sealing cone	425-21430-1
7	Locking ring	426-21485-1
8	Plunger	310-18253-1
9	Adaptor body	426-21482-1
10	Screw ring	303-17543-1
11	Sealing washer	306-17826-1
12	Compression spring	300-17206-1
13	O-ring 9,5 x 2,4	219-12223-1
14	Guide pin	426-21484-1
15	O-ring 8 x 2	219-12222-8
16	Coupling body	426-21483-1

The **Lincoln-Helios** quick-action coupling is equipped with a valve (composed if items 3, 6, 10, and 12) which opens when the coupling is locked into position (locking ring (7) turned to the right) and which shuts when the coupling is loosened (locking ring turned to the left). The cross section drawing shows the locking ring pushed forward but not yet locked into position (that is, prior to being turned to the right). The valve is therefore still closed.

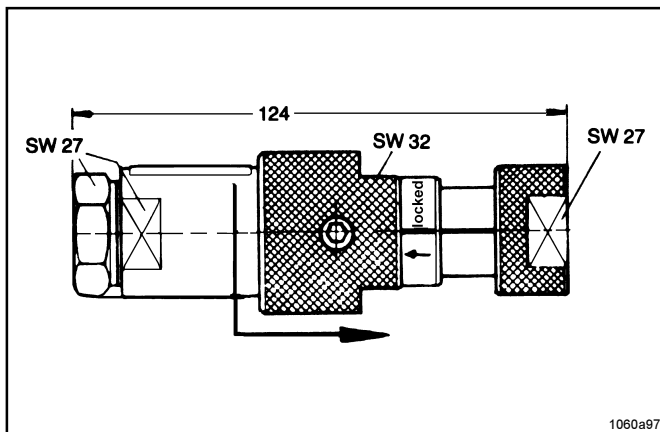
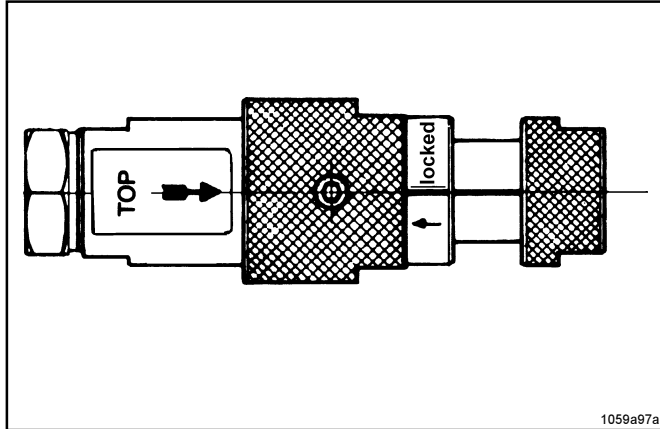
Subject to modifications

Lincoln-Helios quick-action coupling ESK

Technical data:

Length: 124 mm
Operational pressure: 300 bar
The quick-action coupling can be locked and unlocked by hand at pressures up to 300 bar.
Connecting thread 1/4" BSP f
NW 5.8

Largest diameter: 40 mm

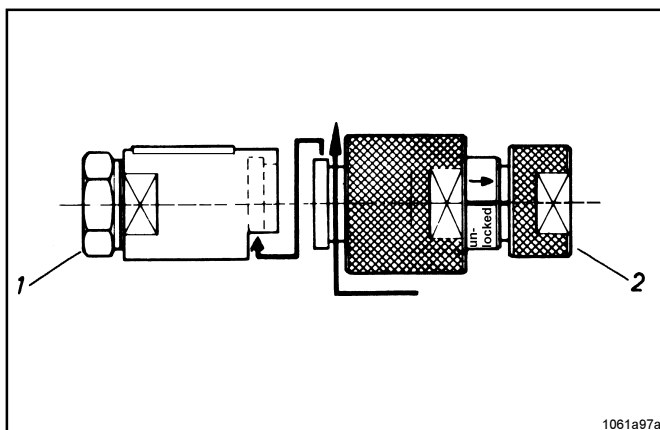


Instructions for operation:

When the quick-action coupling is being locked and unlocked, the adaptor body (9) must be held still.

Unlocking:

Turn the locking ring (7) to the left and draw it back in the direction of the arrow. Unhook the swivel coupling half with locking ring by a downward movement.



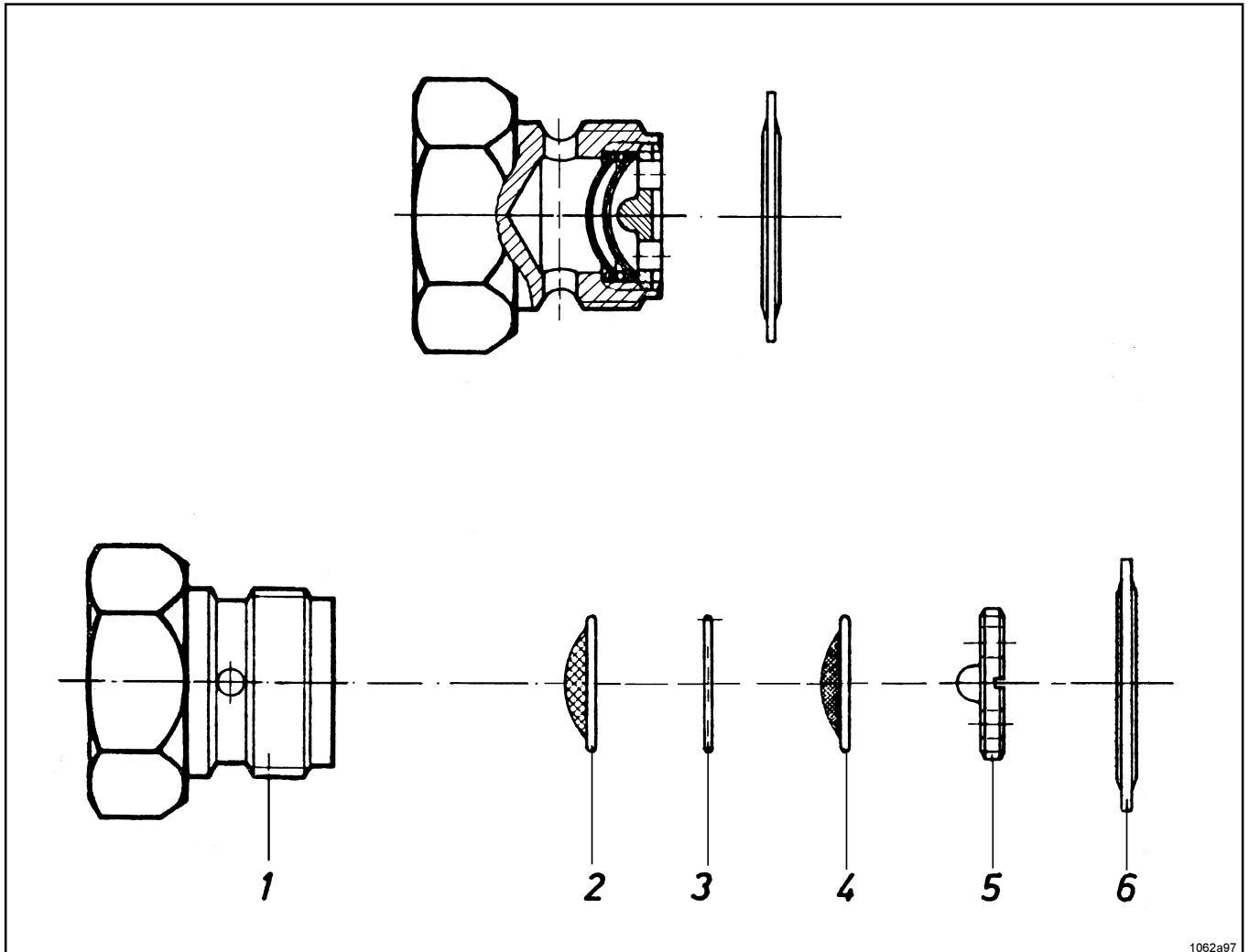
Locking into position:

Hook the swivel coupling half with locking ring (2) into the coupling body with valve element (1) from below.

Push locking ring (7) forwards in the direction of the arrow.

Turn locking ring to the right .

Strainer assembly for high-pressure centralized lubrication systems



1062a97

Item	Description	Part-No.
1	Hollow screw	428-21543-2
2	Coarse strainer	428-21544-1
3	Spacing ring	428-21546-2
4	Fine strainer	428-21545-1
5	Threaded ring	303-17546-1
6	Sealing ring	220-12238-3

Subject to modifications

Strainer assembly for high-pressure centralized lubrication systems

Instructions for cleaning

1. Unscrew the strainer assembly 628-25463-1 by using a wrench SW 41
2. Remove sealing ring 220-12238-3, paying attention to sealing lips.
3. Clamp strainer assembly in vice with the inside towards the top.
4. Screw out the threaded ring 303-17546-1 with screw driver.
5. Remove fine strainer 428-21545-1, spacing ring 428-21546-2 and coarse strainer 428-21544-1. Cleanse all parts thoroughly or, if necessary, replace them.
6. Reassemble the strainer assembly according to the drawing. Note the position of the two strainers. Before screwing in the strainer assembly, check whether the sealing surfaces are clean. Put sealing ring 220-12238-3 in position. Screw in strainer assembly and tighten with wrench.