

Model 110 VAC Part No. 253-14076-6 & Model 230 VAC Part No. 253-14076-7

Catalog

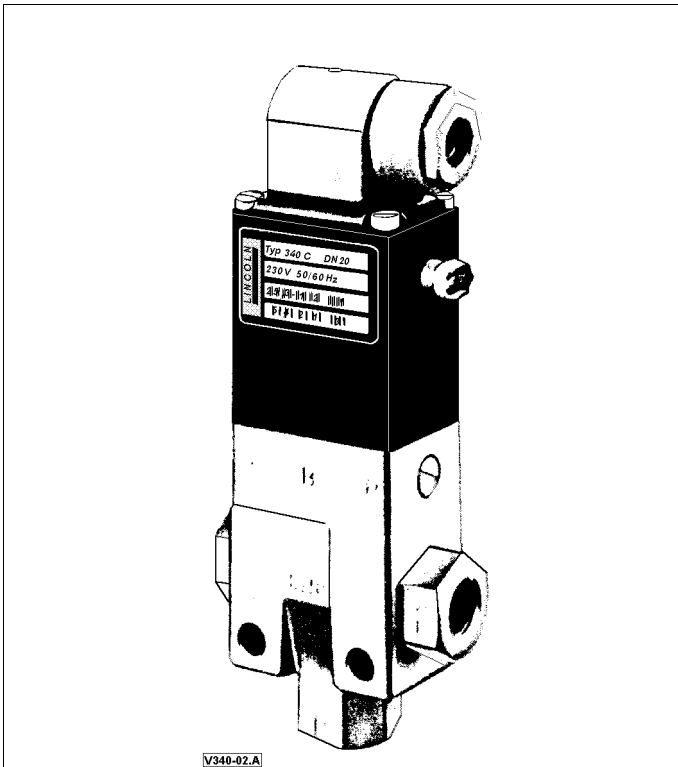
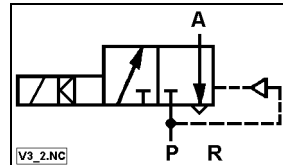


Fig. 3/2-Way Solenoid Valve with plug

3/2-Way Solenoid Valve for compressed air, normally closed and port 'A' vented. Servo-assisted 3-way solenoid valve with servo piston; armature-attracted servo mechanism. Lockable manual operation in standard design. Solenoid compartment separated from the operating medium by a separating diaphragm. The solenoid is enclosed with epoxy resin. This material is optimally suitable for discharging the coil heat. The solenoid valve is available for an operating voltage of 110-120 VAC or 220-240 VAC. For technical data, see table. Plug-in connection to DIN 43 650/ISO 4400. *Note:* The plug is not included in the delivery and must be ordered separately on demand. Prewired plug with protective circuit and LED, 3-core wire, 3 m long:
 Plug 110-120 VAC Part no. 236-13869-3
 Plug 220-240 VAC Part no. 236-13869-4



schematic symbol

Technical Data			
<i>Characteristic values</i>		<i>Drive</i>	
Nominal width	DN12	Operating voltage	
Pressure range	0,5 bar to 16 bar	Valve no. 253-14076-6	110-120 VAC
Flow rate (air) QNn	2800 l/min	Valve no. 253-14076-7	220-240 VAC
Line connection	G ½ ISO 228	Voltage tolerance	± 5 %
Weight	1,2 kg	Frequency	50/60 Hz
<i>Valve</i>		Power input	Pick-up Operation
Mounting position	any position		30 VA 15 VA
Materials	Gaskets Valve housing	Nominal mode	100% duty cycle
	NBR brass	Switching frequency	approx. 1000 op./min
Temperature (medium)	0° C to +90° C	Connection	DIN 43 650 / ISO 4400
Ambient temperature	max. +55° C	Protection class (w. plug)	IP 65
Operating times	open close	Plug	refer to note above
	25-120 ms 25-120 ms	<i>For dimensions, see next page</i>	

Notes on the flow rate

Flow rate measured at a supply overpressure of 6 bar and a pressure drop of 1 bar at the valve at a temperature of + 20°C.

The exhaust port R is one nominal width larger and is thus G3/4; therefore, the flow rate from A to R is increased 1,5 to 2 times.

Note on the pressure range

For faultless change-over, a minimum differential pressure of 0,5 bar is necessary.

Model 110 VAC Part No. 253-14076-6 & Model 230 VAC Part No. 253-14076-7

Catalog

Dimensions

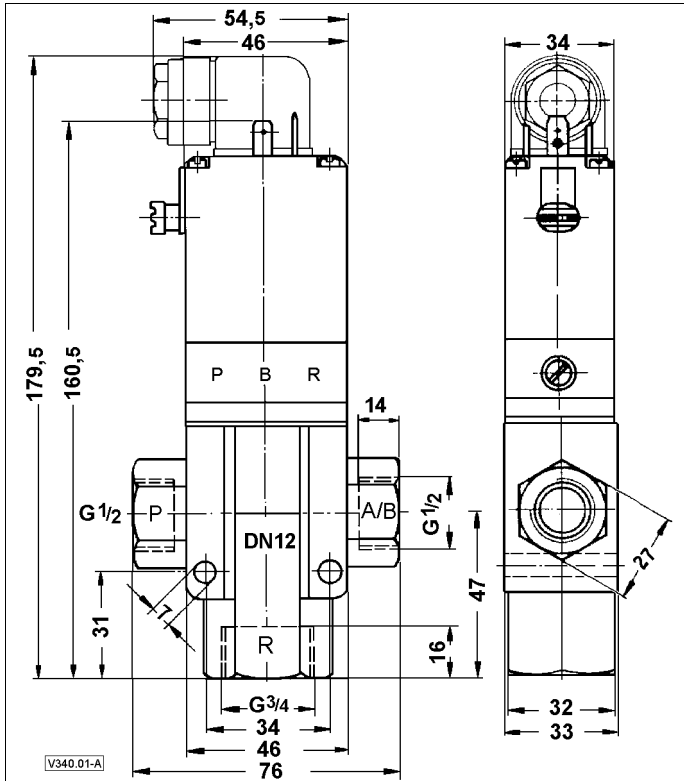
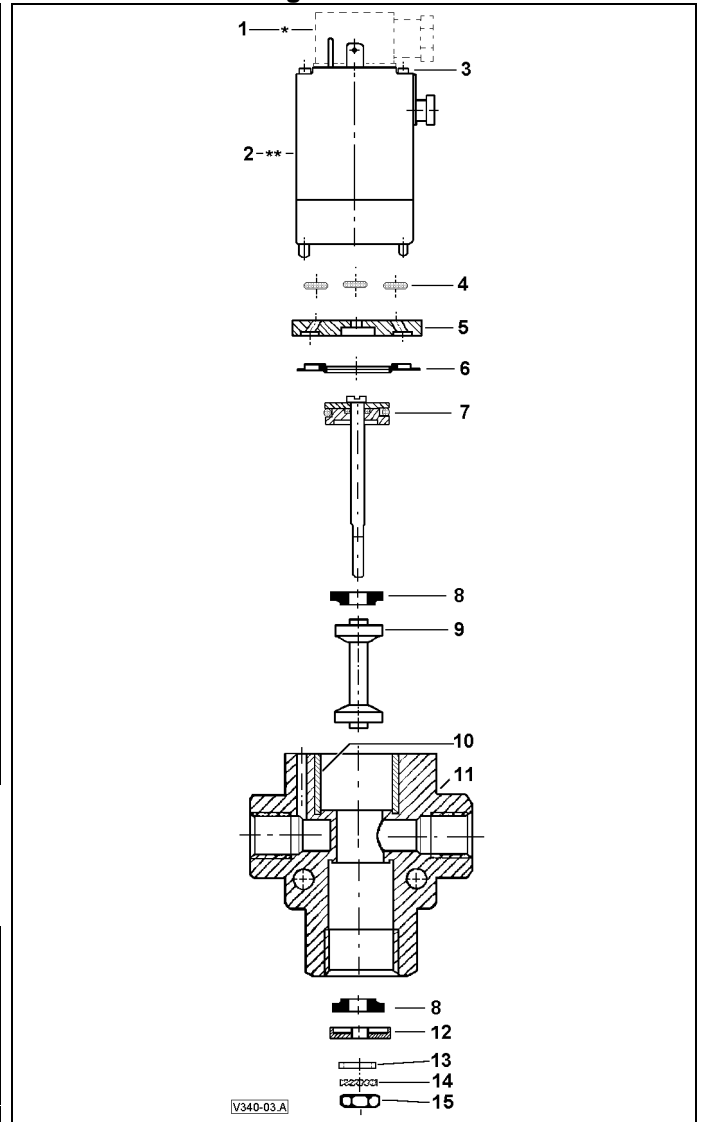


Figure including electrical plug DIN 43650
Note: Plug not included in delivery

Service Parts Drawing



Note

The spare parts drawing only serves for reference and spare parts orders by the repair shop entrusted with repair works. For spare parts orders, please also indicate the part number, voltage, current type and nominal width of the 3/2-way solenoid valve.

Parts List

Item	Description		Qty.
1	Plug	DIN 43 650	*
2	3/2-way pilot valve	Type C (**)	1
3	Pan head screw M4x82	DIN 84 -4.8 A2L	2
4	O-ring 6 x 1,5	NBR 75 B	3
5	Flange		1
6	Profile packing		1
7	Packing support assy.		1
8	Gasket	NBR (B)	2
9	Supporting sleeve		1
10	Sliding sleeve		1
11	Housing		1
12	Cover plate		1
13	Washer A 5.3	DIN 125 Ms	1
14	Tooth-lock washer A 5.3	DIN 6797 Sn Bz	1
15	Hex. nut M5x0,5	DIN 934 Ms	1

Note on the plug-in connection to DIN 43 650/ISO 4400

* The plug is not included in the delivery.

Prewired plug with protective circuit and LED, 3-core cable, 3 m long:

Plug 110-120 VAC Part no. 236-13869-3

Plug 220-240 VAC Part no. 236-13869-4

Note on the 3/2-way pilot valve

** For spare parts orders, please indicate the part number, voltage, current type and nominal width of the 3/2-way solenoid valve.

Safety Instructions



Any electrical works shall be carried out by skilled electrician only. For connection and commissioning, also observe the operating instructions of the control and connected devices.