

(400 LB. DRUM SIZE)

SPECIFICATIONS

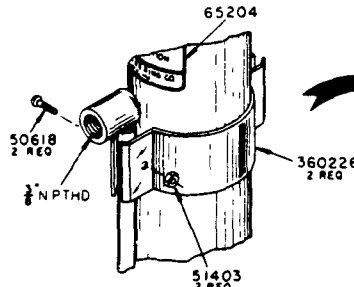
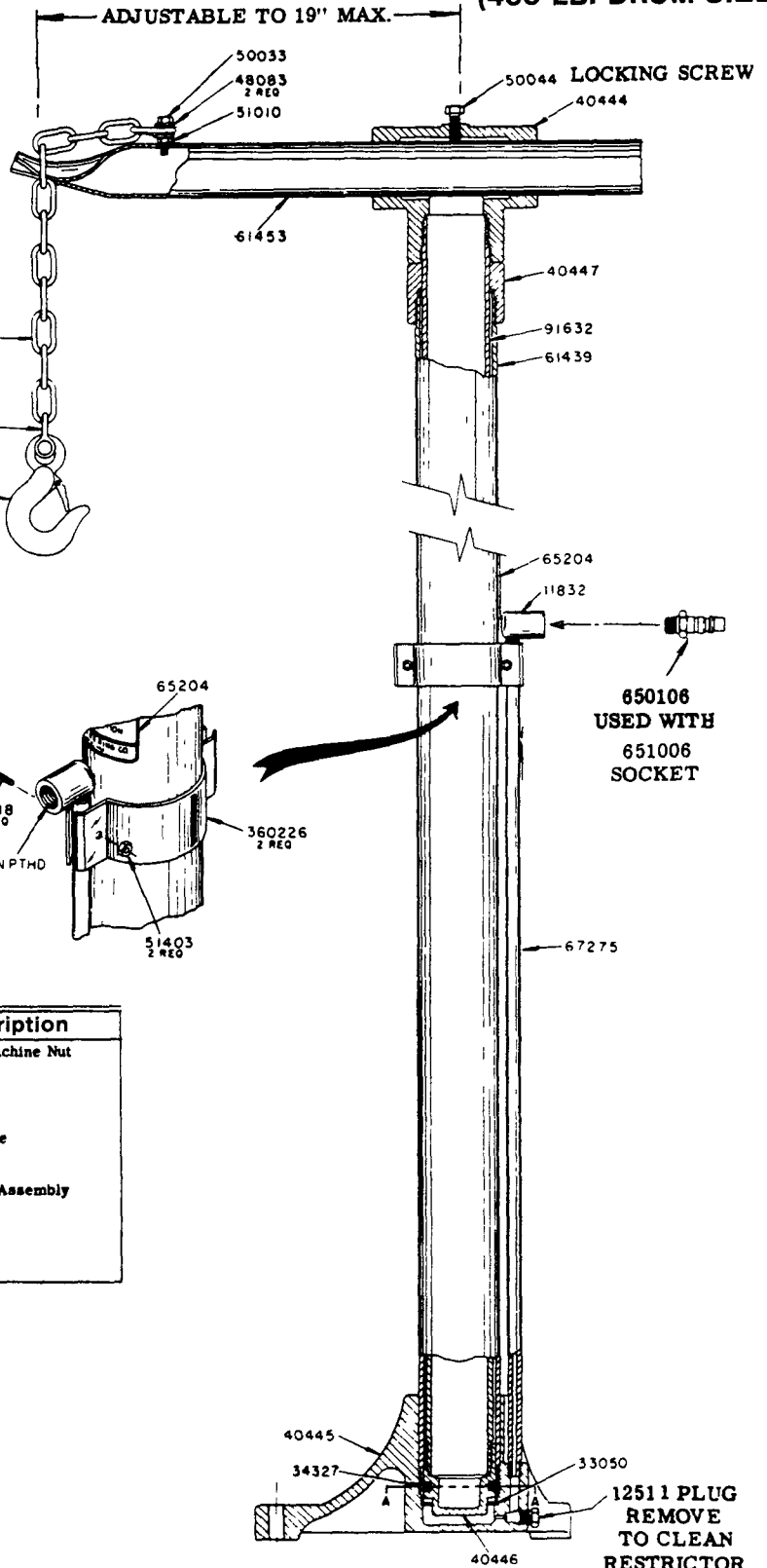
HEIGHT LOWERED - 70½"
HEIGHT RAISED - 108½"
LIFT CAPACITY - 400 LBS. MAX.
ROTATION - 360°

OPERATING AIR PRESSURE
50 P.S.I.G. MIN. TO 200 P.S.I.G. MAX.

5'-0" STRAIGHT LINK CHAIN
CAN BE ADJUSTED TO DESIRED
HEIGHT.

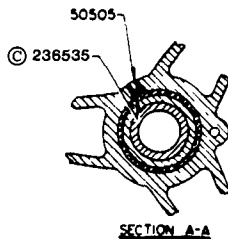
SAFETY HOOK

NOTE: WHEN HOIST IS USED
WITH A CONTRACTORS RIG
THE CHAIN SHOULD BE
ATTACHED TO A PUMP AT ALL
TIMES AS A SAFETY MEASURE.



REPAIR PARTS LIST

| Part | Description | Part | Description |
|-------|-----------------------------|--------|------------------------|
| 11832 | Elbow | 51403 | #6-32 Hex. Machine Nut |
| 12511 | Plug | 61439 | Support Tube |
| 33050 | Tube Gasket | 61453 | Support Tube |
| 34327 | Packing | 65204 | Name Plate |
| 40444 | Tee Casting | 67275 | Airline Pipe |
| 40445 | Base Casting | 68543 | Anchor Shackle |
| 40446 | Tube Cap | 68544 | Hoist Hook |
| 40447 | Tube Cap | 68545 | Chain |
| 48083 | Washer | 91632 | Support Tube Assembly |
| 50033 | 1/4"-20 Hex. Hd. Screw | 236535 | Viton Packing |
| 50044 | 3/8"-16 Hex. Hd. Cap Screw | 360226 | Clamp |
| 50505 | Set Screw | 650106 | Plug |
| 50618 | #6-32 Rd. Hd. Machine Screw | | |
| 51010 | 1/4"-20 Hex. Nut | | |



© INDICATES CHANGE

INSTALLATION

Base casting can be used as a template for location of anchor bolts.

Position of pump hoist in respect to drum location for contractor's rigs.

Arm must be adjusted for side opening drums.

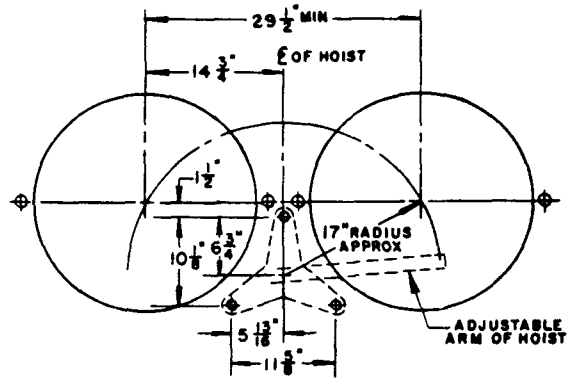
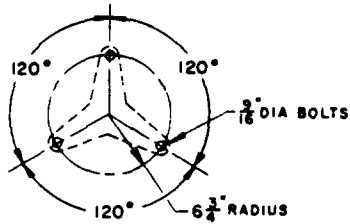


FIG. A
TWO DRUM GROUP

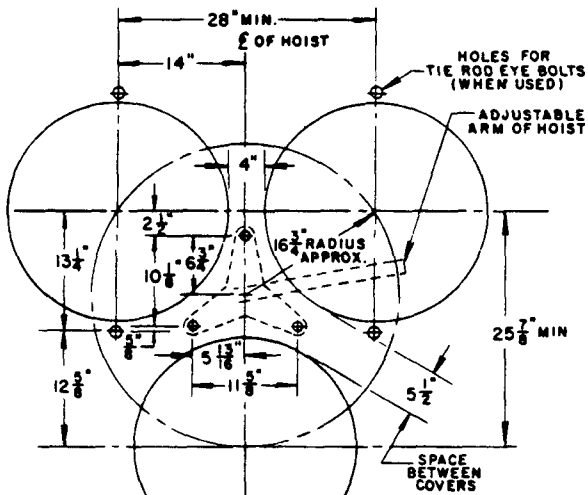


FIG. B
THREE DRUM GROUP

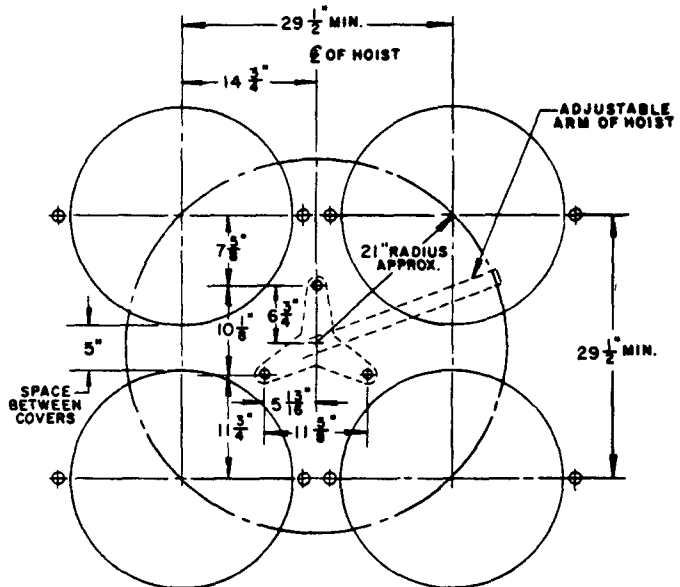


FIG. C
FOUR DRUM GROUP

OPERATION

Attach socket of air supply to plug.

(Operating air pressure 50 P.S.I.G. min. to 200 P.S.I.G. Max.) Restrictor in base of air inlet prevents pump hoist from lifting too rapidly.

IMPORTANT: Socket must remain connected to hold hoist in the raised position.

Remove socket to lower hoist. Restrictor in the base of air inlet permits the hoist to lower slowly. The plug located in the base casting can be removed for cleaning the air restrictor.

RETAIN THIS INFORMATION FOR FUTURE REFERENCE

When ordering replacement parts, list: Part Number, Description, Model Number, and Series Letter.

LINCOLN provides a Distributor Network that stocks equipment and replacement parts.