

(400 LB. DRUM SIZE)

### SPECIFICATIONS

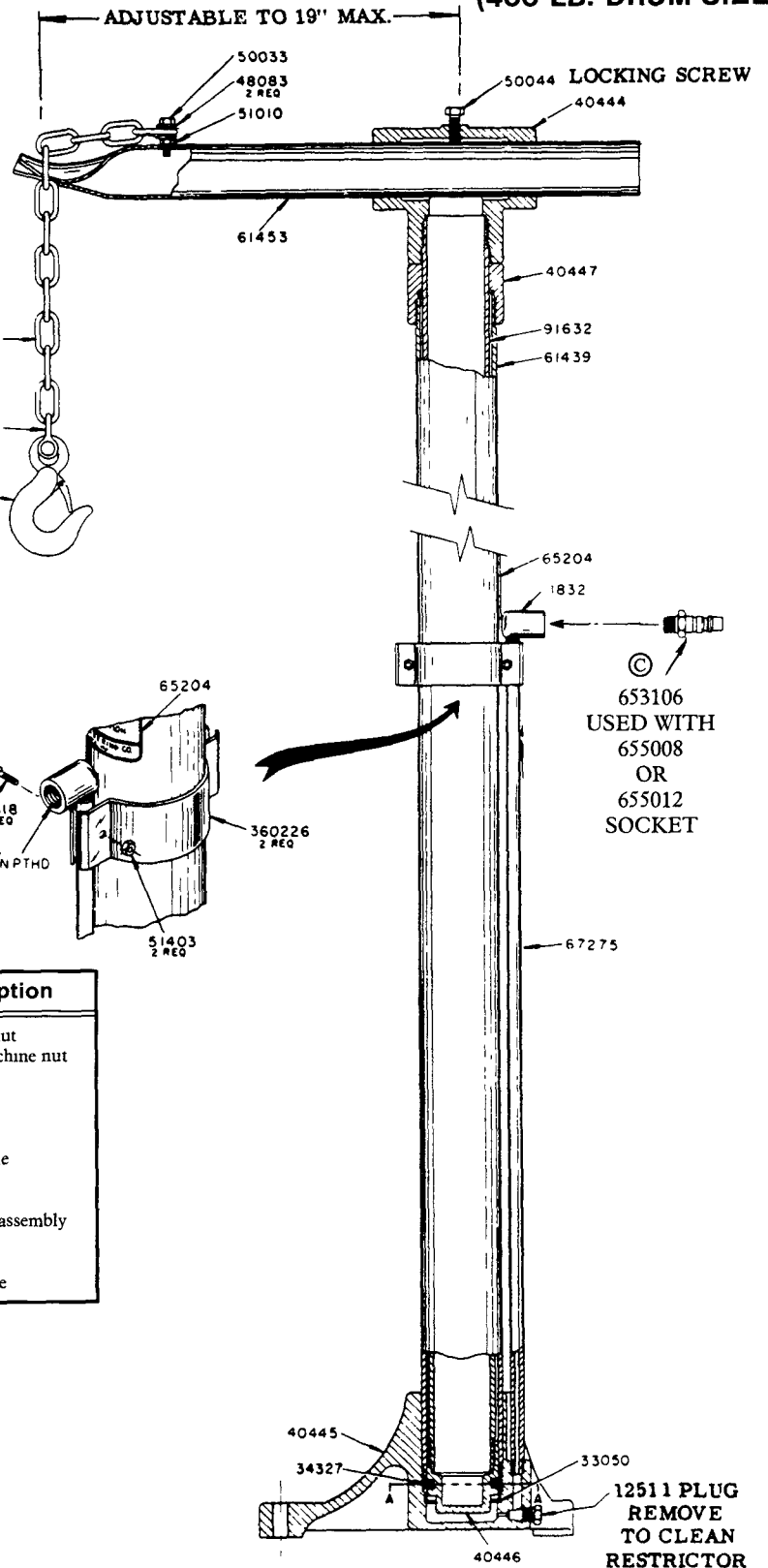
HEIGHT LOWERED - 70½"  
HEIGHT RAISED - 108½"  
LIFT CAPACITY - 400 LBS. MAX.  
ROTATION - 360°

OPERATING AIR PRESSURE  
50 P.S.I.G. MIN. TO 200 P.S.I.G. MAX.

5'-0" STRAIGHT LINK CHAIN  
CAN BE ADJUSTED TO DESIRED  
HEIGHT.

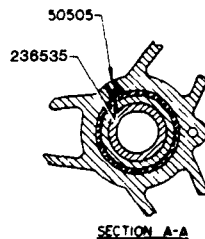
### SAFETY HOOK

NOTE: WHEN HOIST IS USED  
WITH A CONTRACTORS RIG  
THE CHAIN SHOULD BE  
ATTACHED TO A PUMP AT ALL  
TIMES AS A SAFETY MEASURE.



### REPAIR PARTS LIST

Part	Description	Part	Description
11832	Elbow	51010	1/4"-20 hex. nut
12511	Plug	51403	#6-32 hex machine nut
33050	Tube gasket	61439	Support tube
34327	Packing (Buna-N)	61453	Support tube
40444	Tee casting	65204	Name plate
40445	Base casting	67275	Airline pipe
40446	Tube cap	68543	Anchor shackle
40447	Tube cap	68544	Hoist hook
48083	Washer	68545	Chain
50033	1/4"-20 hex. hd. screw	91632	Support tube assembly
50044	3/8"-16 hex. hd. cap screw	236535	Viton packing
50505	Set screw	360226	Clamp
50618	#6-32 rd. hd. machine screw	653106	Coupler nipple



© Indicates Change

## INSTALLATION

Base casting can be used as a template for location of anchor bolts.

Position of pump hoist in respect to drum location for contractor's rigs.

Arm must be adjusted for side opening drums.

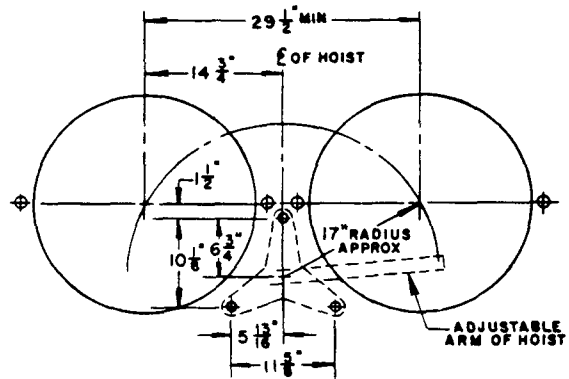
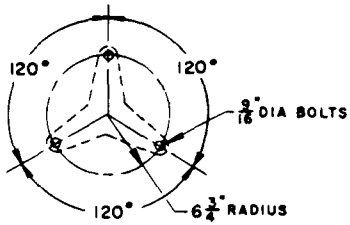


FIG. A  
TWO DRUM GROUP

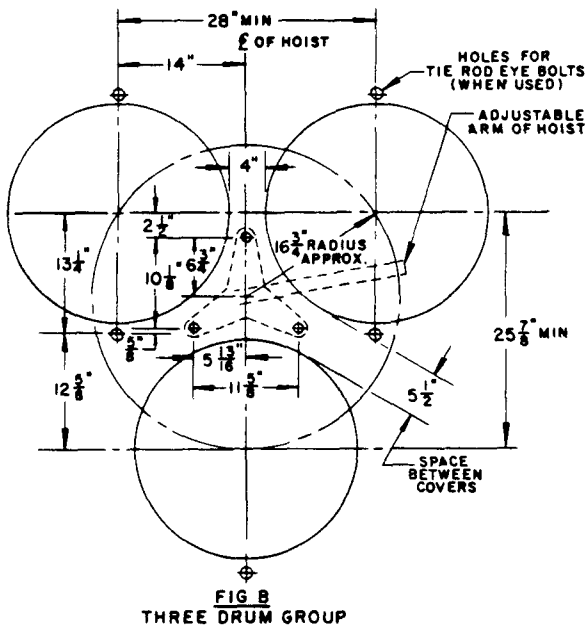


FIG. B  
THREE DRUM GROUP

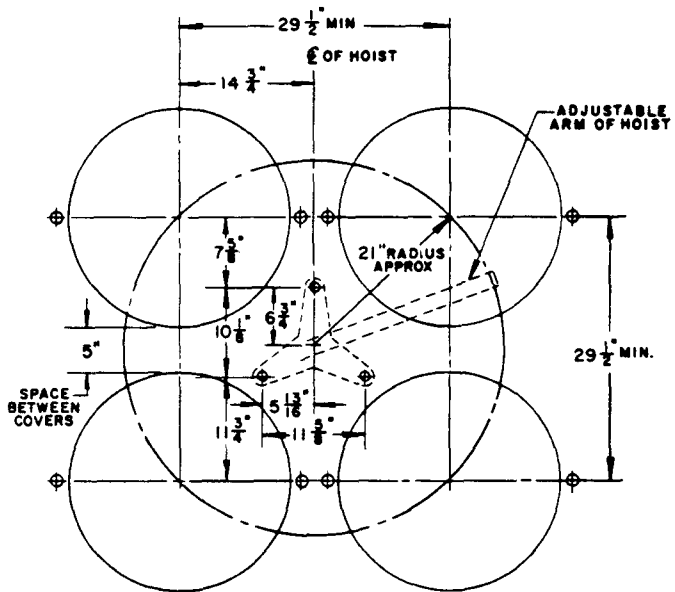


FIG. C  
FOUR DRUM GROUP

## OPERATION

Attach socket of air supply to plug.

(Operating air pressure 50 P.S.I.G. min. to 200 P.S.I.G. Max.) Restrictor in base of air inlet prevents pump hoist from lifting too rapidly.

**IMPORTANT:** Socket must remain connected to hold hoist in the raised position.

Remove socket to lower hoist. Restrictor in the base of air inlet permits the hoist to lower slowly. The plug located in the base casting can be removed for cleaning the air restrictor.

**RETAIN THIS INFORMATION FOR FUTURE REFERENCE**

When ordering replacement parts, list: Part Number, Description, Model Number, and Series Letter.

LINCOLN provides a Distributor Network that stocks equipment and replacement parts.