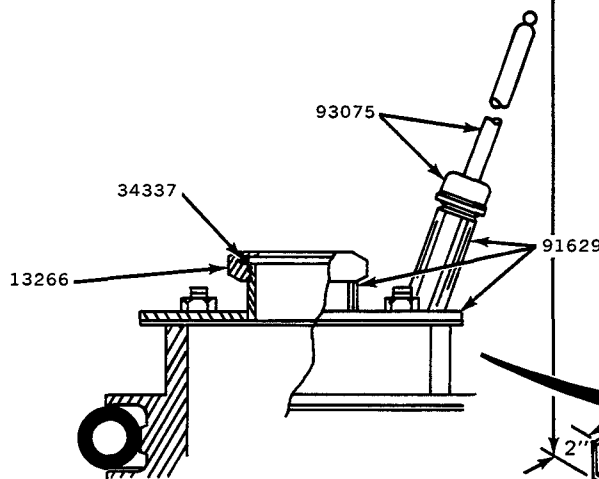
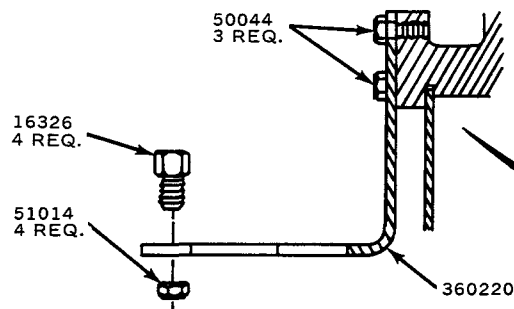
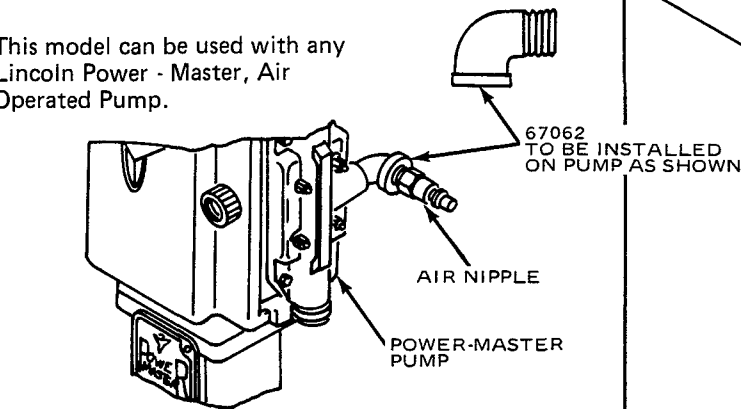


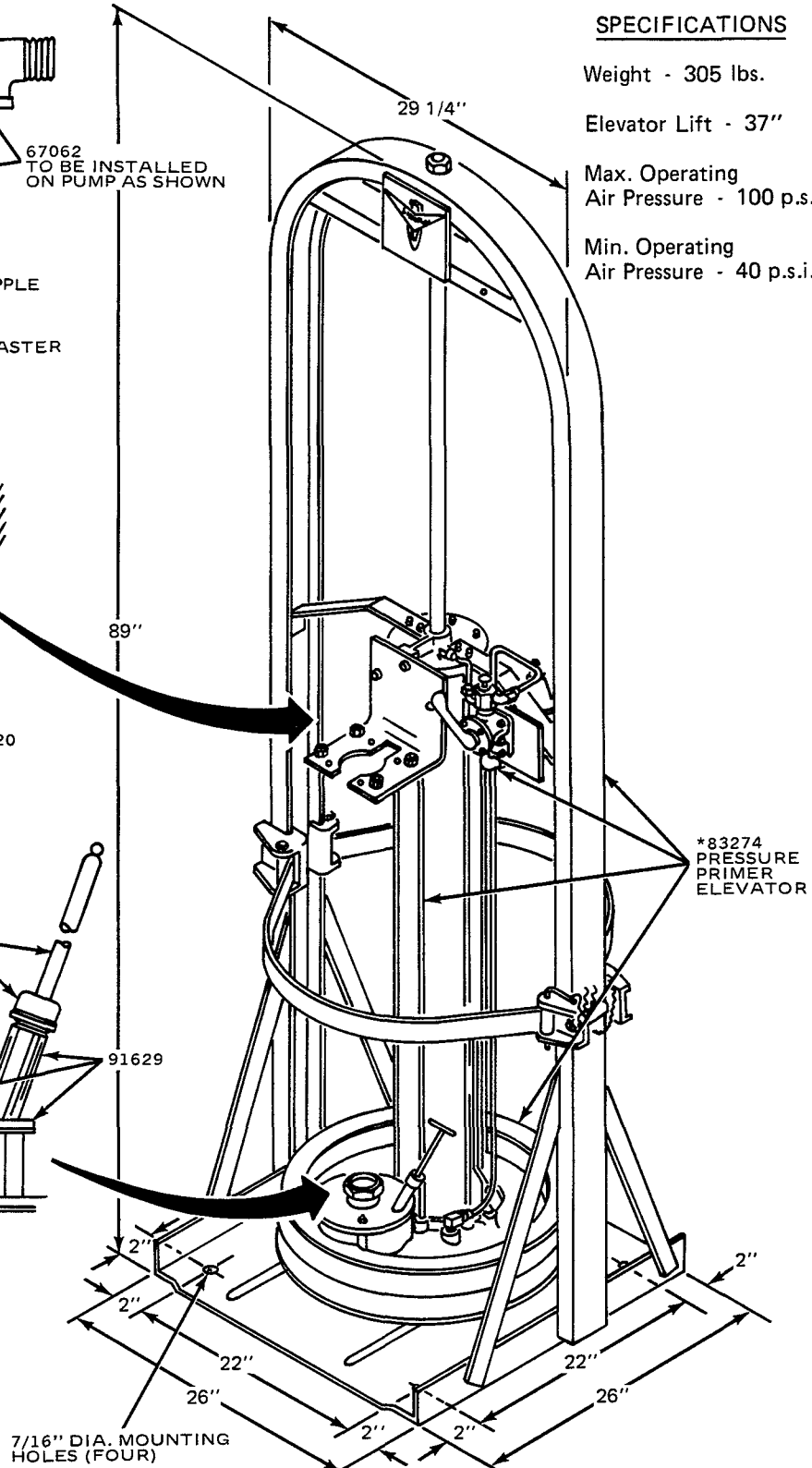
400 LB. DRUM SIZE

This model can be used with any Lincoln Power - Master, Air Operated Pump.



REPAIR PARTS LIST

PART NO.	DESCRIPTION
13266	Gland Nut
16326	Extension Adapter Nipple
38089	Packing
50044	3/8"-16 Hex. Hd. Cap Screw
51014	1/2"-13 Hex. Nut
67062	Street Elbow
83274	Pressure Primer Elevator
91629	Adapter Plate Assembly
93075	Priming Plug Assembly
360220	Support Bracket

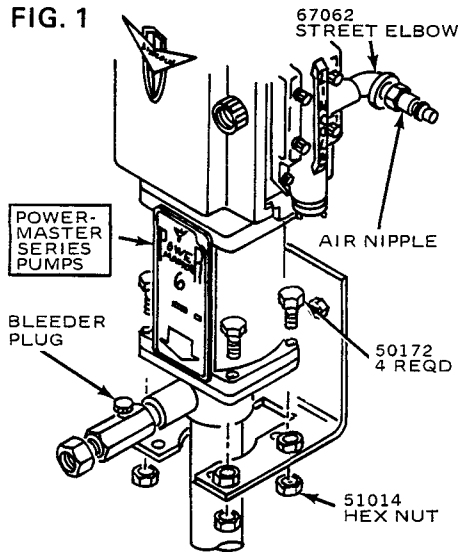


SPECIFICATIONS

- Weight - 305 lbs.
- Elevator Lift - 37"
- Max. Operating Air Pressure - 100 p.s.i.
- Min. Operating Air Pressure - 40 p.s.i.

* For 83274 Pressure Primer Elevator Assembly refer to Service Manual Sheet - Section A32 Page 2 Series.

FIG. 1



1. BEFORE INSTALLING PUMP TO PRESSURE PRIMER

Remove & discard 51087 NUTS furnished with Pump.
 Remove the Air Nipple from the Pump.
 Assemble Air Nipple and 67062 Street Elbow to Pump as shown in Fig. 1.

2. INSTALL PUMP TO PRESSURE PRIMER

Insert Pump Tube through Support Bracket and into Follower through the 13266 Gland Nut. (Gland Nut should be loosened first.)

Position Pump on Support Bracket & attach using the 50172 Bolts furnished with Pump.

Tighten 13266 Gland Nut to secure lower end of Pump Tube into Follower.

3. CONNECT AIR LINES TO PRESSURE PRIMER

Fig. 2 illustrates a suggested Airline installation to Pressure Primer.
 Main Air Supply Line to be 1/2" pipe or larger. An Air Regulator and Gauge is recommended between main Air Supply Line and Pump.

TO OPERATE PRESSURE PRIMER

Raising and lowering of Pressure Primer is controlled by the four-way Air Valve. To raise the Pressure Primer, move the Air Valve Handle to the "Left" (Raise Position). To lower the Pressure Primer, move the Handle to the "Right" (Lower Position). Pressure Primer can be stopped in any position by moving the Handle to the "Neutral" position. If the Handle is moved to "Neutral" when the Pressure Primer is in the "Raised" position, the air line can be disconnected and the Follower will remain up.

NOTE: When the Pressure Primer is not in use, the Air Valve Handle should be moved to the "Neutral" position. The Air Regulator on the Pressure Primer has a tamper proof cap and is factory set at 40 P.S.I.G. To change setting, remove cap and adjust the slotted stem. Do not exceed 100 P.S.I.G. Air Pressure.

TO INSTALL DRUM

Raise Pressure Primer to permit placing of drum on the platform directly beneath the Follower. The drum hold down straps can be adjusted to accommodate the variations in height of the drum upper rolling hoop. Remove Pin from bracket on support channel and swing one of the Hold Down Straps outwards. Place drum on platform against strap that is still in position. This strap will act as a guide, allowing drum to be positioned directly under the Follower. When drum is in position, clamp free end of strap back in place.

Remove the Priming Plug from the Follower and lower Pressure Primer slowly until Follower enters the Drum and rests on the face of the material. The weight of the Follower will force material through the Priming Tube. Replace Priming Plug and tighten securely.

TO PRIME PUMP

Open Bleeder Plug in pump outlet (fig. 1). Connect air supply line to Air Motor to start pump operating. With pump operating, slowly increase air pressure to Pressure Primer until material flows from Bleeder Plug opening. Shut off air to Air Motor and tighten Bleeder Plug. Start pump again and open Control Valve at end of delivery hose. Continue to operate pump until material flows freely from Control Valve. Pump is now fully primed. If material does not flow freely, it is an indication that air may be trapped in the Follower dome. Remove the Priming Plug and use as a probe to dislodge the air pocket.

IMPORTANT: If material is forced out around follower wiper, decrease air pressure to Pressure Primer, if Pump loses its prime, increase air pressure to Pressure Primer.

TO REMOVE EMPTY DRUM

When drum is empty, turn Handle of the four-way valve to the "Left" (Raise Position) and manually depress Air Assist Valve to direct air pressure to break seal between Follower and Drum. As the Follower starts to rise, the upward motion pulls the Air Assist Valve away from the operators hand, closing the valve and the air cylinder completes the Follower extraction. Priming Plug should be removed during follower extraction.

NOTE: As the pump and follower are raised, the Hold Down Straps will keep the drum from lifting off the platform. When Pressure Primer is not in use turn Air Valve Handle to the "Neutral" position.

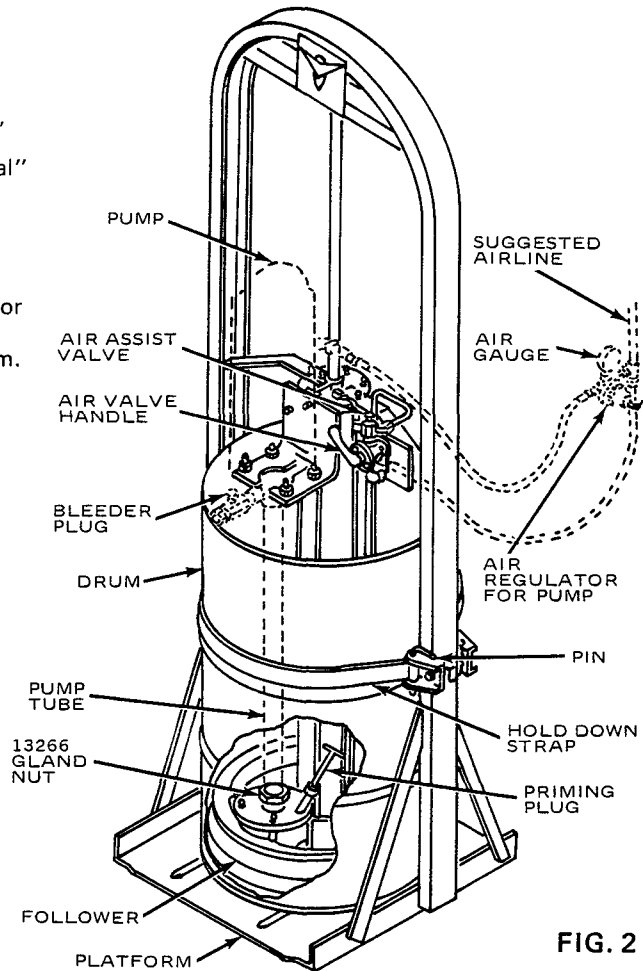


FIG. 2