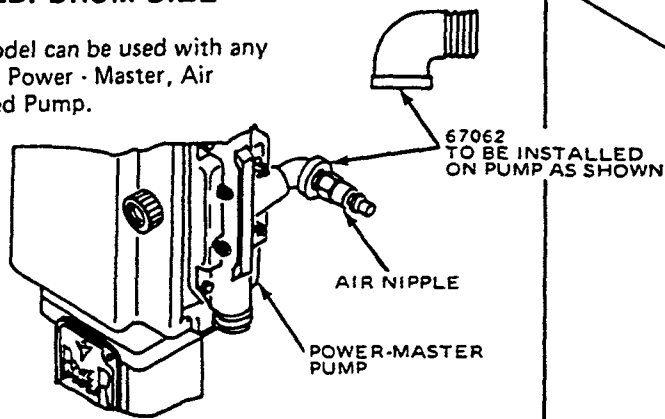


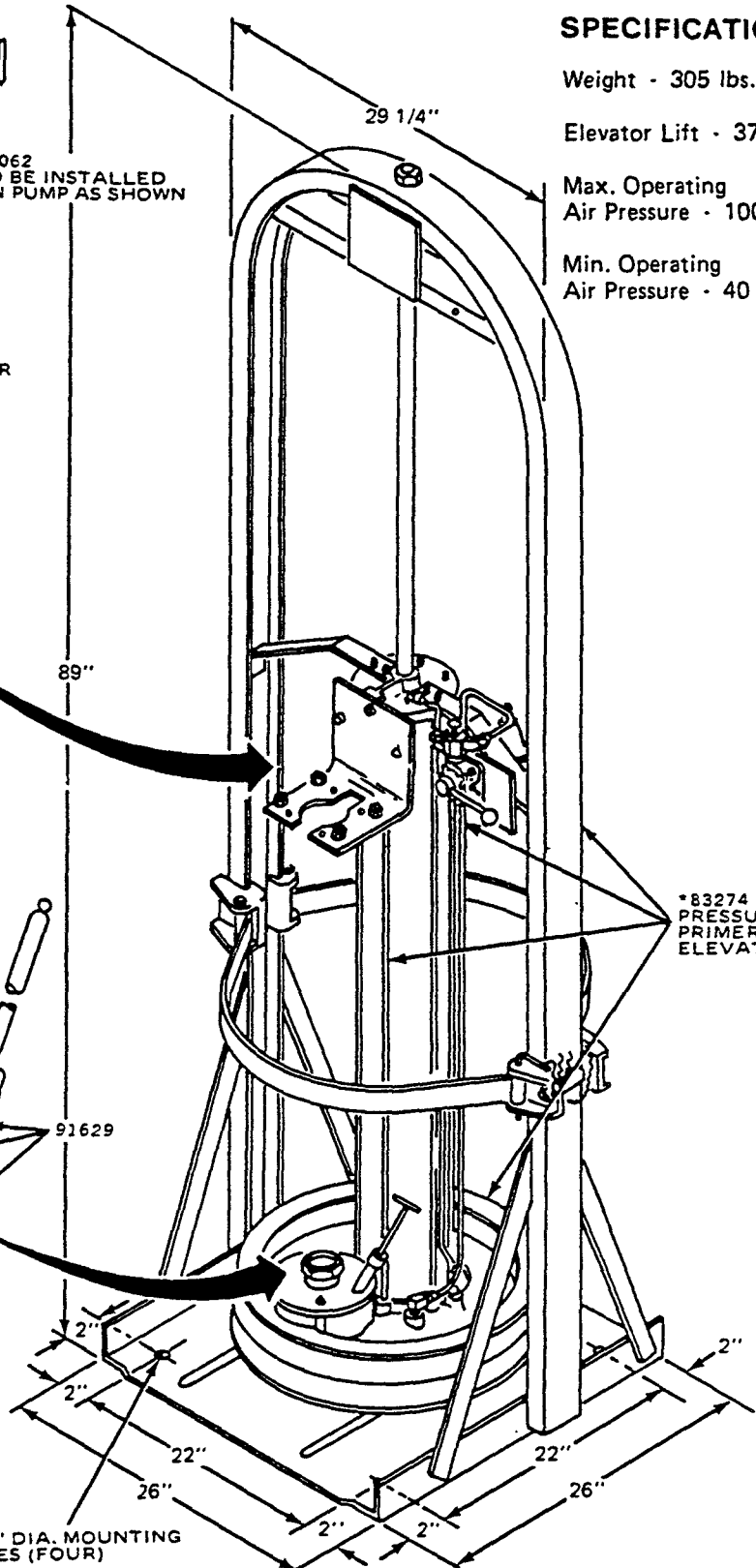
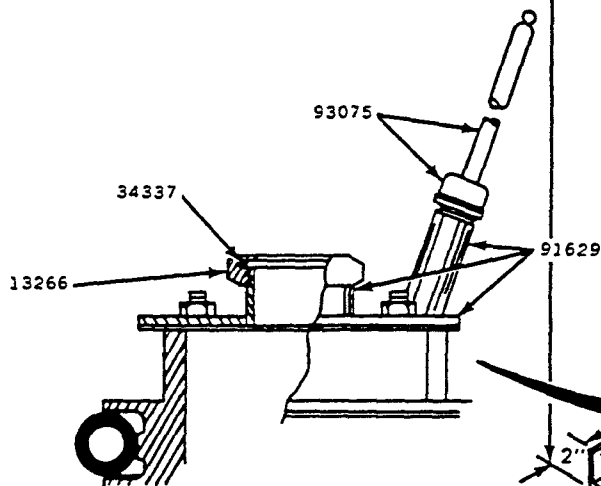
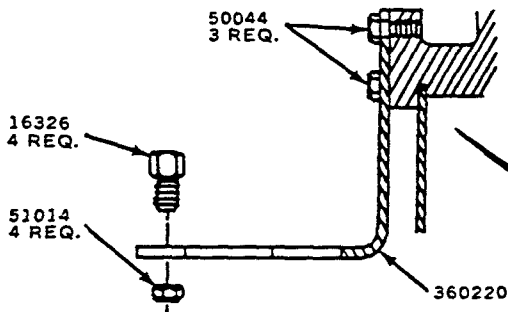
### 400 LB. DRUM SIZE

This model can be used with any Lincoln Power-Master, Air Operated Pump.



### SPECIFICATIONS

- Weight - 305 lbs.
- Elevator Lift - 37"
- Max. Operating Air Pressure - 100 p.s.i.
- Min. Operating Air Pressure - 40 p.s.i.



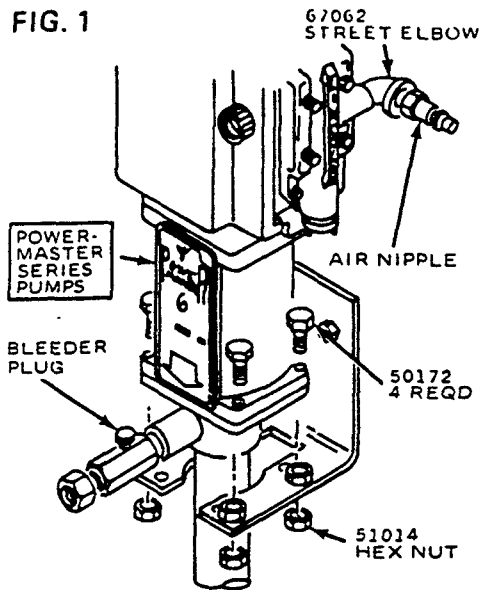
### REPAIR PARTS LIST

Part	Description
13266	Gland Nut
16326	Extension Adapter Nipple
38089	Packing
50044	3/8"-.16 Hex. Hd. Cap Screw
51014	1/2"-.13 Hex. Nut
67062	Street Elbow
83274	Pressure Primer Elevator
91629	Adapter Plate Assembly
93075	Priming Plug Assembly
360220	Support Bracket

7/16" DIA. MOUNTING HOLES (FOUR)

\* For 83274 Pressure Primer Elevator Assembly refer to Service Manual Sheet - Section A32 Page 2 Series.

FIG. 1



**1. BEFORE INSTALLING PUMP TO PRESSURE PRIMER**

Remove & discard 51087 NUTS furnished with Pump.  
 Remove the Air Nipple from the Pump.  
 Assemble Air Nipple and 67062 Street Elbow to Pump as shown in Fig. 1.

**2. INSTALL PUMP TO PRESSURE PRIMER**

Insert Pump Tube through Support Bracket and into Follower through the 13266 Gland Nut. (Gland Nut should be loosened first.)

Position Pump on Support Bracket & attach using the 50172 Bolts furnished with Pump.

Tighten 13266 Gland Nut to secure lower end of Pump Tube into Follower.

**3. CONNECT AIR LINES TO PRESSURE PRIMER**

Fig. 2 illustrates a suggested Airline installation to Pressure Primer. Main Air Supply Line to be 1/2" pipe or larger. An Air Regulator and Gauge is recommended between main Air Supply Line and Pump.

**TO OPERATE PRESSURE PRIMER**

Raising and lowering of Pressure Primer is controlled by the four-way Air Valve. To raise the Pressure Primer, move the Air Valve Handle "Counter-Clockwise" (Raise Position). To lower the Pressure Primer, move the Handle "Clockwise" (Lower Position). Pressure Primer can be stopped in any position by moving the Handle to the "Neutral" position. If the Handle is moved to "Neutral" when the Pressure Primer is in the "Raised" position, the air line can be disconnected and the Follower will remain up.

NOTE: When the Pressure Primer is not in use, the Air Valve Handle should be moved to the "Neutral" position. The Air Regulator on the Pressure Primer has a tamper proof cap and is factory set at 40 P.S.I.G. To change setting, remove cap and adjust the slotted stem. Do not exceed 100 P.S.I.G. Air Pressure.

**TO INSTALL DRUM**

Raise Pressure Primer to permit placing of drum on the platform directly beneath the Follower. The drum hold down straps can be adjusted to accommodate the variations in height of the drum upper rolling hoop. Remove Pin from bracket on support channel and swing one of the Hold Down Straps outwards. Place drum on platform against strap that is still in position. This strap will act as a guide, allowing drum to be positioned directly under the Follower. When drum is in position, clamp free end of strap back in place.

Remove the Priming Plug from the Follower and lower Pressure Primer slowly until Follower enters the Drum and rests on the face of the material. The weight of the Follower will force material through the Priming Tube. Replace Priming Plug and tighten securely.

**TO PRIME PUMP**

Open Bleeder Plug in pump outlet (fig. 1). Connect air supply line to Air Motor to start pump operating. With pump operating, slowly increase air pressure to Pressure Primer until material flows from Bleeder Plug opening. Shut off air to Air Motor and tighten Bleeder Plug. Start pump again and open Control Valve at end of delivery hose. Continue to operate pump until material flows freely from Control Valve. Pump is now fully primed. If material does not flow freely, it is an indication that air may be trapped in the Follower dome. Remove the Priming Plug and use as a probe to dislodge the air pocket.

IMPORTANT: If material is forced out around follower wiper, decrease air pressure to Pressure Primer, if Pump loses its prime, increase air pressure to Pressure Primer.

**TO REMOVE EMPTY DRUM**

When drum is empty, turn Handle of the four-way valve "Clockwise" (Raise Position) and manually depress Air Assist Valve to direct air pressure to break seal between Follower and Drum. As the Follower starts to rise, the upward motion pulls the Air Assist Valve away from the operators hand, closing the valve and the air cylinder completes the Follower extraction. Priming Plug should be removed during follower extraction.

NOTE: As the pump and follower are raised, the Hold Down Straps will keep the drum from lifting off the platform. When Pressure Primer is not in use turn Air Valve Handle to the "Neutral" position.

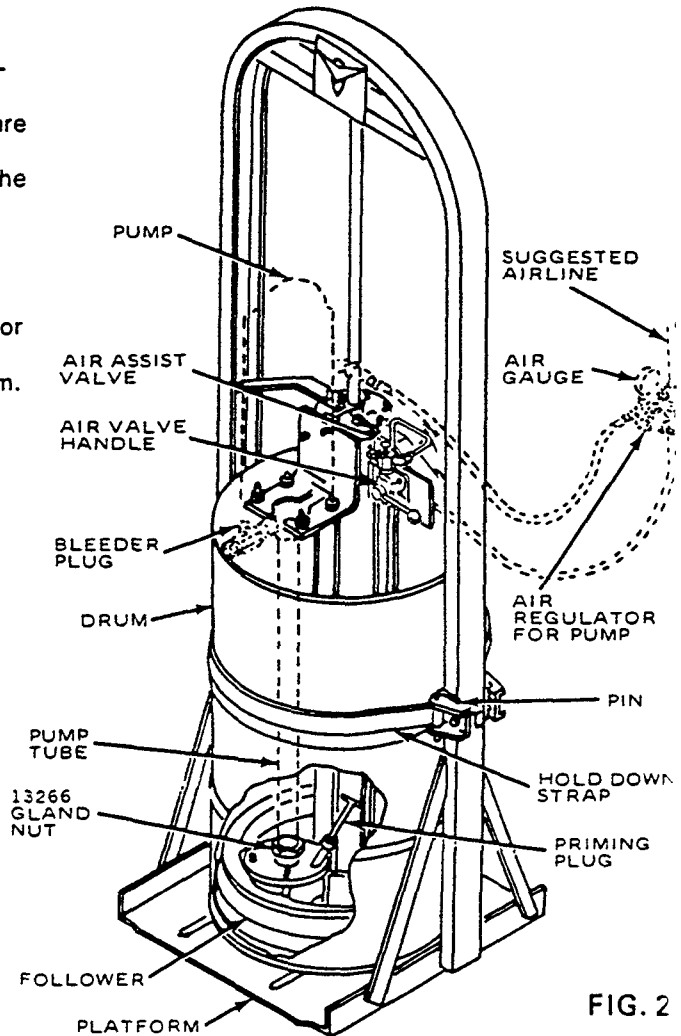


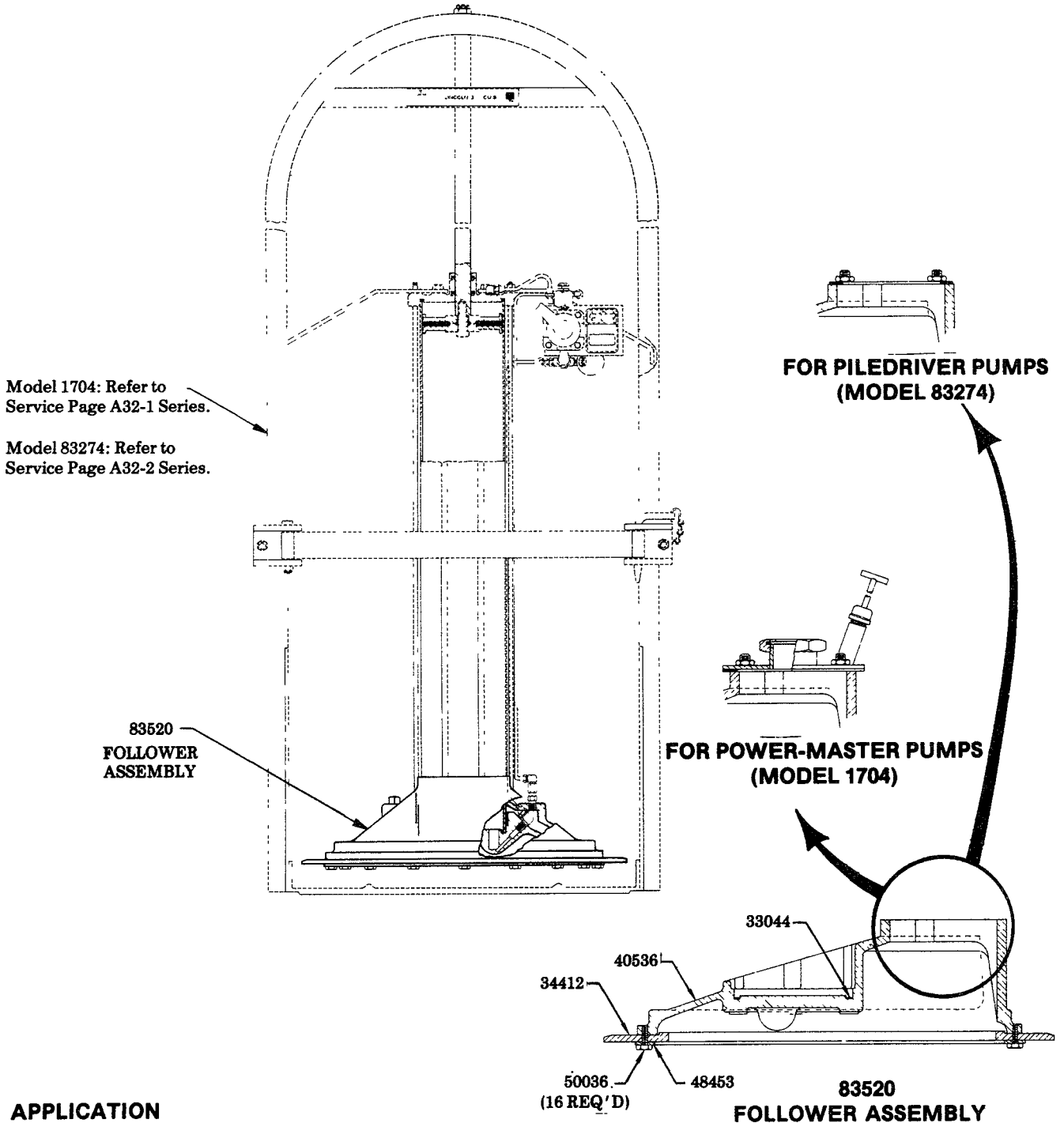
FIG. 2

# 1704

# FOLLOWER KITS

BLADE-TYPE

ACCESSORY FOR MODELS 1704 AND 83274



### APPLICATION

The 83520 Blade-Type Follower allows for a larger drum variation than the hose type Follower, and provides a better seal and wiping action with light materials.

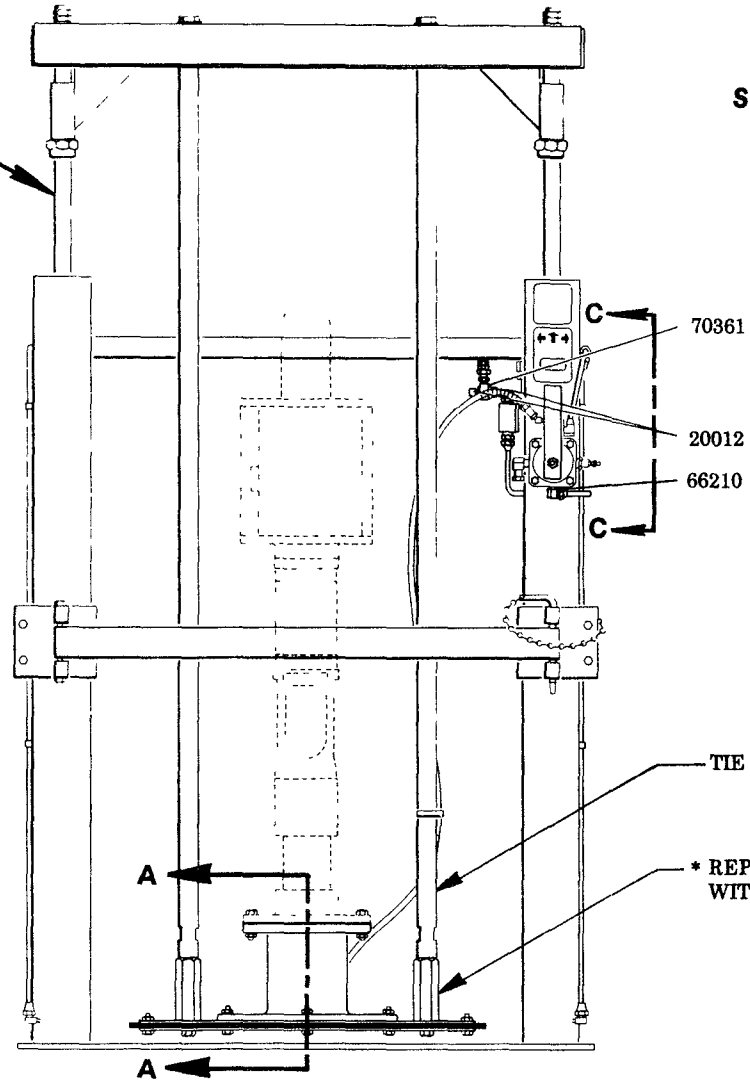
NOTE: When used with light materials, air pressure to primer air cylinder must be 10 P.S.I. or less.

**LINCOLN**  
A DIVISION OF  
McNEIL CORPORATION

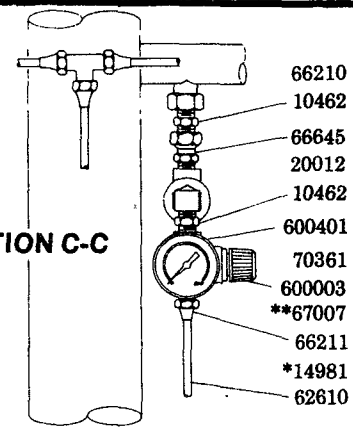
One Lincoln Way  
St. Louis, MO 63120-1578  
(314) 679-4200

SECTION - **K4**  
PAGE - **27B**

MODEL 1735



SECTION C-C

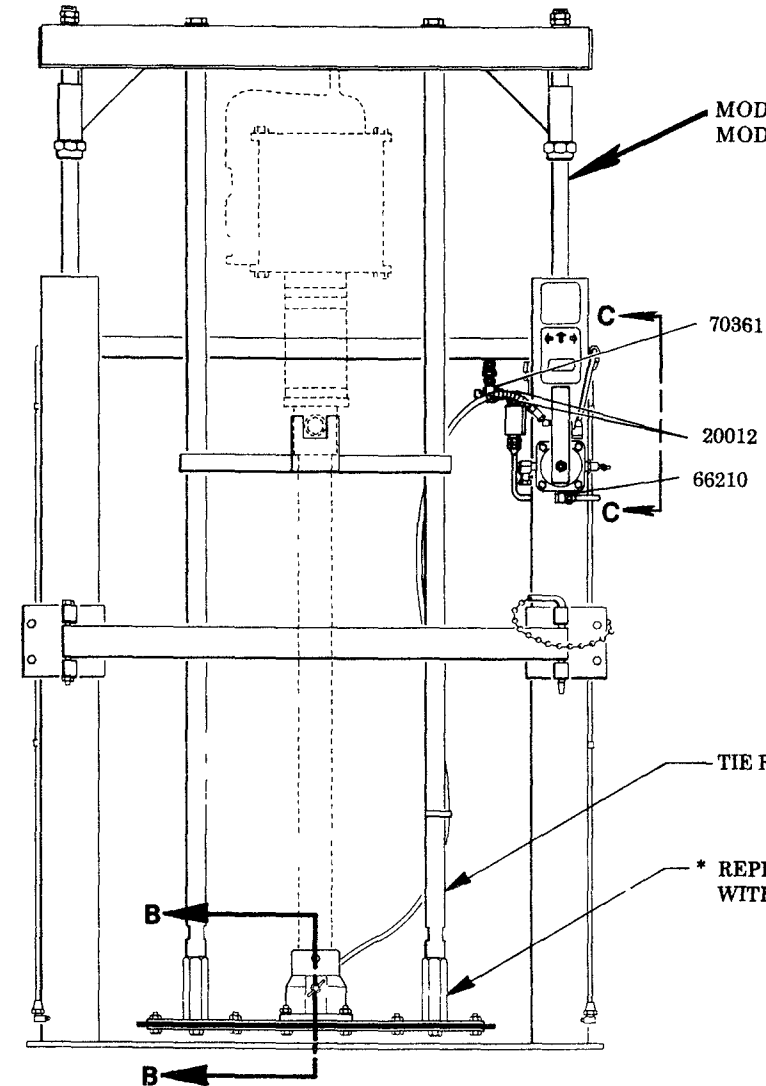


\*\* 67007 PLUG LOCATED IN PORT ON BACKSIDE OF 600003 REGULATOR

TIE ROD

\* REPLACE 51014 NUT WITH 14981 ADAPTER (2 REQ'D)

MODEL 1736  
MODEL 1736K



70361

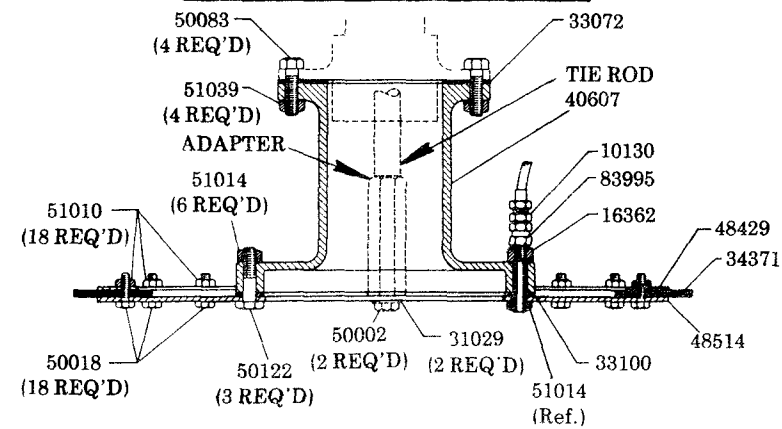
20012

66210

TIE ROD

\* REPLACE 51014 NUT WITH 14981 ADAPTER (2 REQ'D)

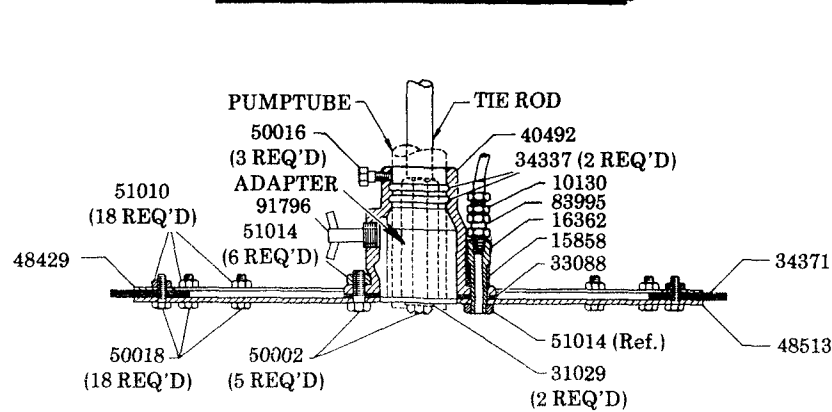
SEC. A-A  
MODEL 83793 FOLLOWER ASSEMBLY



KIT MODEL 84172  
FOR MODEL 1735 PILEDRIVER PUMP

Includes 83793 Follower Assembly and 84185 Air Control Assembly

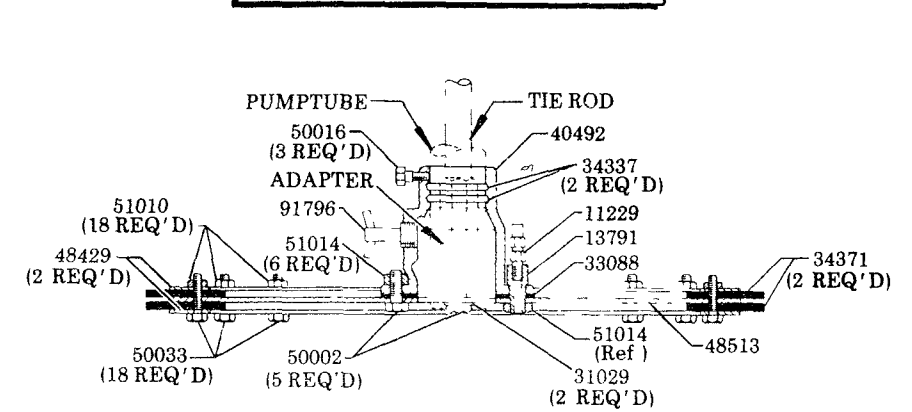
SEC. B-B  
MODEL 83286 FOLLOWER ASSEMBLY



KIT MODEL 84173  
FOR MODEL 1736

Includes 83286 Follower Assembly and 84185 Air Control Assembly.

SEC. B-B  
MODEL 83286K FOLLOWER ASSEMBLY



FOR MODEL 1736K  
(DUAL-BLADE)

### SERVICE PARTS

PART	DESCRIPTION	PART	DESCRIPTION
10130	Nipple	50018	Screw
10462	Nipple	50033	Screw
11229	Adapter	50036	Screw
13791	Adapter	50083	Screw
14981	Adapter	50122	Screw
15858	Spacer	51010	Nut
16362	Adapter	51014	Nut
20012	Elbow	51039	Nut
31029	Gasket	62610	Tube
33044	Air cylinder gasket	66210	90° Tube connector
33072	Gasket	66211	Tube connector
33088	Gasket	66645	Adapter union
33100	Gasket	67007	Plug
34337	O-ring	70361	Quick exhaust air valve
34371	Wiper	83286	Follower assembly
34412	Wiper	82286K	Follower assembly (Dual-blade)
40536	Follower	83520	Follower assembly
40607	Follower	83793	Follower assembly
40492	Follower	83995	Line check
48429	Wiper ring	84172	Wiper kit (Model 1735)
48453	Follower ring	84173	Wiper kit (Model 1736)
48513	Wiper ring	84185	Air control assembly
48514	Wiper ring	91796	Tee handle plug
50002	Screw	600003	Miniature air regulator
50016	Screw	600401	Pressure gauge

**RETAIN THIS INFORMATION FOR FUTURE REFERENCE**

When ordering replacement parts, list: Part Number, Description, Model Number, and Series Letter.  
**LINCOLN ST. LOUIS** provides a Distributor Network that stocks equipment and replacement parts.  
 A list of Authorized Service Departments will be furnished upon request.