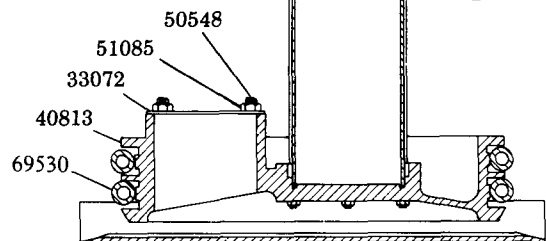
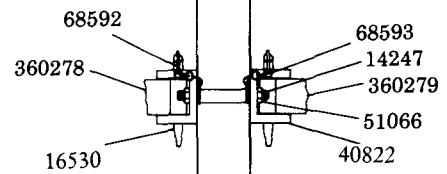
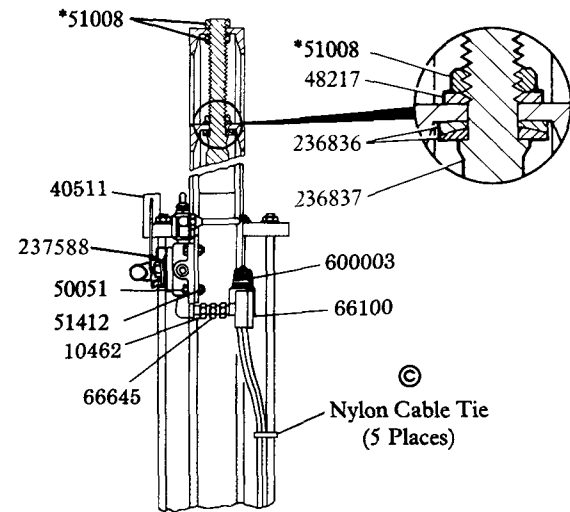
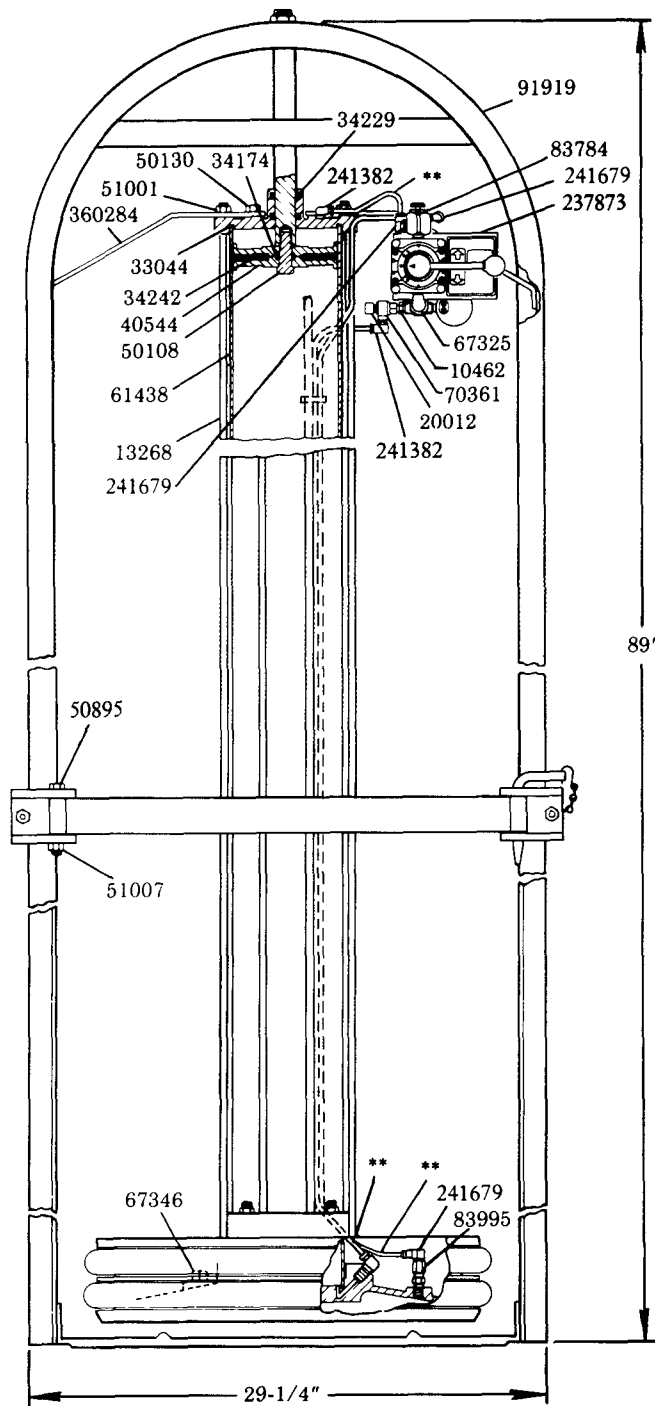


400 LB. DRUM SIZE

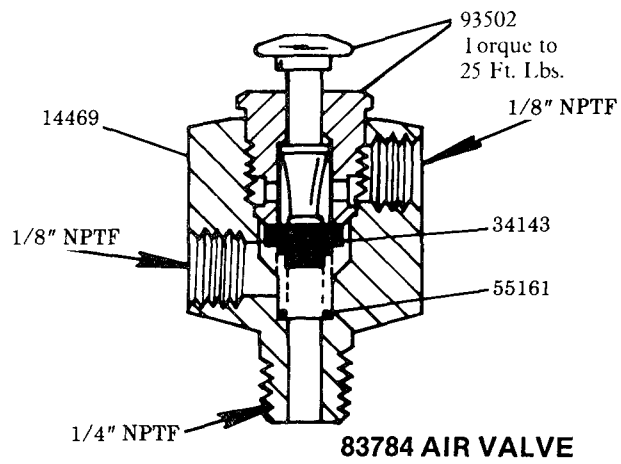
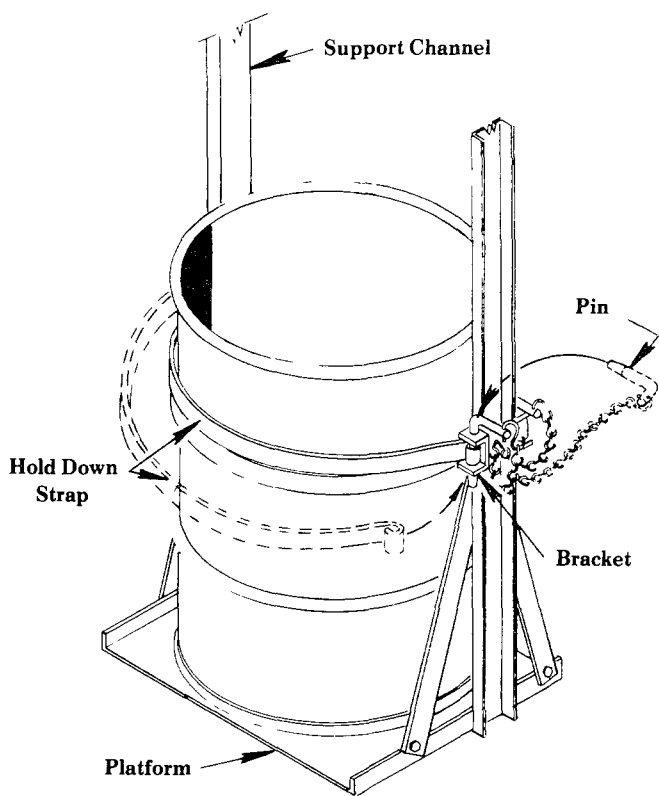


© Indicates Change  
Nylon Cable Tie  
(5 Places)

© Indicates Change

**\*NOTE:** Before tightening the 51008 Nuts make certain that the follower is centered between the legs of the frame. Tighten the lower nut first and then simultaneously tighten the upper two nuts.

**\*\*NOTE:** 1/4" O.D. x .062" wall, polyethylene tubing.  
Min. burst pressure - 400 psi.  
Min. working pressure - 150 psi.  
Cut to required length.



**83784 AIR VALVE**

**TO INSTALL DRUM**

Remove pin from bracket on support channel and swing hold down strap out.

Place drum on platform against the hold down strap that is still in position. Strap acts as a guide allowing drum to be positioned directly under the wiper. When drum is in place, clamp free end of strap.

As the pump and wiper are raised, the hold down strap will keep drum from lifting off the platform.

**SERVICE PARTS**

Part	Qty.	Description	Part	Qty.	Description
10462	2	Nipple	51412	4	Nut
13268	6	Tie rod	55161	1	Spring
14247	2	Stud	61438	1	Air cylinder
14469	1	Valve body	66100	1	Air gauge
16530	2	Pin	66645	1	Adapter union
20012	1	Elbow	67325	1	Elbow
33044	2	Gasket	67346	1	Plug
33072	1	Gasket	68592	4	S-hook
34143	1	Packing (Buna-N)	68593	2	Jack chain
34174	1	O-ring (Buna-N)	69530	2	Follower ring
34229	2	V-packing (Buna-N)	70361	1	Exhaust air valve
34242	1	Packing (Buna-N)	83784	1	Air valve
40511	1	Cylinder head	83995	1	Line check
40544	2	Piston washer	91919	1	Elevator frame
40813	1	Follower	93502	1	Valve assembly
40822	4	Bracket casting	236836	1	Spherical washer (2 pieces)
48217	1	Washer	236837	1	Piston rod
50051	4	Screw	237588	1	Hand valve
50108	1	Bolt	237873	1	Guide assembly
50130	2	Screw	241382	3	90° tube connector
50548	4	Set screw	241679	3	90° tube connector
50895	2	Screw	360278	1	Front strap
51001	12	Nut	360279	1	Rear strap
51007	2	Nut	360284	1	Guide angle
51008	3	Nut	600003	1	Air regulator
51066	4	Nut			
51085	4	Nut			

**RETAIN THIS INFORMATION FOR FUTURE REFERENCE**

When ordering replacement parts, list: Part Number, Description, Model Number, and Series Letter.

LINCOLN provides a Distributor Network that stocks equipment and replacement parts.