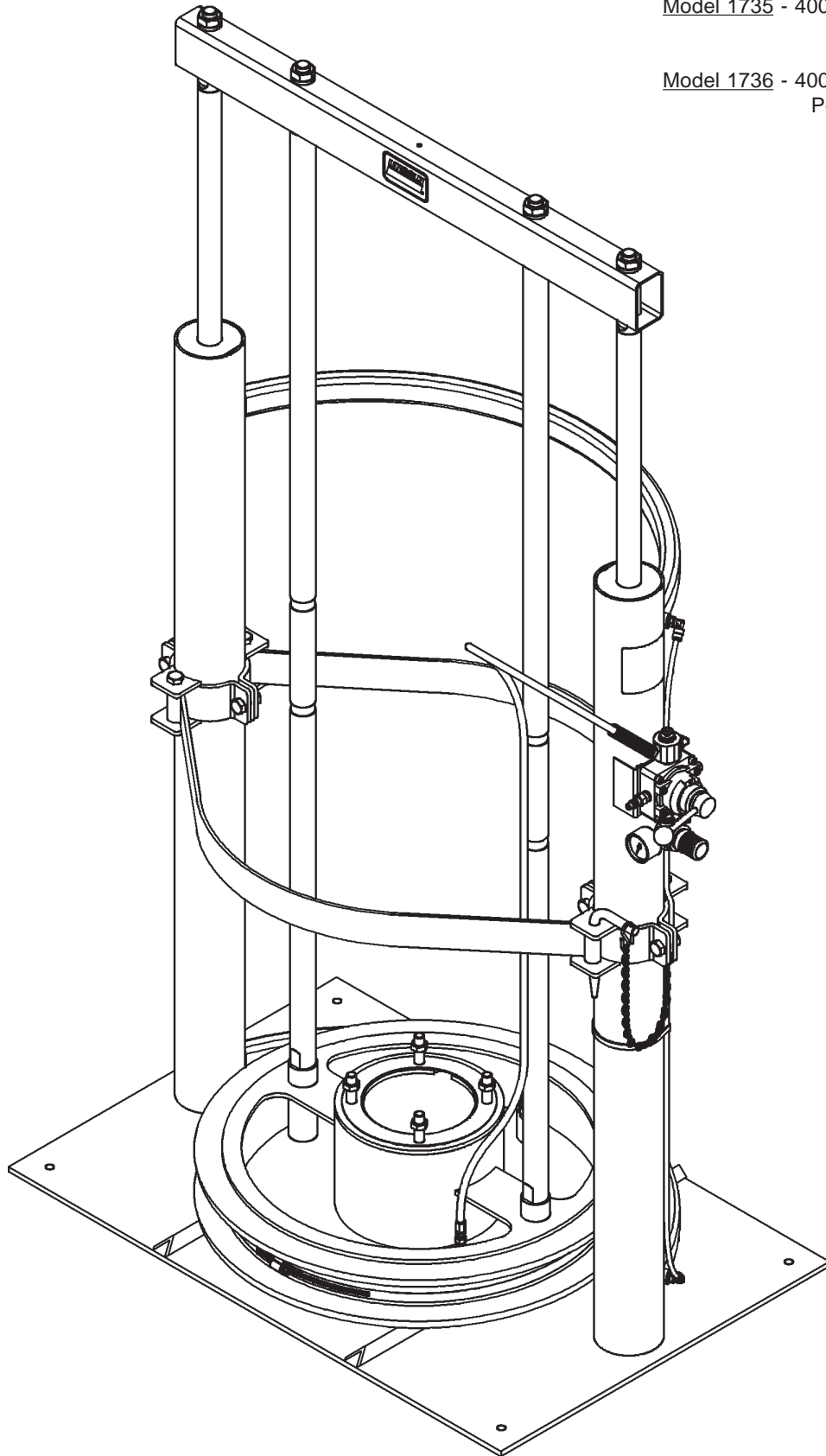




MODEL NO. 1735, 1736, 84114 PRESSURE PRIMER SERIES "H"

Model 1735 - 400 lb. drum primer for
PileDriver pumps

Model 1736 - 400 lb. drum primer for
PowerMaster pumps



MODEL NO. 1735, 1736, 84114 PRESSURE PRIMER



SPECIFICATIONS

Maximum Air Pressure: 150 psig
Priming Pressure @100 Psig: 3 psig
Raised Height: 103"
Lowered Height: 68-7/8"
Base Dimensions: 36" x 24"

DESCRIPTION

Model 1735 Twin Post Pressure Primer provides priming assistance when dispensing highly viscous materials.

The dual lip follower wipes the container wall clean and prevents material from extruding past the follower in the rolled chime areas and in areas with slightly dented surfaces.

Vertical movement is controlled by a manual four-way air valve. Directly above the four-way valve is a pushbutton valve which, when depressed, directs air to the underside of the follower to assist in its withdrawal from the drum. Below the four-way valve is an air regulator to regulate the priming pressure.

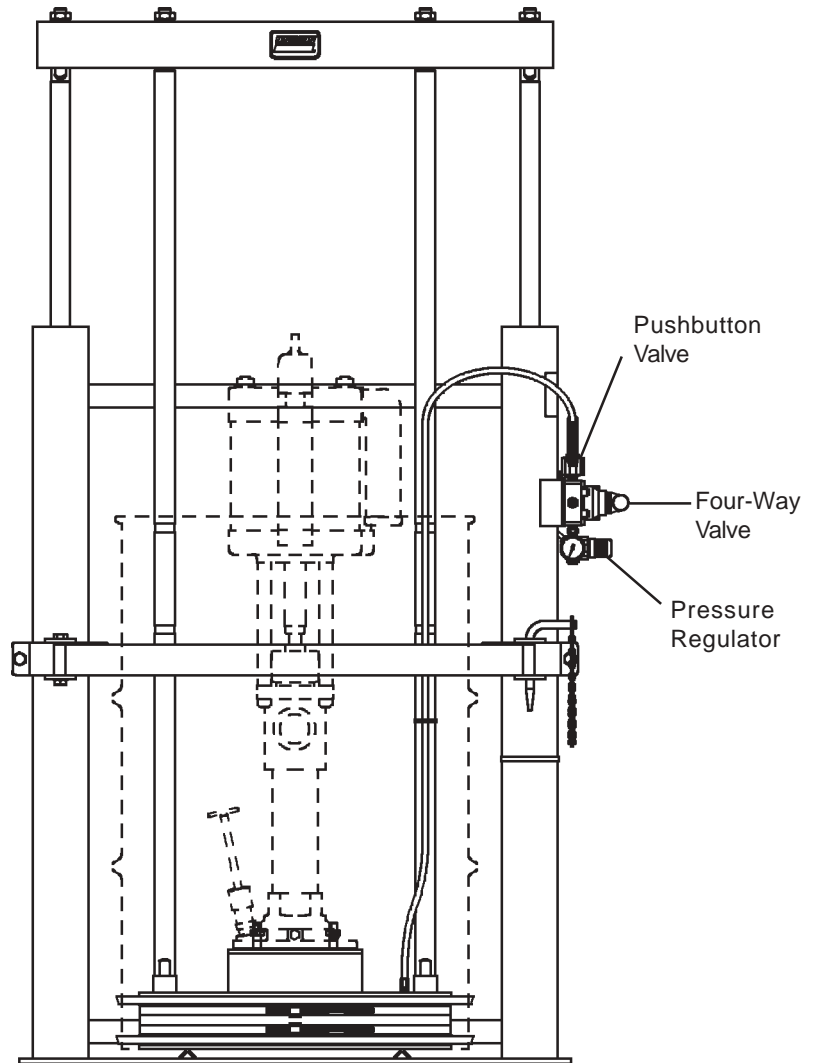
OPERATION

To lower the pressure primer into a drum, loosen the priming probe located in the pump flange. Then, rotate the four-way valve handle downward to direct compressed air above the twin air pistons, lowering the follower. After all air has escaped from beneath the follower, tighten the probe.

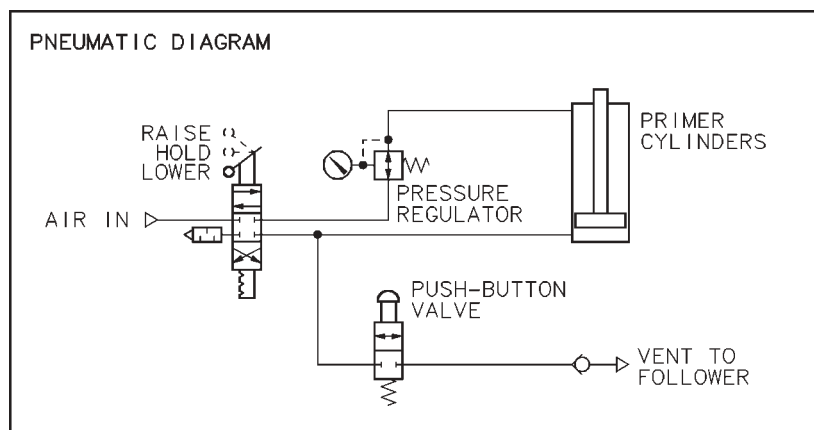
Adjust the air regulator on the pressure primer to set the priming pressure. Use only enough air pressure to allow the pump to prime. Excessive air pressure will cause the material in the drum to extrude past the follower rings. The regulator controls only the priming pressure and does not regulate the pressure to extract the follower.

To remove the follower from the drum, rotate the four-way valve handle upward. Depress the pushbutton valve to provide an air assist under the follower. Without this air assist, a vacuum forms under the follower, retarding upward movement.

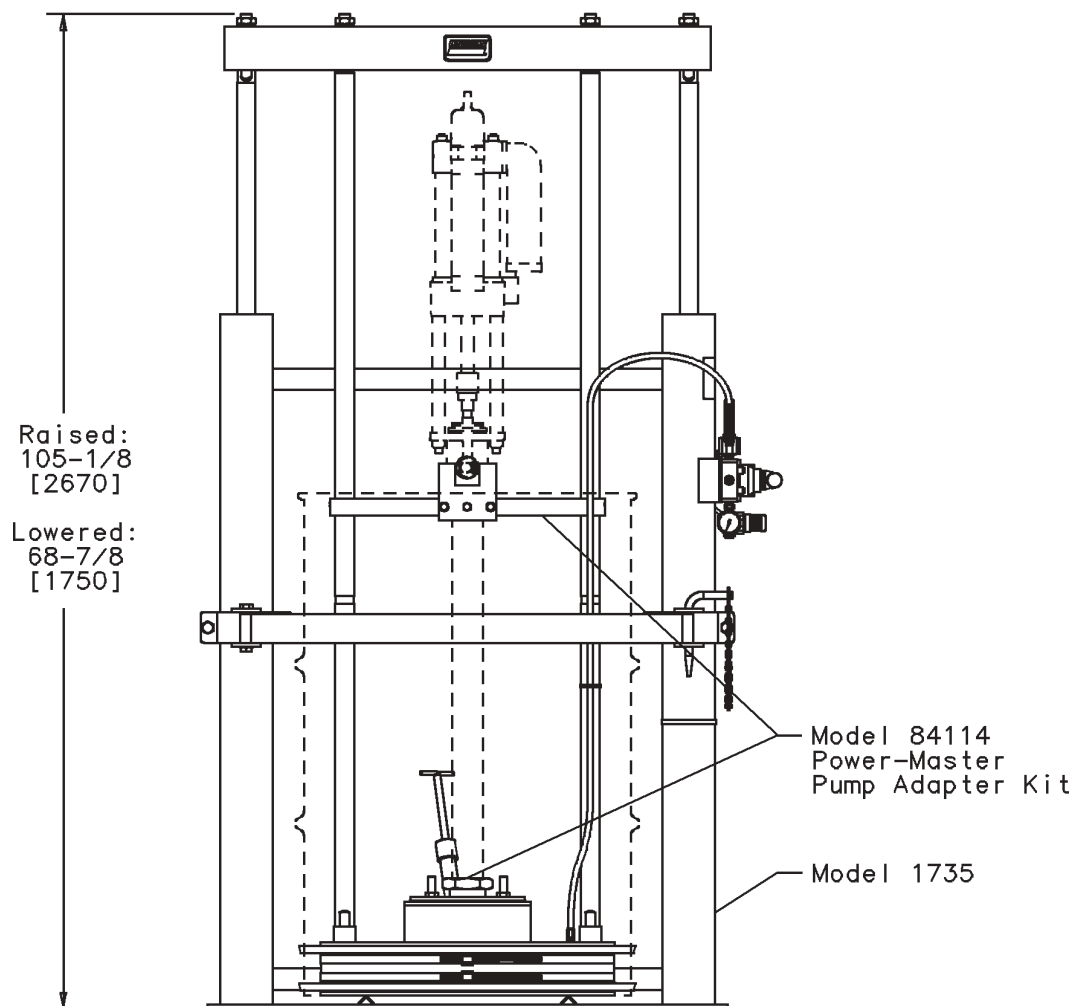
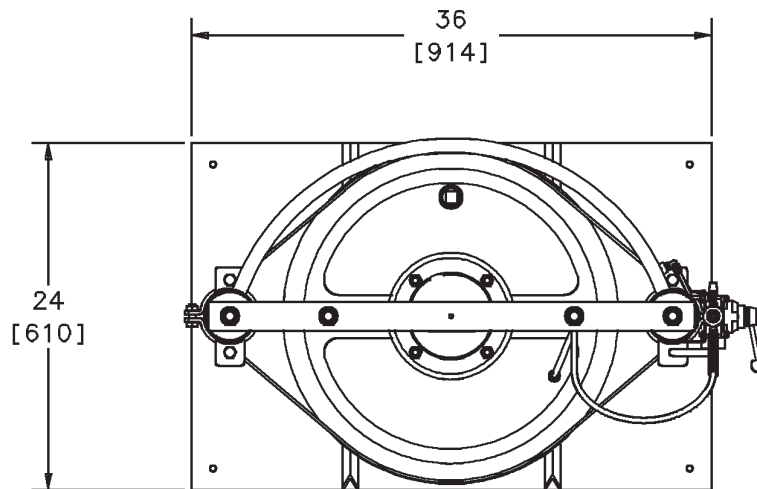
The four-way valve has a positive neutral position which permits stopping the follower in any position. The follower will remain in position even if the airline is disconnected.



**Model 1735
(For PileDriver Pumps)**

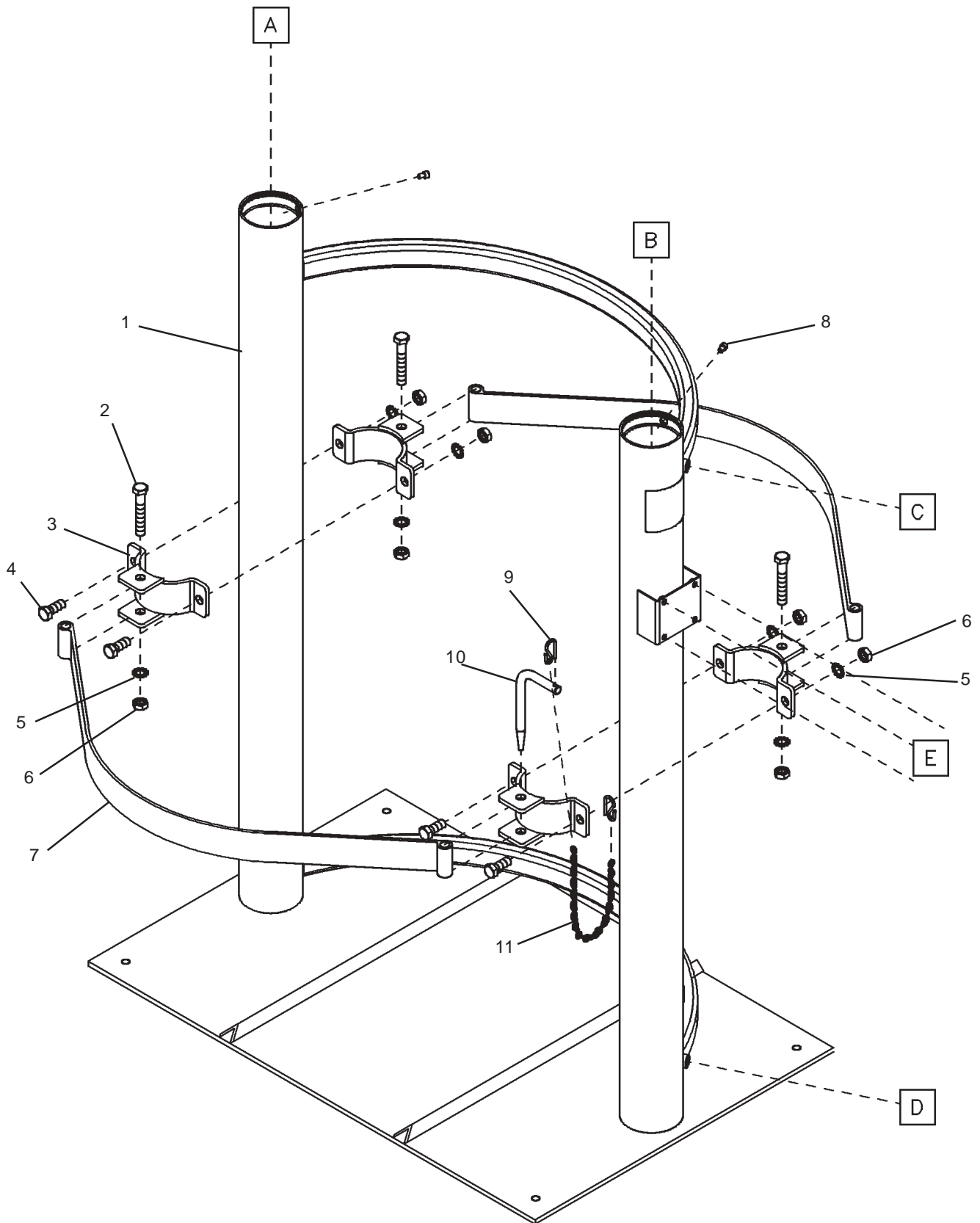


MODEL NO. 1735, 1736, 84114 PRESSURE PRIMER

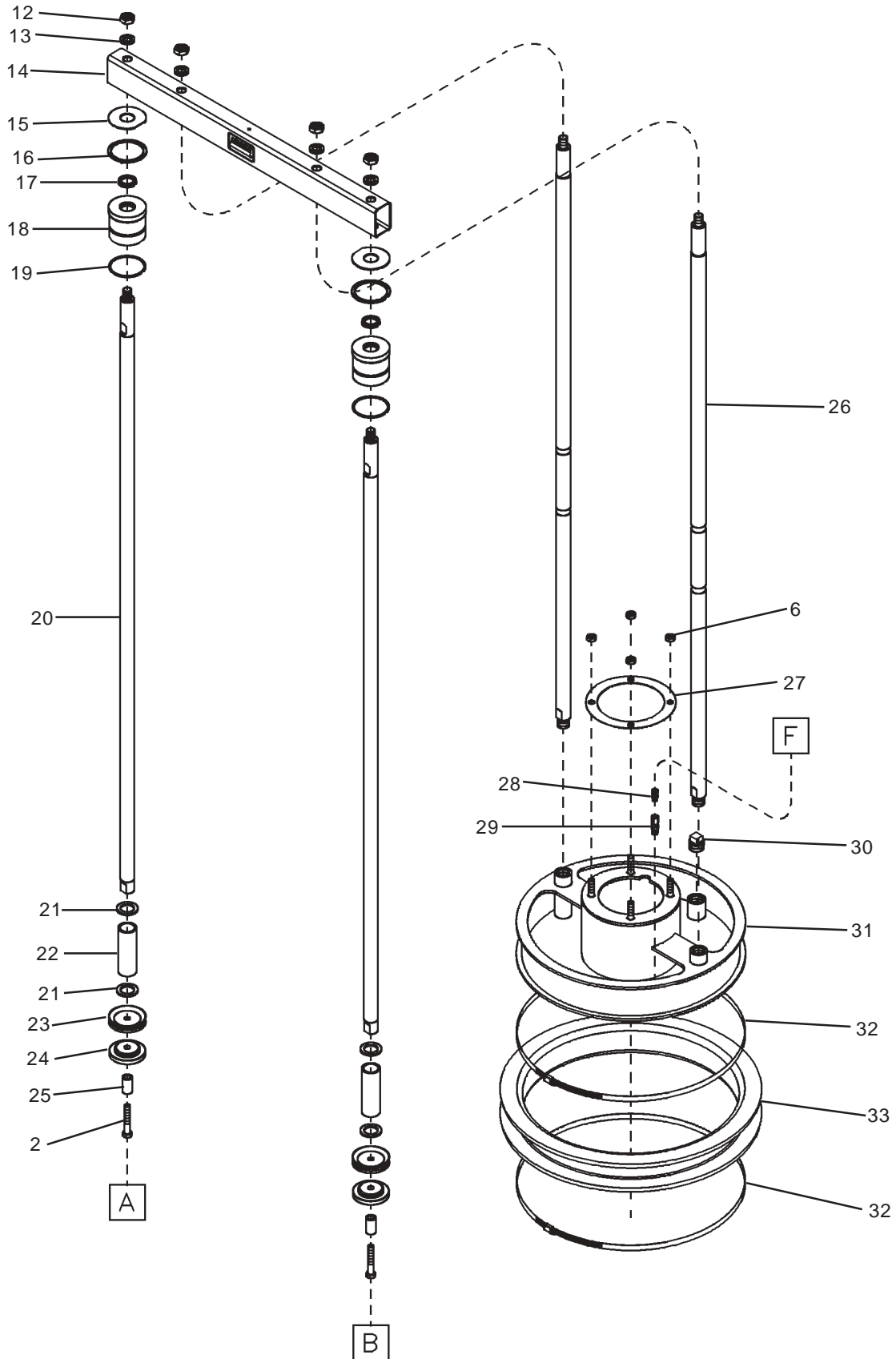


**MODEL 1736
(For PowerMaster Pumps)**

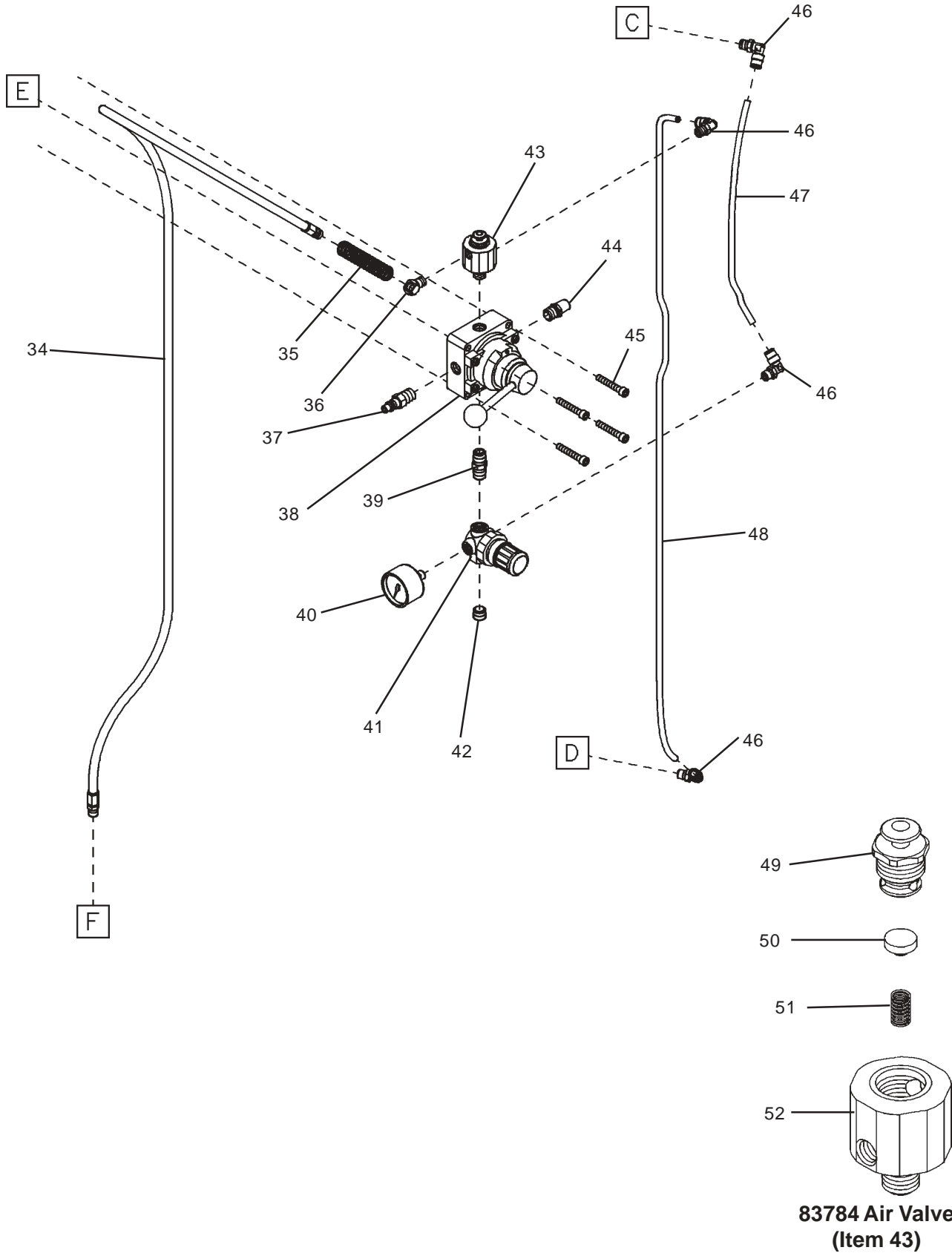
**MODEL NO. 1735, 1736, 84114
PRESSURE PRIMER**



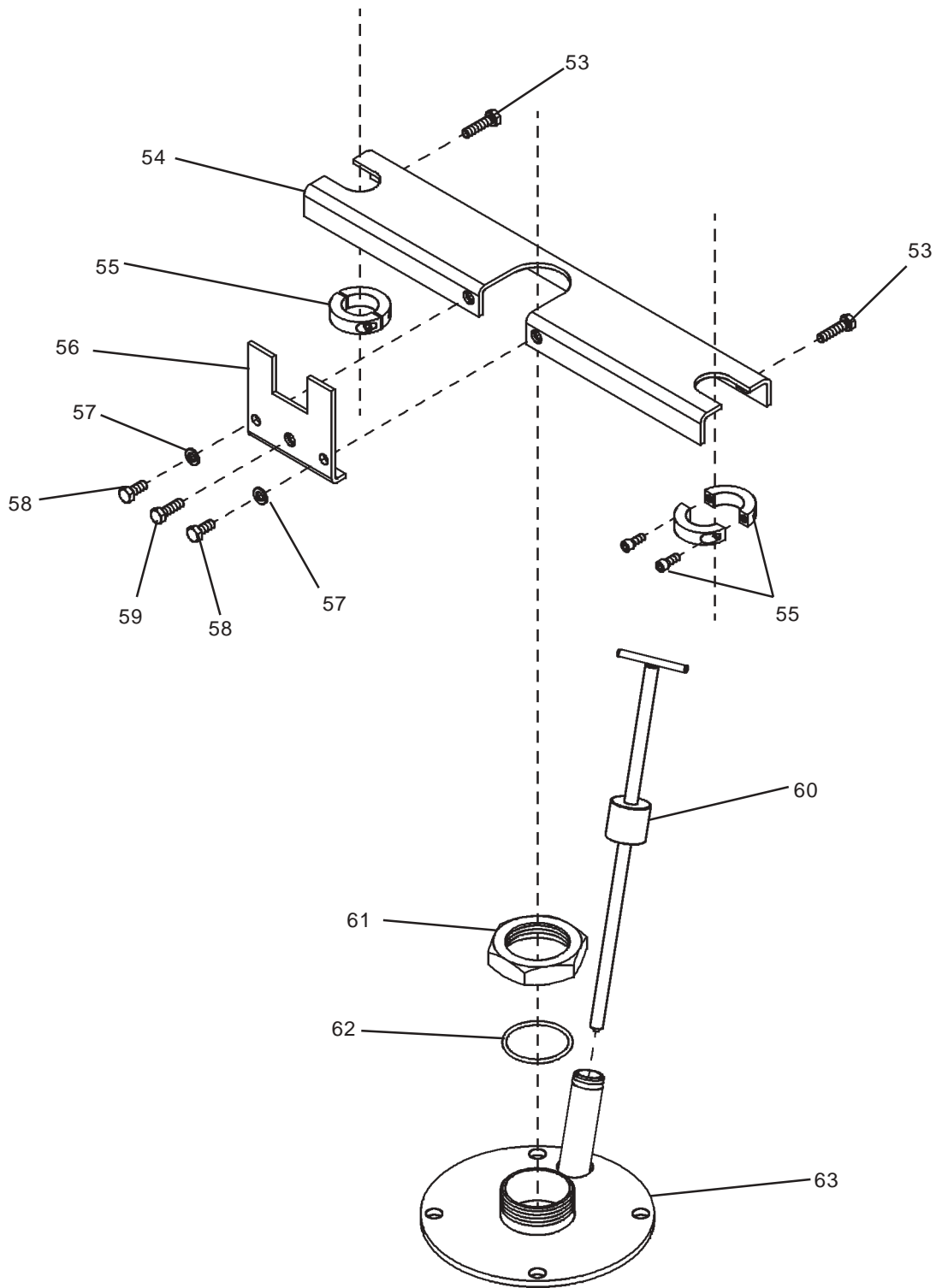
MODEL NO. 1735, 1736, 84114 PRESSURE PRIMER



MODEL NO. 1735, 1736, 84114 PRESSURE PRIMER



MODEL NO. 1735, 1736, 84114 PRESSURE PRIMER



**84114 ADAPTER KIT
FOR POWERMASTER PUMPS**

MODEL NO. 1735, 1736, 84114 PRESSURE PRIMER



SERVICE PARTS

Item No.	Part	Qty.	Description	Item No.	Part	Qty.	Description
1	272862	1	Baseplate	33	272596	1	Follower Wiper
2	272855	2	Hex Head Screw (1/2-13 x 3)	34	237172	1	Hose Assembly (3/16 ID)
3	272917	2	Clamp Weldment	35	55244	1	Spring
4	50068	4	Hex Head Screw (1/2-13 x 1-1/4)	36	20028	1	Angle Body (45 degrees)
5	66092	7	Lock Washer	37	244870	1	Air Nipple
6	51085	11	Hex Nut (1/2-13)	38	237588	1	Manual Valve
7	360615	2	Strap	39	10462	1	Nipple
8	50844	2	Socket Head Screw (1/4-20 x 3/8)	40	247843	1	Pressure Gauge
9	68592	2	S-hook	41	602003	1	Air Regulator
10	16530	1	Pin	42	67359	1	Pipe Plug (1/4 NPTF)
11	68593	1	Chain	43	83784	1	Air Valve
12	51017	4	Hex Jam Nut (3/4-16)	44	241691	1	Muffler
13	66193	4	Lock Washer	45	50051	4	Screw (4-way valve mounting)
14	272850	1	Support Beam	46	243699	4	Tube Fitting (1/4T x 1/8P elbow)
15	272858	2	Washer	47	272916	1	Tube (1/4" polyurethane x 11")
16	244997	2	Retaining Ring	48	272915	1	Tube (1/4" polyurethane x 38")
17	272860	2	U-cup Wiper	49	93502	1	Valve Assembly
18	272857	2	Bushing	50	34143	1	Packing
19	34414	2	O-ring (Nitrile)	51	55161	1	Spring
20	272851	2	Piston Rod	52	14469	1	Valve Body
21	34340	4	Gasket (Neoprene)	53	50142	2	Hex Head Screw (5/16-24 x 1-1/4)
22	272852	2	Spacer	54	93604	1	Channel Assembly
23	272856	2	Piston Cup	55	272967	2	Shaft Collar
24	272859	2	Piston Guide	56	93603	1	Support Bracket Assembly
25	272854	2	Spacer	57	66246	2	Lock Washer
26	272853	2	Tie Rod	58	50139	2	Hex Head Screw (5/16-24 x 3/4)
27	33072	1	Follower Gasket	59	50029	1	Hex Head Screw (5/16-24 x 1)
28	249251	1	Adapter Union	60	93075	1	Priming Plug
29	83995	1	Line Check	61	13266	1	Gland Nut
30	67346	1	Pipe Plug (1 NPTF)	62	34337	1	O-ring (Nitrile)
31	272905	1	Follower Plate Weldment	63	91629	1	Adapter Plate
32	272914	2	Follower Wiper Clamp				

Accessories

84141 3/4" Airline F-R-L Kit
 84144 1/2" Airline F-R-L Kit
 84143 Low Level Cut-Off kit

Americas:
 One Lincoln Way
 St. Louis, MO 63120-1578
 USA
 Phone +1.314.679.4200
 Fax +1.800.424.5359

Europe/Africa:
 Heinrich-Hertz-Str 2-8
 D-69183 Walldorf
 Germany
 Phone +49.6227.33.0
 Fax +49.6227.33.259

Asia/Pacific:
 25 Int'l Business Park
 #01-65 German Centre
 Singapore 609916
 Phone +65.562.7960
 Fax +65.562.9967

© Copyright 2003
 Printed in USA

Web site:
www.lincolnindustrial.com