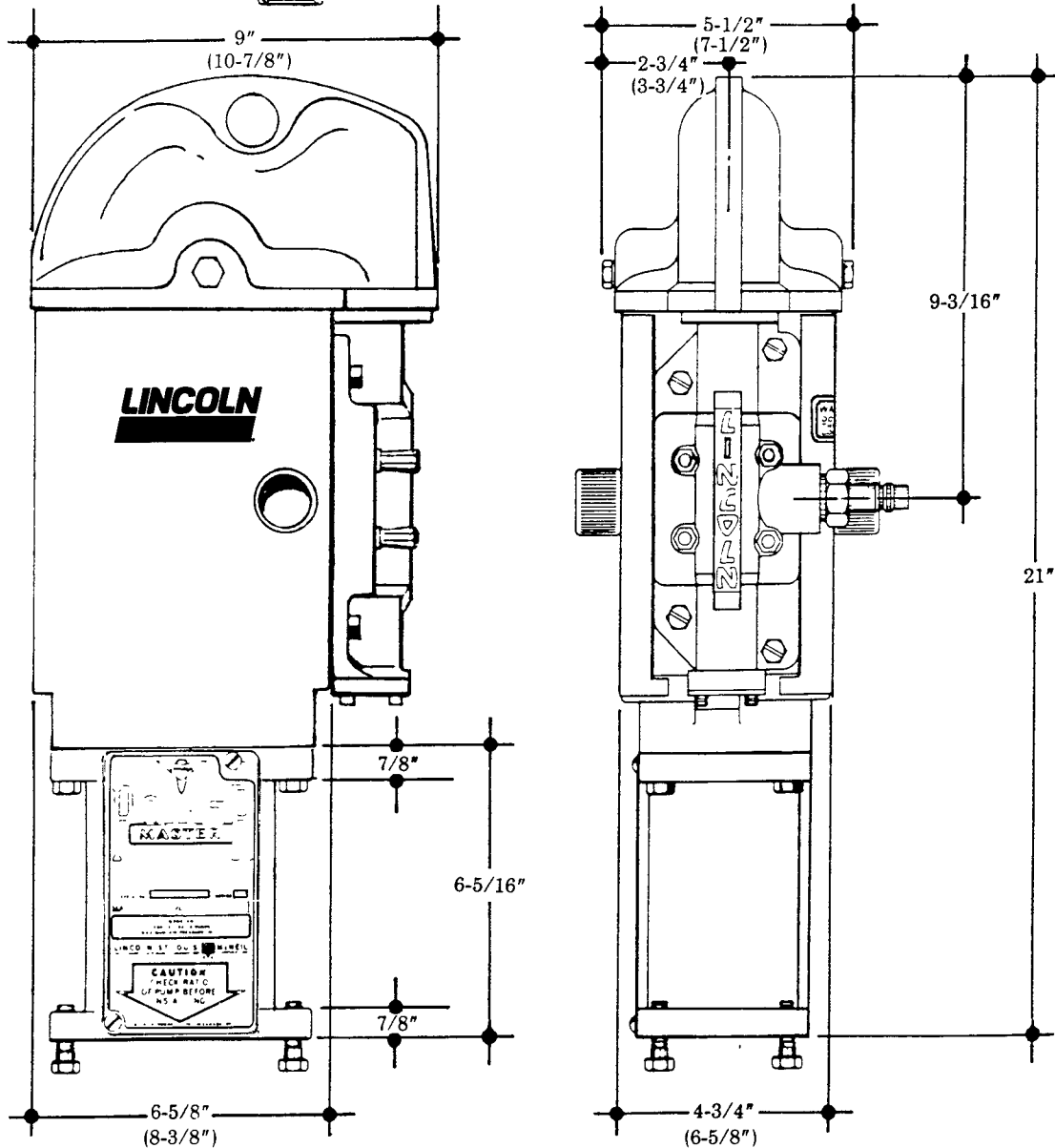
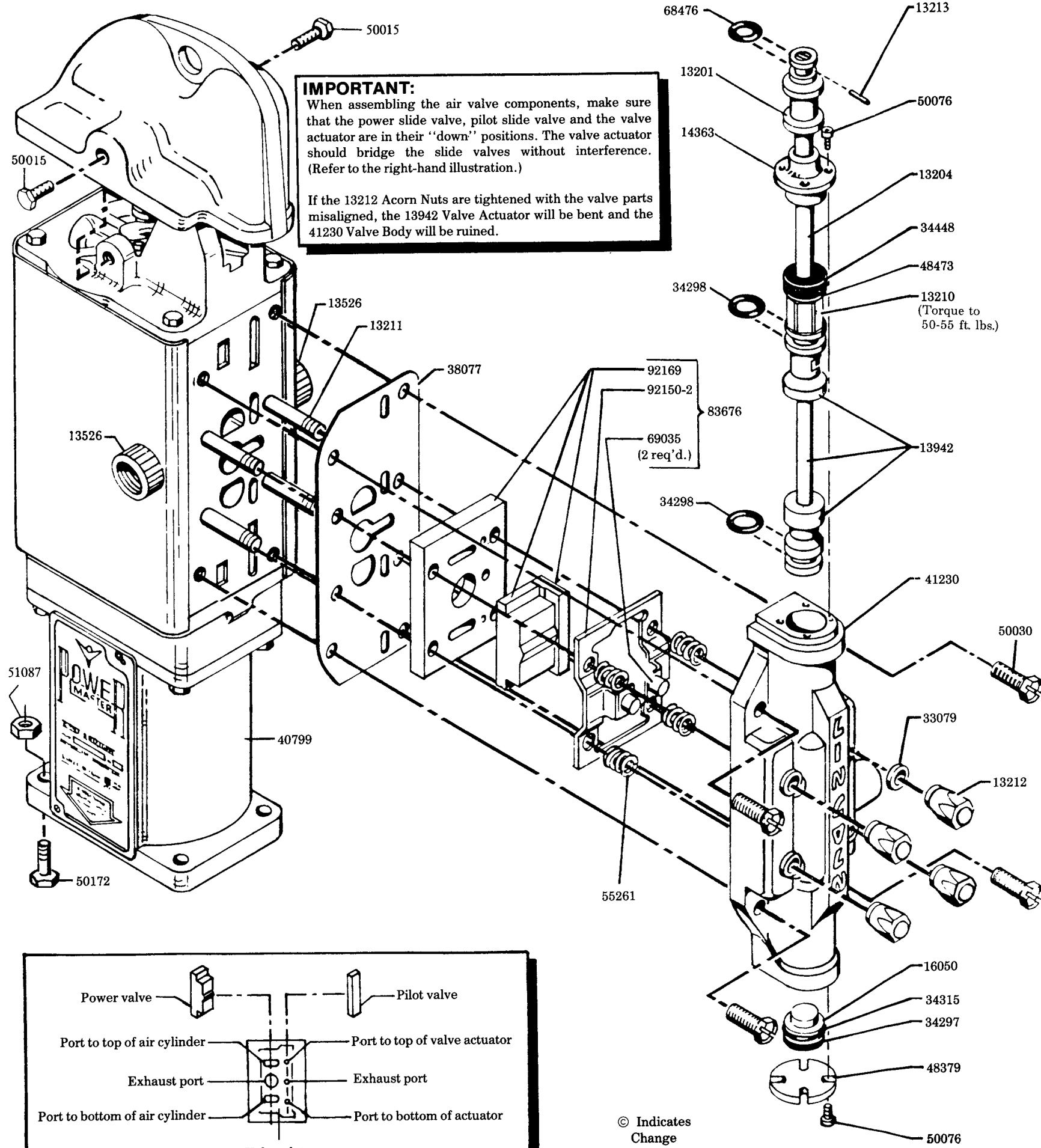


WARNING
DO NOT OPERATE
WITH COMBUSTIBLE GAS

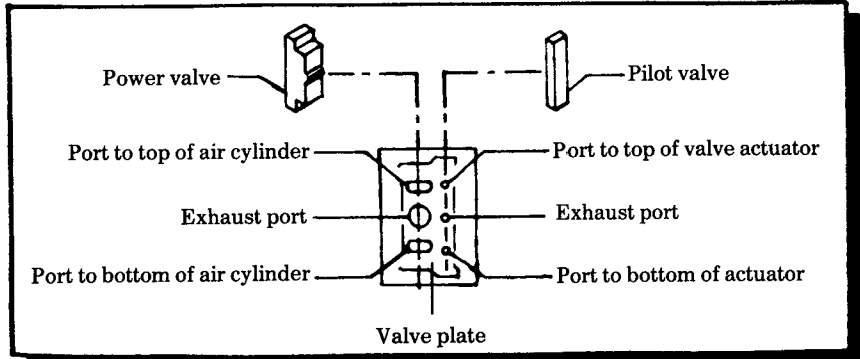
NOTE: 82736 dimensions are given in parentheses.





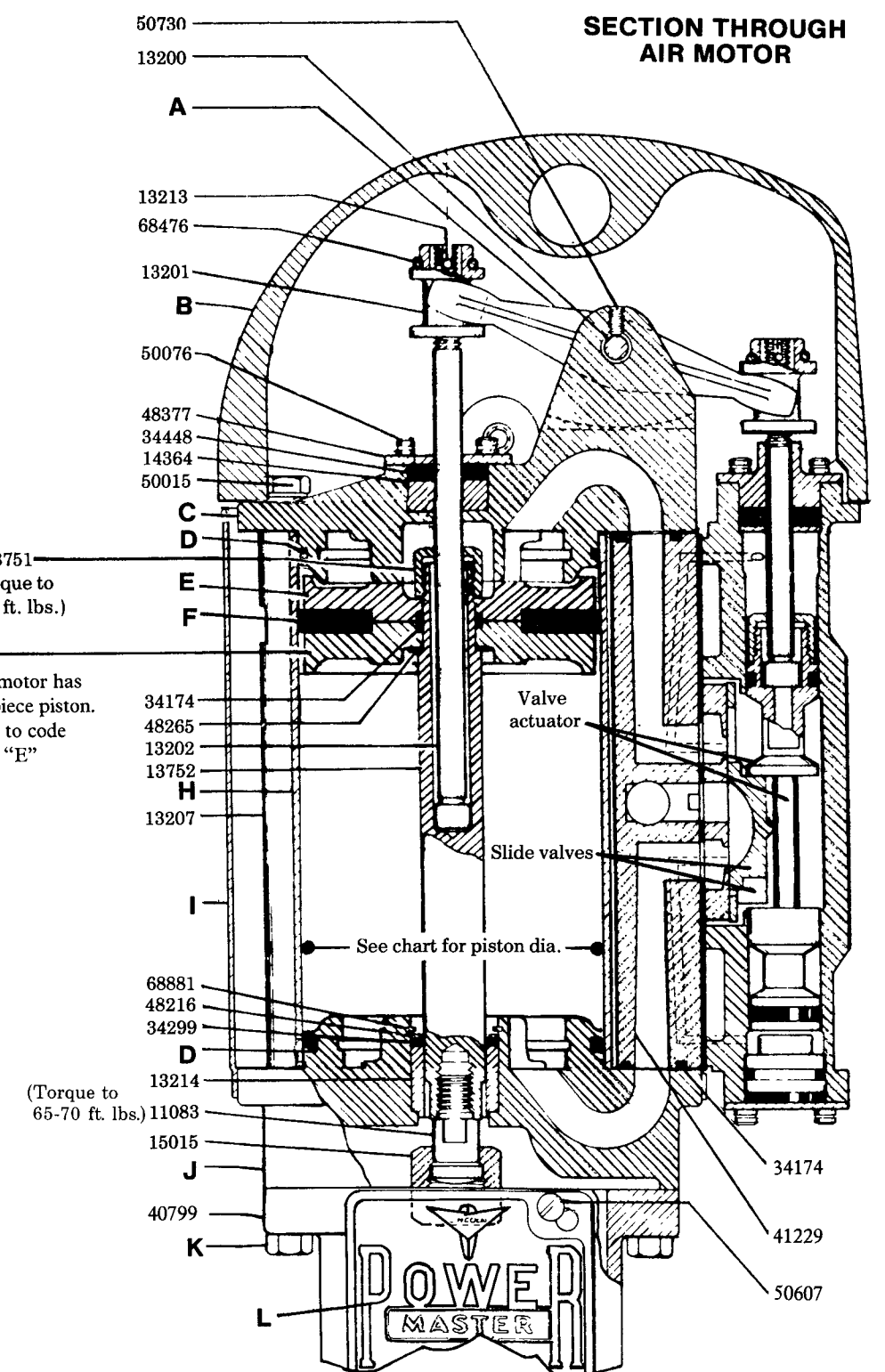
IMPORTANT:
 When assembling the air valve components, make sure that the power slide valve, pilot slide valve and the valve actuator are in their "down" positions. The valve actuator should bridge the slide valves without interference. (Refer to the right-hand illustration.)

If the 13212 Acorn Nuts are tightened with the valve parts misaligned, the 13942 Valve Actuator will be bent and the 41230 Valve Body will be ruined.



POWER & PILOT VALVES & AIR PASSAGE PORTS IN VALVE PLATE

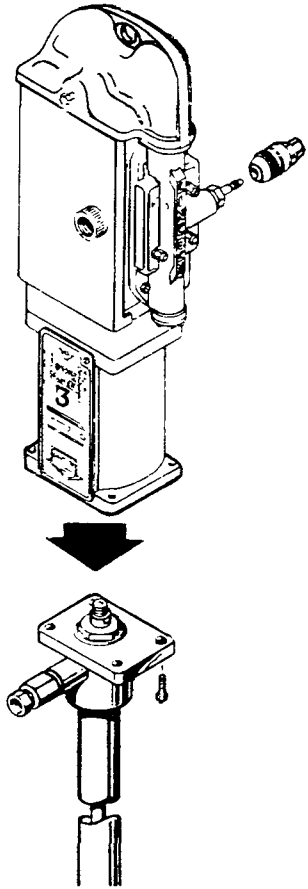
© Indicates Change



Code	Description	Piston diameter		
		3"	4-1/4"	6"
A	Rocker arm	13203	13203	13218
B	Cover	40426	40426	40429
C	Upper cylinder head	40797	40782	40428
D	O-ring (Buna-N)	34351	34295	34455
E	Piston	40433	41228	40616
F	D-packing (Buna-N)	34321	34294	34503
G	Piston	40433	41228	—
H	Air cylinder	61603	61425	61435
I	Sleeve	360313	360313	360320
J	Lower cylinder head	40796	40783	40524
K	Screw	50124	50124	50123
L	Serial plate	65240	65239	65241

ATTACHING AIR MOTOR TO PUMP TUBE

- 1** — Tightly connect airmotor coupling nut to the pump plunger.
- 2** — Attach airmotor to the pump outlet body flange with the four bolts & nuts (hand tight) supplied with airmotor.
- 3** — Slowly cycle the pump several times, using just enough air pressure to operate the pump without stalling.
- 4** — Stop the pump on an "up" stroke and tighten the four bolts & nuts to securely fasten the airmotor to the pumptube.



SERVICE PARTS

Qty.	Part	Description	Qty.	Part	Description	Qty.	Part	Description
1	11083	Coupling stud	1	15015	Coupling nut	1	48473	Washer
1	13200	Pin	1	16050	Spacer	*6	50015	Screw
2	13201	Trip rod collar	4	33079	Gasket	4	50030	Screw
1	13202	Trip rod	3	34174	O-ring	12	50076	Screw
1	13204	Trip rod	1	34297	Packing	4	50172	Bolt
2	13207	Tie rod	2	34298	Packing	2	50607	Screw
1	13210	Trip rod stop	1	34299	Packing	2	50730	Screw
4	13211	Stud	1	34315	O-ring	4	51087	Nut
4	13212	Acorn nut	2	34448	Packing	4	55261	Valve seat spring
2	13213	Pin	1	38077	Valve gasket	2	68476	Retaining ring
1	13214	Spacer	1	40799	Airmotor support casting	1	68881	Retaining ring
2	13526	Adapter	1	41229	Support	2	69035	Catch
1	13751	Trip rod stop	1	41230	Valve body	1	92150-2	Guide plate
1	13752	Piston rod	1	48216	Washer	1	92169	Valves & seat
1	13942	Valve actuator	1	48265	Washer	1	650112	Nipple
1	14363	Trip rod guide	1	48377	Washer	1	652008	Socket
1	14364	Trip rod guide	1	48379	Washer	1	652012	Socket

*10 required on 82736-6" Airmotor.

RETAIN THIS INFORMATION FOR FUTURE REFERENCE

When ordering replacement parts, list: Part Number, Description, Model Number, and Series Letter.

LINCOLN provides a Distributor Network that stocks equipment and replacement parts.