

POWER - MASTER

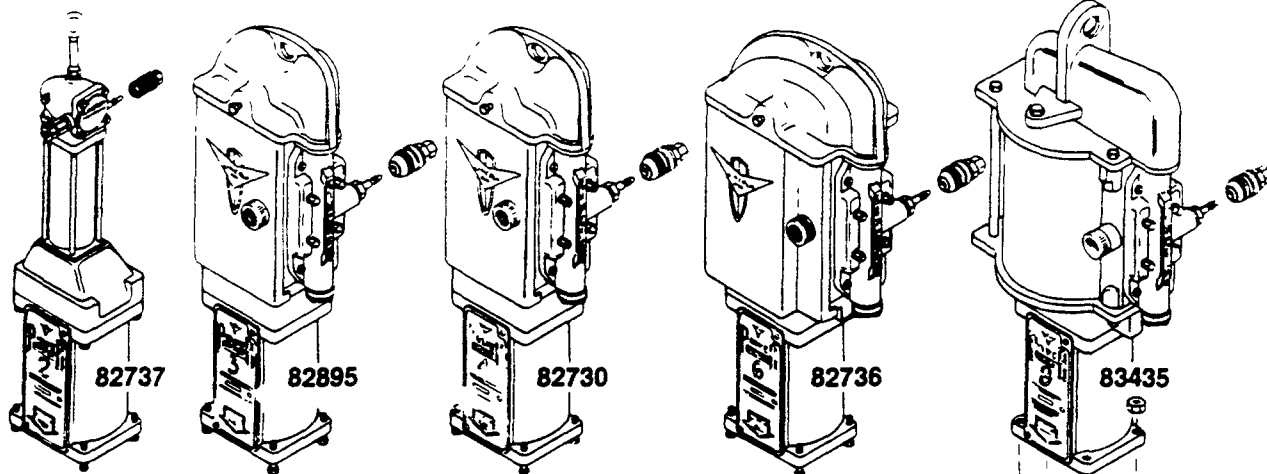
STUB PUMPTUBE

WARNING
DO NOT OPERATE
WITH COMBUSTIBLE GAS

Model 84335

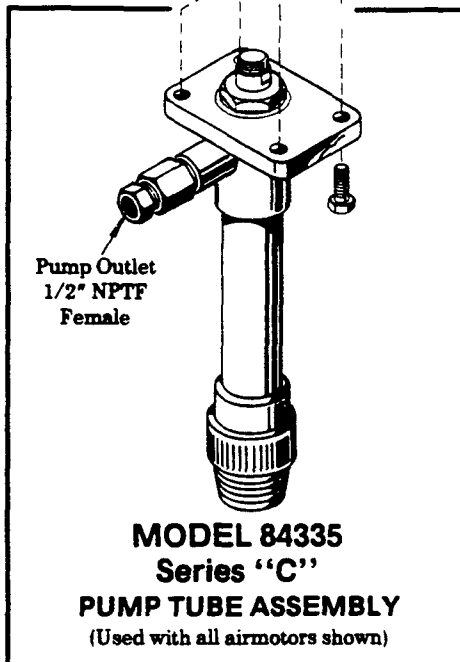
Series "C"

AIRMOTOR MODELS



ATTACHING AIRMOTOR TO PUMPTUBE

- 1- Tightly connect airmotor coupling nut to the pump plunger.
- 2- Attach airmotor to the pump outlet body flange with the four bolts and nuts (hand tight) supplied with airmotor.
- 3- Slowly cycle the pump several times, using just enough air pressure to operate the pump without stalling.
- 4- Stop the pump on an "up" stroke and tighten the four bolts and nuts to securely fasten the airmotor to the pumptube.



MODEL 84335
Series "C"
PUMP TUBE ASSEMBLY
(Used with all airmotors shown)

MODEL CHART

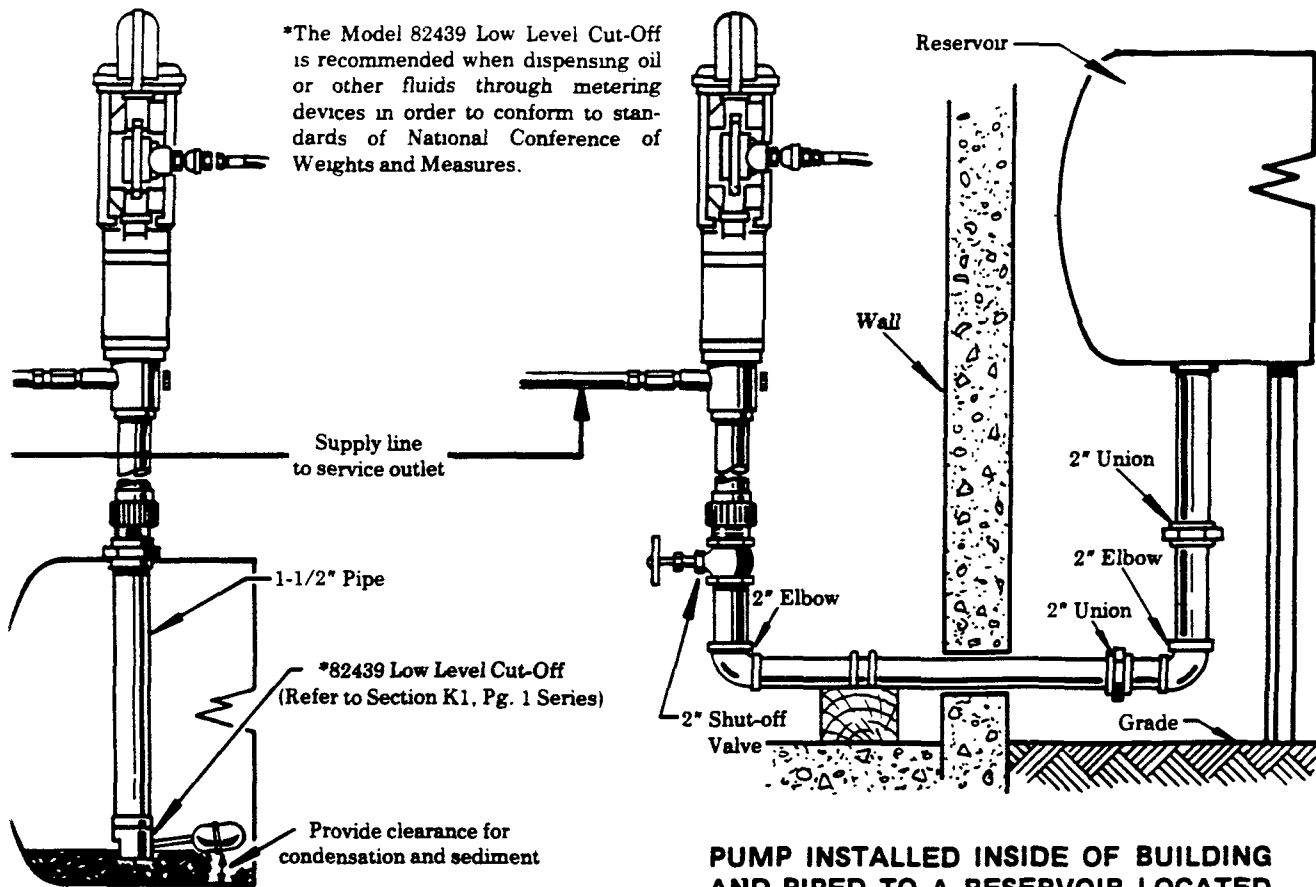
PUMP MODEL	*RATIO	MAXIMUM AIR PRESSURE	AIRMOTOR	AIRMOTOR SERVICE PAGE	PUMPTUBE
1940	4:1	200 psi	82737	A-50, Pg. 1	84335
1951	6:1	200 psi	82895	A-50, Pg. 3	84335
1914	12:1	200 psi	82730	A-50, Pg. 3	84335
1924	24:1	100 psi	82736	A-50, Pg. 3	84335
1964	42:1	100 psi	83435	A-50, Pg. 6	84335

*Size of airmotor used with pumptube assembly determines the pump ratio.



One Lincoln Way St. Louis, Missouri 63120-1578
(314) 679-4200 Telex 44881

SECTION - A50
PAGE - 43C

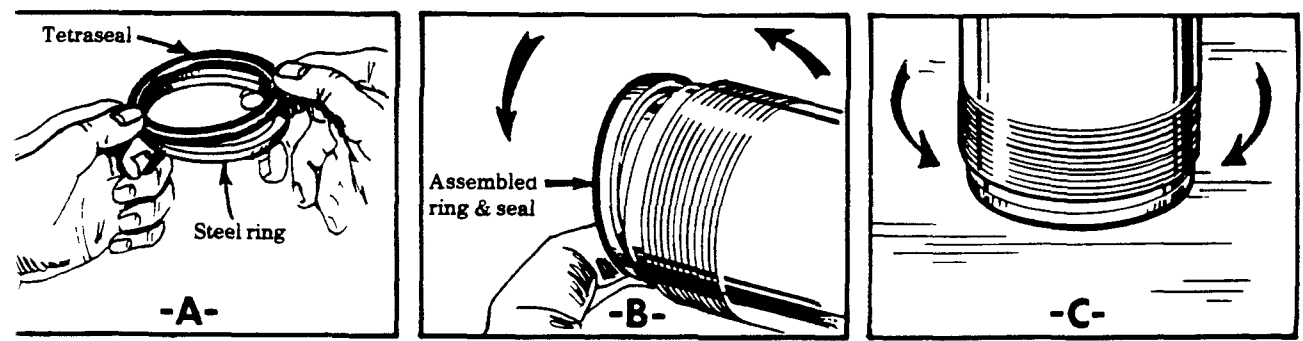


PUMP INSTALLED DIRECTLY IN RESERVOIR

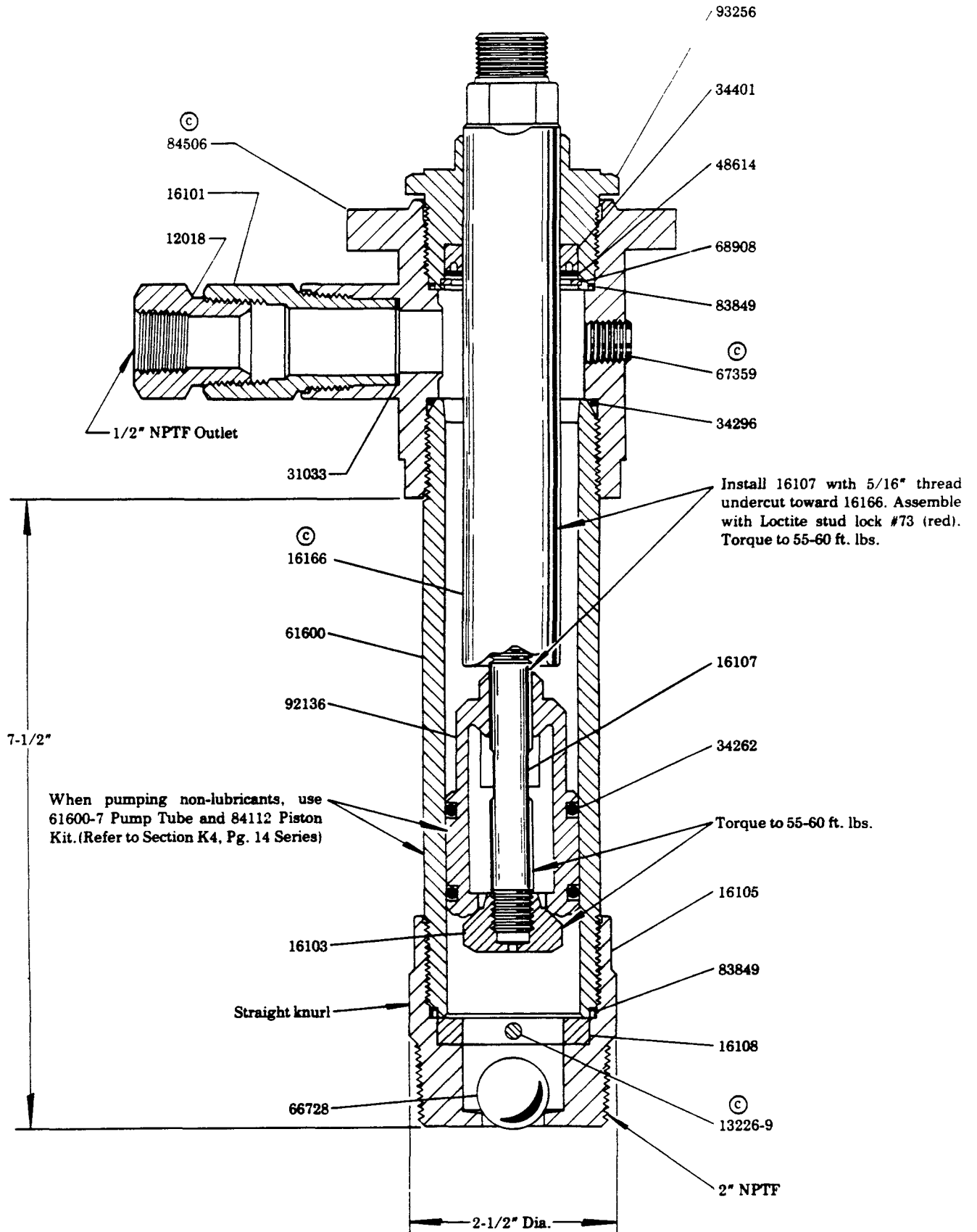
PUMP INSTALLED INSIDE OF BUILDING AND PIPED TO A RESERVOIR LOCATED ABOVE GROUND, PROVIDING A GRAVITY FLOW.

INSTALLATION OF 83849 PACKING ASSEMBLY

- 1- Insert tetraseal into steel ring as shown and holding in place with one thumb, press into ring with other hand.
- 2- Place assembled ring and seal on end of pump tube and hold with forefinger. Carefully invert tube and put end on a clean, flat surface. Withdraw finger.
- 3- Push tube downward with palm of hand and twist slightly to seat ring and seal. Turn tube right side up and check to see that tetraseal is firmly seated.
- 4- Similarly, install 83849 packing assembly onto 93256 gland nut. Clean seal cavities in outlet body and foot valve.



84335 PUMPTUBE ASSEMBLY



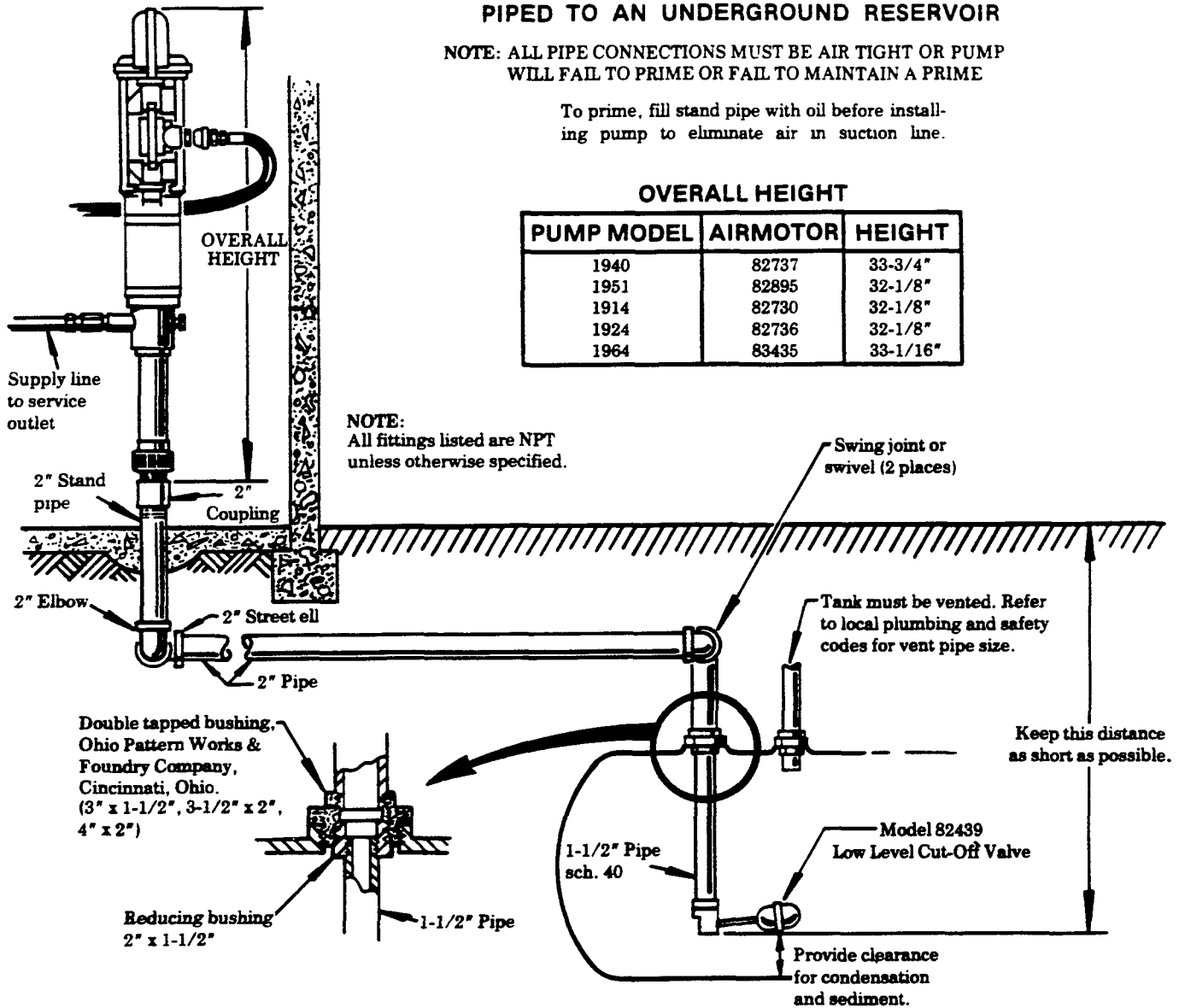
PUMP INSTALLED INSIDE BUILDING AND PIPED TO AN UNDERGROUND RESERVOIR

**NOTE: ALL PIPE CONNECTIONS MUST BE AIR TIGHT OR PUMP
WILL FAIL TO PRIME OR FAIL TO MAINTAIN A PRIME**

To prime, fill stand pipe with oil before install-
ing pump to eliminate air in suction line.

OVERALL HEIGHT

PUMP MODEL	AIRMOTOR	HEIGHT
1940	82737	33-3/4"
1951	82895	32-1/8"
1914	82730	32-1/8"
1924	82736	32-1/8"
1964	83435	33-1/16"



SERVICE PARTS

PART	QUAN.	DESCRIPTION	PART	QUAN.	DESCRIPTION
12018	1	Bushing	34401	1	U-cup packing
13226-9	1	Pin	48614	1	Washer
16101	1	Outlet adapter	61600	1	Pump tube
16103	1	Piston check	66728	1	Ball
16105	1	Foot valve body	67359	1	Pipe plug
16107	1	Piston rod	68908	1	Retaining ring
16108	1	Retainer	83849	2	Packing assembly
16166	1	Plunger rod	84506	1	Outlet body
31033	1	Gasket	92136	1	Piston
34262	2	O-ring	93256	1	Bushing & nut assembly
34296	1	O-ring			

RETAIN THIS INFORMATION FOR FUTURE REFERENCE

When ordering replacement parts, list: Part Number, Description, Model Number, and Series Letter.

LINCOLN provides a Distributor Network that stocks equipment and replacement parts.

A list of Authorized Service Departments will be furnished upon request.