

PILE DRIVER PUMPTUBE

FOR BULK GREASE SYSTEMS
(BALL TYPE FOOT VALVE)

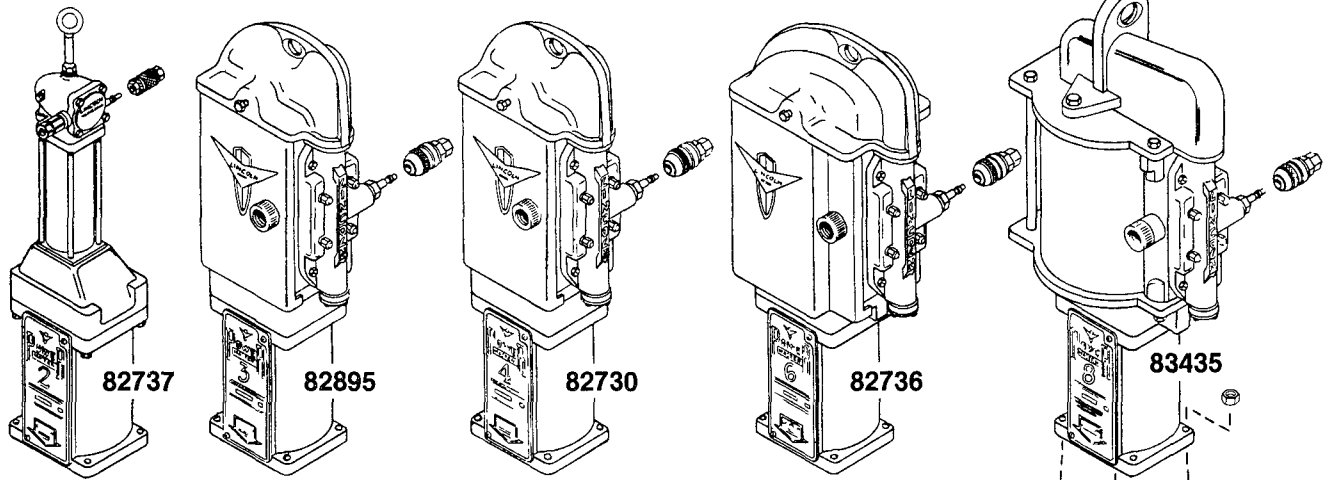


WARNING
DO NOT OPERATE
WITH COMBUSTIBLE GAS

Model 84370

Series "A"

AIRMOTOR MODELS



ATTACHING AIRMOTOR TO PUMPTUBE

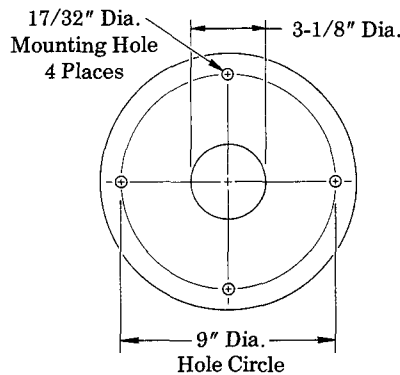
- 1- Tightly connect airmotor coupling nut to pump plunger.
- 2- Attach airmotor to the pump outlet body flange with the four bolts and nuts (hand tight) supplied with airmotor.
- 3- Slowly cycle the pump several times, using just enough air pressure to operate the pump without stalling.
- 4- Stop the pump on an "up" stroke and tighten the four bolts and nuts to securely fasten the airmotor to the pumptube.

GLAND PACKING LUBE WELL

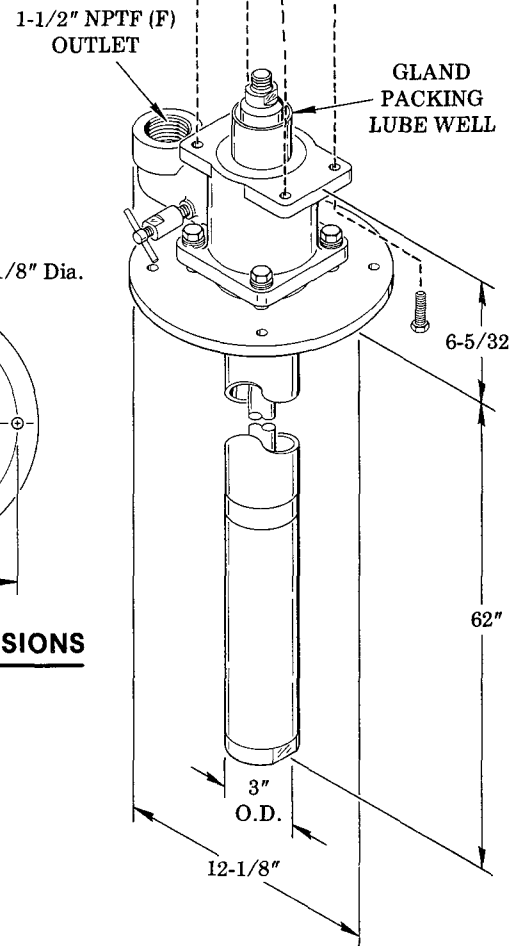
Many materials such as ink, undercoating, buffing compounds, etc. tend to build up and dry out on the pump rod. This causes the gland packings to wear out rapidly. To prevent material buildup on the pump rod, fill the lube well with a fluid compatible with the material that is to be pumped.

The lube well is accessible for inspection and filling by removing the Power-Master name plate from the side of the airmotor.

CAUTION: Do not fill lube well to full capacity as the reciprocating movement of the airmotor piston rod may draw the fluid into the airmotor.



MOUNTING DIMENSIONS



AIRMOTOR SELECTION CHART

(*Size of airmotor used with pumptube determines pump ratio.)

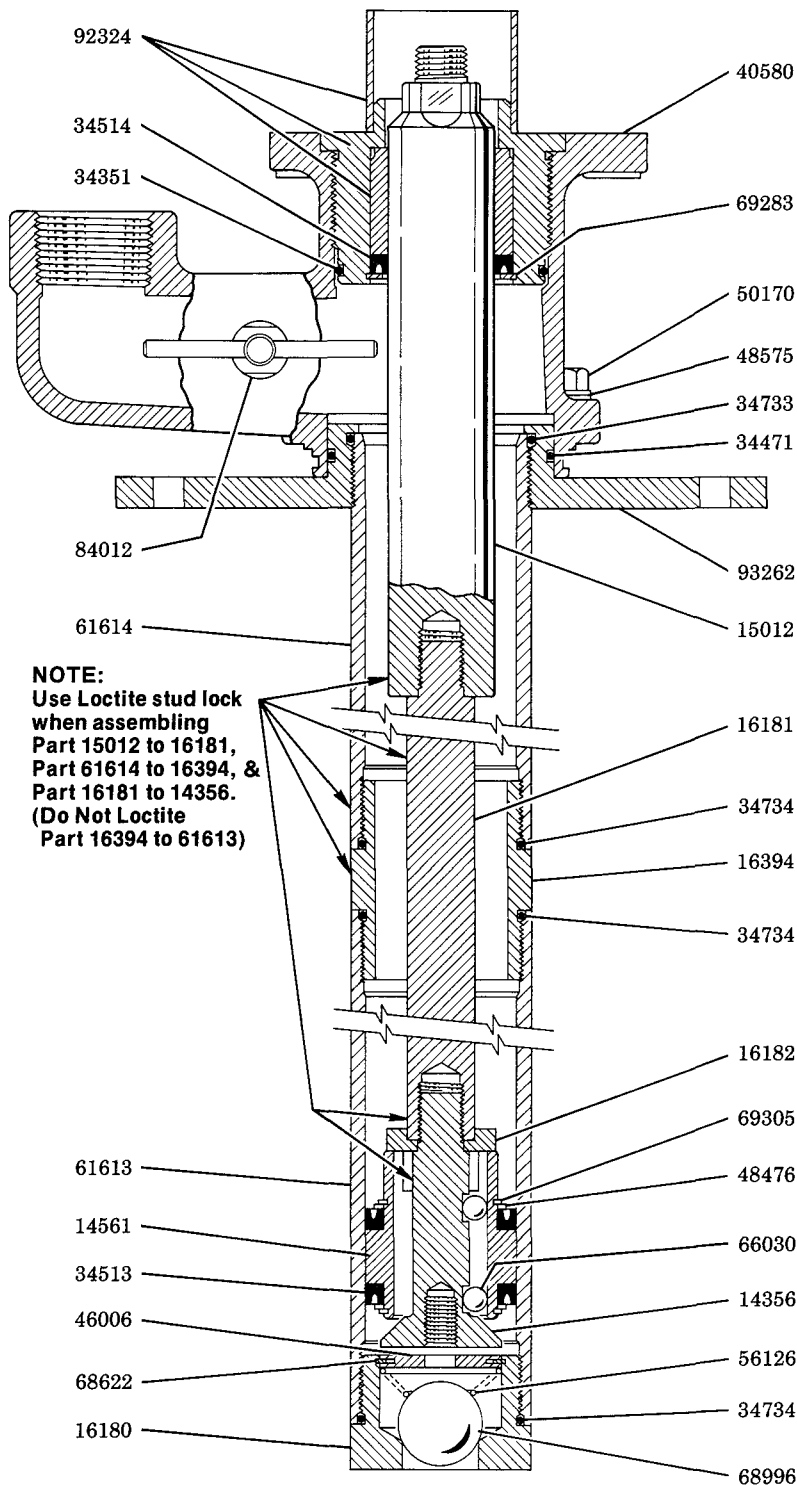
PUMPTUBE	AIRMOTOR	*RATIO	MAXIMUM AIR PRESSURE	AIRMOTOR SERVICE PAGE
84370	82737	1.5:1	200 psi	A-50, Pg. 1 Series
	82895	2.5:1	200 psi	A-50, Pg. 3 Series
	82730	5:1	200 psi	A-50, Pg. 3 Series
	82736	10:1	100 psi	A-50, Pg. 3 Series
	83435	18:1	100 psi	A-50, Pg. 6 Series

LINCOLN ST. LOUIS
4010 GOODFELLOW BLVD · ST LOUIS, MO 63120 · (314) 383 5900



SECTION - **A50**
PAGE - **52**

84370 PUMPTUBE ASSEMBLY Series "A"



NOTE:
Use Loctite stud lock
when assembling
Part 15012 to 16181,
Part 61614 to 16394, &
Part 16181 to 14356.
(Do Not Loctite
Part 16394 to 61613)

OPTIONAL: 83980 Teflon Packing Conversion Kit.
Refer to Service Manual
Section K4, Pg. 23 Series.

SERVICE OF LOWER PUMPING UNIT

Loss of volume and pressure or continuous operation of pump when not in normal use indicates:

- 1) Material supply in tank may not be adequate.
- 2) Air supply may not be adequate. Check setting of air supply line regulator.
- 3) Pump may operate on down stroke only, due to material by-passing the 14356 Check and piston. Remove and clean parts. Inspect seating surfaces for wear. Replace if necessary.
- 4) Material by-passing the piston packings. 34513 U-cup Packings may be worn or damaged. Replace packings. Inside of 61613 Pump Tube may be scored or rough. Remove and inspect pump tube. If area inside of tube where piston packings travel is scored or rough, replace the pump tube.
- 5) Pump is operating but not dispensing material. 68996 Ball Check in foot valve is not seating. Inspect ball check and seat for foreign particles or wear. Also inspect 34734 O-ring on foot valve body. Replace parts if necessary.
- 6) Material by-passing 34514 U-cup Packing in gland assembly. Replace packing.
- 7) Plunger may be scored, pitted or worn. Replace plunger.

NOTE: 69294 Face Spanner Wrench is available for service of pumptube assembly.

SERVICE PARTS

PART	QUAN.	DESCRIPTION
14356	1	Check
*14561	1	Piston
*15012	1	Plunger
*16180	1	Foot valve body
16181	1	Connecting rod
16182	1	Piston stop
16394	1	Pump tube connector
*34351	1	O-ring
*34471	1	O-ring
*34513	2	U-cup packing
*34514	1	U-cup packing
*34733	1	O-ring
*34734	3	O-ring
40580	1	Outlet body
46006	1	Ball stop
48476	2	Washer
48575	**	Washer
50170	4	Screw
56126	1	Spring
61613	1	Pump tube
61614	1	Pump tube
66030	6	Ball
68622	1	Retaining ring
*68996	1	Ball
69283	1	Retaining ring
69305	2	Retaining ring
84012	1	Bleeder valve
92324	1	Bushing & gland nut assembly
93262	1	Tube adapter & plate

*Recommended service parts inventory.

**As required for max. engagement of 50170 Screw and 93262 Plate. Screw must not protrude through plate.

RETAIN THIS INFORMATION FOR FUTURE REFERENCE

When ordering replacement parts, list: Part Number, Description, Model Number, and Series Letter.

LINCOLN ST. LOUIS provides a Distributor Network that stocks equipment and replacement parts.

A list of Authorized Service Departments will be furnished upon request.