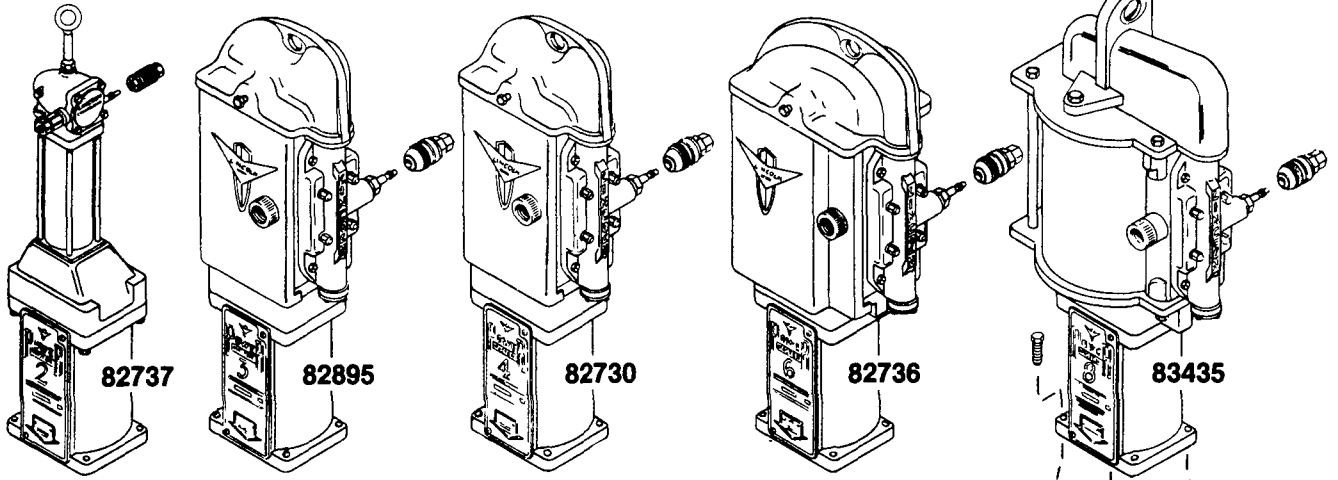


WARNING
DO NOT OPERATE
WITH COMBUSTIBLE GAS

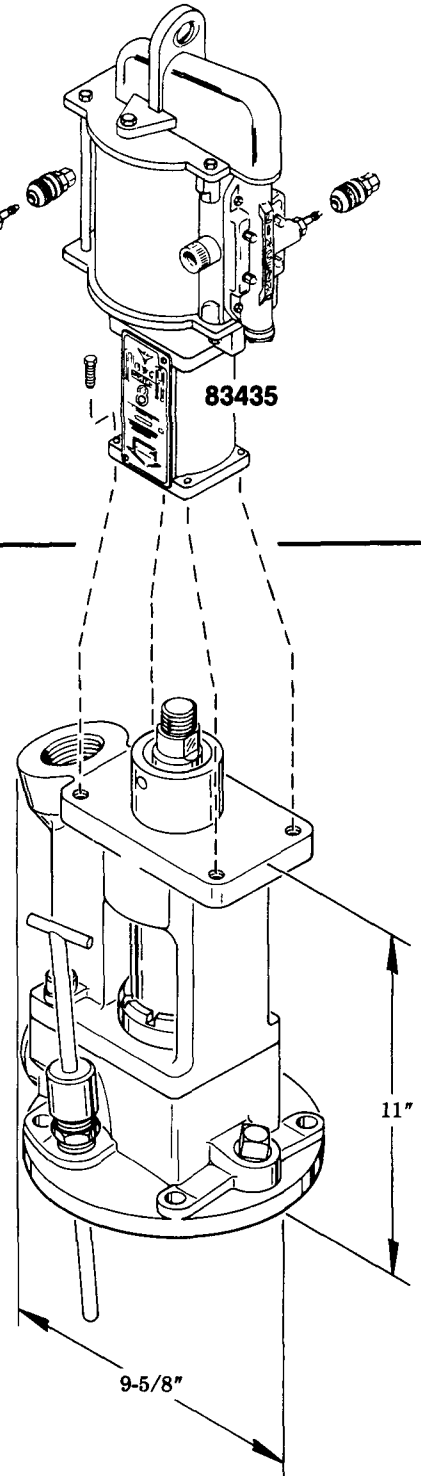
PILE DRIVER II PUMPS (BALL TYPE FOOT VALVE)

AIRMOTOR MODELS



ATTACHING AIRMOTOR TO PUMPTUBE

- 1- Tightly connect airmotor coupling nut to pump plunger.
- 2- Attach airmotor to the pump outlet body flange with the four bolts (hand tight) supplied with airmotor.
- 3- Slowly cycle the pump several times, using just enough air pressure to operate the pump without stalling.
- 4- Stop the pump on an "up" stroke and tighten the four bolts to securely fasten the airmotor to the pumptube.



MODEL CHART

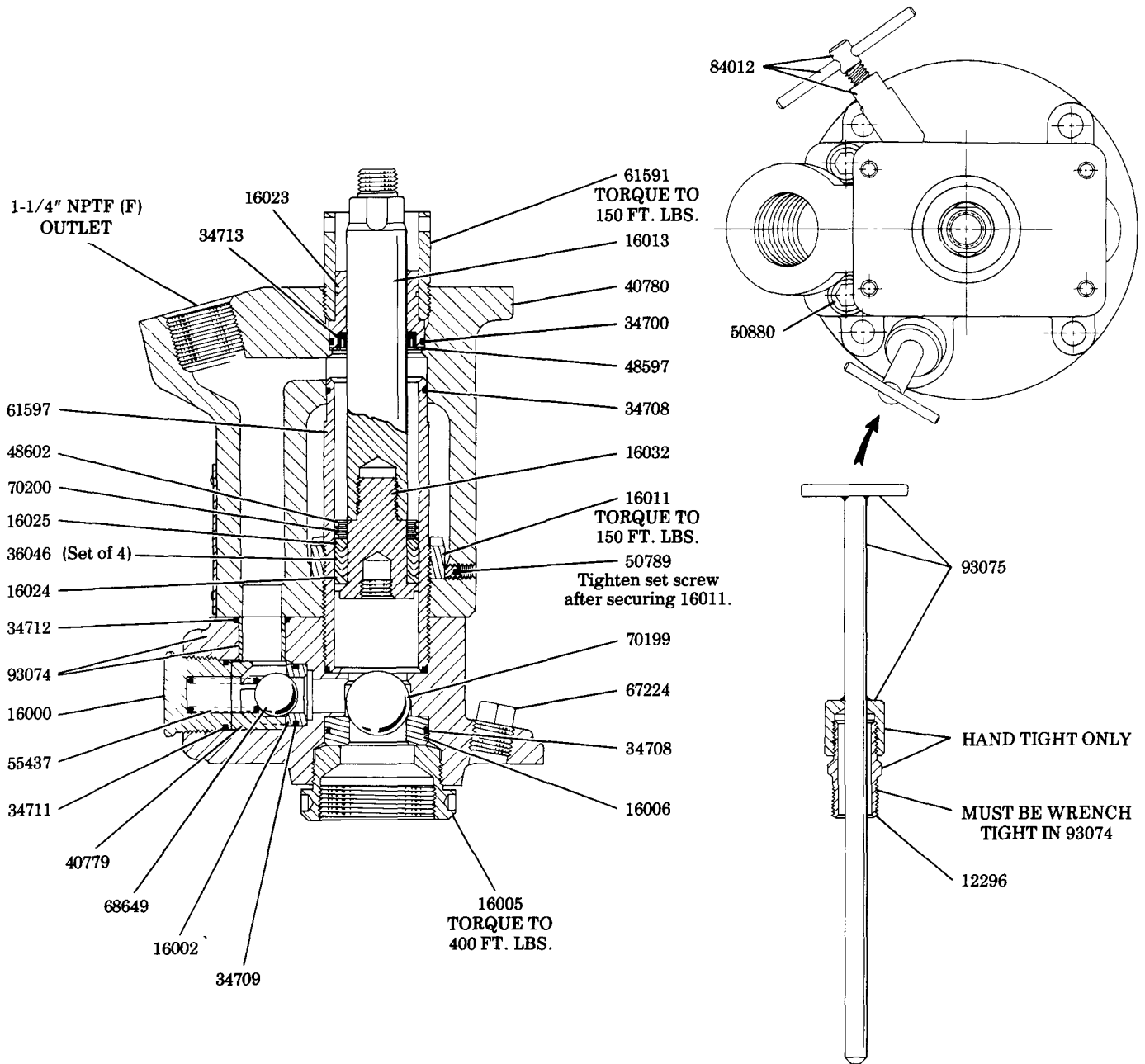
(*Size of airmotor used with pumptube determines pump ratio.)

PUMPTUBE	PUMP MODEL	*RATIO	MAXIMUM AIR PRESSURE	AIRMOTOR	AIRMOTOR SERVICE PAGE
84402	2202	3:1	200 psi	82737	A-50, Pg. 1 Series
	2222	4.5:1	200 psi	82895	A-50, Pg. 3 Series
	2242	9:1	200 psi	82730	A-50, Pg. 3 Series
	2262	18:1	100 psi	82736	A-50, Pg. 3 Series
	2282	32:1	100 psi	83435	A-50, Pg. 6 Series

LINCOLN ST. LOUIS
4010 GOODFELLOW BLVD • ST LOUIS, MO 63120 • (314) 383-5900



SECTION - **A50**
PAGE - **54**



SERVICE PARTS

PART	QUAN.	DESCRIPTION	PART	QUAN.	DESCRIPTION	PART	QUAN.	DESCRIPTION
12296	1	Nipple	34708	3	O-ring	55437	1	Spring
16000	1	Check housing	34709	1	O-ring	61591	1	Gland nut
16002	1	Check seat	34711	1	O-ring	61597	1	Cylinder
16005	1	Retaining bushing	34712	1	O-ring	67224	1	Pipe plug
16006	1	Check seat	34713	1	U-cup packing	68649	1	Steel ball
16011	1	Thrust nut	36046	1	Vee packing set (4)	70199	1	Steel ball
16013	1	Plunger	40779	1	Ball cage	70200	6	Wave washer
16023	1	Bushing	40780	1	Outlet pump casting	84012	1	Bleeder valve
16024	1	Female adapter	48597	1	Retaining washer	93074	1	Inlet casting & sleeve assembly
16025	1	Male adapter	48602	3	Washer	93075	1	Priming plug assembly
16032	1	Piston bolt	50789	1	Screw			
34700	1	O-ring	50880	2	Screw			

RETAIN THIS INFORMATION FOR FUTURE REFERENCE

When ordering replacement parts, list: Part Number, Description, Model Number, and Series Letter.

LINCOLN ST. LOUIS provides a Distributor Network that stocks equipment and replacement parts.

A list of Authorized Service Departments will be furnished upon request.