

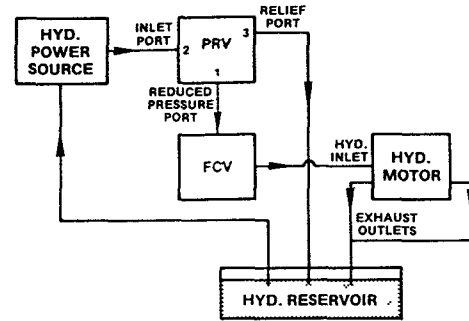
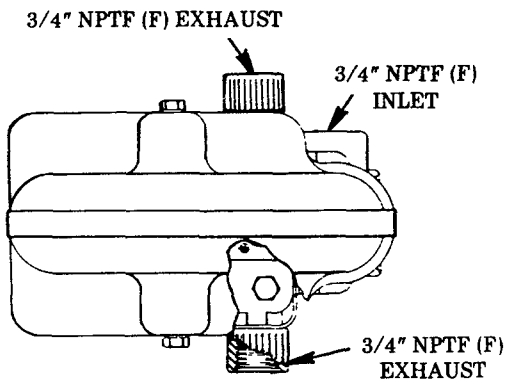
3" HYDRAULIC MOTOR

200 PSI MAX. HYDRAULIC INPUT PRESSURE

Model 84566

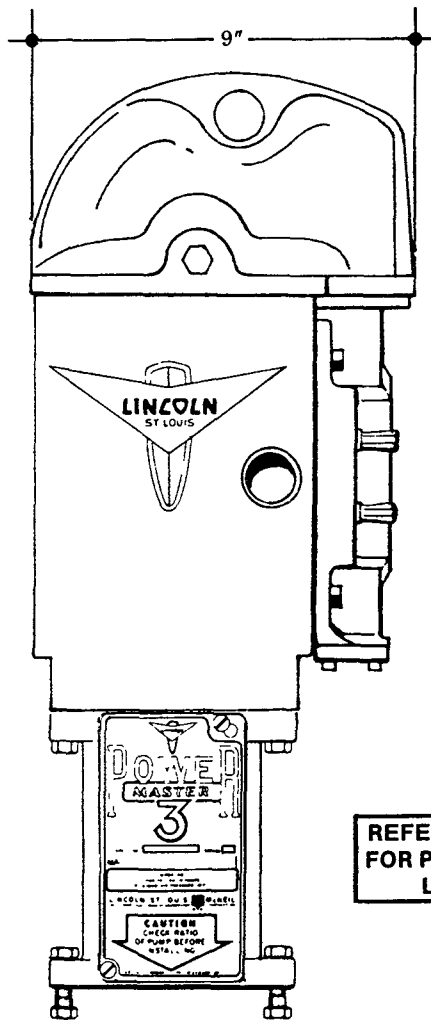
IMPORTANT

MAXIMUM HYDRAULIC OIL TEMPERATURE: 150° F.
(If higher temperature is required, contact factory.)

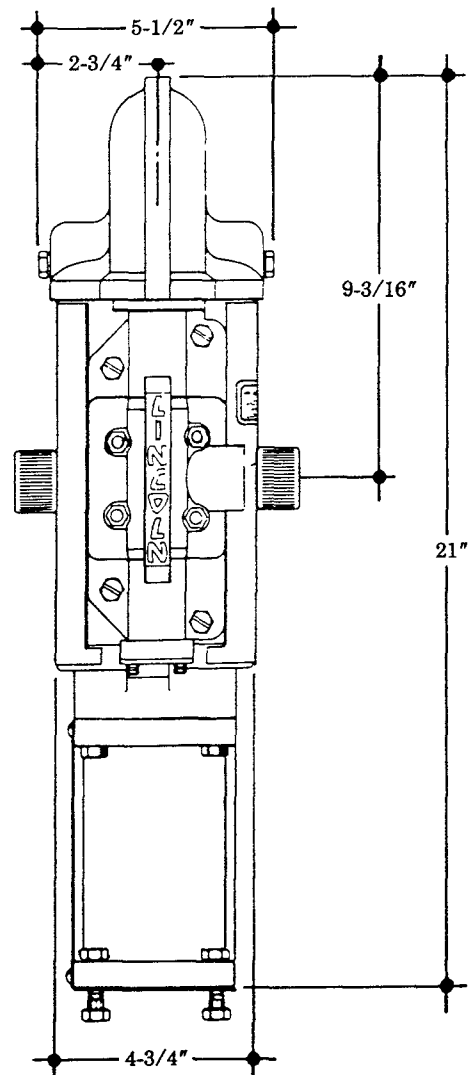


WARNING

To prevent overstressing of pumptube, system must be installed using a Pressure Reducing Valve (PRV) and a Flow Control Valve (FCV) as shown. Relief port on PRV must be connected to hydraulic reservoir by a separate line. Any pressure increase in this line will be accumulative at the reduced pressure port (inlet line to FCV).



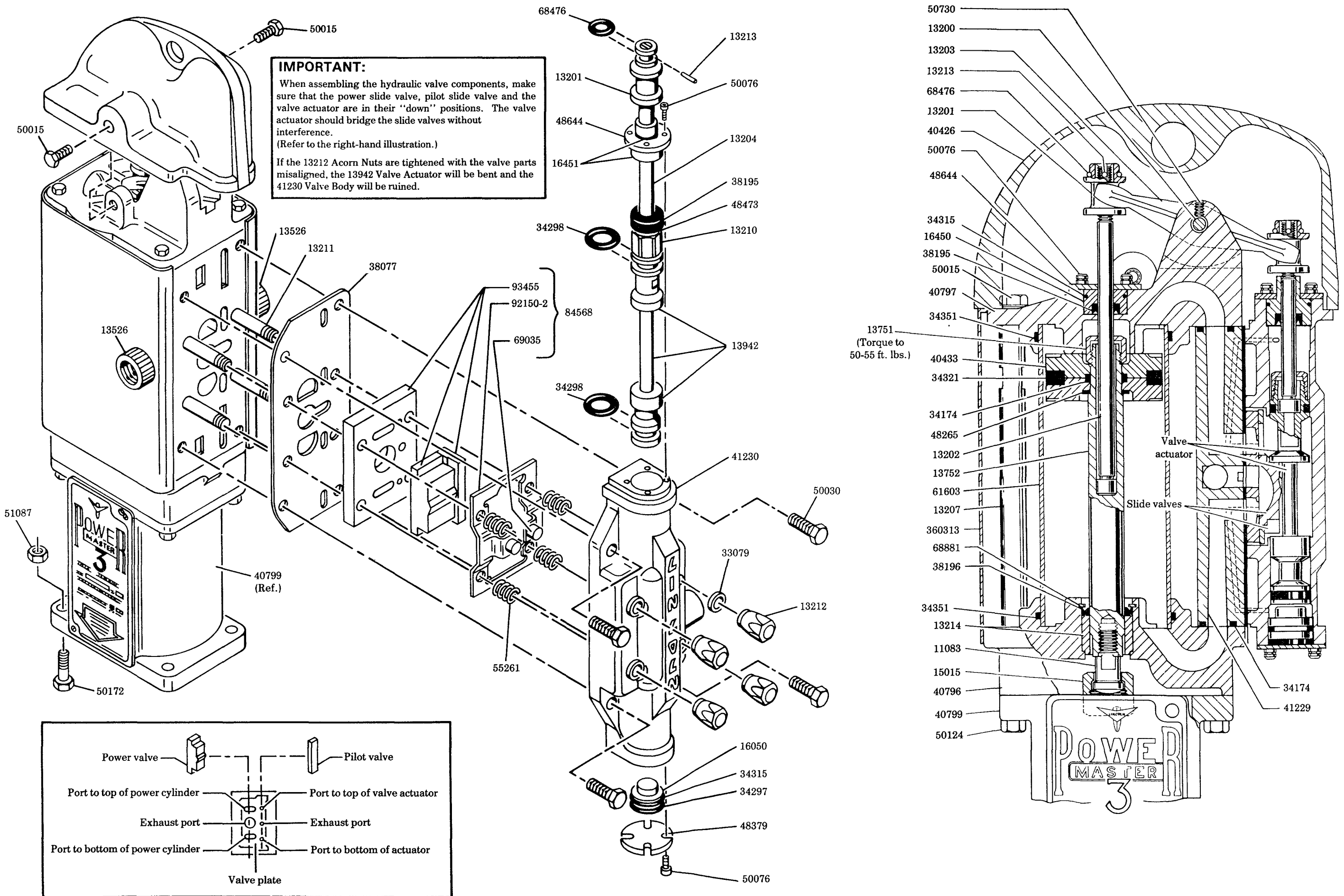
**REFER TO BACK PAGE
FOR PRESSURE/SPEED
LIMITATIONS**



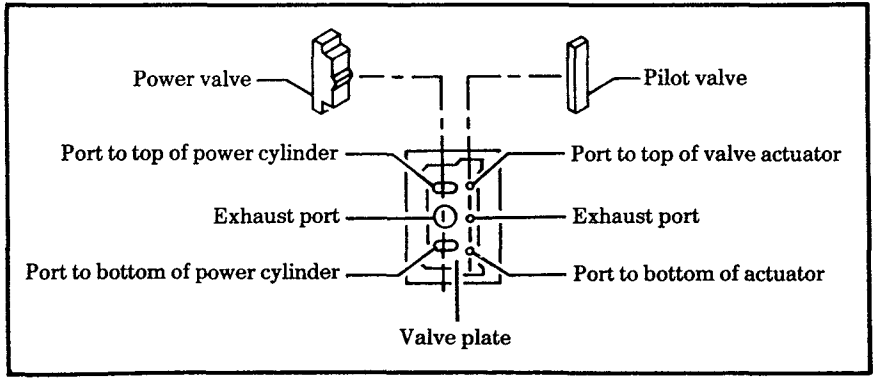
A DIVISION OF
McNEIL CORPORATION

One Lincoln Way
St. Louis, MO 63120-1578
(314) 679-4200

SECTION - A50
PAGE - 57B



IMPORTANT:
 When assembling the hydraulic valve components, make sure that the power slide valve, pilot slide valve and the valve actuator are in their "down" positions. The valve actuator should bridge the slide valves without interference. (Refer to the right-hand illustration.)
 If the 13212 Acorn Nuts are tightened with the valve parts misaligned, the 13942 Valve Actuator will be bent and the 41230 Valve Body will be ruined.



**POWER & PILOT VALVES
 & PORTS IN VALVE PLATE**

13751
 (Torque to
 50-55 ft. lbs.)

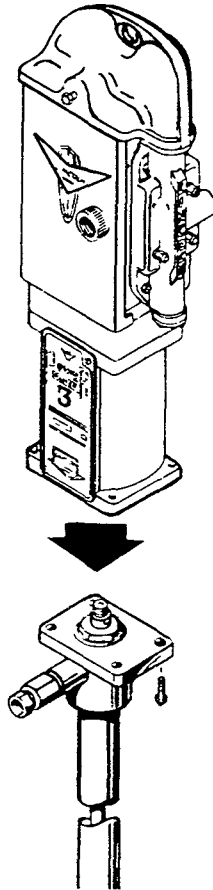
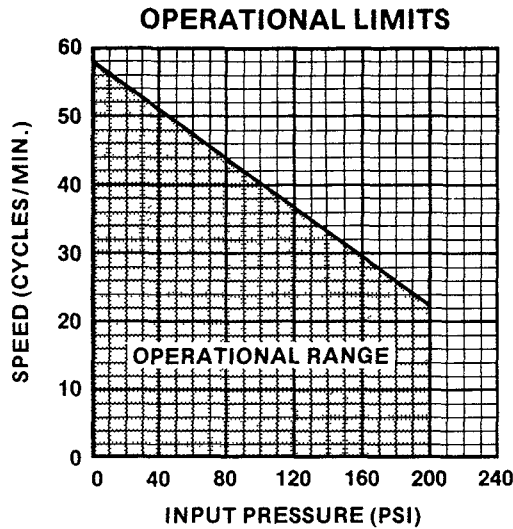
Valve
 actuator

Slide valves

**POWER
 MASTER
 3**

Maximum input pressure at 22 cycles per minute (cpm) is 200 psi.*
 If a higher cycle rate is desired, the input pressure must be reduced according to the following graph to prevent overstressing the hydraulic motor parts.

*Maximum hydraulic input pressure is 100 psi when using 83665 or 84663 Pumputubes.



ATTACHING HYDRAULIC MOTOR TO PUMPTUBE

1. Tightly connect hydraulic motor coupling nut to the pump plunger.
2. Attach hydraulic motor to the pump outlet body flange with the four bolts and nuts (hand tight) supplied with hydraulic motor.
3. Slowly cycle the pump several times, using just enough hydraulic pressure to operate the pump without stalling.
4. Stop the pump on an "up" stroke and tighten the four bolts and nuts to securely fasten the hydraulic motor to the pumputube.

SERVICE PARTS

PART	QUAN.	DESCRIPTION	PART	QUAN.	DESCRIPTION	PART	QUAN.	DESCRIPTION
11083	1	Coupling stud	16451	1	Trip rod guide	48379	1	Washer
13200	1	Pin	33079	4	Gasket	48473	1	Washer
13201	2	Trip rod collar	34174	3	O-ring	48644	2	Retaining washer
13202	1	Trip rod	34297	1	Packing	50015	6	Screw
13203	1	Rocker arm	34298	2	Packing	50030	4	Screw
13204	1	Trip rod	34315	3	O-ring	50076	12	Screw
13207	2	Tie rod	34321	1	D-packing	50124	4	Screw
13210	1	Trip rod stop	34351	2	O-ring	50172	4	Screw
13211	4	Stud	38077	1	Valve gasket	50730	2	Screw
13212	4	Acorn nut	38195	2	V-cup packing	51087	4	Nut
13213	2	Pin	38196	1	U-cup packing	55261	4	Valve seat spring
13214	1	Spacer	40426	1	Cover	61603	1	Air cylinder
13526	2	Adapter	40433	2	Piston	68476	2	Retaining ring
13751	1	Trip rod stop	40796	1	Lower cylinder head	68881	1	Retaining ring
13752	1	Piston rod	40797	1	Upper cylinder head	69035	2	Catch
13942	1	Valve actuator	40799	1	Support casting	84568	1	Valve assembly
15015	1	Coupling nut	41229	1	Support	92150-2	1	Guide plate
16050	1	Spacer	41230	1	Valve body	93455	1	Valves & seat
16450	1	Trip rod guide	48265	1	Washer	360313	1	Cover

RETAIN THIS INFORMATION FOR FUTURE REFERENCE

When ordering replacement parts, list: Part Number, Description, Model Number, and Series Letter.

LINCOLN ST. LOUIS provides a Distributor Network that stocks equipment and replacement parts.
 A list of Authorized Service Departments will be furnished upon request.