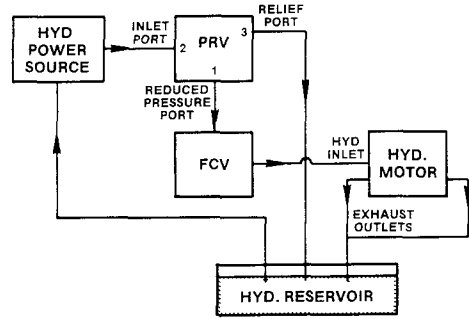
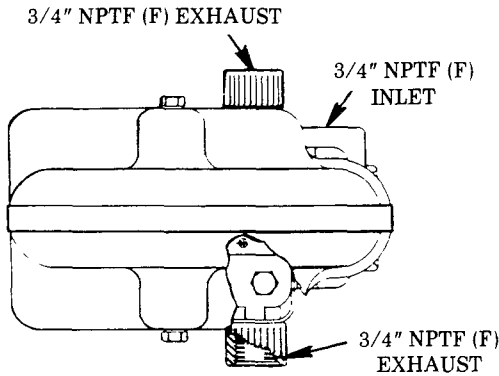


200 PSI MAX. HYDRAULIC INPUT PRESSURE

IMPORTANT
MAXIMUM HYDRAULIC OIL TEMPERATURE: 150° F.
(If higher temperature is required, contact factory.)

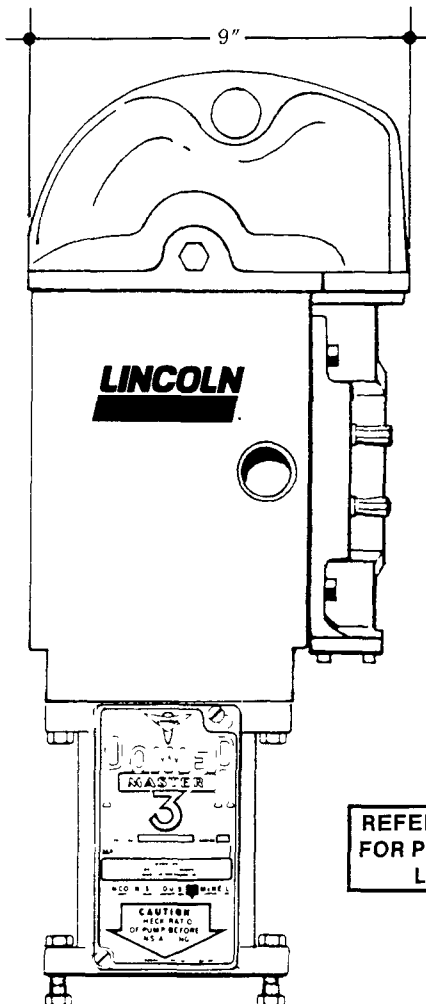
5



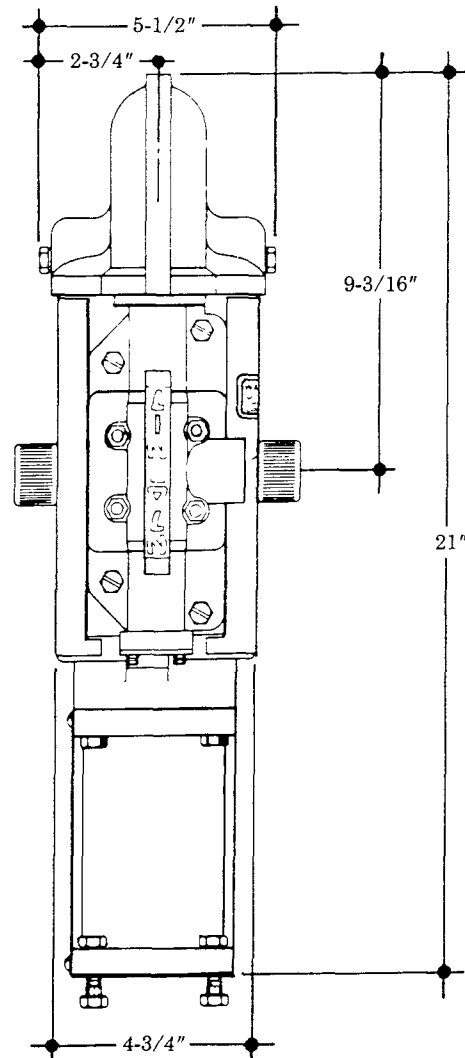
WARNING

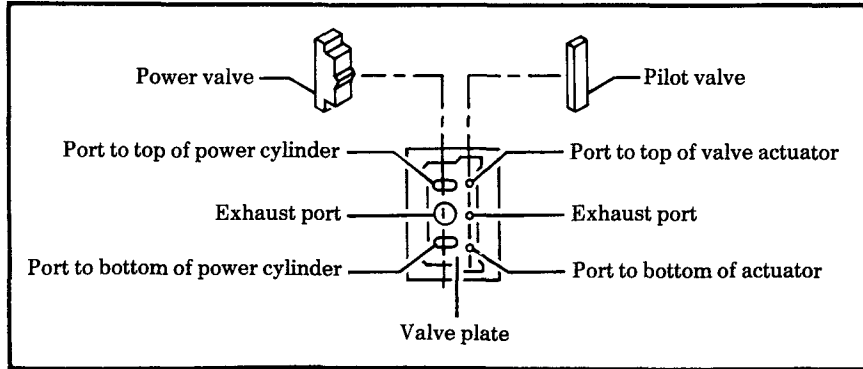
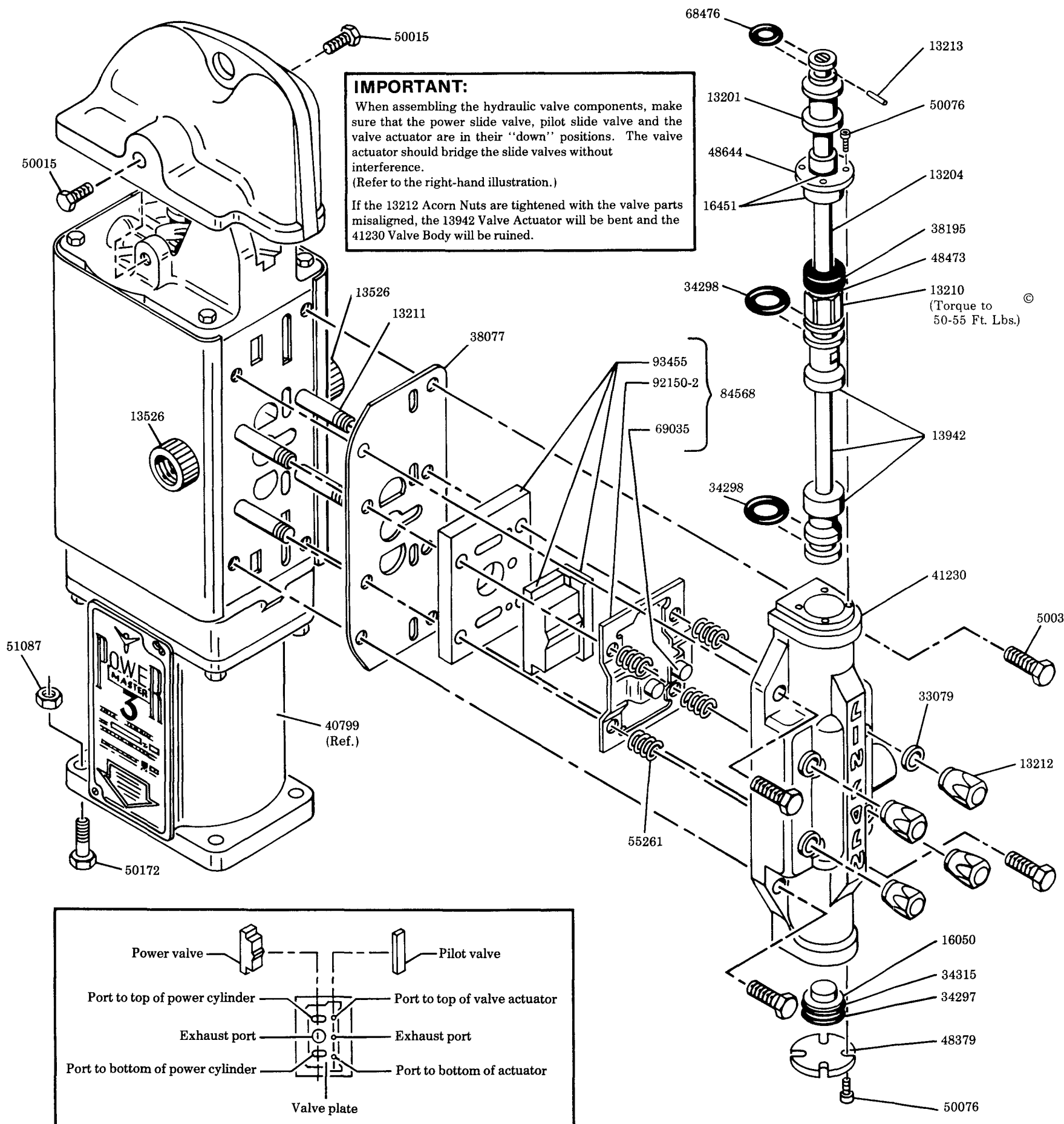
To prevent overstressing of pumptube, system must be installed using a Pressure Reducing Valve (PRV) and a Flow Control Valve (FCV) as shown. Relief port on PRV must be connected to hydraulic reservoir by a separate line. Any pressure increase in this line will be accumulative at the reduced pressure port (inlet line to FCV).

5108

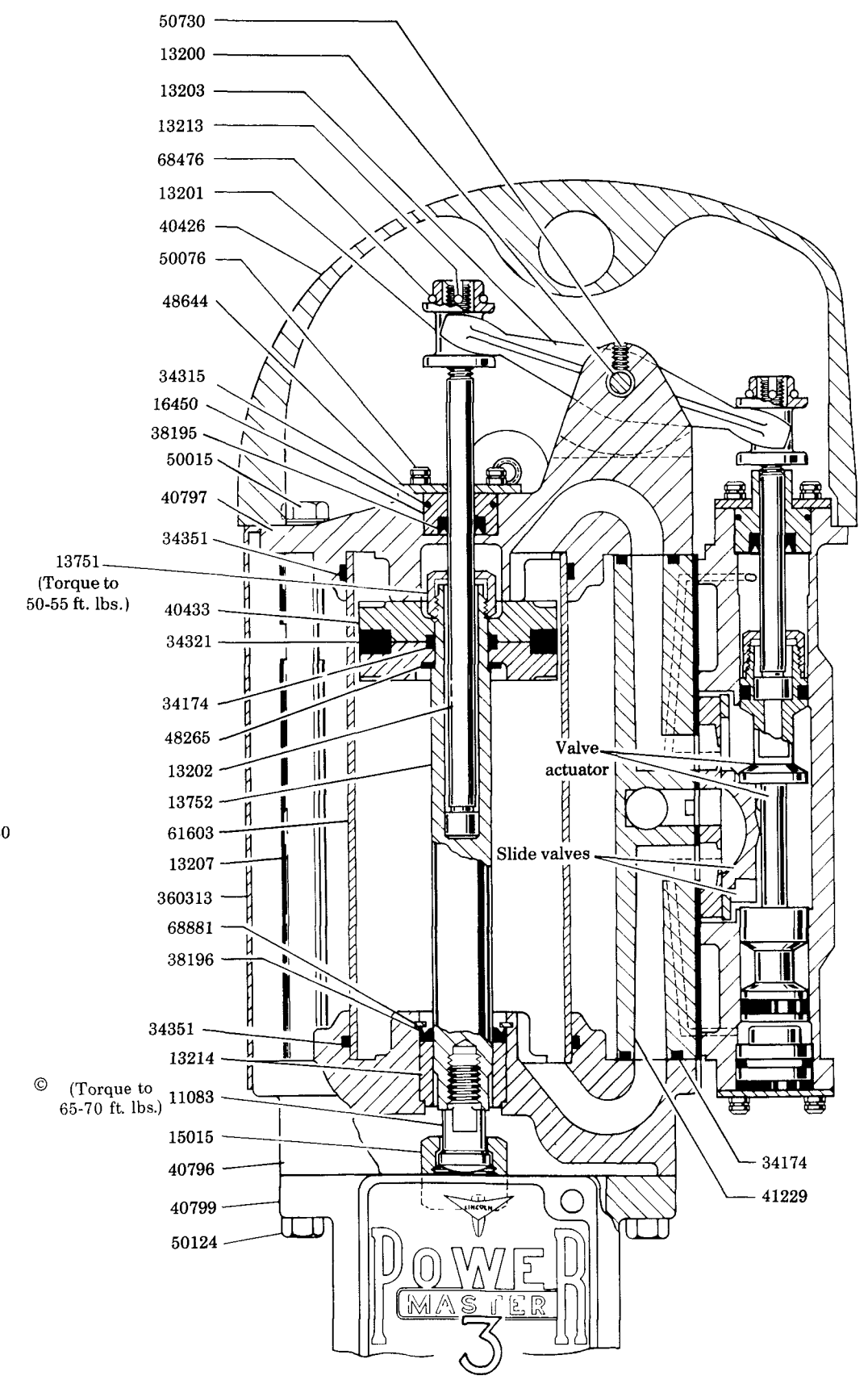


REFER TO BACK PAGE
FOR PRESSURE/SPEED
LIMITATIONS





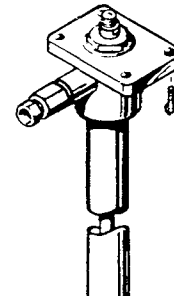
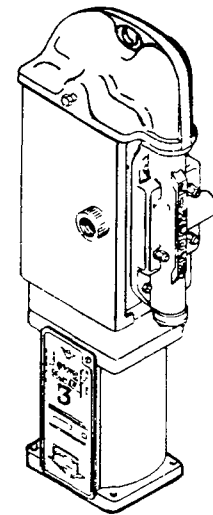
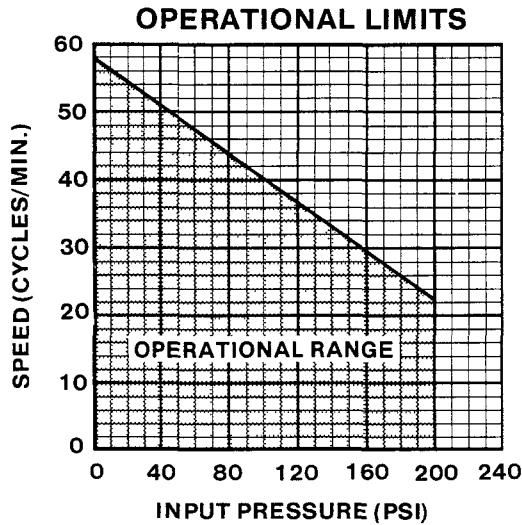
**POWER & PILOT VALVES
 & PORTS IN VALVE PLATE**



© Indicates Change

Maximum input pressure at 22 cycles per minute (cpm) is 200 psi.*
 If a higher cycle rate is desired, the input pressure must be reduced according to the following graph to prevent overstressing the hydraulic motor parts.

*Maximum hydraulic input pressure is 100 psi when using 83665 or 84663 Pumtubes.



ATTACHING HYDRAULIC MOTOR TO PUMPTUBE

1. Tightly connect hydraulic motor coupling nut to the pump plunger.
2. Attach hydraulic motor to the pump outlet body flange with the four bolts and nuts (hand tight) supplied with hydraulic motor.
3. Slowly cycle the pump several times, using just enough hydraulic pressure to operate the pump without stalling.
4. Stop the pump on an "up" stroke and tighten the four bolts and nuts to securely fasten the hydraulic motor to the pumptube.

SERVICE PARTS

Part	QUAN.	Description	Part	Qty.	Description	Part	Qty.	Description
11083	1	Coupling stud	16451	1	Trip rod guide	48379	1	Washer
13200	1	Pin	33079	4	Gasket	48473	1	Washer
13201	2	Trip rod collar	34174	3	O-ring	48644	2	Retaining washer
13202	1	Trip rod	34297	1	Packing	50015	6	Screw
13203	1	Rocker arm	34298	2	Packing	50030	4	Screw
13204	1	Trip rod	34315	3	O-ring	50076	12	Screw
13207	2	Tie rod	34321	1	D-packing	50124	4	Screw
13210	1	Trip rod stop	34351	2	O-ring	50172	4	Screw
13211	4	Stud	38077	1	Valve gasket	50730	2	Screw
13212	4	Acorn nut	38195	2	V-cup packing	51087	4	Nut
13213	2	Pin	38196	1	U-cup packing	55261	4	Valve seat spring
13214	1	Spacer	40426	1	Cover	61603	1	Air cylinder
13526	2	Adapter	40433	2	Piston	68476	2	Retaining ring
13751	1	Trip rod stop	40796	1	Lower cylinder head	68881	1	Retaining ring
13752	1	Piston rod	40797	1	Upper cylinder head	69035	2	Catch
13942	1	Valve actuator	40799	1	Support casting	84568	1	Valve assembly
15015	1	Coupling nut	41229	1	Support	92150-2	1	Guide plate
16050	1	Spacer	41230	1	Valve body	93455	1	Valves & seat
16450	1	Trip rod guide	48265	1	Washer	360313	1	Cover

RETAIN THIS INFORMATION FOR FUTURE REFERENCE

When ordering replacement parts, list: Part Number, Description, Model Number, and Series Letter.

LINCOLN provides a Distributor Network that stocks equipment and replacement parts.