

OWNERS MANUAL

IT IS THE RESPONSIBILITY OF THE OWNER AND/OR OPERATOR TO PROPERLY USE AND MAINTAIN THIS EQUIPMENT. CAREFULLY READ AND UNDERSTAND THE INSTRUCTIONS AND WARNINGS IN THIS MANUAL BEFORE OPERATING THIS EQUIPMENT.

If the operator is not fluent in English, the instructions and warnings shall be read and discussed in the operator's native language, making sure the operator comprehends the contents.

This equipment complies with OSHA Standards where applicable.

WARNING

DO NOT exceed the stated maximum working pressure of the airmotor or of the lowest rated component in your system.

DO NOT alter or modify any part of this equipment.

DO NOT operate this equipment with combustible gas.

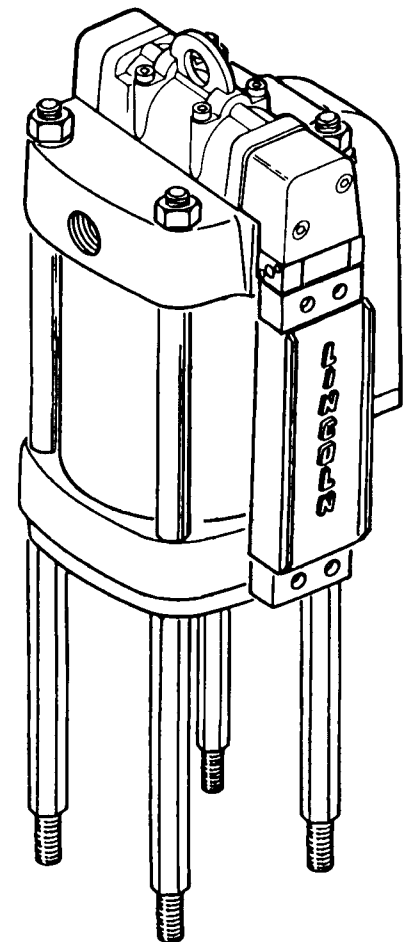
DO NOT attempt to repair or disassemble the equipment while the system is pressurized.

TIGHTEN all fluid connections securely before using this equipment.

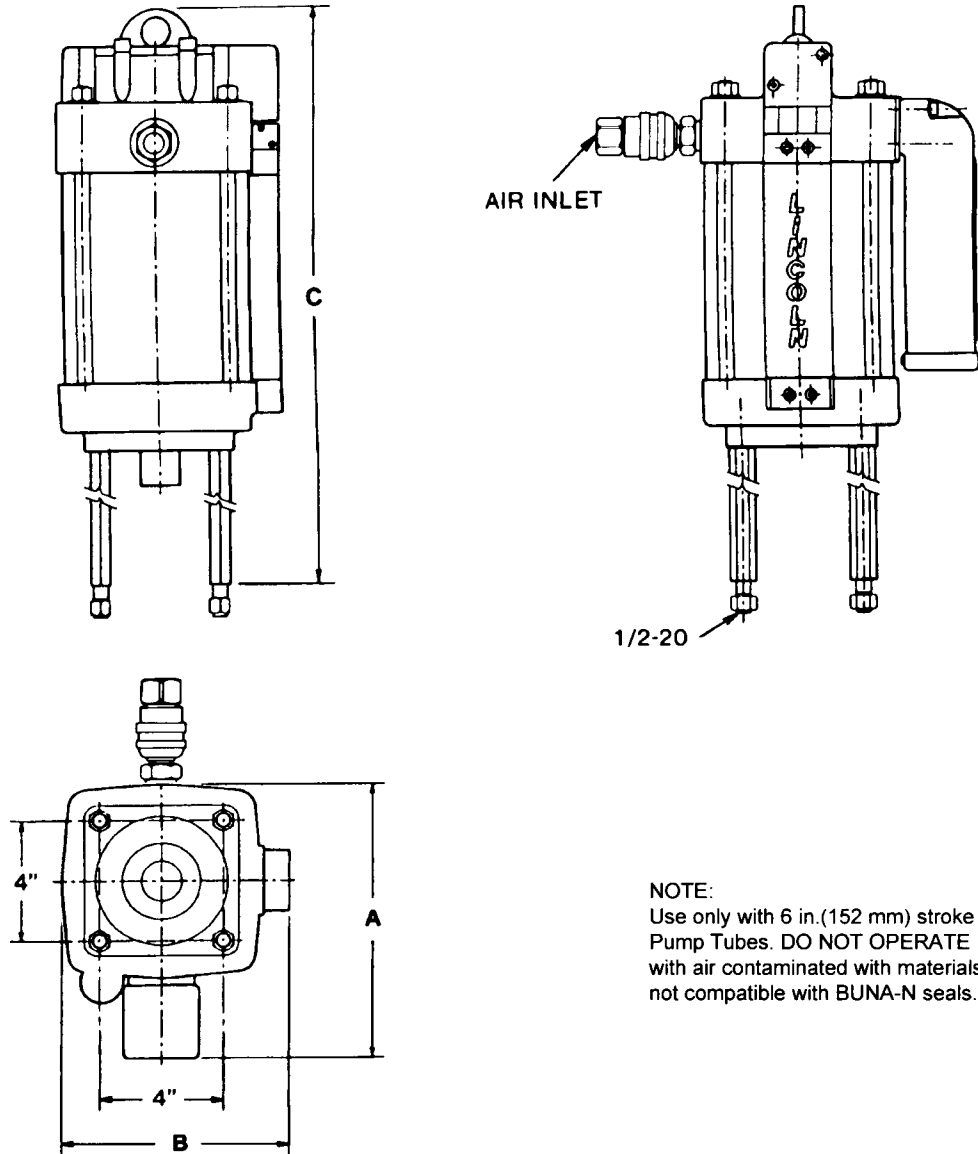
ALWAYS read and follow the fluid manufacturer's recommendations regarding fluid compatibility, and the use of protective clothing and equipment.

CHECK all equipment regularly and repair or replace worn or damaged parts immediately.

IMPORTANT: Failure to heed these warnings including misuse, overpressurizing, modifying parts, using incompatible chemicals and fluids, or using worn or damaged parts, may result in equipment damage and/or serious personal injury, fire, explosion, or property damage.



This manual contains **IMPORTANT WARNINGS** and **INSTRUCTIONS**. READ AND RETAIN FOR REFERENCE.



NOTE:
 Use only with 6 in.(152 mm) stroke
 Pump Tubes. DO NOT OPERATE
 with air contaminated with materials
 not compatible with BUNA-N seals.

SPECIFICATIONS

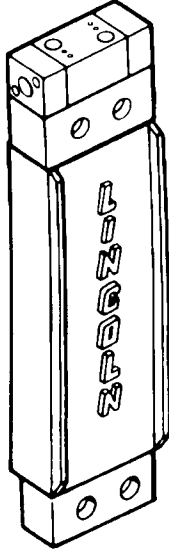
MODEL	CYLINDER DIAMETER IN. (MM)	EFFECTIVE PISTON AREA IN ² (CM ²)	OPERATING PRESSURE RANGE PSIG (BAR)	OPERATING TEMP. RANGE °C (°F)	MIN. I.D. OF AIR SUPPLY IN. (MM)	AIR INLET	AIR CONS. @ 100 PSIG (7 BAR) SCF/CYCLE (L(N)/CYCLE)
86810	10 (254)	78 (506)	30-100 (2-7)		3/4 (20)	3/4" NPTF	3.6 (103)
84808	8 (203)	50 (324)	30-100 (2-7)	-30 - +200	3/4 (20)	3/4" NPTF	2.6 (75)
84806	6 (152)	28 (182)	30-100 (2-7)	(-34 - +93)	1/2 (12)	3/4" NPTF	1.6 (46)
84804	4 1/4 (108)	14 (92)	30-200 (2-14)		1/2 (12)	1/2" NPTF	1.1 (32)
84803	3 (76)	7 (46)	30-200 (2-14)		3/8 (10)	1/2" NPTF	0.7 (20)
MODEL	MAX. RECOM. SPEED CPM	STROKE LENGTH IN. (MM)	WEIGHT LB. (KG)	SEALS MATERIAL	DIM. A IN. (MM)	DIM. B IN. (MM)	DIM. C IN. (MM)
86810			62 (28.1)		13-1/4 (337)	11-5/8 (295)	22-3/4 (577)
84808			47 (21.2)	BUNA-N	11-1/4 (286)	9-9/16 (243)	22-3/4 (577)
84806	75	6 (152)	34 (15.5)	and	9-1/4 (235)	7-3/4 (197)	22-3/4 (577)
84804			26 (11.7)	*TEFLON	7-1/2 (191)	6 (152)	23-5/8 (599)
84803			25 (11.3)		7-1/2 (191)	6 (152)	23-5/8 (599)

*TEFLON® Seals used with Power Valve Spool (Item 13) and Relay Valve (Item 17).

SERVICE ASSEMBLIES & KITS

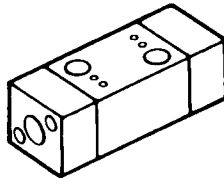
To reduce down-time and take advantage of the modular design of the airmotor, Lincoln recommends using the following Service Assemblies for repair of the airmotor. After removal, the faulty assembly can then be repaired using the corresponding Soft Parts Kit.

1. Pilot Bar Subassembly
P/N 242786 (4-1/4", 6", 8" & 10" Airmotor)
P/N 242799 (3" Airmotor)

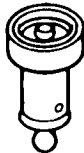


2. Soft Parts Kit P/N 84967 for repair of Pilot Bar Subassemblies listed above. (Includes all necessary "O"-rings.)

3. Relay Valve. P/N 242787

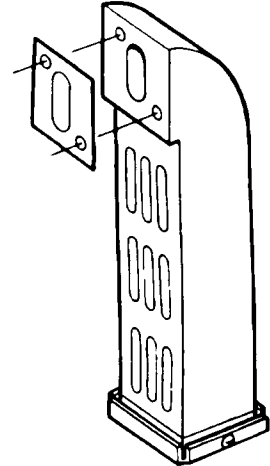


4. Air Signal Valve P/N 241768



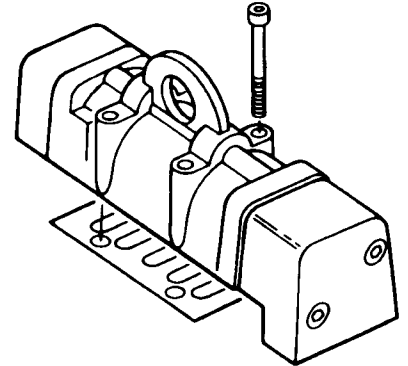
5. Cylinder Tube Soft Parts Kit
(Includes all "O"-rings, piston seal, etc.)
P/N 84789 (10" Airmotor)
P/N 84791 (8" Airmotor)
P/N 84792 (6" Airmotor)
P/N 84793 (4-1/4" Airmotor)
P/N 84794 (3" Airmotor)

6. Muffler with Gasket P/N 242788



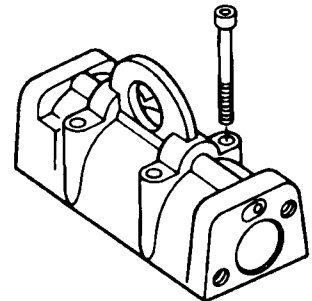
7. Muffler Element Kit P/N 84939 for repair of Muffler listed above. (Includes element, felts and gasket.)

8. Power Valve Subassembly
P/N 244800 (10" Airmotor)
P/N 244804 (8" Airmotor)
P/N 244806 (6" Airmotor)
P/N 244808 (3" & 4-1/4" Airmotor)



9. Soft Parts Kit P/N 84968 for repair of Power Valve Subassemblies listed above.

10. Power Valve Spool & Body P/N 244802



IMPORTANT: When replacing soft parts, replace all parts included in the soft parts kit.



WARNING

ALWAYS check equipment for proper operation before each use, making sure safety devices are in place and operating properly. DO NOT alter or modify any part of the equipment as this may cause a malfunction and result in serious bodily injury.

NOTE: Whenever flammable materials are pumped, ground Airmotor according to Local Codes.

OPERATING PRECAUTIONS

Use Lincoln replacement parts to assure compatible pressure rating.

Heed ALL warnings.

DO NOT OPERATE Airmotor in excess of recommended pressure range.

Disconnect air line and relieve (vent) pressure when Airmotor sits idle for long periods of time and before servicing.



WARNING

ALWAYS read and follow the fluid and solvent manufacturer's recommendations regarding the use of protective clothing and equipment.



WARNING

To reduce the risk of serious bodily injury or property damage. NEVER exceed the maximum air or fluid working pressure of the lowest rated system component.

BEFORE CONNECTING AIRMOTOR TO AIR LINE

LINCOLN SERIES III AIRMOTORS are fully pneumatic and require a minimum specified size of air supply hose for proper operation. Check specification for minimum ID. of the air supply hose and select corresponding sizes of air controls and accessories for non-restrictive air flow. Lincoln filter, regulator with gauge and lubricators are available as combination units (FRL).

For 3/8" air line - Model 85387-6
For 1/2" air line - Model 85387-8
For 3/4" air line - Model 85387-12

If quick disconnect coupling should be used, install supplied coupler to insure proper airmotor operation.

ATTACHING AIRMOTOR TO PUMPTUBE

1. Tightly attach the tie rods (Item 41) to the Airmotor lower casting. Use short threaded end of tie rods.
2. Mount Airmotor on top of pump tube outlet and tightly connect pump tube coupling nut to Airmotor Piston Rod (Item 5).
3. Hand tighten tie rods to the pump tube with four nuts (Item 42) supplied with Airmotor.
4. Connect air supply and slowly cycle pump several times using only enough air pressure to operate pump without stalling.
5. STOP pump on "UP" stroke and tighten four nuts to securely fasten Airmotor to pump tube.

SERVICE AND DISASSEMBLY PROCEDURE



WARNING

Always disconnect air supply to Airmotor and relieve pressure before checking, servicing, or repairing any part of Airmotor.

TOOLS REQUIRED

1. 7/64 (.109) Hex Wrench
2. 5/32 (.156) Hex Wrench
3. 3/16 (.189) Hex Wrench
4. 3/4 (.750) Open End Wrench (for 6" Airmotor)
5. 15/16" (.937) Open End Wrench (for 8" Airmotor)
6. 1/2" (.500) Open End Wrench (for 4-1/4" and 3" Airmotor)
7. 1-1/8" (1.125) Open End Wrench (for 10" Airmotor)
8. Pliers

The modular design of the Airmotor and accessibility of vital operation parts make service available without taking Airmotor out of line or without complete disassembly.

Power Valve

1. Remove four screws (Items 27 & 34) with 3/16" hex wrench (2 on each side).
2. Remove End Caps (Items 10 & 14).
3. Push out Valve Spool (Item 13).

4. Remove Spool Bumpers (Item 9) (One from each end).
5. Remove "O" Ring (Item 11) (One from each end of valve body).
6. Remove four Screws (Item 37) with 3/16" hex wrench and lift valve body (Item 12).
7. Remove Gasket (Item 15) to complete valve disassembly.
8. To REASSEMBLE, REVERSE procedure.

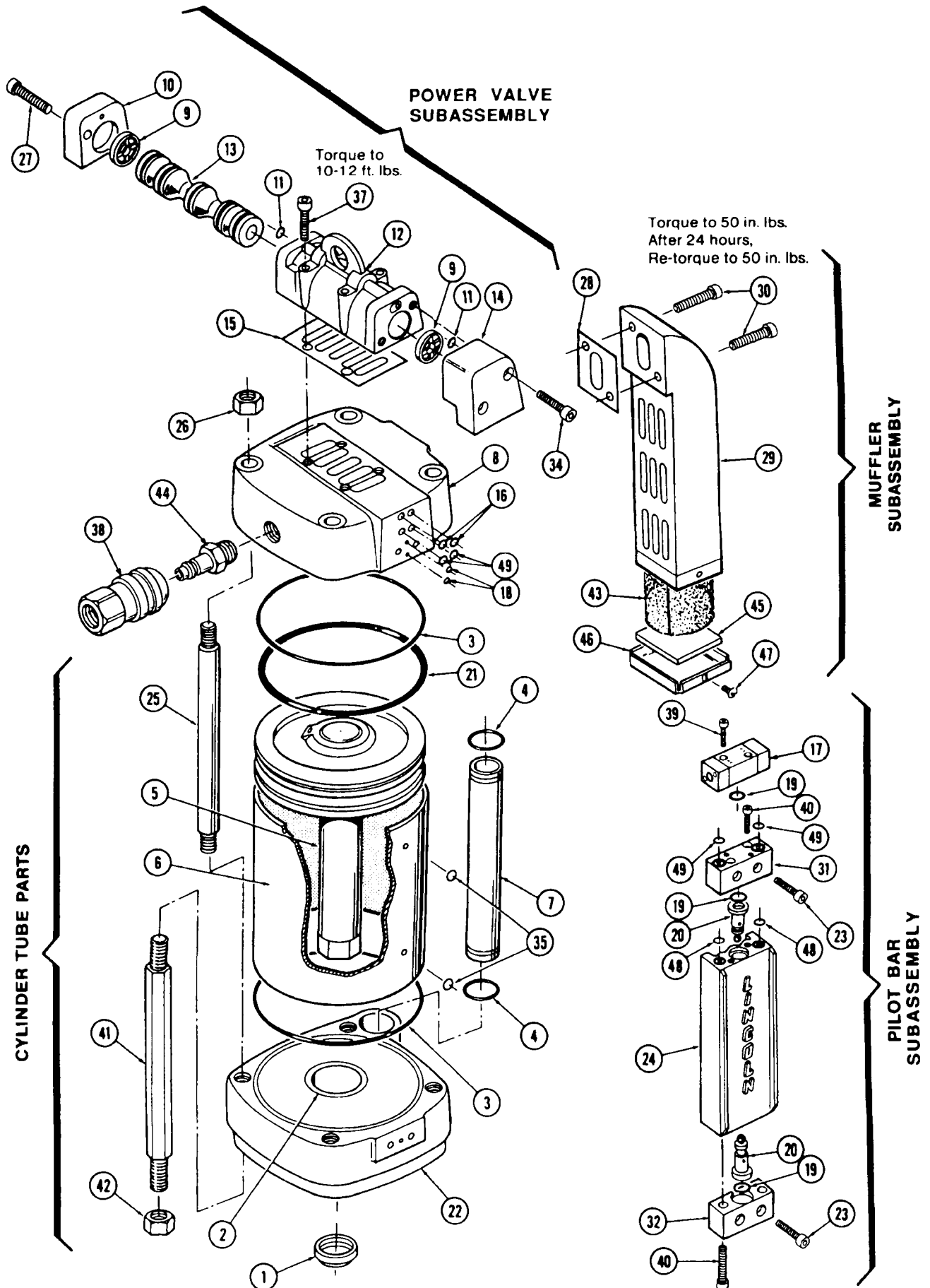
Pilot Bar Subassembly

1. Remove four Screws (Item 23) (two on each end) with 3/16" hex wrench and pull out Pilot Bar Subassembly.
2. Remove two Screws (Item 39), with 7/64" hex wrench and lift out Valve Body (Item 17).
3. Remove four Screws (Item 40) (two on each side of Pilot Bar) and lift off Upper Bracket (Item 31) and Lower Bracket (Item 32).
4. Remove Air Signal Valves (Item 20).
5. To REASSEMBLE, REVERSE procedure.

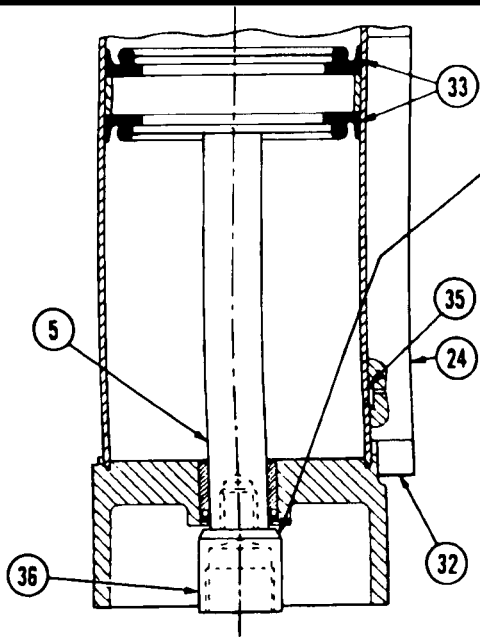
Cylinder Tube and Muffler

1. Remove Air Brakes Subassembly (See previous instructions).
2. Remove two Screws (Item 30) with 3/16" hex wrench and pull off Muffler (Item 29).
3. Remove Gasket (Items 28).
4. Remove four Nuts (Item 26) with open end wrench.
5. Lift upward and remove Upper Casting (Item 8).
6. Remove four Tie Rods (Item 25).
7. Remove Air Tube (Item 7).
8. Lift upward and remove Cylinder Tube (Item 6).
9. Remove Piston and Piston Rod (Item 5).
10. Remove four Connecting Rods (Item 41) with open end wrench.
11. To REASSEMBLE, REVERSE procedure.

NOTE: Align two holes on the the Cylinder Tube (Item 6) with two holes on the Pilot Bar (Item 24) before tightening Tie Rods (Item 25) so that proper seal with "O-rings is achieved.

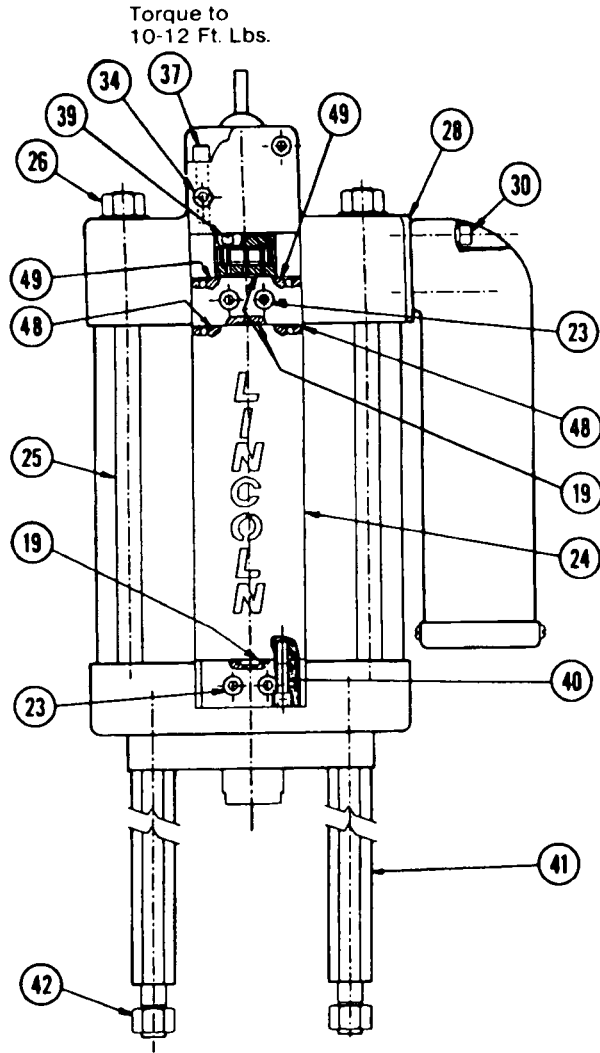


NOTE: Refer to Page 3 for Service Assemblies & Kits

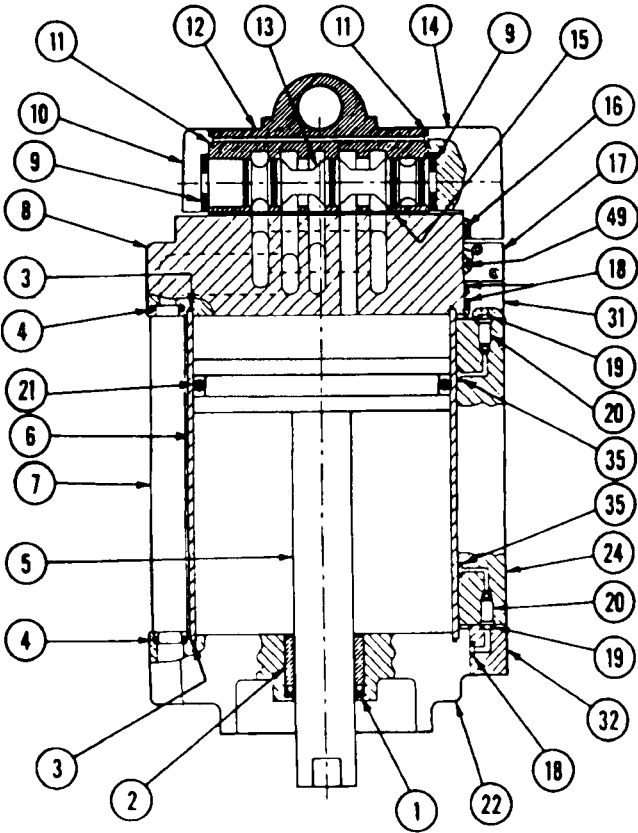


Assemble Adapter to Piston Rod
Using Loctite #242 Blue on threads.
Torque to 60-65 Ft. Lbs.

MODELS 84803 and 84804



Torque to
10-12 Ft. Lbs.



MODELS 84806, 84808, & 86810

PARTS LIST

Item No.	Description	Qty.	Model 86810 (10" Dia.)	Model 84808 (8" Dia.)	Model 84806 (6" Dia.)	Model 84804 (4 1/4" Dia)	Model 84803 (3" Dia.)
1	"U" Cup (Buna-N)	1	(Note #8)	(Note #1)	(Note #2)	(Note #3)	(Note #4)
2	Rod Bearing	1	247296	241732	241732	241733	241733
3	Seal, Cylinder (Buna-N)	2	(Note #8)	(Note #1)	(Note #2)	(Note #3)	(Note #4)
4	"O"-ring (Buna-N)	2	(Note #8)	(Note #1)	(Note #2)	(Note #3)	(Note #4)
5	Piston Rod Assembly	1	247449	241470	241741	241742	241743
6	Cylinder Tube	1	247448	241744	241745	241746	241747
7	Air Tube	1	247336	241748	241748	241749	241749
8	Upper Casting	1	247304	241750	241751	241752	241753
9	Bumper, Valve	2	(Note #7)	(Note #7)	(Note #7)	(Note #7)	(Note #7)
10	Cap, Valve	1	241755	241755	241755	241755	241755
11	"O"-ring (Buna-N)	2	(Note #7)	(Note #7)	(Note #7)	(Note #7)	(Note #7)
12	Body, Valve	1	(Note #9)	(Note #9)	(Note #9)	(Note #9)	(Note #9)
13	Spool, Valve	1	(Note #9)	(Note #9)	(Note #9)	(Note #9)	(Note #9)
14	Cap, Valve	1	247302	241759	241760	241761	241761
15	Gasket	1	(Note #7)	(Note #7)	(Note #7)	(Note #7)	(Note #7)
16	"O"-ring (Buna-N)	2	(Note #7)	(Note #7)	(Note #7)	(Note #7)	(Note #7)
17	Relay Valve	1	242787	242787	242787	242787	242787
18	"O"-ring (Buna-N)	3	(Note #6)	(Note #6)	(Note #6)	(Note #6)	(Note #6)
19	"O"-ring (Buna-N)	3	(Note #6)	(Note #6)	(Note #6)	(Note #6)	(Note #6)
20	Air Signal Valve	2	241768	241768	241768	241768	241768
21	"O"-ring Piston(Buna-N)	1	(Note #8)	(Note #1)	(Note #2)	----	----
22	Lower Casting	1	247303	241773	241774	241775	241776
23	Screw (1/4-20 x 7/8")	4	50526	50526	50526	50526	50526
24	Pilot Bar	1	241778	241778	241778	241778	241778
25	Tie Rod	4	247295	241766	241779	241767	241767
26	Nut	4	247298	51018	51007	51001	51001
27	Screw	2	244995	244995	244995	244995	244995
28	Gasket	1	(Note #5)	(Note #5)	(Note #5)	(Note #5)	(Note #5)
29	Muffler Body	1	241021	241021	241021	241021	241021
30	Screw (1/4-20 x 1 1/2")	2	50051	50051	50051	50051	50051
31	Bracket, Upper	1	241784	241784	241784	241784	241784
32	Bracket, Lower	1	241785	241785	241785	241785	241785
33	Seal, Piston	2	----	----	----	(Note #3)	(Note #4)
34	Screw	2	247299	244993	241783	244994	244994
35	"O"-ring (Buna-N)	2	(Note #6)	(Note #6)	(Note #6)	(Note #6)	(Note #6)
36	Adapter	1	----	----	----	241789	241789
37	Screw (1/4-20 x 2 1/4")	4	244975	244975	244975	244975	244975
38	Coupler	1	662012	655012	655012	655008	655008
39	Screw (6-32)	2	50816	50816	50816	50816	50816
40	Screw (1/4-20)	4	50823	50823	50823	50823	50823
41	Tie Rod	4	241023	241023	241023	241023	241023
42	Nut (1/2-20)	4	236023	236023	236023	236023	236023
43	Muffler Element	1	(Note #5)	(Note #5)	(Note #5)	(Note #5)	(Note #5)
44	Nipple	1	660112	653112	653112	653112	653112
45	End Element	1	(Note #5)	(Note #5)	(Note #5)	(Note #5)	(Note #5)
46	Muffler Plate	1	241027	241027	241027	241027	241027
47	Screw, Self Tapping (10-32)	2	66962	66962	66962	66962	66962
48	"O"-ring (Buna-N)	2	(Note #6)	(Note #6)	(Note #6)	(Note #6)	(Note #6)
49	"O"-ring (Buna-N)	4	(Note #6)	(Note #6)	(Note #6)	(Note #6)	(Note #6)

- NOTES:**
1. Included in 84791 Cylinder Tube Soft Parts Kit for Model 84808 (8" Airmotor).
 2. Included in 84792 Cylinder Tube Soft Parts Kit for Model 84806 (6" Airmotor).
 3. Included in 84793 Cylinder Tube Soft Parts Kit for Model 84804 (4-1/4" Airmotor).
 4. Included in 84794 Cylinder Tube Soft Parts Kit for Model 84803 (3" Airmotor).
 5. Included in 84939 Muffler Element Kit.
 6. Included in 84967 Soft Parts Kit for Pilot Bar Subassembly.
 7. Included in 84968 Soft Parts Kit for Power Valve Subassembly.
 8. Included in 84789 Cylinder Tube Soft Parts Kit for Model 86810 (10" Airmotor).
 9. Included in 244802 Power Valve Spool & Body.

TROUBLESHOOTING

PROBLEM	POSSIBLE CAUSE	SOLUTION
Airmotor is not working and air is coming from exhaust.	Restricted or inadequate air supply.	Check air supply and adjust to minimum recommended level. Check air supply hose diameter and change it to minimum recommended size (see specifications). Check size of FRL and Quick disconnect coupling. Replace if small size or restricted.
Erratic or accelerated operation with short stroking.	Dirty or damaged Relay Valve (Item 17) or Air Signal Valve (Item 20).	Check valves and clean if necessary. Replace any damaged seals or worn parts.

LINCOLN LUBRICATING EQUIPMENT LIMITED WARRANTY

Lincoln, A Pentair Company, warrants that lubrication equipment, materials dispensing equipment and other related equipment manufactured by it will be free from defects in material and workmanship during the one (1) year following the date of purchase. If equipment proves to be defective during this warranty period, it will be repaired or replaced without charge, provided that factory examination indicates the equipment to be defective. To obtain repair or replacement, it must be shipped, transportation charges prepaid, with proof of date of purchase to a Lincoln authorized Warranty and Service Center, within the one (1) year following the date of purchase.

This warranty is extended to the original retail purchaser only. This warranty does not apply to equipment damaged from accident, overload, abuse, misuse, negligence, faulty installation or abrasive or corrosive materials, or to equipment repaired or altered by anyone not authorized by Lincoln to repair or alter the equipment. This warranty applies only to equipment installed and operated according to the recommendations of Lincoln or its authorized field personnel. No other express warranty applies to lubrication equipment, materials dispensing equipment, and other related equipment manufactured by Lincoln.

ANY IMPLIED WARRANTIES applicable to lubrication equipment, materials dispensing equipment, and other related equipment manufactured by Lincoln INCLUDING THE WARRANTIES OF MERCHANTABILITY AND FITNESS FOR A PARTICULAR PURPOSE, WILL LAST ONLY FOR ONE (1) YEAR FROM THE DATE OF PURCHASE. SOME STATES DO NOT ALLOW LIMITATIONS ON HOW LONG AN IMPLIED WARRANTY LASTS, SO THE ABOVE LIMITATION MAY NOT APPLY TO YOU.

In no event shall Lincoln be liable for incidental or consequential damages. The liability of Lincoln on any claim for loss or damage arising out of the sale, resale, or use of lubrication equipment, materials dispensing equipment, and other related equipment shall in no event exceed the purchase price. SOME STATES DO NOT ALLOW THE EXCLUSION OR LIMITATION OF INCIDENTAL OR CONSEQUENTIAL DAMAGES, SO THE ABOVE LIMITATION OR EXCLUSION MAY NOT APPLY TO YOU.

THIS WARRANTY GIVES YOU SPECIFIC LEGAL RIGHTS AND YOU MAY ALSO HAVE OTHER RIGHTS WHICH VARY FROM STATE TO STATE.

RETAIN THIS INFORMATION FOR FUTURE REFERENCE

When ordering replacement parts, list: Part Number, Description, Model Number and Series Letter.
LINCOLN provides a Distributor Network that stocks equipment and replacement parts.