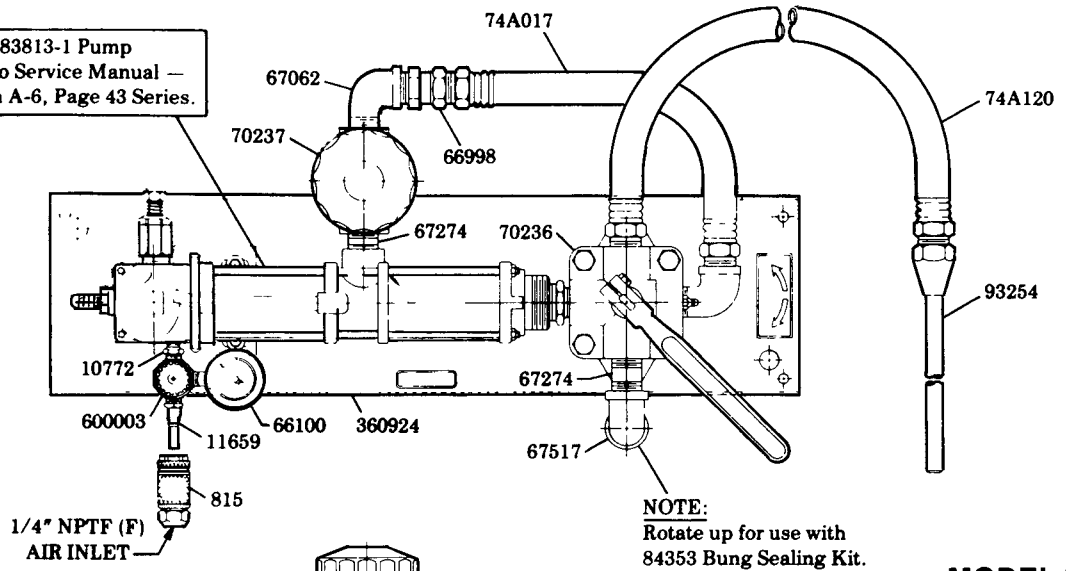
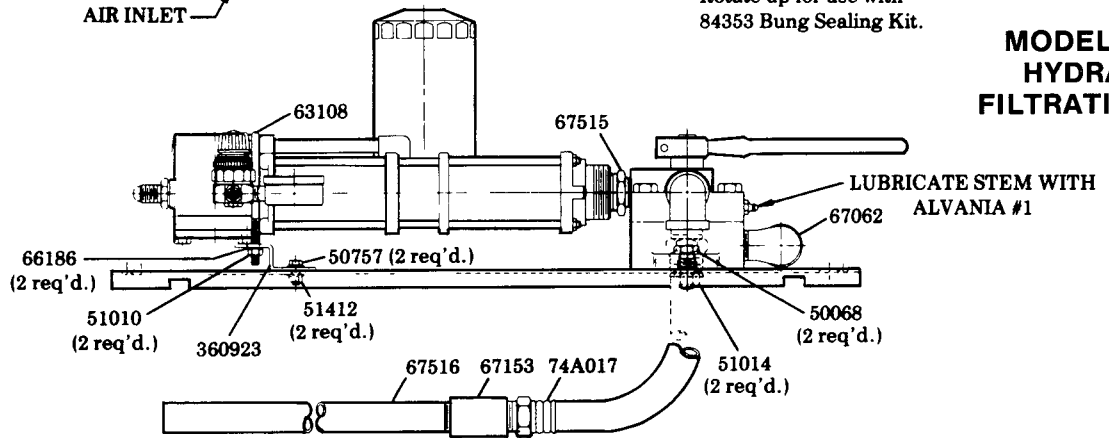


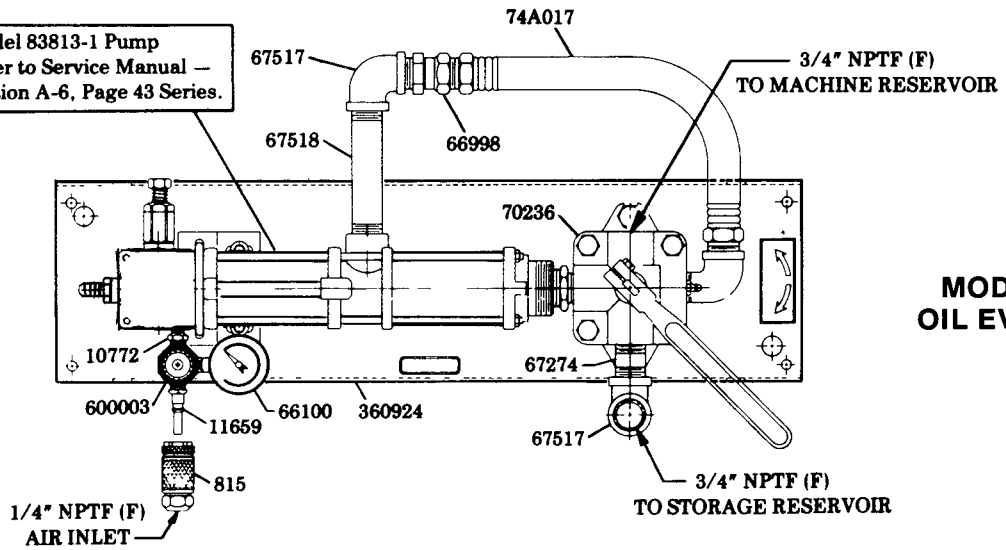
Model 83813-1 Pump  
Refer to Service Manual —  
Section A-6, Page 43 Series.



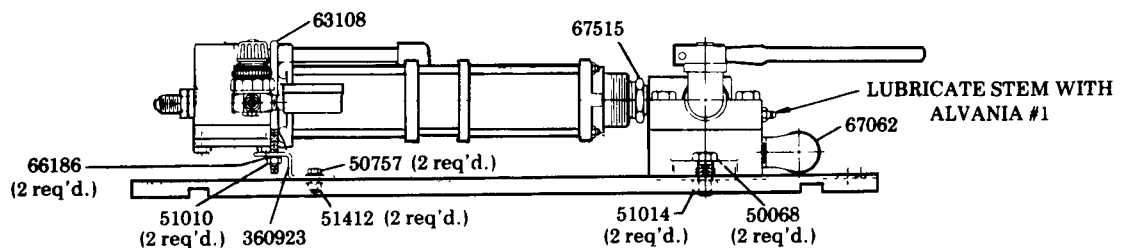
**MODEL 84351  
HYDRAULIC  
FILTRATION UNIT**



Model 83813-1 Pump  
Refer to Service Manual —  
Section A-6, Page 43 Series.



**MODEL 84352  
OIL EVACUATION  
UNIT**



## SPECIFICATIONS

Pump Ratio: 1:1  
 Air Inlet: 1/4" NPTF (F)  
 Maximum Operating Pressure: 100 psi  
 Lubricant Output: 4.5 GPM of SAE 30 oil @ 70° F with 60 psi air pressure  
 Filter: Model 84351 - 10 micron nominal / no relief valve  
 Model 84352 - none

## INSTALLATION

The mounting plate is notched to fit over the chime of a fifty-five gallon drum to retain the oil evacuator for portable use. For lube truck installations, the mounting plate is drilled for mounting to a flat surface with four 5/16" bolts, or to accept an 83131 Tie Rod Assembly.

Install the hydraulic filtration unit on a fifty-five gallon drum by grasping the unit from the filter side and tipping it upward 90° so that the filter is horizontal (See Fig. 1). This maneuver bends the suction hose and raises the suction pipe, making it easier to insert into the bung opening. Position the mounting plate on the drum so that the retaining notches fit over the drum chime and the suction hose is centered in the bung opening.

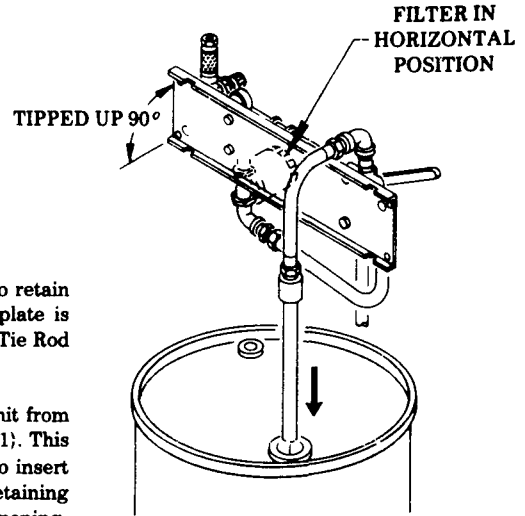


Fig. 1

## OPERATION (MODEL 84351)

Insert the wand into the fill opening of the machine reservoir and rotate the unit's four-way valve to the "evacuate" position.

**Evacuate Mode:** Oil is withdrawn from the machine reservoir through the wand, connecting hose, four-way valve and into the pump inlet. The pump then forces the oil through the filter, four-way valve, suction hose, suction pipe and into the fifty-five gallon storage drum.

Couple an air supply to the air regulator inlet and adjust the air pressure to approximately 60 psi. It may be possible, depending upon the oil's viscosity, to increase the flowrate by increasing the air pressure to the pump. However, should the pump speed increase without a corresponding increase in flowrate, the pump is cavitating and the air pressure to the pump must be reduced.

After completing machine repairs, rotate the unit's four-way valve to the "fill" position, insert the wand into the fill opening of the machine reservoir and couple the air supply to the pump. The air pressure should not require adjustment.

**Fill Mode:** Oil is withdrawn from the fifty-five gallon storage drum through the suction pipe and suction hose, four-way valve, and into the pump inlet. The pump then forces the oil through the filter, four-way valve, connecting hose, wand and into the machine reservoir.

When the storage drum is fully evacuated, the pump speed will suddenly increase due to the unit pumping air instead of oil. Uncouple the air supply at this time.

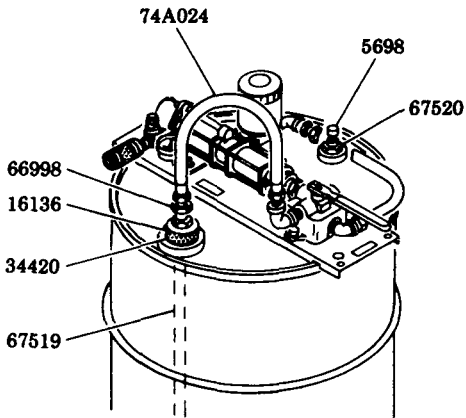
## FILTER ELEMENT

Use Purolator PER-20 or Fram P1653 cartridge, 10 micron filter / no relief valve.

## SERVICE PARTS

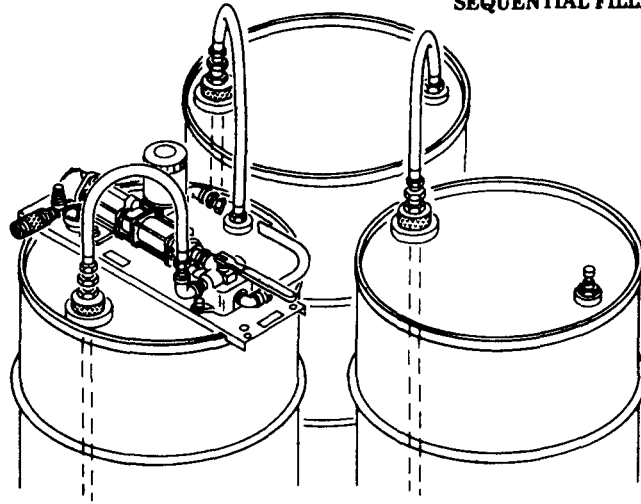
Part	Description	Part	Description
815	Air coupler	67274	Nipple
10772	Nipple	67515	Nipple
11659	Air nipple	67516	Suction pipe
50068	Screw	67517	Elbow
50757	Screw	67518	Nipple
51010	Nut	70236	4-way valve
51014	Nut	70237	Filter assembly
51412	Nut	74A017	Hose
63108	U-clamp	74A120	Hose
66100	Air gauge	83813-1	Pump assembly
66186	Lockwasher	93254	Wand
66998	Adapter union	360923	Bracket
67062	Street elbow	360924	Mounting plate
67153	Coupler	600003	Air regulator

## ACCESSORIES



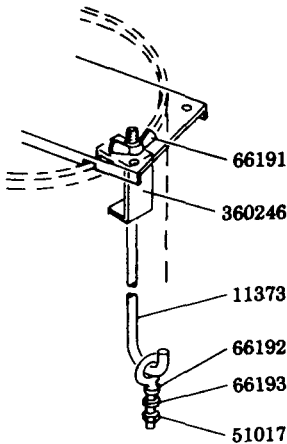
**MODEL 84353  
USED FOR  
BUNG SEALING**

**MODEL 84353  
USED FOR  
SEQUENTIAL FILLING**



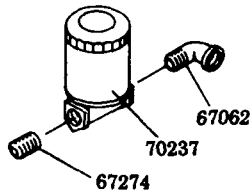
### 84353 BUNG SEALING KIT

For lubrovan installations  
to prevent loss of oil  
& entrance of contaminants.



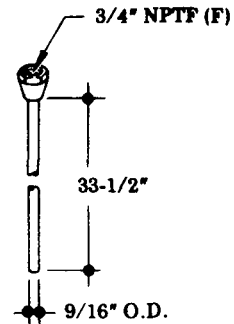
### 83131 TIE ROD ASSEMBLY

For mounting 55 gal. drums  
to lubrovan bed.



### 84354 FILTER KIT

For filtering lubricants  
for re-use.



### 93254 WAND

For insertion into  
hydraulic reservoirs.

### ACCESSORIES SERVICE PARTS

Part	Qty.	Description	Part	Qty.	Description
5698	1	Vent fitting	66998	1	Adapter union
11373	2	Tie rod	67062	1	Street elbow
16136	1	Bung bushing	67274	1	Nipple
34420	1	O-ring	67519	1	Suction pipe
51017	2	Nut	67520	1	Bushing
66191	2	Wing nut	70237	1	Filter assembly
66192	2	Eye bolt	74A024	1	Hose
66193	2	Lockwasher	360246	2	Drum clamp

### RETAIN THIS INFORMATION FOR FUTURE REFERENCE

When ordering replacement parts, list: Part Number, Description, Model Number, and Series Letter.

LINCOLN provides a Distributor Network that stocks equipment and replacement parts.