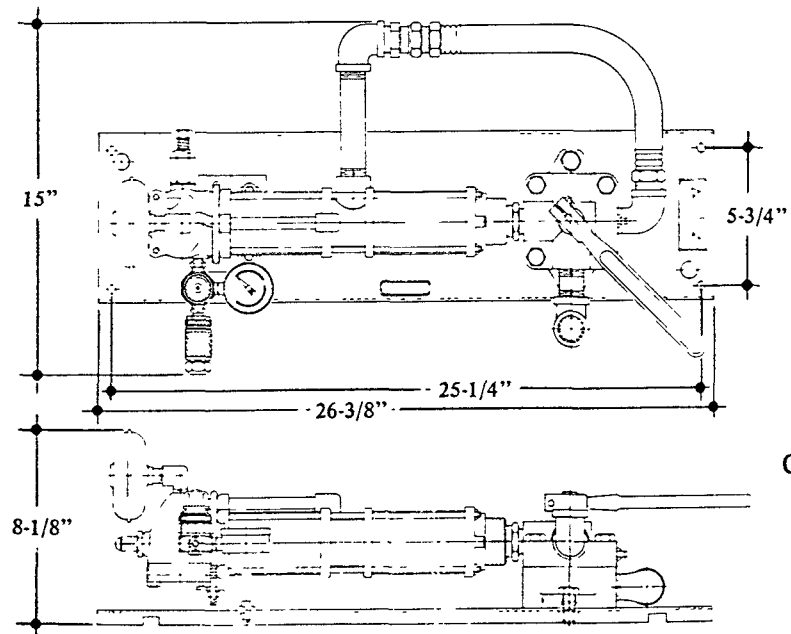
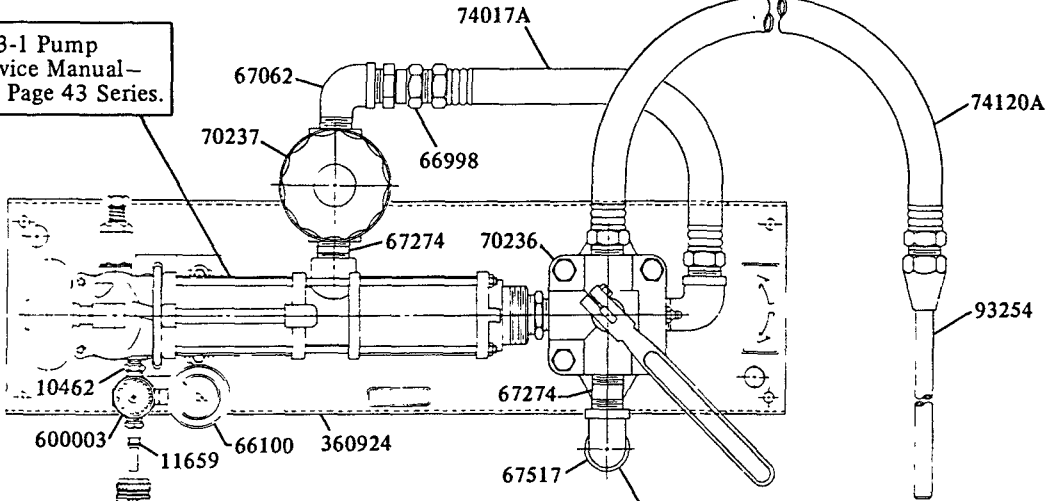


MODEL 84351
SERIES B
HYDRAULIC
FILTRATION UNIT

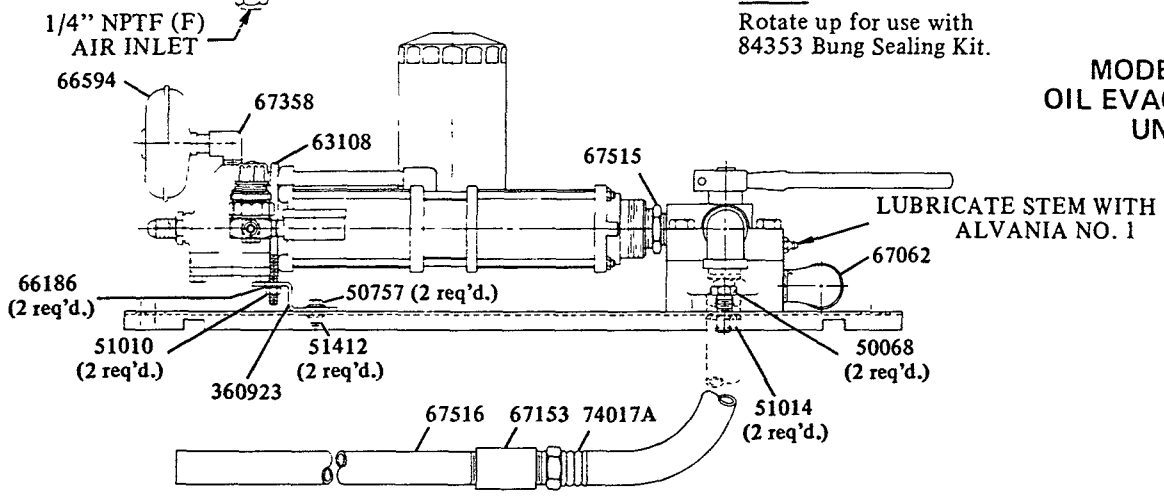


MODEL 84352
SERIES A
OIL EVACUATION
UNIT

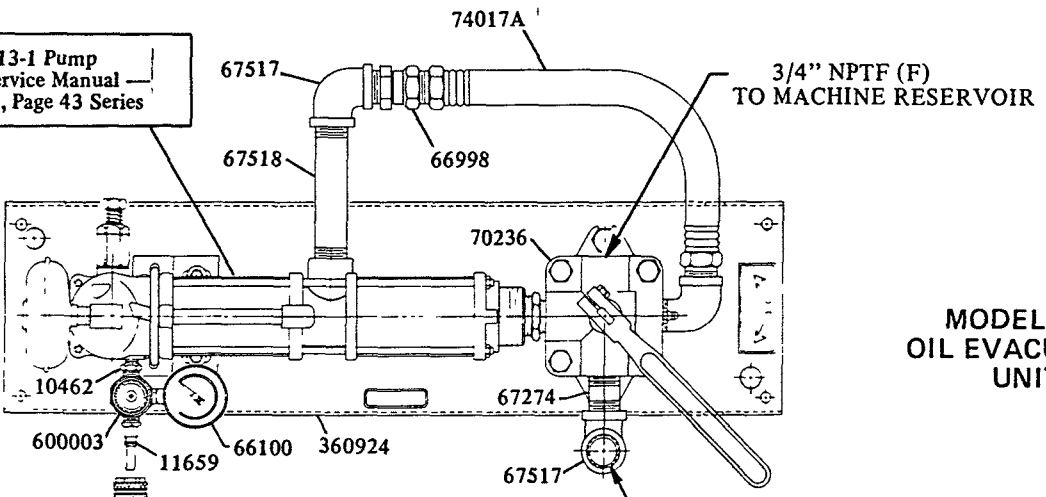
Model 83813-1 Pump
Refer to Service Manual—
Section A-6, Page 43 Series.



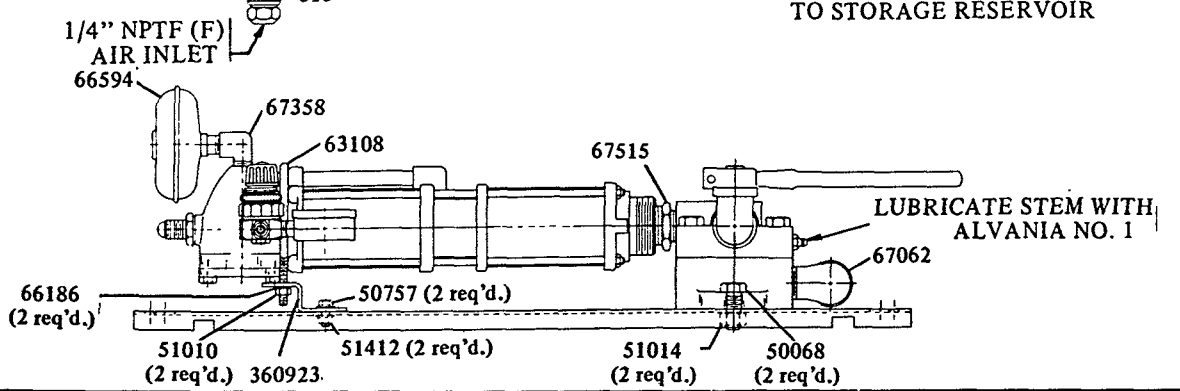
**MODEL 84352
OIL EVACUATION
UNIT**



Model 83813-1 Pump
Refer to Service Manual—
Section a-6, Page 43 Series



**MODEL 84352
OIL EVACUATION
UNIT**



SPECIFICATIONS

Pump Ratio: 1:1
 Air Inlet: 1/4" NPTF (F)
 Maximum Operating Pressure: 100 psi
 Lubricant Output: 4.5 GPM of SAE 30 oil @ 70°F with 60 psi air pressure
 Filter: Model 84351 - 10 micron nominal/ no relief valve
 Model 84352 - none

INSTALLATION

The mounting plate is notched to fit over the chime of a fifty-five gallon drum to retain the oil evacuator for portable use. For lub truck installations, the mounting plate is drilled for mounting to a flat surface with four 5/16" bolts, or to accept an 83131 Tie Rod Assembly.

Install the hydraulic filtration unit on a fifty-five gallon drum by grasping the unit from the filter side and tipping upward 90° so that the filter is horizontal (See Fig. 1). This maneuver bends the suction hose and raises the suction pipe, making it easier to insert into the bung opening. Position the mounting plate on the drum so that the retaining notches fit over the drum chime and the suction hose is centered in the bung opening.

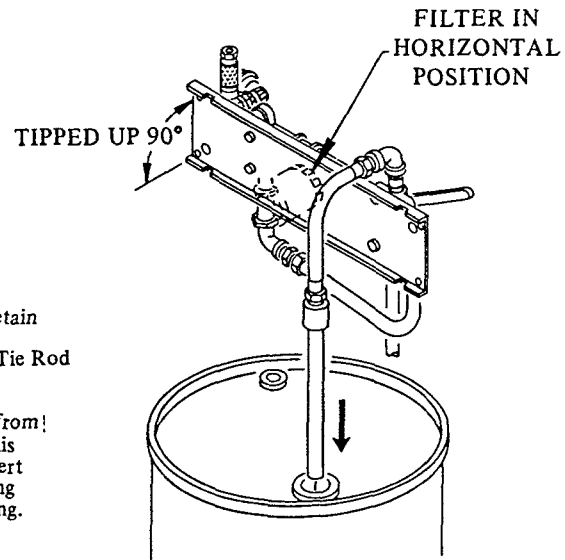


Fig. 1

OPERATION (MODEL 84351)

Insert the wand into the fill opening of the machine reservoir and rotate the unit's four-way valve to the "evacuate" position.

Evacuate Mode: Oil is withdrawn from the machine reservoir through the wand, connecting hose, four-way valve and into the pump inlet. The pump then forces the oil through the filter, four-way valve, suction hose, suction pipe and into the fifty-five gallon storage drum.

Couple an air supply to the air regulator inlet and adjust the air pressure to approximately 60 psi. It may be possible, depending upon the oil's viscosity, to increase the flowrate by increasing the air pressure to the pump. However, should the pump speed increase without a corresponding increase in flowrate, the pump is cavitating and the air pressure to the pump must be reduced.

After completing machine repairs, rotate the unit's four-way valve to the "fill" position, insert the wand into the fill opening of the machine reservoir and couple the air supply to the pump. The air pressure should not require adjustment.

Fill Mode: Oil is withdrawn from the fifty-five gallon storage drum through the suction pipe and suction hose, four-way valve, and into the pump inlet. The pump then forces the oil through the filter, four-way valve, connecting hose, wand and into the machine reservoir.

When the storage drum is fully evacuated, the pump speed will suddenly increase due to the unit pumping air instead of oil. Uncouple the air supply at this time.

FILTER ELEMENTS

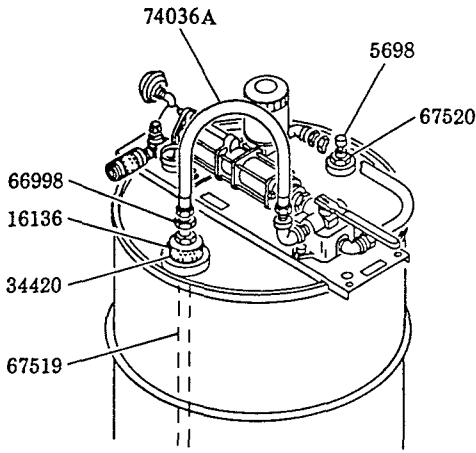
Use Zinga No. AE-10 10 micron filter / no relief valve.

SERVICE PARTS

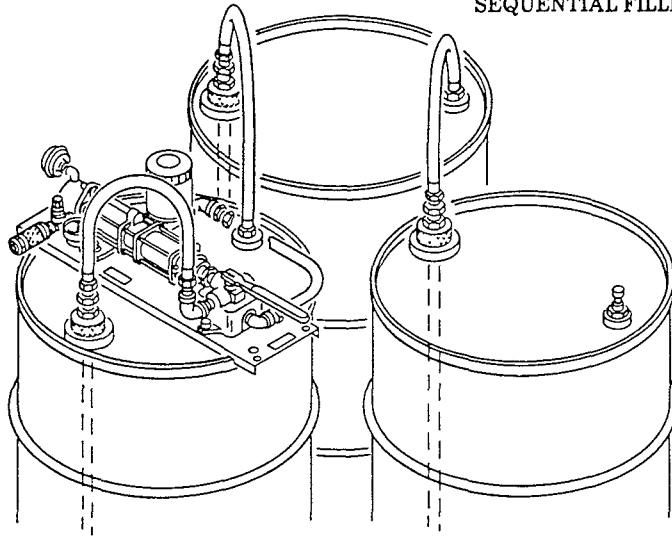
PART	DESCRIPTION	PART	DESCRIPTION
815	Air coupler	67274	Nipple
10462	Nipple	67358	Elbow
11659	Air nipple	67515	Nipple
50068	Screw	67516	Suction Pipe
50757	Screw	67517	Elbow
51010	Nut	67518	Nipple
51014	Nut	70236	4-way valve
51412	Nut	70237	Filter assembly
63108	U-clamp	74017A	Hose
66100	Air gauge	74120A	Hose
66186	Lockwasher	83813-1	Pump assembly
66594	Muffler	93254	Wand
66998	Adapter union	360923	Bracket
67062	Street elbow	360924	Mounting plate
67153	Coupler	600003	Air regulator

ACCESSORIES

MODEL 84353
USED FOR
SEQUENTIAL FILLING

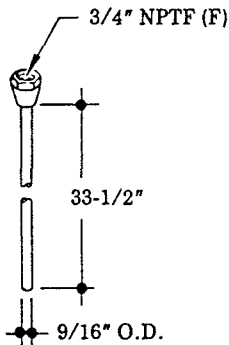


MODEL 84353
USED FOR
BUNG SEALING



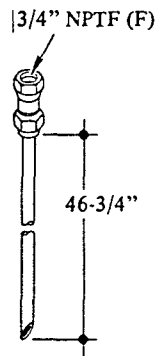
84353 BUNG SEALING KIT

For lubrovan installations
to prevent loss of oil
& entrance of contaminants.



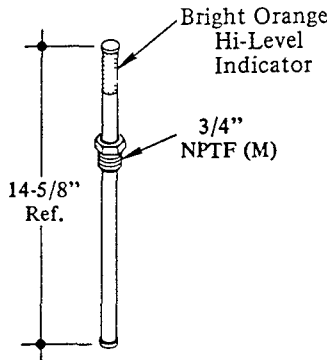
93254 WAND

For insertion into
hydraulic reservoirs.

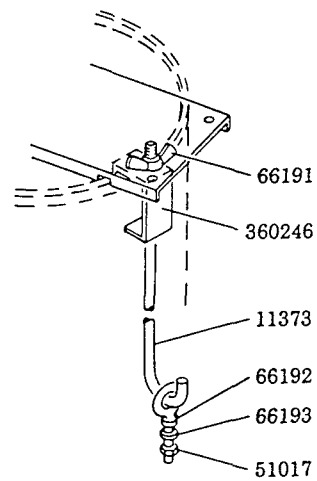


84358 WAND

5/8" O.D. Nylon tubing

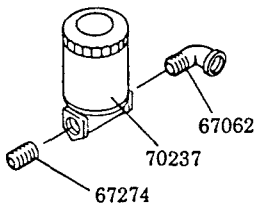


84355 FLOAT ASSEMBLY



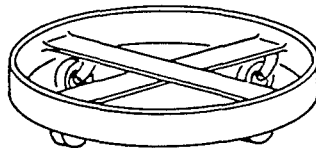
83131 TIE ROD ASSEMBLY

For mounting 55 gal. drums
to lubrovan bed.



84354 FILTER KIT

For filtering lubricants
for re-use.



84377 DRUM DOLLY

For 400 lb. or 55 gal. drums

ACCESSORIES SERVICE PARTS

PART	QUAN.	DESCRIPTION	PART	QUAN.	DESCRIPTION
5698	1	Vent fitting	66998	1	Adapter union
11373	2	Tie rod	67062	1	Street elbow
16136	1	Bung bushing	67274	1	Nipple
34420	1	O-ring	67519	1	Suction pipe
51017	2	Nut	67520	1	Bushing
66191	2	Wing nut	70237	1	Filter assembly
66192	2	Eye bolt	74036A	1	Hose
66193	2	Lockwasher	360246	2	Drum clamp

RETAIN THIS INFORMATION FOR FUTURE REFERENCE

When ordering replacement parts, list: Part Number, Description, Model Number, and Series Letter.

LINCOLN provides a Distributor Network that stocks equipment and replacement parts.
A list of Authorized Service Departments will be furnished upon request.