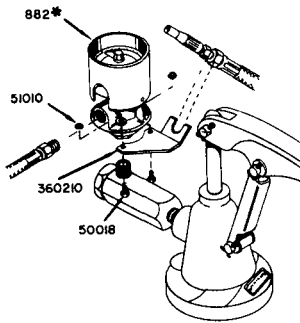
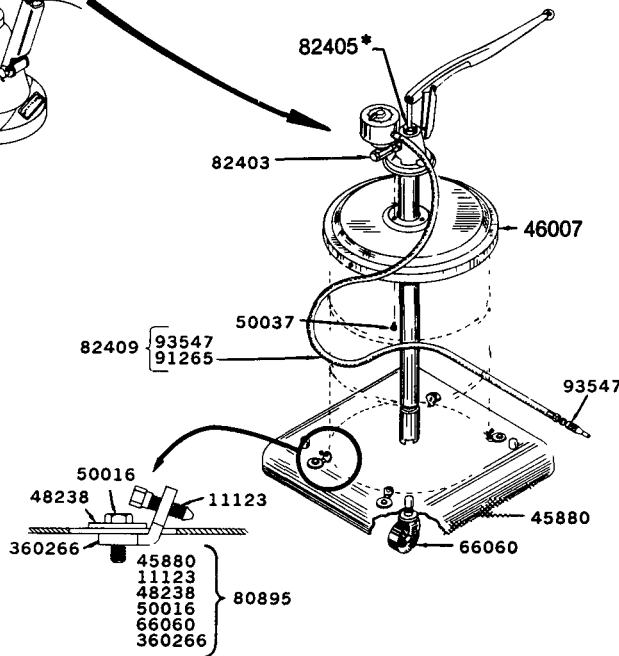


**82403
FILTER ASSEMBLY**



*** REFER TO SEPARATE INSTRUCTIONS**

82405	1	Basic Pump
882	1	Meter Ass'y

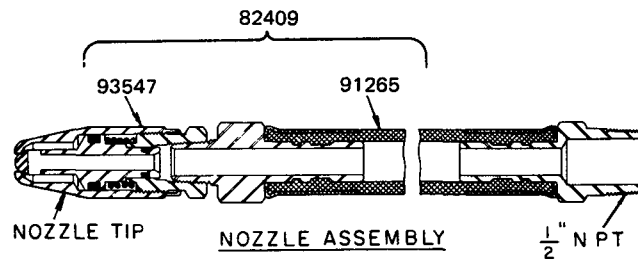


SERVICE PARTS

Part	Qty.	Description	Part	Qty.	Description
882	1	Meter	80895	1	Truck assembly
11123	4	Set screw	82403	1	Filter assembly
45880	1	Truck plate	82405	1	Bare pump assembly
46007	1	Drum cover	82409	1	Nozzle & hose assembly
48238	4	Washer	91265	1	Hose assembly
50016	4	Screw	93547	1	Nozzle
50018	2	Screw	360210	1	Nozzle holder
50037	3	Screw	360266	4	Clamp
51010	2	Nut			
66060	4	Caster			

TO ASSEMBLE DRUM COVER TO LUBRICANT DRUM

Position PUMP with DRUM COVER on Lubricant Drum. Be sure DRUM COVER is resting securely on bead of drum. ADJUSTING SCREWS are provided with Model. Thread SCREWS into TEE NUTS in DRUM COVER and tighten securely to Lubricant Drum.



MODEL 82409 NON-DRIP NOZZLE ASSEMBLY

Before operating PUMP HANDLE first unscrew the NOZZLE TIP three or four full revolutions. Lubricant can then pass through the HOSE and NOZZLE ASSEMBLY when PUMP HANDLE is operated. When PUMP HANDLE is not in operation, a plunger in the NOZZLE TIP prevents the lubricant from draining out of the HOSE EXTENSION. The NOZZLE should always be closed when the PUMP is not being used. To close NOZZLE turn the NOZZLE TIP clockwise and tighten by hand.

If lubricant continues to flow from NOZZLE TIP after PUMP is not in operation the PLUNGER or SEAT for PLUNGER is worn, pitted or otherwise damaged. Tighten and retighten NOZZLE TIP two or three times with pliers to reseal PLUNGER.

————— RETAIN THIS INFORMATION FOR FUTURE REFERENCE —————

When ordering replacement parts, list: Part Number, Description, Model Number, and Series Letter.

LINCOLN provides a Distributor Network that stocks equipment and replacement parts.