

ROLLING OIL DRAIN PAN

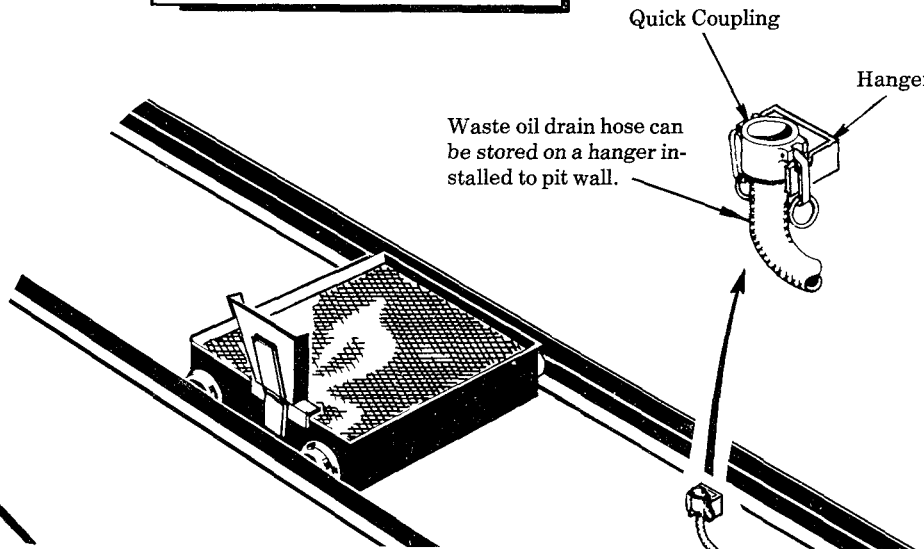
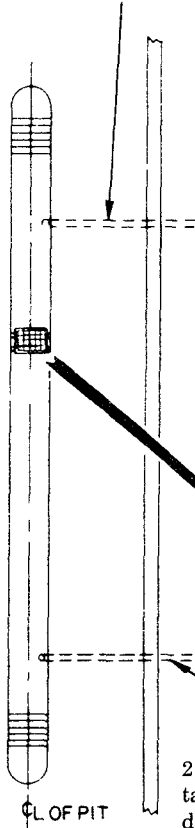


Model 84000

Series "B"

2" pipe to waste oil drain tank. (Provide pitch for drainage to tank.)

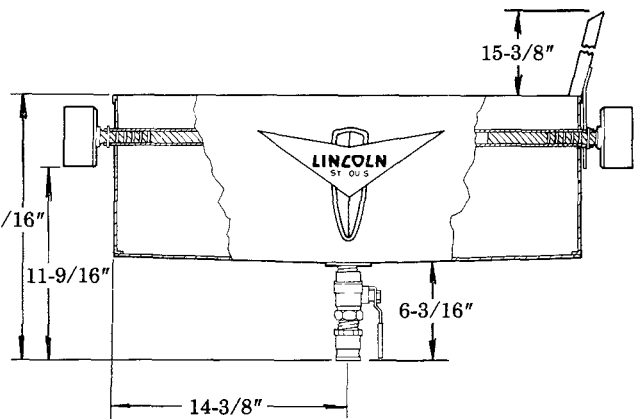
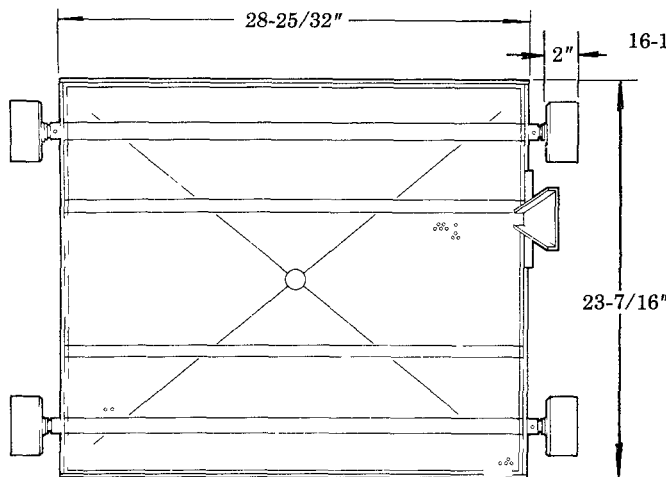
CAUTION
Tracks MUST be parallel
Wheel engagement with track critical.
Refer to Installation Dimensions.



Rolling Drain Pan

2" pipe to waste oil drain tank. (Provide pitch for drainage to tank.)

Quick Coupling
Hanger
Waste oil drain hose can be stored on a hanger installed to pit wall.
Pipe Elbow
2" pipe drain to underground waste oil tank.



**ROLLING DRAIN PAN
OVERALL DIMENSIONS**

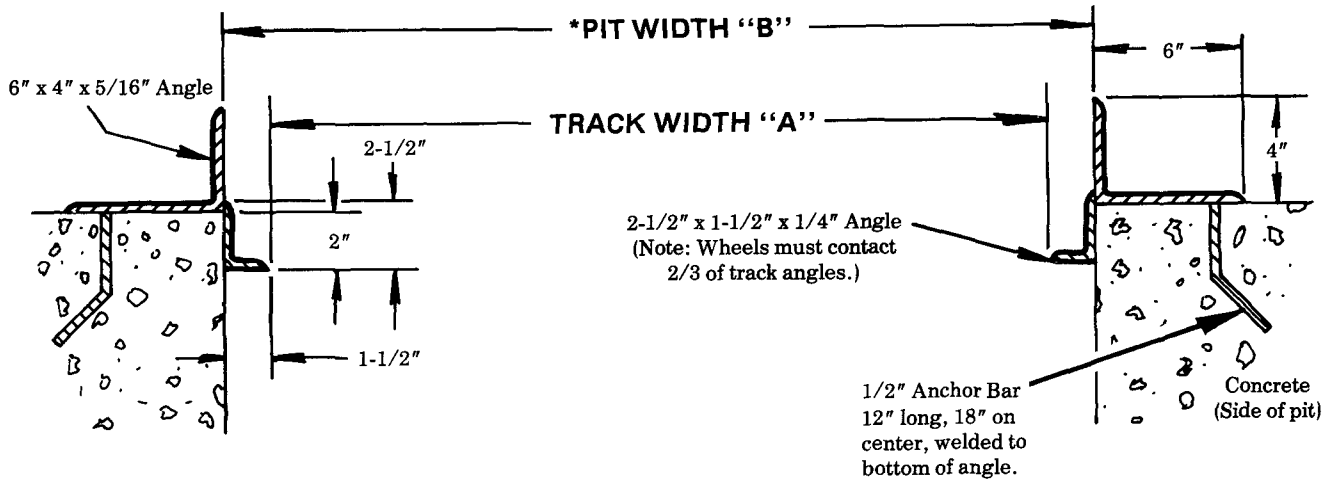
LINCOLN ST. LOUIS
4010 GOODFELLOW BLVD • ST LOUIS MO 63120 • (314) 679-4200

A DIVISION OF
McNEIL
CORPORATION

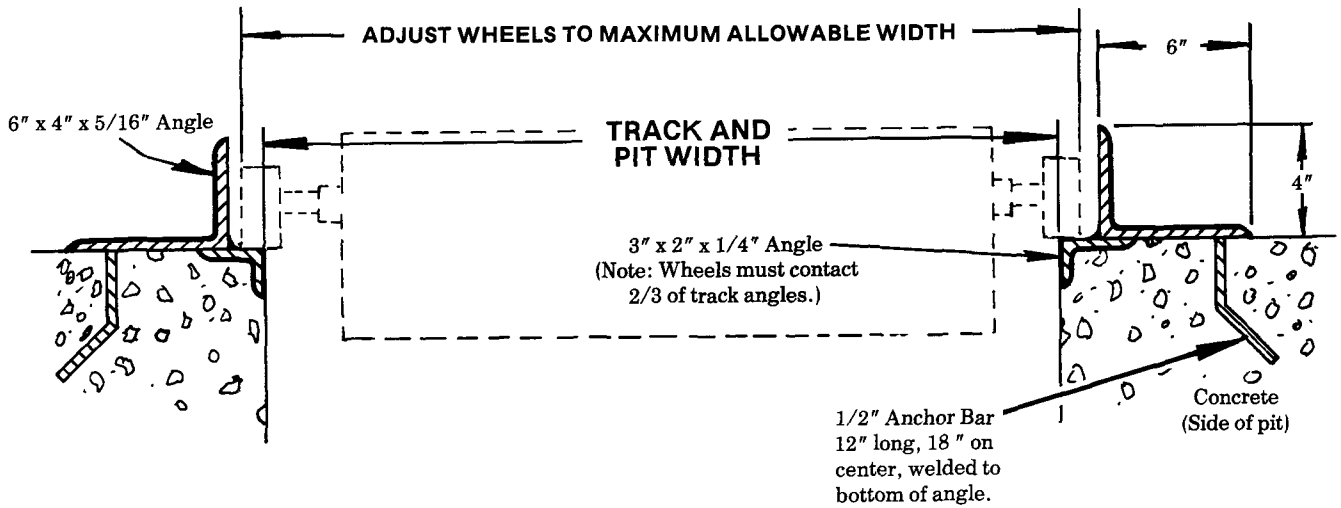
SECTION - **B4**
PAGE - **19C**

TYPICAL SERVICE PIT DETAILS

PIT STYLE #1



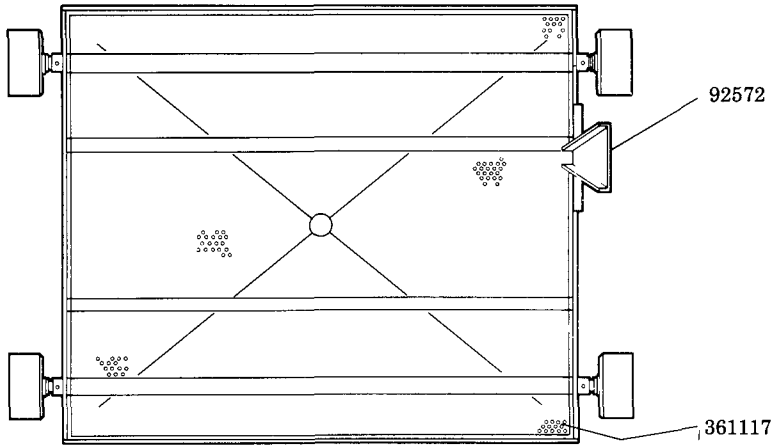
PIT STYLE #2



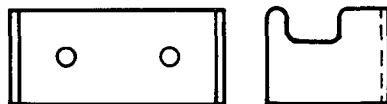
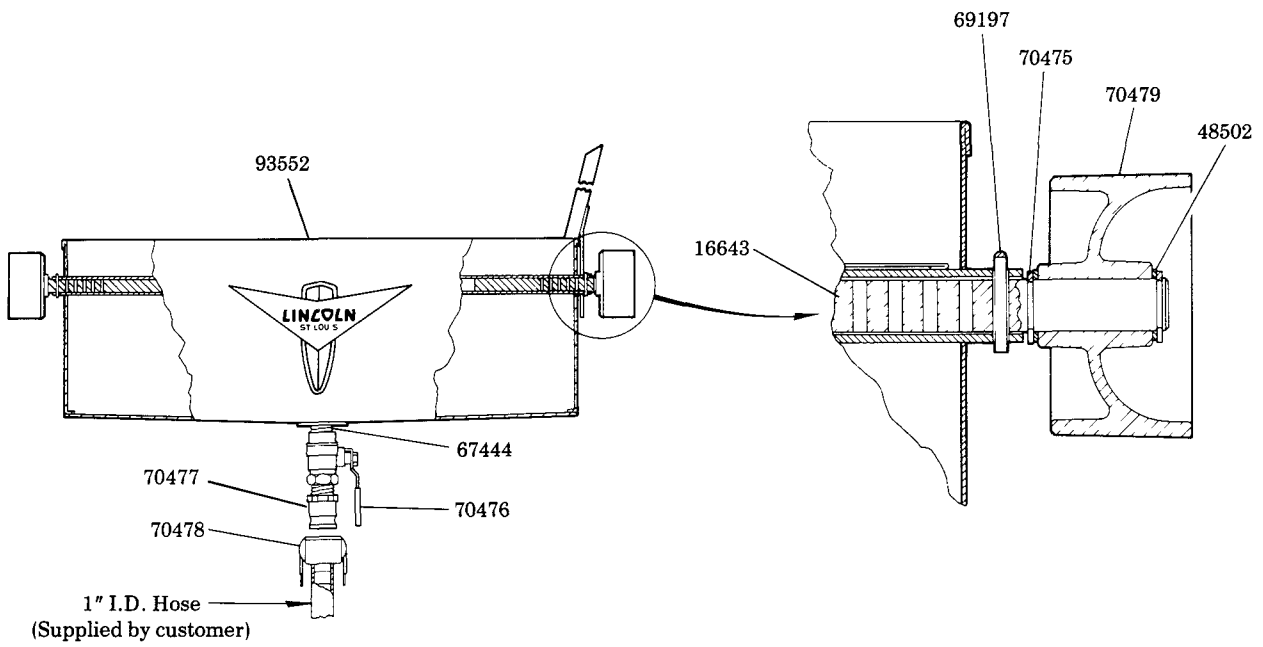
MODEL 84000 WITH:	INSTALLATION DIMENSIONS FOR PIT STYLE #1				INSTALLATION DIMENSIONS FOR PIT STYLE #2	
	TRACK WIDTH "A"		*PIT WIDTH "B"		TRACK & PIT WIDTH	
	MAX.	MIN.	MAX.	MIN.	MAX.	MIN.
STANDARD 16643 (4) AXLES	37-1/2"	33"	40-1/2"	36"	37-1/2"	33"
16643 (2) AXLES AND †16645 (2) AXLES	42"	37-1/2"	45"	40-1/2"	42"	37-1/2"
†16645 (4) AXLES	46-1/2"	42"	49-1/2"	45"	46-1/2"	42"

*Dimensions are for 1-1/2" track - add 1" if using 2" track.

†16645 Axles are accessory items - must be ordered separately.



**ROLLING
OIL DRAIN PAN
ASSEMBLY**



361118
(Hanger for 70478)