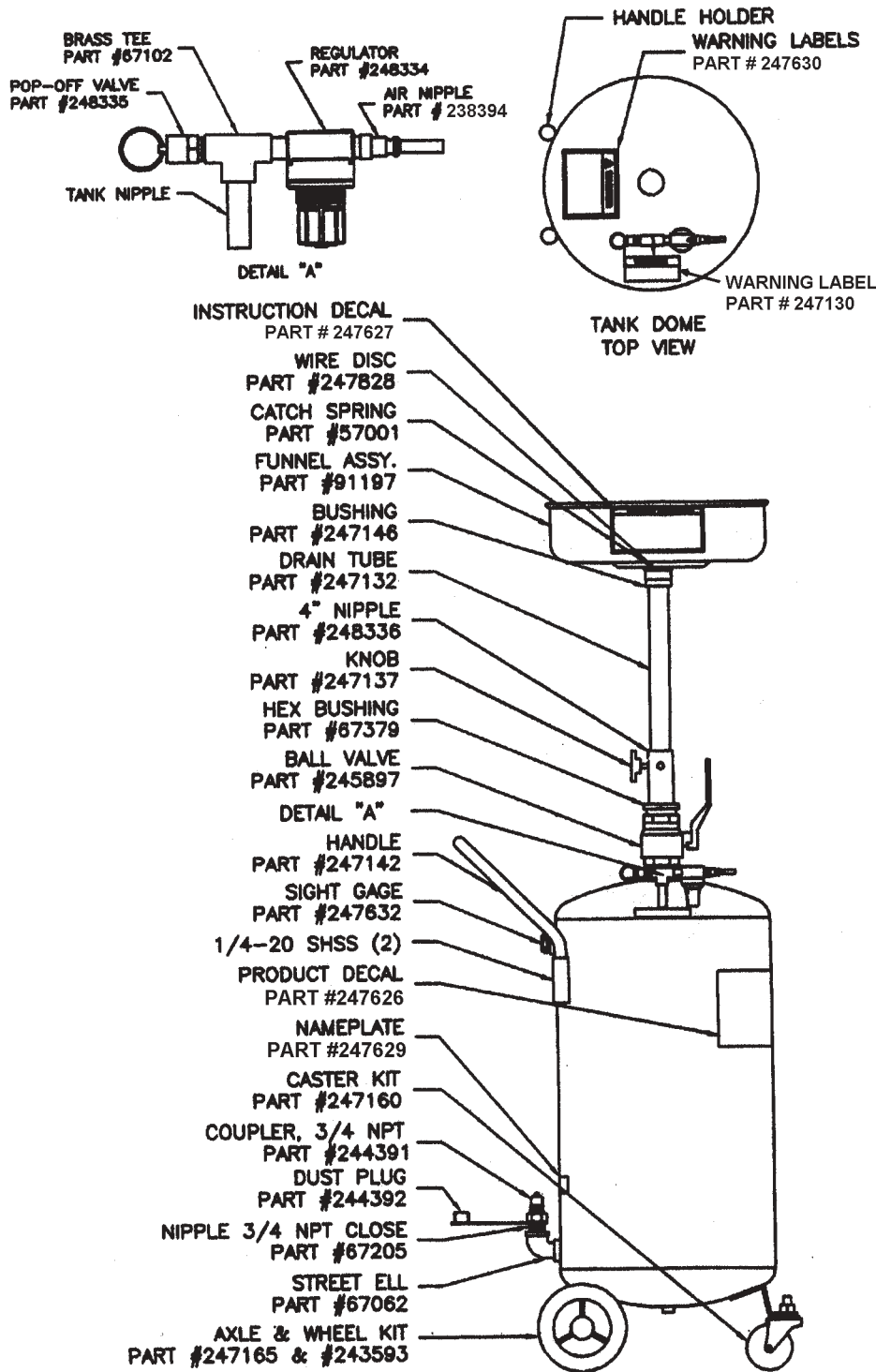


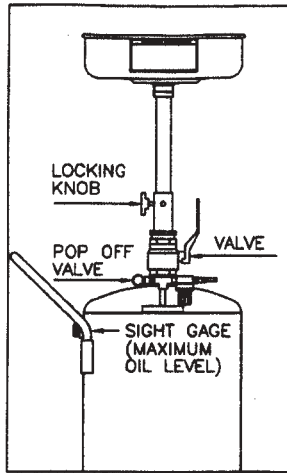
SERVICE PARTS SHEET



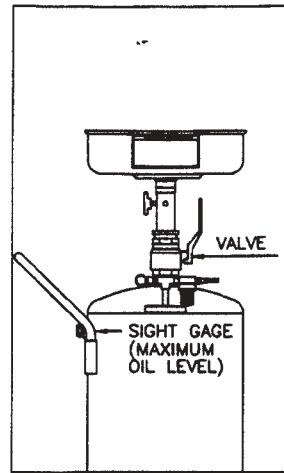
ASSEMBLY

1. Remove tank from box. Slide 1/2" diameter steel axle through axle housing on bottom of tank. Place wheel on axle, securing with palnut. Repeat for other wheel, then snap on hubcaps.
2. Remove wood spacers from caster brackets. Slide stud of caster through bracket, securing with washer, lock-washer and nut. Repeat for other caster.
3. Place TFE pipe sealant on threads of 3/4 NPT street ell and screw into lower fitting on side of tank. Place TFE pipe sealant on one end of 3/4 NPT close nipple and screw into street ell. Place TFE pipe sealant on other end of 3/4 NPT close nipple. Slide brass hydraulic coupler through open end of dust plug and screw onto nipple.
4. Place TFE pipe sealant on threads of porthole view gauge and screw into 3/4 NPT pipe port on back side of tank.
5. Place handle into 2 handle holders on backside of tank, securing with 1/4-20 SHSS.
6. Place TFE pipe sealant on 1 1/2 NPT nipple on top dome of tank. Screw 1 1/2 ball valve into nipple. Screw hex bushing into ball valve and 4" pipe nipple into hex bushing. Screw clamping knob into 4" pipe nipple, (Note: only one of the four holes in 4" nipple is threaded. The other 3 holes are non threaded pressure relief ports).
7. Place TFE pipe sealant on red funnel adapter bushing and screw into funnel assembly. Place TFE pipe sealant on drain tube and screw into bushing/funnel assembly. Then put drain tube/funnel assembly into tank through the 4" nipple and ball valve assembly. ALL fittings should be tight so as to prevent any leaking.
8. Place catch spring down into the drain within the funnel assembly.

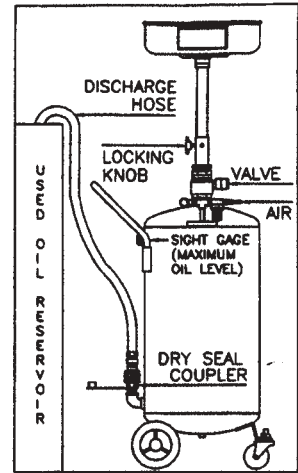
OPERATION



To drain oil:
With valve fully open, (Valve handle in vertical position), raise drain bowl to desired height and lock in place. Drain oil into bowl/tank assembly. Always check sight gauge on back side of tank before draining used oil into tank. DO NOT fill tank above maximum oil level as shown.



To transport tank:
With valve fully open, (Valve handle in vertical position), lower drain bowl as shown above. Always use the tank handle to transport the tank assembly.



To evacuate oil:
Evacuate used oil from tank when oil level is visible in sight gauge. DO NOT fill tank above maximum oil level as shown above. Raise drain bowl and lock in place, then close valve fully, (Valve handle in horizontal position). Remove dust plug from coupler and attach discharge hose **securely** onto the dry seal coupler. Connect air to inlet nipple and discharge oil. Never leave unit unattended when evacuating oil. Immediately disconnect air supply when oil is no longer discharging into reservoir. Remove discharge hose from coupler and vent excess pressure from tank by manually relieving pop off valve on top dome of tank. Place dust plug onto dry seal coupler.

SERVICE PARTS LIST - MODEL 3633

PART	QUANTITY	DESCRIPTION	PART	QUANTITY	DESCRIPTION
57001	1	Catch Spring	247142	1	Handle
67062	1	3/4 Street Elbow	247146	1	Bushing
67102	1	1/4 Tee	247160	2	Caster Kit
67205	1	Nipple 3/4 NPT Close	247165	1	Axle
67379	1	Hex Bushing	247626	1	Product Decal
91197	1	Funnel Assembly	247627	1	Instruction Decal
238394	1	Air Nipple	247629	1	Nameplate
243593	2	Wheel Kit	247630	1	Warning Label
244391	1	Coupler, Hydraulic	247632	1	Sight Gauge
244392	1	Dust Plug	247828	1	Wire Disc
245897	1	Ball Valve	248334	1	Regulator
247130	1	Warning Label	248335	1	Relief Valve
247132	1	Drain Tube	248336	1	4" Nipple
247137	1	Knob			

Retain this information for future reference.

When ordering replacement parts, list: Part Number, Description, Model Number, and Series Letter.

Lincoln provides a Distributor Network that stocks equipment and replacement parts.