

Model 4160C Filter Crusher

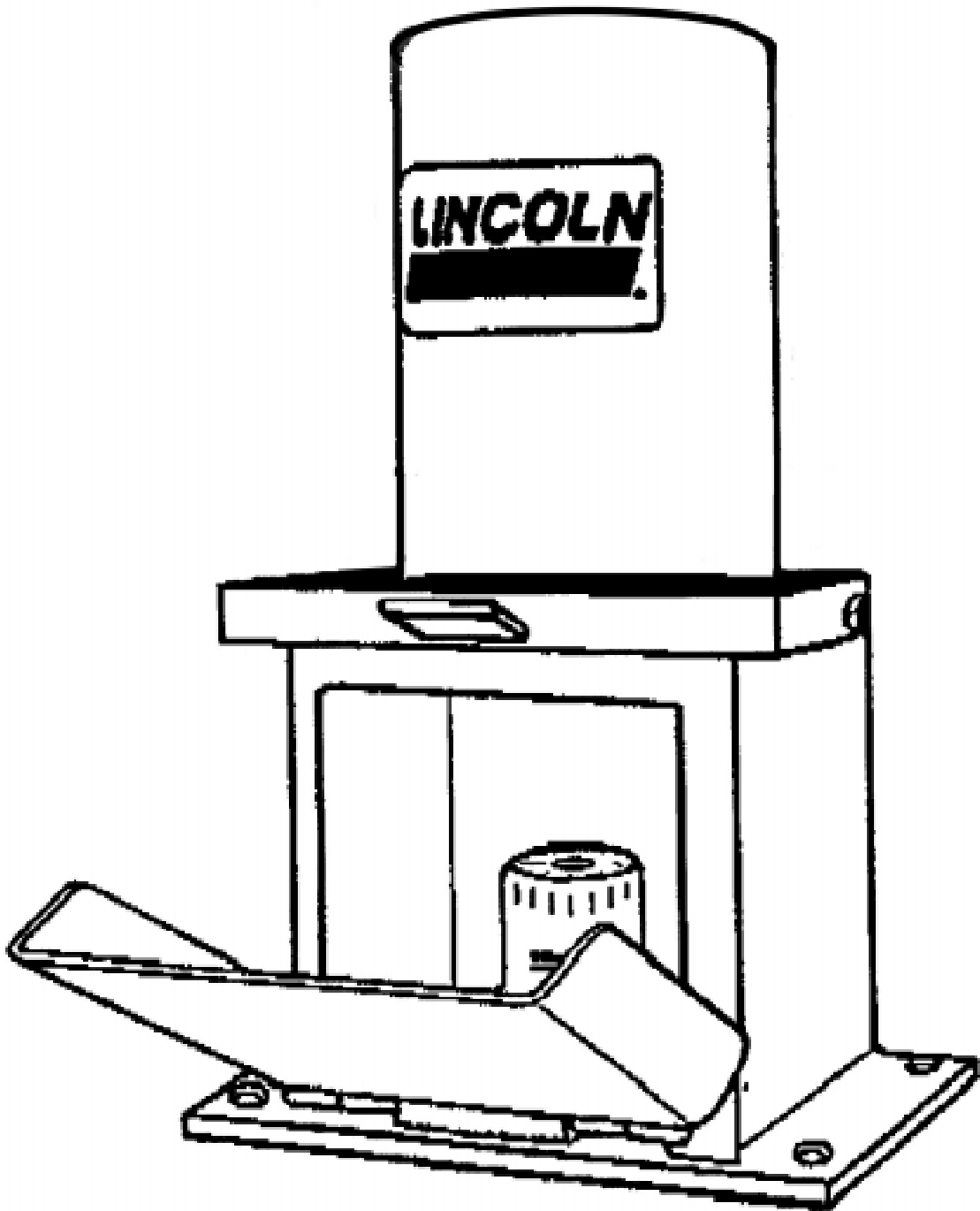


Table of Contents

Components.....	2
Assembly.....	2
Safety Checks.....	2
Safety Operations.....	2
Crushing Operations.....	2
Operating Characteristics.....	2
Maintenance.....	2
Specifications.....	2
Repair Parts List.....	4

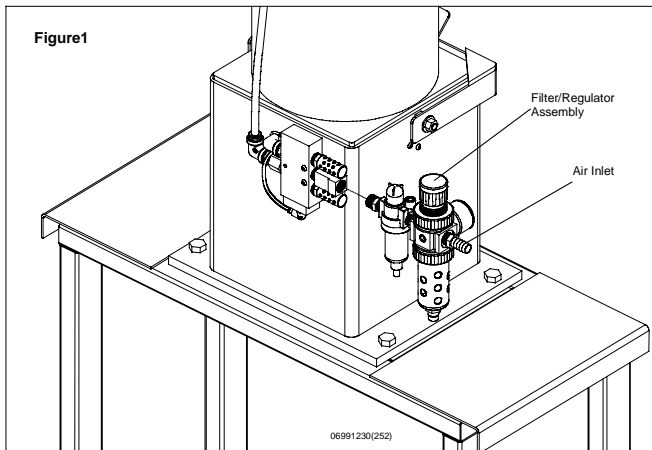
1. Components

- A. Crusher Cabinet.
- B. 150 psi Filter/Regulator, Oiler, Fittings, Bolt kit.
- C. 1-3/4" hex nipple for the drain.

2. Assembly

- A. Assemble the Filter/Regulator assembly using a thread sealer.

Make sure that the arrows are pointing toward the unit (see Fig 1).



- B. Fill the oiler before attaching airline. NEVER REMOVE OILER WITH AIR ATTACHED.
- C. Route your airline safely to prevent tripping and possible tipping the machine over. Use an unrestricted airline (no quick connects) at 120-150 psi and 3/8" to 1/2" ID.
- D. Attach the 3/4" nipple to the bottom of the unit and select a waste oil container to put under the unit. A hose may be run from the outlet to a remote container as long as the unit drains properly.
- E. Turn on air and set regulator to 120-150 psi.

3. Safety Checks

- A. Check crusher mounting for tightness.
- B. Check Air Line and waste oil line for loose connections, constrictions, and non-tripping routings.
- C. Check that the Air Line delivers 120-150 psi to the crusher Filter-Regulator.

4. Safety Operations

- A. Do not crush aerosol cans, glass, or content filled metal containers. Dangerous shrapnel explosions could happen.
- B. Place only one filter in chamber, vertically only, open side down.

- C. Never place more than one filter in the crushing chamber at any time. Operate only with slip-in tray in place.

5. Crushing Operations

- A. Place one filter, vertically in chamber, open side down.
- B. Close door and pull down latch handle. The crushing operation will start immediately.
- C. Within 15-30 seconds, depending on filter size and weight, the filter will be crushed 70-79% of its original size.
- D. Lift handle and open door. Remove filter and discard properly. NEVER REACH INSIDE UNIT BEFORE RAM RETURNS TO THE TOP.
- E. The regulator gauge will show when max pressure is reached. A few seconds at max pressure will give maximum crush.

6. Operating Characteristics

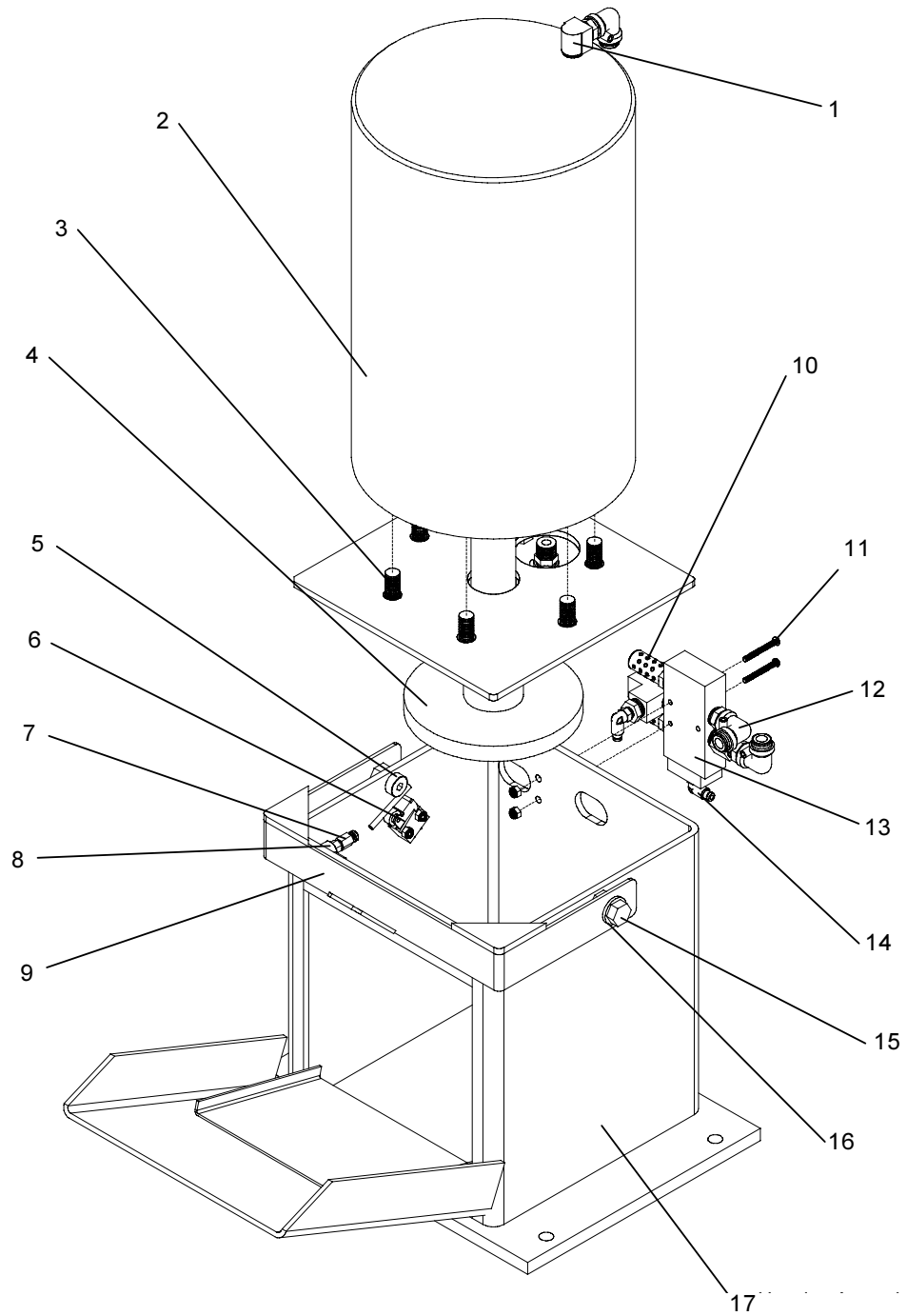
- A. When the filter's case wall is initially collapsed by the crushing plate, a distinct thud sound will be heard.
- B. The amount of filter crush is determined by the size and weight of the filter. Weight refers to the amount and density of the filtering medium inside the filter. Filter crush is also determined by the psi air supply to the crusher. Maintain 120-150 psi. Filter crush is also determined by time. Allow the machine to crush 15-30 seconds or longer if air supply is insufficient.

7. Maintenance

- A. Check oiler level weekly to keep adequate oil in the air cylinder. Use 10W 30 non-detergent or air compressor oil to two cycle engine oil.
- B. Turn the drain valve at the bottom of the filter/regulator counterclockwise once a week to release water filtered from the air system.
- C. Periodically check air and oil fittings for tightness. Check stand and floor mount bolts.
- D. Remove paper and paint chips from cabinet interior weekly to minimize oil drain blockage.
- E. Check the ram bolt periodically for tightness.

SPECIFICATIONS

Maximum Crushing Pressure.....	7500 lbs.
Filter capacity.....	One Filter
Filter type.....	Car/light truck
Filter crush.....	79 to 79%
Residual oil removed from filter.....	95-98%
Time to crush filter.....	15 seconds
CFM required.....	4.4
Overall width.....	14 1/2"
Overall height.....	27"
Overall depth.....	13 1/2"
Chamber width.....	9"
Chamber height.....	8 1/2"
Chamber depth.....	9"
Required air pressure.....	120-150 PSI
Total weight.....	141 lbs.



Parts List

Item No.	Description	Part No.
1	Street Elbow	271424
2	Cylinder Assembly	271425
3	Hex Bolt	271426
4	Ram Plate	271427
5	Bolt Handle Switch	271428
6	Limit Valve	271429
7	Tube Fitting	271430
8	Limit Valve	271431
9	Handle Weldment	271432
10	Silencer	271433
11	Screw BHSC	271434
12	Tube Fitting	271435
13	Pilot Valve	271436
14	Tube Fitting	271437
15	Hex Bolt	271438
16	Flat Washer	271439
17	Housing Assembly	271440
*18	Nylon Tubing 5/32"	271441
*19	Nylon Tubing 3/8"	271442
*20	Filter Regulator	271465
*21	Oiler	271466

* Not Shown

Americas:
 One Lincoln Way
 St. Louis, MO 63120-1578
 USA
 Phone +1.314.679.4200
 Fax +1.800.424.5359

Europe/Africa:
 Heinrich-Hertz-Str 2-8
 D-69183 Walldorf
 Germany
 Phone +49.6227.33.0
 Fax +49.6227.33.259

Asia/Pacific:
 25 Int'l Business Park
 #01-65 German Centre
 Singapore 609916
 Phone +65.562.7960
 Fax +65.562.9967

© Copyright 2000
 Printed in USA
 Web site:
www.lincolnindustrial.com