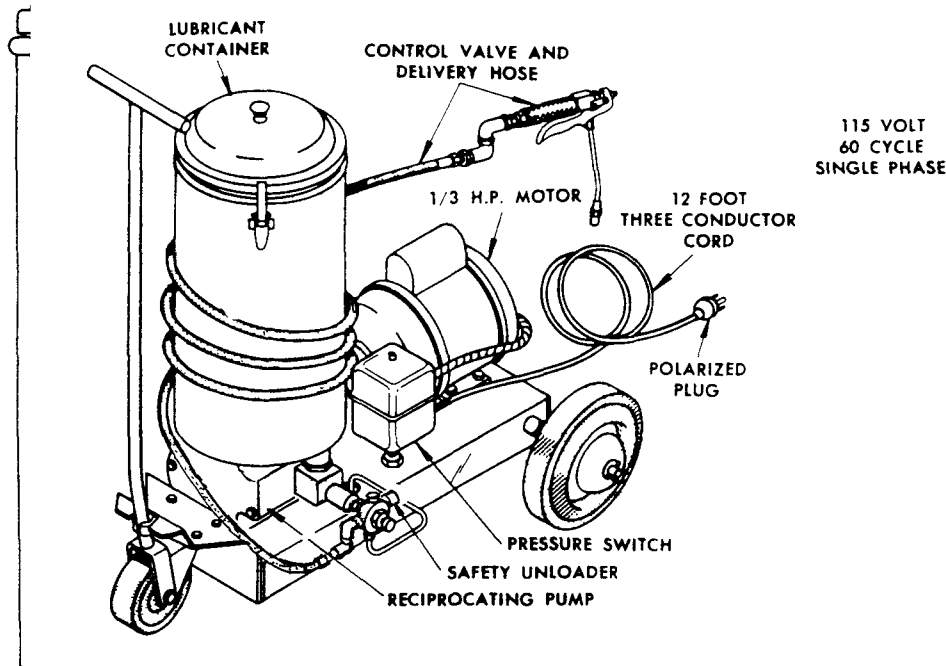


PORTABLE



MODEL 251

For dispensing oils and light greases, NLGI #1. Includes a WEIGHTED FOLLOWER

MODEL 252

For dispensing heavy greases, NLGI #3. Includes a SCREW PRIME FOLLOWER (Not Illustrated).

If longer than standard hose is to be used, factory should be consulted.

SPECIFICATIONS

Dimensions 36¼" x 28" long x 17½" wide

Output — 6 oz. per minute

Power requirements —

115/230 volt, 5.4/2.7 amp.

Lubricant capacity — 30 lbs.

OPERATING INSTRUCTIONS

FILLING CONTAINER

Remove COVER and FOLLOWER from CONTAINER. Transfer LUBRICANT from original lubricant drum to CONTAINER, using care to pack LUBRICANT solid and free of air pockets. Keep LUBRICANT clean and free from contamination. Replace FOLLOWER, pressing it firmly against LUBRICANT.

NOTE: When refilling CONTAINER always remove STRAINER from bottom of CONTAINER and clean thoroughly. (Model 251 only).

OPERATION

Refer to separate sheet for maintenance of NOZZLE CONTROL VALVE and SWIVELS. A5, Page 52 Series.

Connect PLUG of CORD to electrical outlet. Operate PUMP with CONTROL VALVE open until LUBRICANT flows freely from CONTROL VALVE NOZZLE.

Releasing of CONTROL VALVE HANDLE permits PUMP to build up lubricant pressure in the DELIVERY HOSE until at a predetermined pressure, the PRESSURE SWITCH breaks the electrical circuit to shut off the MOTOR. When CONTROL VALVE is opened the pressure in the DELIVERY HOSE decreases and PRESSURE SWITCH closes electrical circuit to operate PUMP.

The PRESSURE SWITCH is factory-set to shut off PUMP at 5,000 p.s.i.g. lubricant pressure and to start PUMP when pressure drops to 2,500 p.s.i.g.

Refer to separate sheet, C-8, page 9 Series for 66266 PRESSURE SWITCH.

The safety UNLOADER (set at factory for 6,000 p.s.i.g. does not require adjustment) will open and dispel lubricant, relieving the lubricant pressure if PRESSURE SWITCH fails to function.

Refer to separate sheet for maintenance instructions
(C4, Page 13 Series)

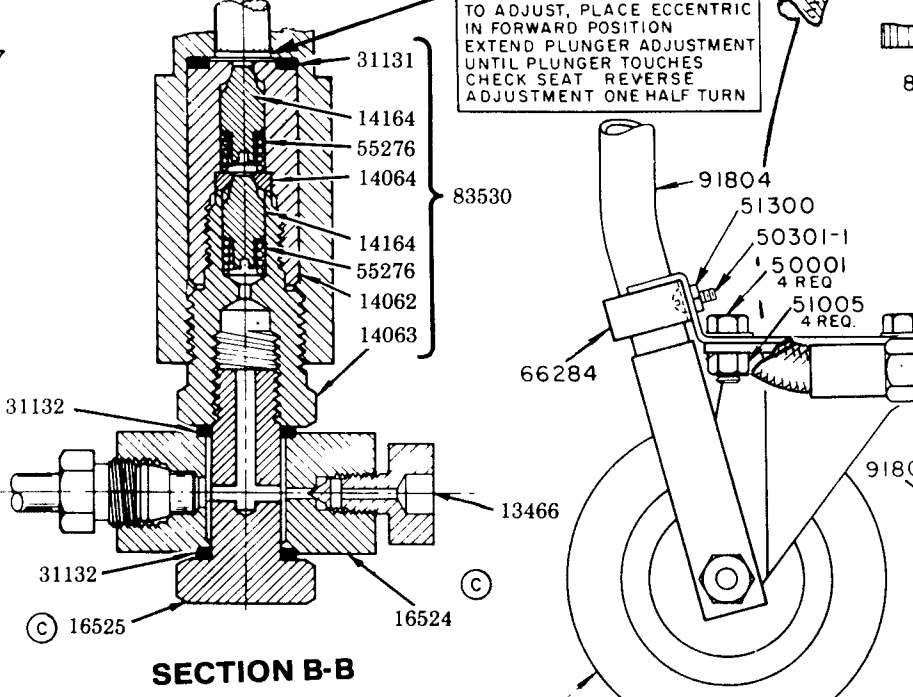
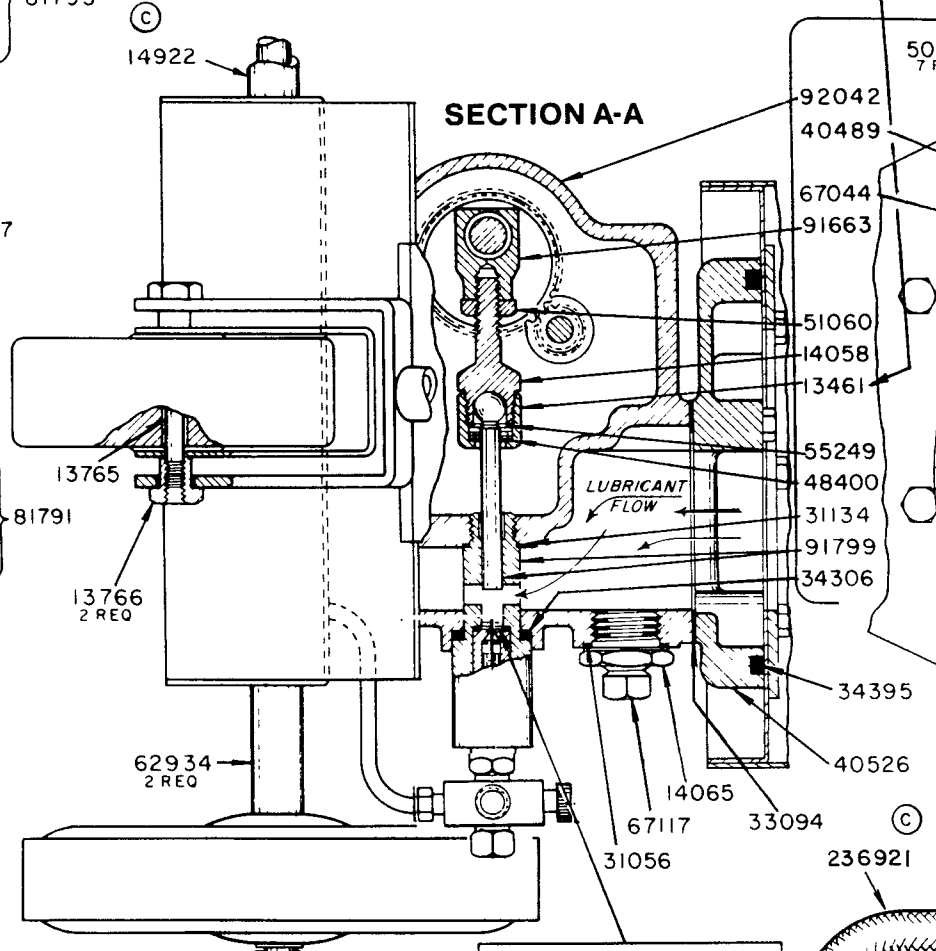
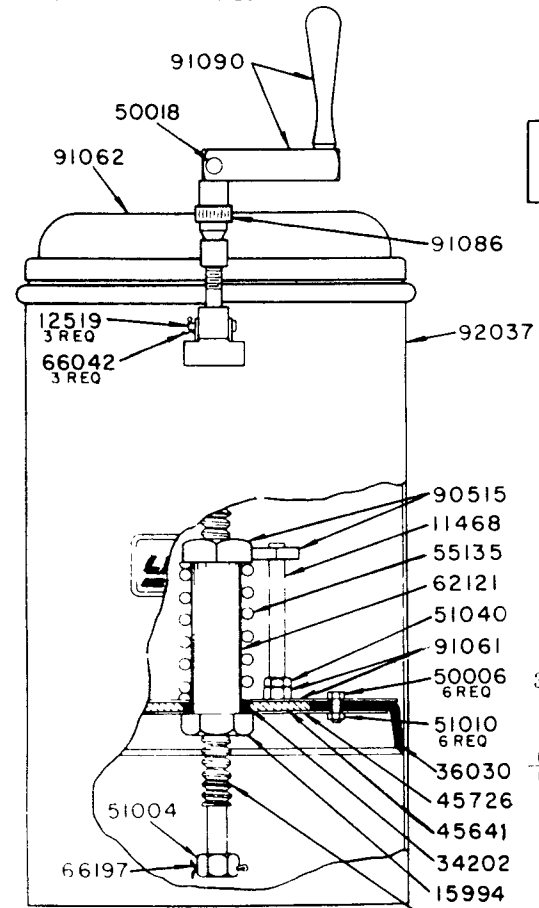
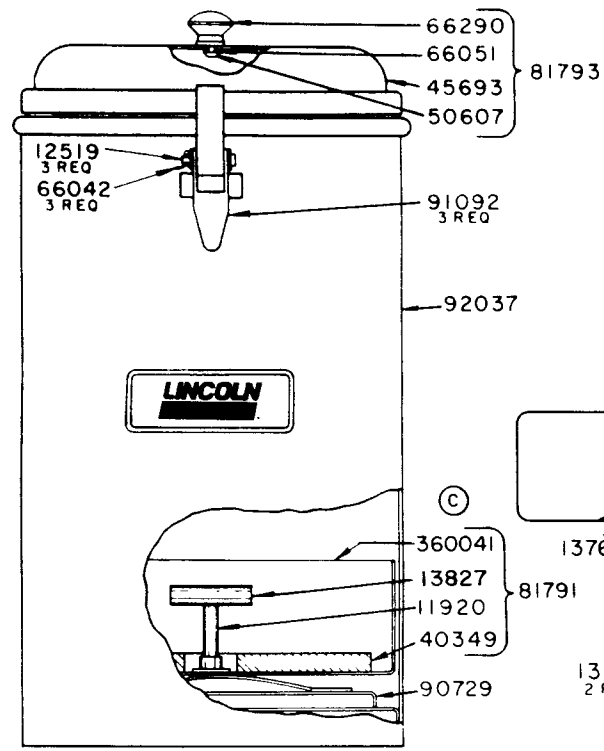
LINCOLN

A PENTAIR COMPANY

One Lincoln Way
St. Louis, Missouri 63120-1578
(314) 679-4200
Customer Service, (314) 679-4300

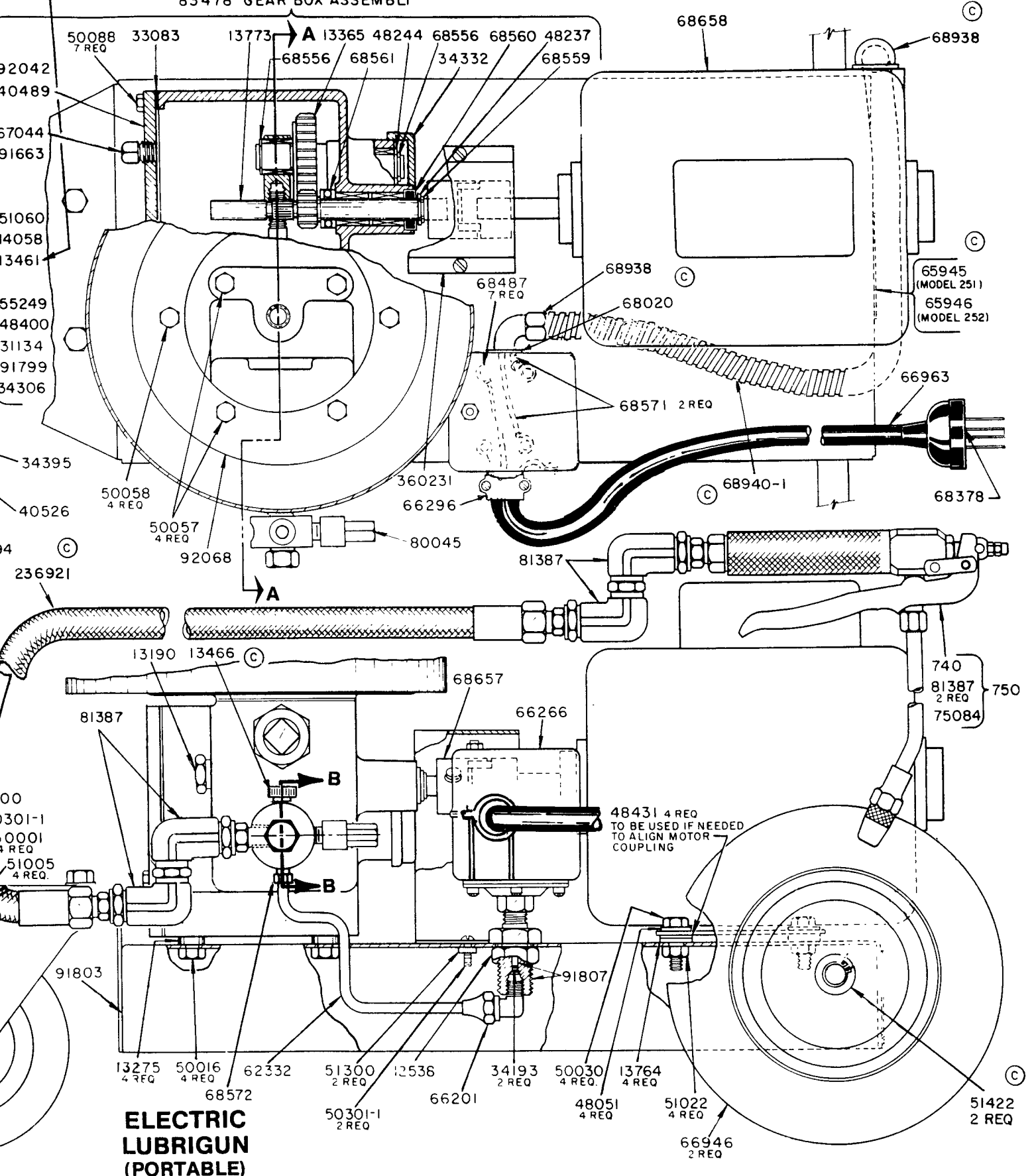
Copyright 1987
Printed in U.S.A.

Section - C4
Page - 12E



ASSEMBLE 13461 TO 14058 USING LOCTITE # 271 (RED) TO THREADS. THEN TORQUE TO 45-55 FT. LBS

MAKE CONNECTIONS TO MOTOR IN ACCORDANCE WITH METHOD SHOWN ON MOTOR NAME PLATE. USE CONNECTIONS SHOWN FOR LOWER VOLTAGE FOR 115 VOLTS AND CONNECTIONS SHOWN FOR HIGHER VOLTAGE FOR 230 VOLTS.



INDICATES CHANGE

SERVICE PARTS

| Part | Description | Part | Description | Part | Description |
|-------|-----------------------|---------|------------------------|---------|---------------------------|
| 740 | Control Valve | 45693 | Container Cover | 67117 | Polarized Plug |
| 750 | Hose & Control Valve | 45726 | Follower Washer | 68020 | Locknut |
| 11468 | Guide Pin | 48051 | Washer | 68378 | Pipe Plug |
| 11920 | Stud | 48237 | Washer | 68487 | Wire Terminal |
| 12519 | Fastener Pin | 48244 | Washer | 68556 | Tru-Arc |
| 12538 | Nut | 48400 | Washer | 68560 | Shaft Seal |
| 13190 | Plug | 48431 | Washer | 68561 | Thrust Bearing |
| 13275 | Spacer | 50001 | Cap Screw | 68571 | Wire (23" Lg.) |
| 13365 | Gear | 50006 | Screw | 68572 | Tube Fitting |
| 13461 | Nut | 50016 | Cap Screw | 68657 | Coupling |
| 13466 | Vent Screw | 50018 | Screw | 68658 | Motor |
| 13764 | Spacer | 50030 | Cap Screw | 68661 | Caster |
| 13765 | Rod | 50057 | Screw | 68938 | 90° Box Connector |
| 13766 | Nut | 50058 | Screw | 68940-1 | Flex. Conduit |
| 13773 | Pinion Shaft | 50088 | Screw | 80045 | Safety Unloader |
| 13827 | Handle | 50301-1 | Stove Bolt | 81387 | Universal Swivel |
| 14058 | Connecting Rod | 50607 | Screw | 81791 | Follower Assembly |
| 14062 | Body | 51004 | Nut | 81793 | Container Cover Assembly |
| 14063 | Cap | 51005 | Nut | 83478 | Gear Box Assembly |
| 14064 | Seat | 51010 | Nut | 83480 | Container Assembly |
| 14065 | Adapter | 51022 | Nut | 83482 | Container Assembly |
| 14164 | Check Valve | 51040 | Nut | 83530 | Check Assembly |
| 14922 | Axle | 51060 | Gripco Nut | 90515 | Guide Nut Assembly |
| 15994 | Follower Bushing | 51300 | Nut | 90729 | Strainer Assembly |
| 15995 | Follower Screw | 51422 | Push Nut | 91061 | Follower Washer Assembly |
| 16524 | Outlet Connector | 55135 | Follower Spring | 91062 | Container Cover Assembly |
| 16525 | Outlet Bolt | 55249 | Spring | 91086 | Latch Assembly |
| 31056 | Gasket | 55276 | Spring | 91090 | Crank Assembly |
| 31131 | Gasket | 62121 | Follower Guide Tube | 91092 | Fastener Assembly |
| 31132 | Gasket | 62332 | Tubing | 91663 | Crank Head Assembly |
| 31134 | Gasket | 62934 | Axle Sleeve | 91799 | Bushing & Plunger |
| 33083 | Gasket | 65945 | Nameplate | 91803 | Base Assembly |
| 33094 | Gasket | 65946 | Nameplate | 91804 | Handle Assembly |
| 34193 | Packing | 66042 | Cotter Pin | 91807 | Pressure Switch Adapter |
| 34202 | Follower Gasket | 66051 | Lockwasher | 92037 | Container Assembly |
| 34306 | Packing | 66197 | Cotter Pin | 92042 | Gear Box Assembly |
| 34332 | Shaft Seal | 66201 | Tube Connector | 92068 | Tank Base Washer Assembly |
| 34395 | Tetraseal Gasket | 66266 | Pressure Switch | | |
| 36030 | Follower Leather | 66284 | Large Tool Clip | 236921 | Hose Assembly |
| 40349 | Follower Disc Casting | 66290 | Knob | 360041 | Follower Unit |
| 40489 | Cover Plate | 66296 | Electric Connector | 360231 | Guard |
| 40526 | Reservoir Casting | 66946 | Wheel | | |
| 45641 | Follower Spacer | 66963 | Three Wire Cord (144") | | |
| | | 67044 | Plug | | |

RETAIN THIS INFORMATION FOR FUTURE REFERENCE

When ordering replacement parts, list: Part Number, Description, Model Number, and Series Letter.

LINCOLN provides a Distributor Network that stocks equipment and replacement parts.