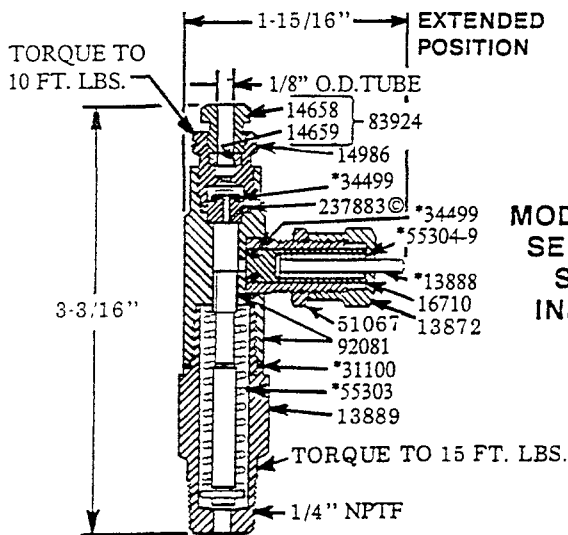
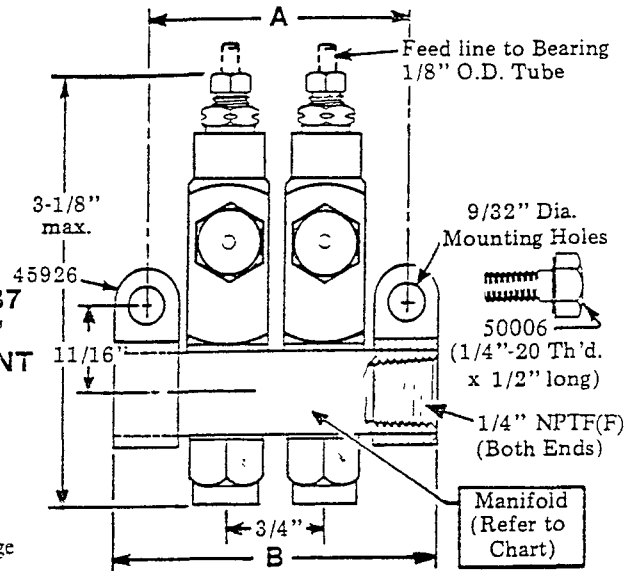
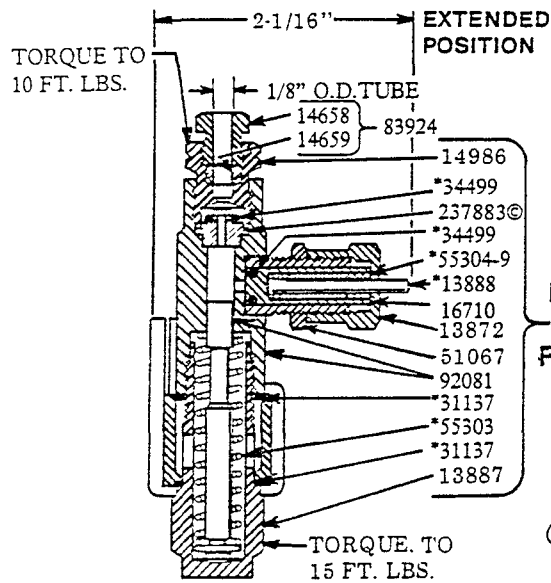


SPECIFICATIONS

- OUTPUT: Adjustable from .001 cu. in. to .008 cu. in.
 OPERATING PRESSURE: 1200 psi to 3500 psi
 † RECOMMENDED OPERATING PRESSURE: ... 1500 psi
 RECHARGE PRESSURE: 200 psi
 For dispensing oil or grease having a consistency not exceeding NLGI grade No. 1.
 May be used in a system with SL-1, SL-11, or SL-33 Injectors.
 † 2500 psi when used in combination with series SL-1 and/or SL-11 Injectors.

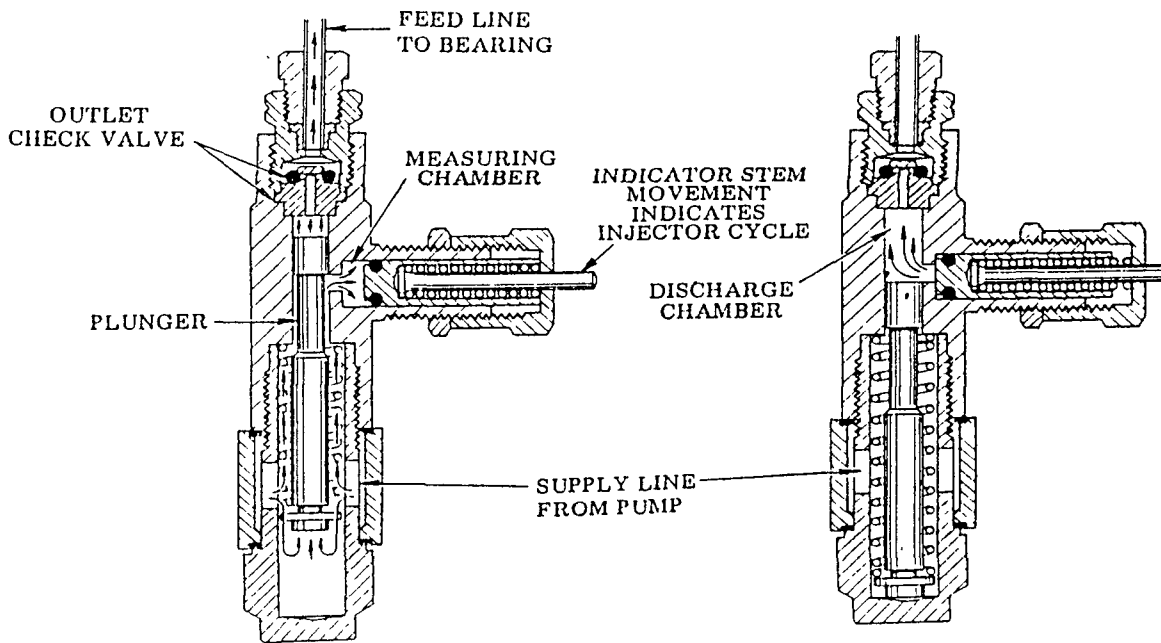
MANIFOLD CHART

Model	Description	Dimensions		Manifold
		A	B	
83336-1	1 Unit	1-1/4"	1-3/4"	91883-1
83336-2	2 Unit	2"	2-1/2"	91884-1
83336-3	3 Unit	2-3/4"	3-1/4"	91885-1
83336-4	4 Unit	3-1/2"	4"	91886-1



Part	Qty.	Description
13872	1	Injector cap
13887	1	Adapter
*13888	1	Injector indicator
13889	1	Injector inlet
14658	1	Compression nut
14659	1	Ferrule
14986	1	Outlet body
237883	1	Check seat
16710	1	Packing retainer
*31100	1	Gasket
*31137	2	Gasket
*34499	2	O-ring
45926	2	Manifold clip
50006	2	Mounting screw
51067	1	Lock nut
*55303	1	Spring
*55304-9	1	Spring
83924	1	Compression nut ass'y.
92081	1	Body & plunger ass'y.

*Included in 236463 Repair kit



OPERATION

SUPPLY LINE UNDER PRESSURE

(Normal operating pressure 1500 psi)

Lubricant pressure moves plunger to force lubricant in the discharge chamber through the outlet check valve to the feed line.

Lubricant from supply line charges the measuring chamber.

SUPPLY LINE VENTED

(Vent pressure 200 psi maximum)

Plunger returns to normal position after supply line is vented, connecting measuring chamber to the discharge chamber. Flow from feed line is blocked by the outlet check valve.

Lubricant is automatically transferred from measuring chamber to discharge chamber.

INJECTOR ADJUSTMENT

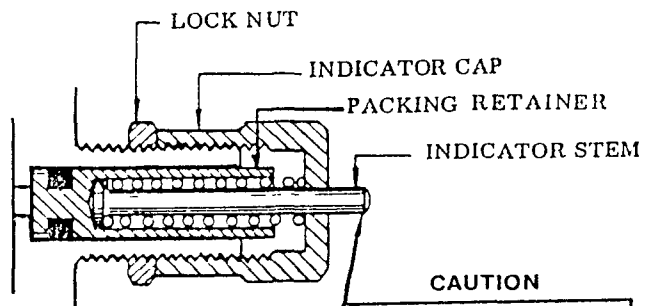
Injector output is controlled by the position of the indicator cap which limits the travel of the packing retainer.

With the indicator cap hand tightened against its stop, the lubricant output is decreased to a minimum.

Retracting the indicator cap five full turns permits a maximum of .008 cu. in. to be dispensed.

Retracting the indicator cap beyond five full turns will not increase the lubricant output.

When the injector has been adjusted for the proper lubricant output, the lock nut is tightened against the face of the indicator cap.



CAUTION

INDICATOR CAP MUST NOT EXTEND BEYOND RETRACTED POSITION OF INDICATOR STEM

RETAIN THIS INFORMATION FOR FUTURE REFERENCE

When ordering replacement parts, list: Part Number, Description, Model Number, and Series Letter.

LINCOLN provides a Distributor Network that stocks equipment and replacement parts.