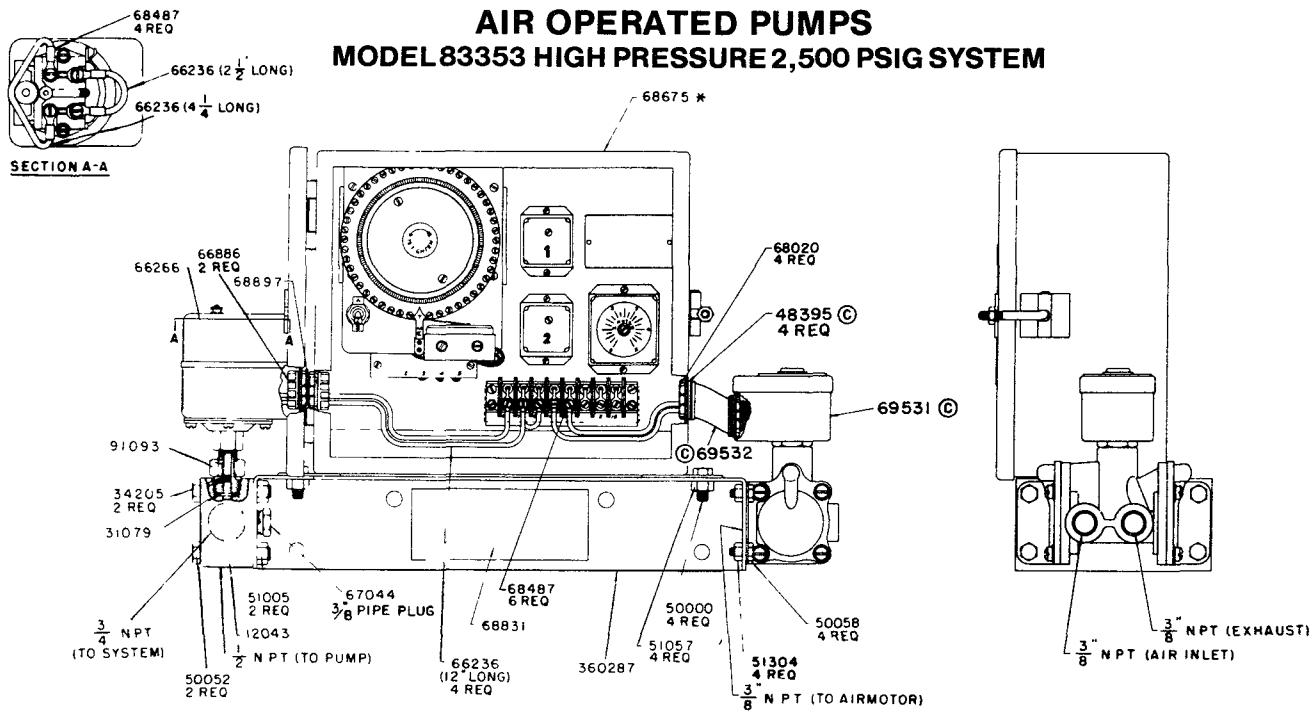
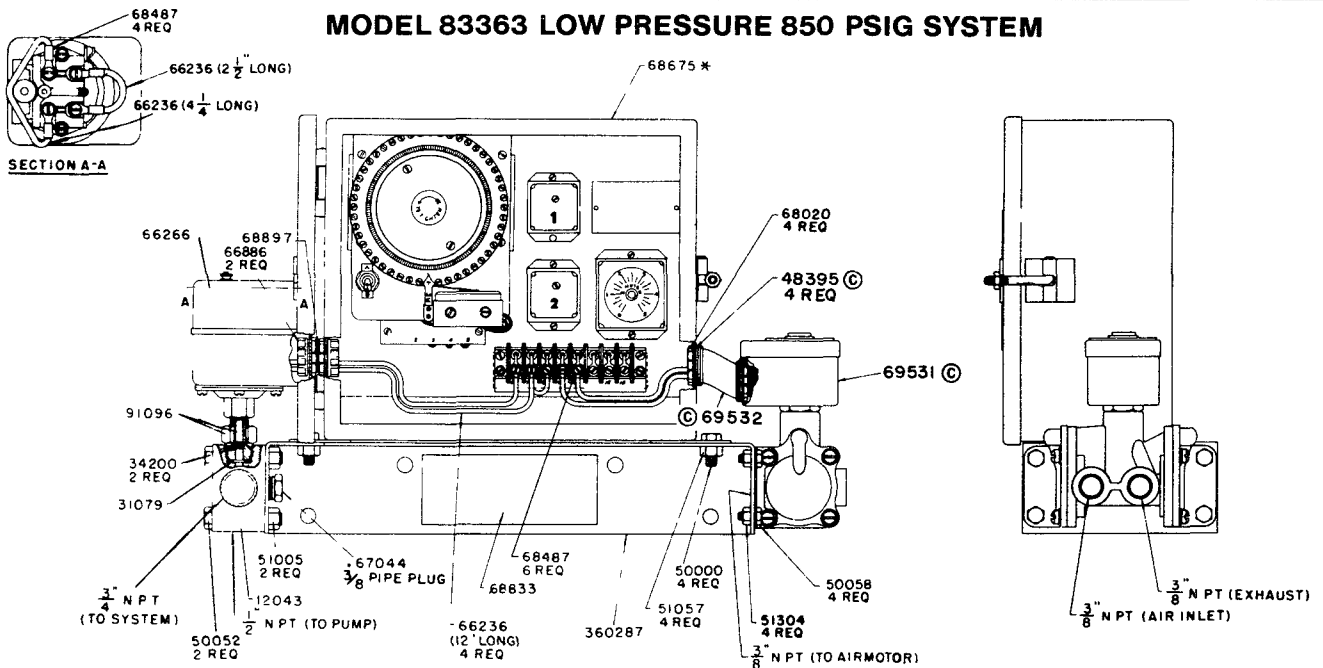


\*68675 Timer— Refer to Section C8, Page 111 Series.

## AIR OPERATED PUMPS MODEL 83353 HIGH PRESSURE 2,500 PSIG SYSTEM



## MODEL 83363 LOW PRESSURE 850 PSIG SYSTEM



\*68675 Timer—Refer to Section C8, Page 111 Series.

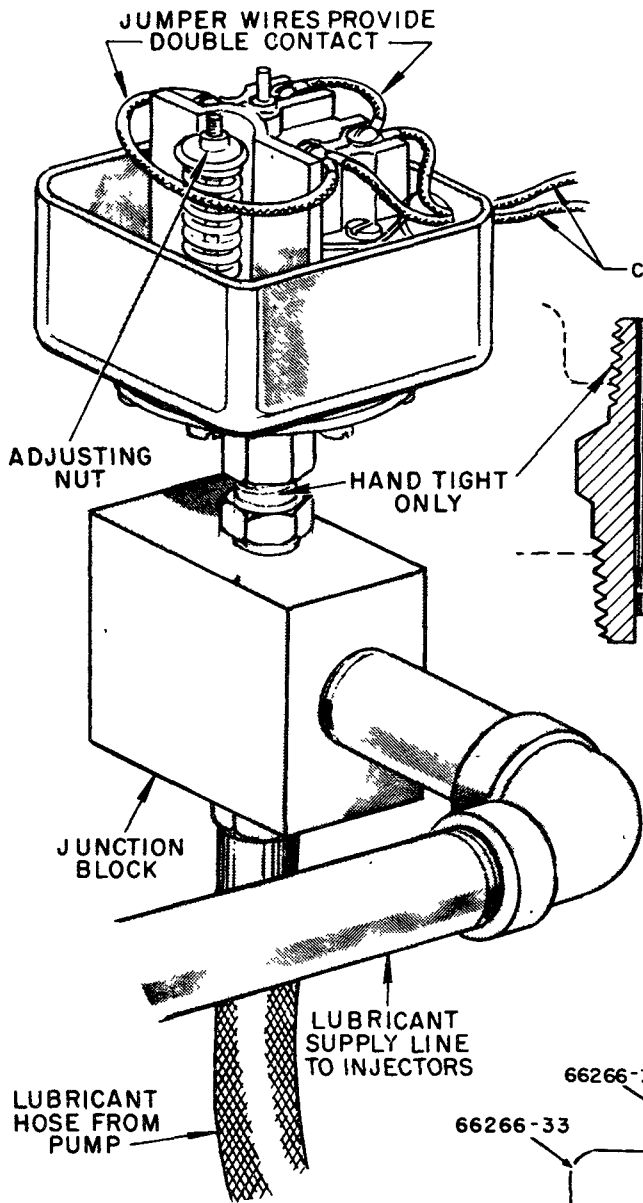
© INDICATES CHANGE

### REPAIR PARTS LIST

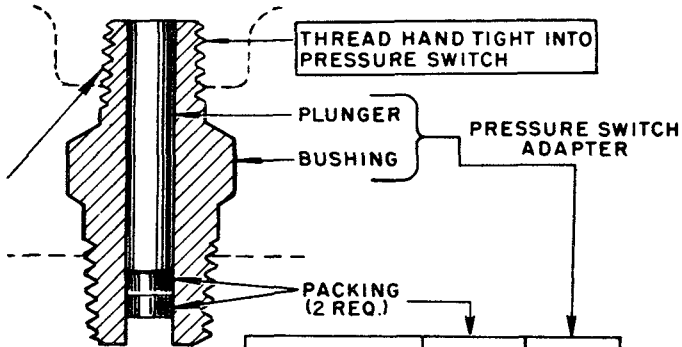
Part	Description	Part	Description	Part	Description
12043	Junction Block	62353	Vent Tube	68555	Adapter Union
20011	Bushing	66236	Wire (2½" Lg.)	68675	Timer
31079	Gasket	66236	Wire (4¼" Lg.)	68812	Stick-Cal
34200	Plunger Packing	66236	Wire (12" Lg.)	68831	Stick-Cal
34205	Plunger Packing	66266	Pressure Switch	68832	Stick-Cal
48218	Washer	66319	Conduit Nipple	68833	Stick-Cal
48395	Washer	66886	Conduit Bushing	68897	Nipple
50000	5/16"-18 Hex Hd Screw	67044	Plug	69531	Solenoid Air Valve
50052	3/8"-16 Hex Hd. Screw	68020	Conduit Lock Nut	69532	Conduit Nipple
50058	1/4"-20 Hex. Hd Screw	68307	Solenoid Vent Valve	91093	Pressure Switch Adapter Assem.
50602	No. 10-32 Screw	68320	Shur Plug	91096	Pressure Switch Adapter Assem.
51005	3/8"-16 Hex Nut	68413	Str. Male Connector	360287	Control Panel Bracket
51057	5/16"-18 Lock Nut	68487	Solderless Wire Terminal	360288	Solenoid Box Cover
51304	1/4"-20 Lock Nut			360289	Solenoid Box

**PRESSURE SWITCH, 66266 (USED WITH ALL MODELS) SEPARATE SETTINGS**

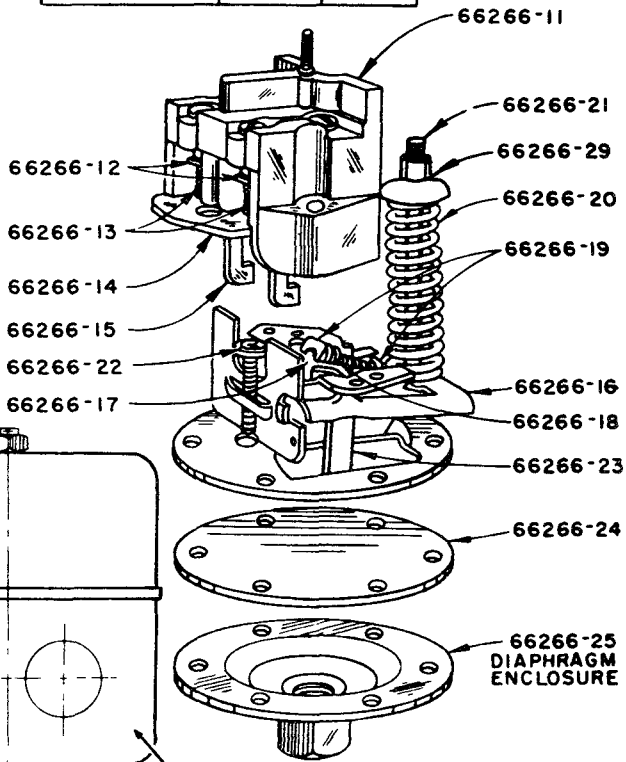
After Injectors discharge lubricant (to the bearings) the Pump continues to Build up Pressure in the Supply Line until sufficient pressure is developed to open Pressure Switch. Opening of Pressure Switch breaks electrical circuit to Solenoid Air Valve (or Electric Vent Valve) to shut off the Pump. At the same time Lubricant pressure opens the Vent Valve (Refer to Engineering Standard CA-3) and allows lubricant to vent back into drum.



CONNECT LEADS TO TIMER TERMINALS 6 8 7.

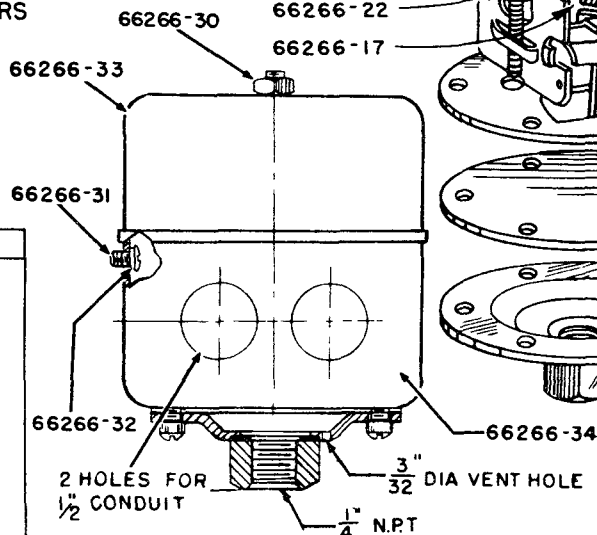


High Pressure	34205	91093
Low Pressure	34200	91096



**REPAIR PARTS LIST**

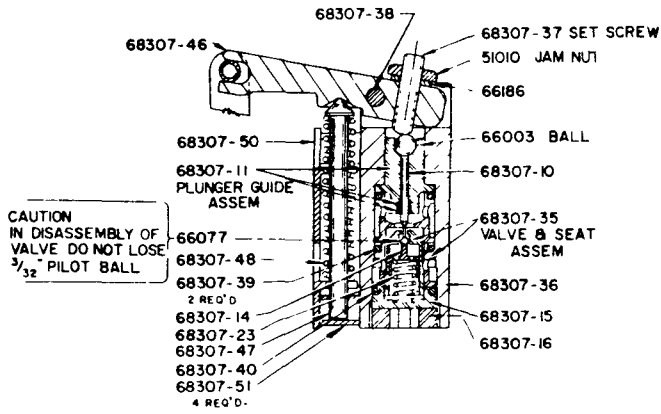
Part	Description
66266-11	Contact Unit, Complete
66266-12	Moveable Contacts
66266-13	Spring
66266-14	Pull Rod Guide
66266-15	Pull Rod
66266-16	Lever
66266-17	Toggle
66266-18	Toggle Spring
66266-19	Toggle Spring Seat
66266-20	Main Spring
66266-21	Post
66266-22	Differential Screw
66266-23	Stirrup Plate
66266-24	Diaphragm
66266-25	Diaphragm Enclosure
66266-29	Nut for Main Spring Adjustment
66266-30	Hex. Nut
66266-31	Ground Screw
66266-32	Lockwasher
66266-33	Cover
66266-34	Case



Pressure Switch is factory set:  
 High Pressure Systems with Adapter - 2,500 PSIG  
 Low Pressure Systems with Adapter - 850 PSIG  
 When necessary, Pressure Switch can be adjusted. To increase pressure, turn Adjusting Nut clockwise.  
 High Pressure Systems with Adapter - 3,500 PSIG Max.  
 Low Pressure Systems with Adapter - 1,000 PSIG Max.  
 To lower the pressure turn Adjusting Nut counter-clockwise.

## 68307 SOLENOID VENT VALVE

**NOTE:**  
IN THE EVENT OF A POWER LOSS,  
REMOVE COVER HOUSING AND  
ACTUATE VALVE MANUALLY

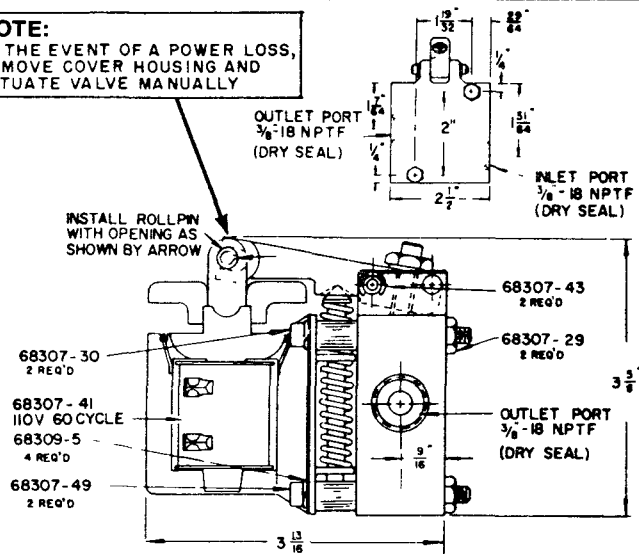


CAUTION  
IN DISASSEMBLY OF  
VALVE DO NOT LOSE  
3/32 PILOT BALL

### AFTER MAKING REPAIRS ADJUSTMENT PROCEDURE

To Re-adjust for proper opening after assembly, hold Solenoid Plunger down by hand. Loosen Jam Nut and turn socket head set screw in until it bottoms; release Solenoid Plunger. Back off set screw until there is clearance between set screw and steel ball. (Minimum 1/3 turn) contact between set screw and ball can be determined by feel when Plunger is depressed slowly by hand. Tighten Jam Nut securely.

INSTALL ROLL PIN  
WITH OPENING AS  
SHOWN BY ARROW

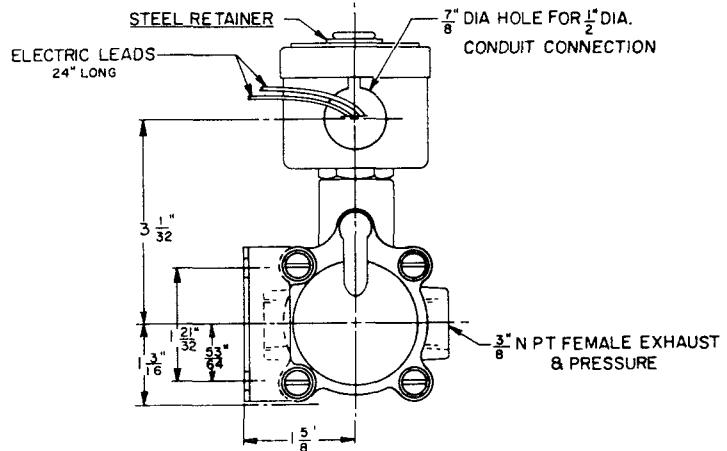
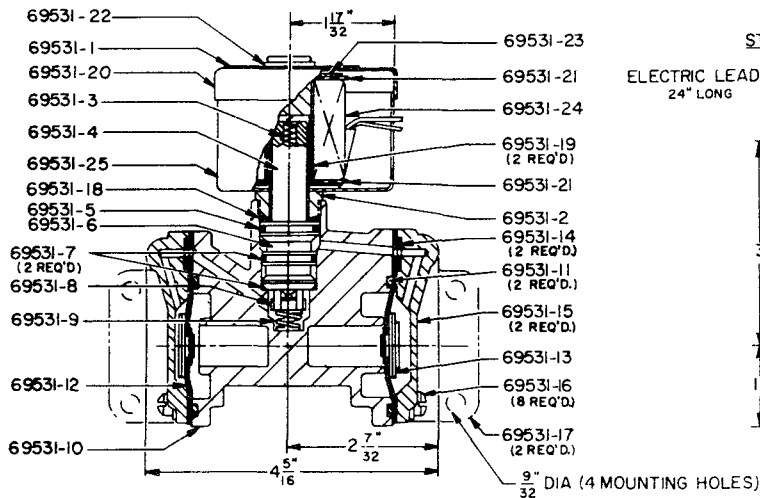


## CLEANING AND MAINTENANCE OF SOLENOID VENT VALVE

- Foreign material may be lodged between the 66077 Ball Check and Ball Check Seat in the 68307-35 Valve and Seat Assembly. Also, foreign material may be preventing 68307-35 Valve and Seat Assembly from sealing properly.
- Replace 68307-39 or 68307-40 O-Rings if worn or damaged.

**NOTE:** If Solenoid Vent Valve fails to operate instantaneous with the Electric Motor, disassemble entire Valve and clean thoroughly. Test Coil before disassembly.

## 69531 SOLENOID AIR VALVE



## REPAIR PARTS LIST

Part	Description	Part	Description	Part	Description
51010	1/4"-20 Hex. Jam Nut	68307-41	Solenoid (110V 60 Cycle)	69531-9	Disc Spring
66003	1/4" Dia. Steel Ball	68307-43	Retaining Ring	69531-10	Body
66077	3/32" Dia. Steel Ball	68307-46	Lever	69531-11	Body Gasket
66186	1/4" Lockwasher	68307-47	Spring Guide	69531-12	Exhaust Diaphragm Assembly
68307-10	Rod	68307-48	Spring	69531 13	Pressure Diaphragm Assembly
68307-11	Plunger Guide Assembly	68307-49	No 10-24 Socket Hd. Cap Screw	69531-14	Bonnet Gasket
68307-14	Spring Guide	68307-50	Plate	69531-15	Bonnet
68307-15	Retainer	68307 51	Spacer	69531-16	Sems Screws
68307-16	Screw	68309-5	No 10 Lockwasher	69531-17	Mounting Bracket
68307-23	Spring	69531 1	Name Plate	69531-18	Gasket Solenoid Base
68307-29	No 10-24 Hex Nut	69531 2	Solenoid Base	69531 19	Sleeve
68307-30	No 10-24 Socket Hd Cap Screw	69531-3	Spring Core	69531 20	Cover
68307-35	Valve & Seat Assembly	69531-4	Core Assembly	69531 21	Insulating Washer
68307-36	Body Block	69531-5	Upper Gasket	69531 22	Retaining Ring
68307-37	1/4"-20 Socket Hd Set Screw	69531 6	Insert	69531 23	Yoke
68307-38	Pin	69531-7	Lower Gasket	69531 24	Coil
68307-39	O-Ring Packing	69531 8	Disc Holder Assembly	69531-25	Housing
68307-40	O-Ring Packing				