

MANUALLY OPERATED PUMPS

Models 83742 83817

RESERVOIR CAPACITY - 40 CU. IN.

To:

Series "B"

MODEL	LUBRICANT OUTPUT	PRESSURE INDICATOR
83742 (OIL)	*0.36 cu. in. per stroke	83818 (1,000 psi, factory set)
83817 (GREASE)	*0.1 cu. in. per stroke	83821 (2,500 psi, factory set)

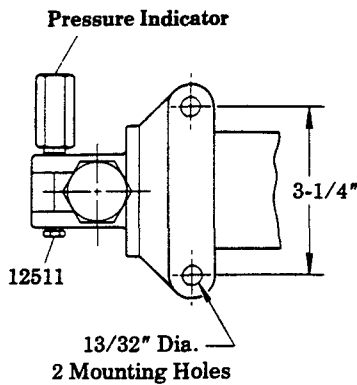
DESCRIPTION

Models 83742 and 83817 are manually operated multi-stroke pumps used as the pumping unit for a centralized lubrication system on small machines. System should not be large due to small reservoir capacities. Pump should be located on machine or wall for convenience of filling and operating.

*Based on lubricants that are free of entrapped air. Lubricants that are specifically aerated will reduce output of pump.

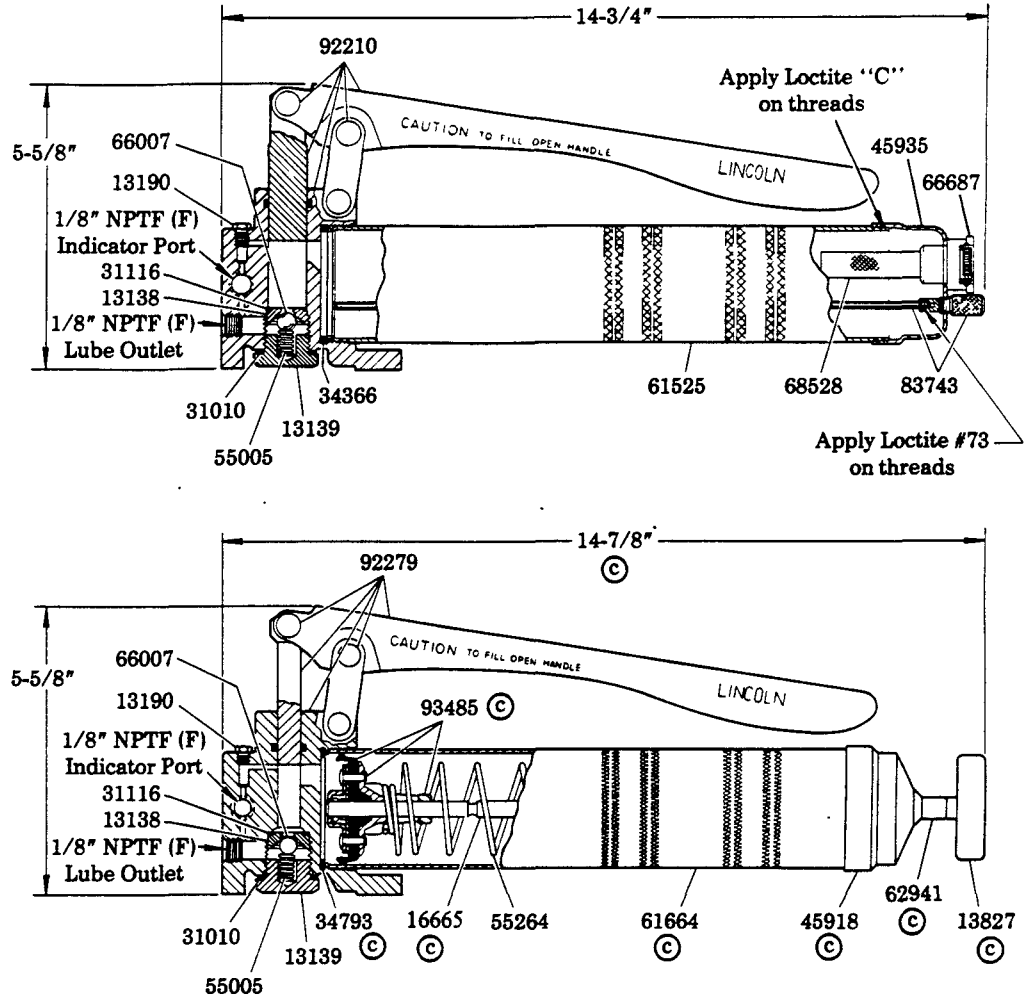
Model 83742

(FOR OIL - Must be mounted vertically.)



Model 83817

(FOR GREASE)



(C) Indicates change

SERVICE PARTS

PART	DESCRIPTION	PART	DESCRIPTION	PART	DESCRIPTION	PART	DESCRIPTION
12511	Pipe plug	31010	Gasket	55005	Spring	66687	Oil hole cover
13138	Check seat	31116	Gasket	55264	Spring	68528	Strainer
13139	Check cap	34366	Packing	61525	Container tube	83743	Oil gauge
13190	Plug	34793	Packing	61664	Container tube	92210	Handle & plunger assembly
13827	Follower handle	45918	Tube cap	62941	Spacer	92279	Handle & plunger assembly
16665	Follower rod	45935	Tube cap	66007	Ball	93485	Follower assembly

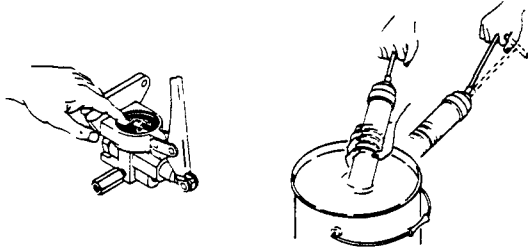
LINCOLN

LINCOLN, One Lincoln Way
St. Louis, Missouri 63120-1578
(314) 679-4200

SECTION - C8
PAGE - 134A

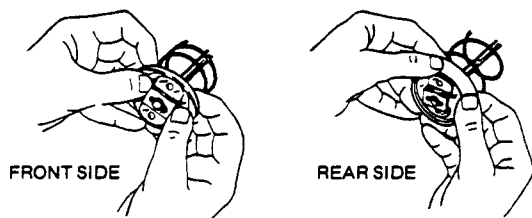
TO FILL GREASE PUMP FROM BULK LUBRICANT CONTAINER

- 1) Remove container tube from head and plunger assembly.
- 2) Pack lubricant into cavity of the head and plunger assembly.
- 3) Insert the open end of the container tube into lubricant. Slowly pull the follower handle back while pushing the container tube deeper into the lubricant to prevent air pockets from being pulled into the container tube.
- 4) When the follower rod is fully extended, pull it sideways to latch the rod groove into the keyhole slot in the container cap.
- 5) Loosely assemble the filled container tube to the head and plunger assembly. Release the follower rod from the container cap and disengage the follower rod from the follower by rotating the follower handle. Push the follower rod into the container. Slowly unscrew the container tube from the head and plunger assembly until lubricant oozes from the interface. Tighten container tube into the head and plunger assembly.



TO CONVERT GREASE PUMP FROM BULK FILL TO CARTRIDGE LUBRICANT

- 1) Unscrew the container cap from the container tube. Pull on the follower handle to extract the follower and spring from the container tube.
 - 2) Grasp follower between thumb and forefinger and flip the follower lip from the front side to the rear.
- NOTE:** The follower resembles a cup. When the grease pump is assembled for use with bulk lubricant, the cup opens toward the head assembly.
- 3) Reassemble follower into container tube and position with the follower handle so that the container cap can be tightened onto the container tube.



OPERATION

CENTRO-MATIC

Manually operated multi-stroke pumps will continue to dispense lubricant and build up pressure with each stroke of the pump handle, within pumping range. Pressure indicator will extend when sufficient pressure is reached to operate the Centro-Matic system (Model 83742 - 1,000 psi or Model 83817 - 2,500 psi). Lubricant pressure operates the injectors which dispense a measured amount of lubricant into the bearings.

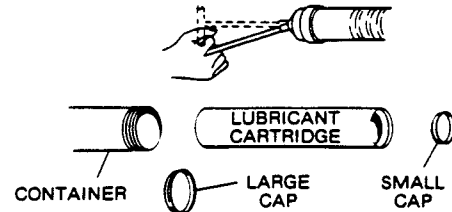
Return pump handle to venting position. System pressure vents back into reservoir and injectors recharge for next lube cycle.

MODULAR LUBE

Manually operated multi-stroke pumps will continue to dispense lubricant with each stroke of the pump handle (handle must remain within pumping range). Operate the pump handle until cycle indicator pin on divider valve indicates lube cycle is complete. Disregard pressure indicator on pump.

TO INSTALL A LUBRICANT CARTRIDGE IN GREASE PUMP

- 1) Remove container tube from head and plunger assembly.
- 2) To remove an empty cartridge, pull back on the follower handle until the follower rod is fully extended. Then, carefully release the follower handle to eject the empty cartridge from the container tube. Pull back on the follower handle. When the follower rod is fully extended, pull it sideways to latch the rod groove into the keyhole slot in the container cap.



- 3) Remove the caps from both ends of the cartridge and insert the large open end of the cartridge into the container tube.
- 4) Loosely assemble the container tube to the head and plunger assembly. Extend the pump handle away from the container tube and disengage the follower rod from the container cap. Engage the follower rod with the follower by rotating the follower handle. Exert force on the follower handle until lubricant oozes from the tube and head interface. Tighten container tube into the head and plunger assembly.
- 5) Disengage the follower rod from the follower by rotating the follower handle. Push the follower rod into the container.

TO EXPEL AIR POCKETS

- 1) Unscrew the container tube 1-1/2 turns from the head and plunger assembly.
- 2) Withdraw the follower rod from the container cap and engage it with the follower by rotating the follower handle. Exert force on the follower handle until lubricant oozes from the tube and head interface.
- 3) Tighten container tube into the head and plunger assembly. Disengage the follower rod from the follower by rotating the follower handle. Push the follower rod into the container.

IMPORTANT

Air pockets in the cartridge lubricant will cause the grease pump to lose its prime.

TO FILL OIL PUMP

Oil pump is filled through the spring-loaded oil filter cap. A dip stick is provided to indicate the oil level.

