

SEMI-AUTOMATIC CONTROL ASSEMBLY



Model 83847

DESCRIPTION

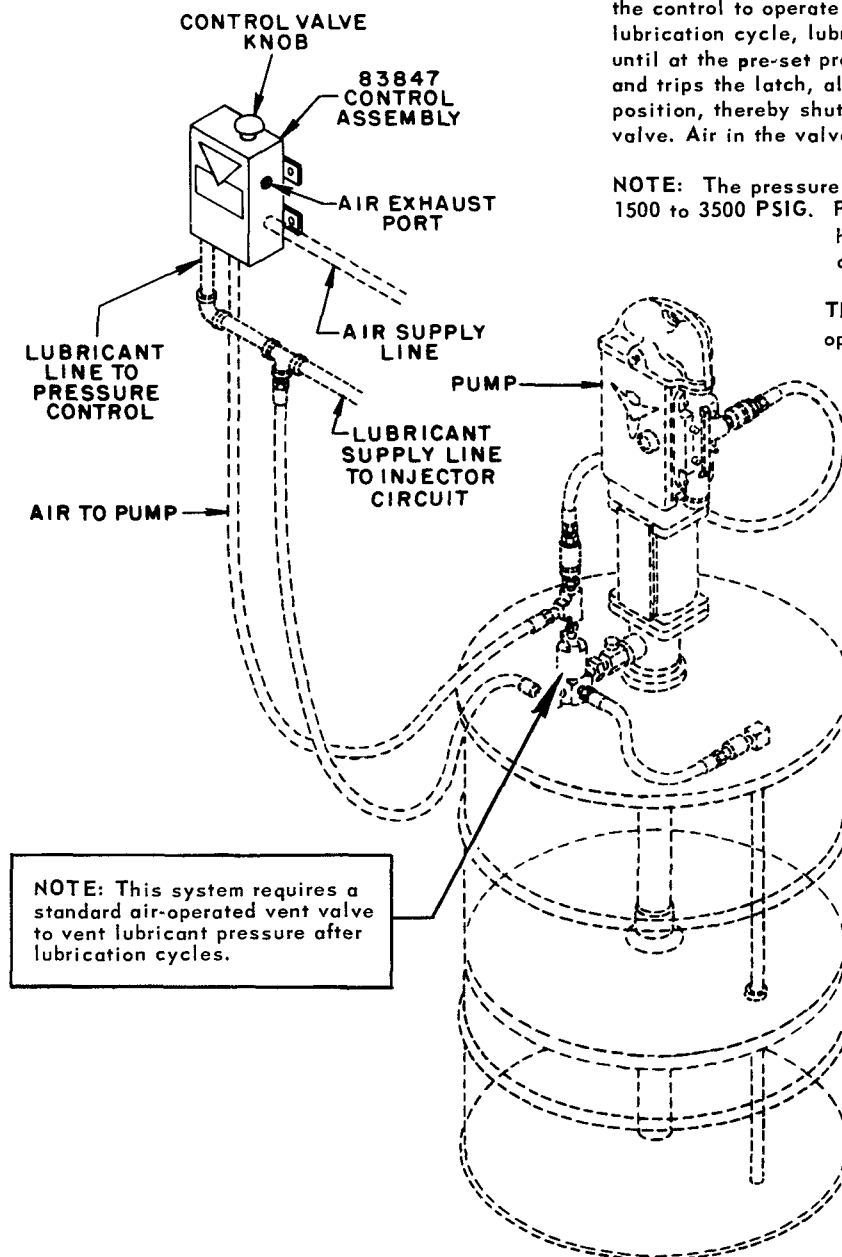
The Model 83847 Control Assembly is a semi-automatic, manually timed, automatically controlled pneumatic pump control incorporating a three-way valve and an adjustable pressure sensitive latching system. This control does not require electrical current for its operation and can be used in damp atmospheres where electrical controls could provide electrical shock to the operator or in a potentially explosive atmosphere because of the absence of electrical sparking. Application for the 83847 Control Assembly would be for a Centro-Matic Lubrication System or any system designed to pump lubricant to a given pressure (factory set between 2300 to 2700 PSIG) and then shut down the air supply to the pump. A typical application is illustrated below :

OPERATION

The Control Assembly is actuated by depressing the control valve knob to the down position until it latches in place. This closes the air exhaust port and opens the air inlet port, allowing air to pass through the control to operate the pump and close the vent valve. After lubrication cycle, lubricant pressure in system continues to build up until at the pre-set pressure, the plunger in the pressure control moves and trips the latch, allowing the control valve knob to return to the up position, thereby shutting off the air to the pump and opening the vent valve. Air in the valve exhausts through the air exhaust port.

NOTE: The pressure control is adjustable through a hydraulic range of 1500 to 3500 PSIG. Pressure adjustment is made by turning the 13462 housing clockwise to increase pressure or counter-clockwise to decrease pressure.

The Model 83847 Control Assembly should not be operated at air pressure in excess of 150 PSIG.



SERVICE PARTS

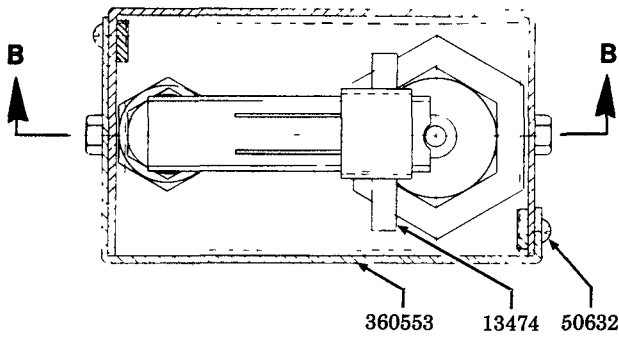
PART	QUAN.	DESCRIPTION
12360	1	Spacer
12817	3	Packing spacer
12818	2	Packing retainer
13448	1	Spring guide
13462	1	Housing
13464	1	Pin
13465	1	Nut
13474	1	Pin
13499	1	Pressure control body
14785	1	Valve body
14786	1	Valve stem
14787	1	Valve plunger
14788	1	Adapter
34110	3	Plunger packing
41200	1	Knob
50131	3	Screw
50524	1	Set screw
50632	4	Screw
55317	1	Spring
56117	1	Spring
57125	1	Torsion spring
67054	1	Street ell
67272	1	Nozzle tube
67340	1	Pipe coupling
90924-2	1	Packing assembly
92489	1	Box assembly
360552	1	Latch
360553	1	Panel box cover

LINCOLN ST. LOUIS
4010 GOODFELLOW BLVD. • ST. LOUIS, MO. 63120 • (314) 383-5900

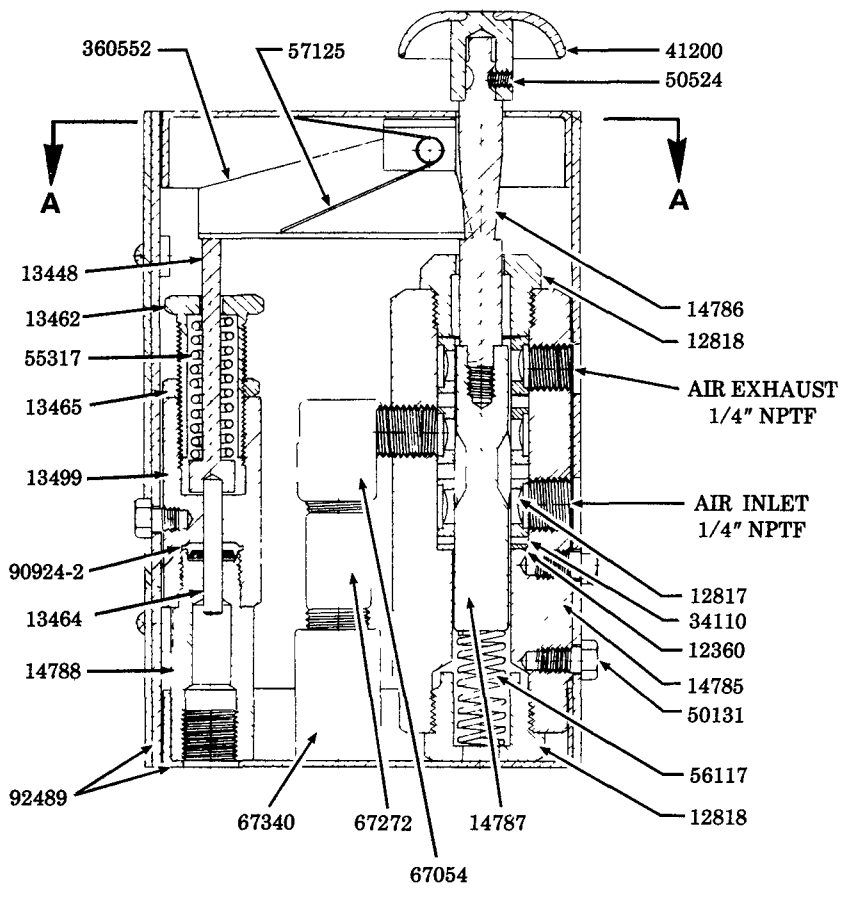
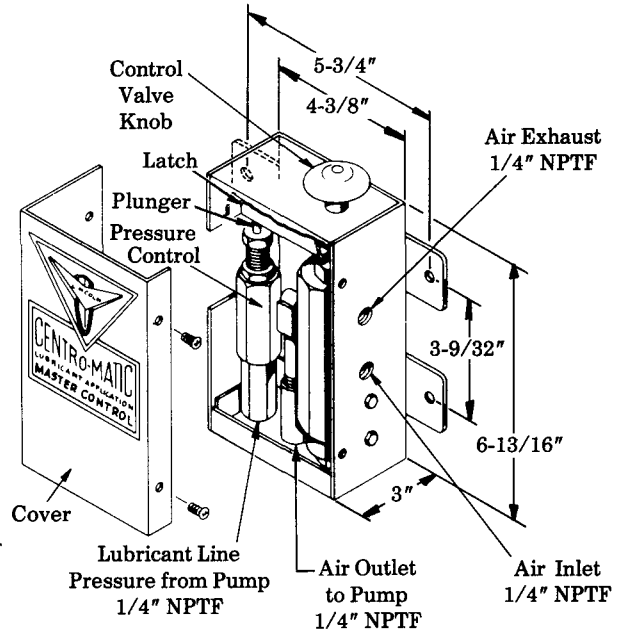
A DIVISION OF
McNEIL
CORPORATION

SECTION - **C8**

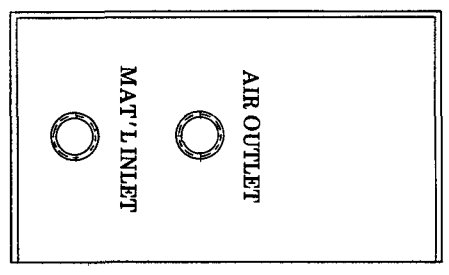
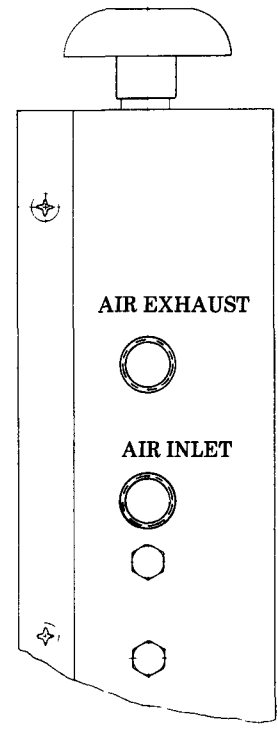
PAGE - **137A**



SECTION A-A



SECTION B-B



RETAIN THIS INFORMATION FOR FUTURE REFERENCE

When ordering Replacement Parts, List Part Numbers, Description, Model Number, and Series Letter.

LINCOLN ST. LOUIS Provides a Distributor network that stocks Equipment and Replacement Parts.

Repairs by Authorized Service Depts. List furnished upon request.