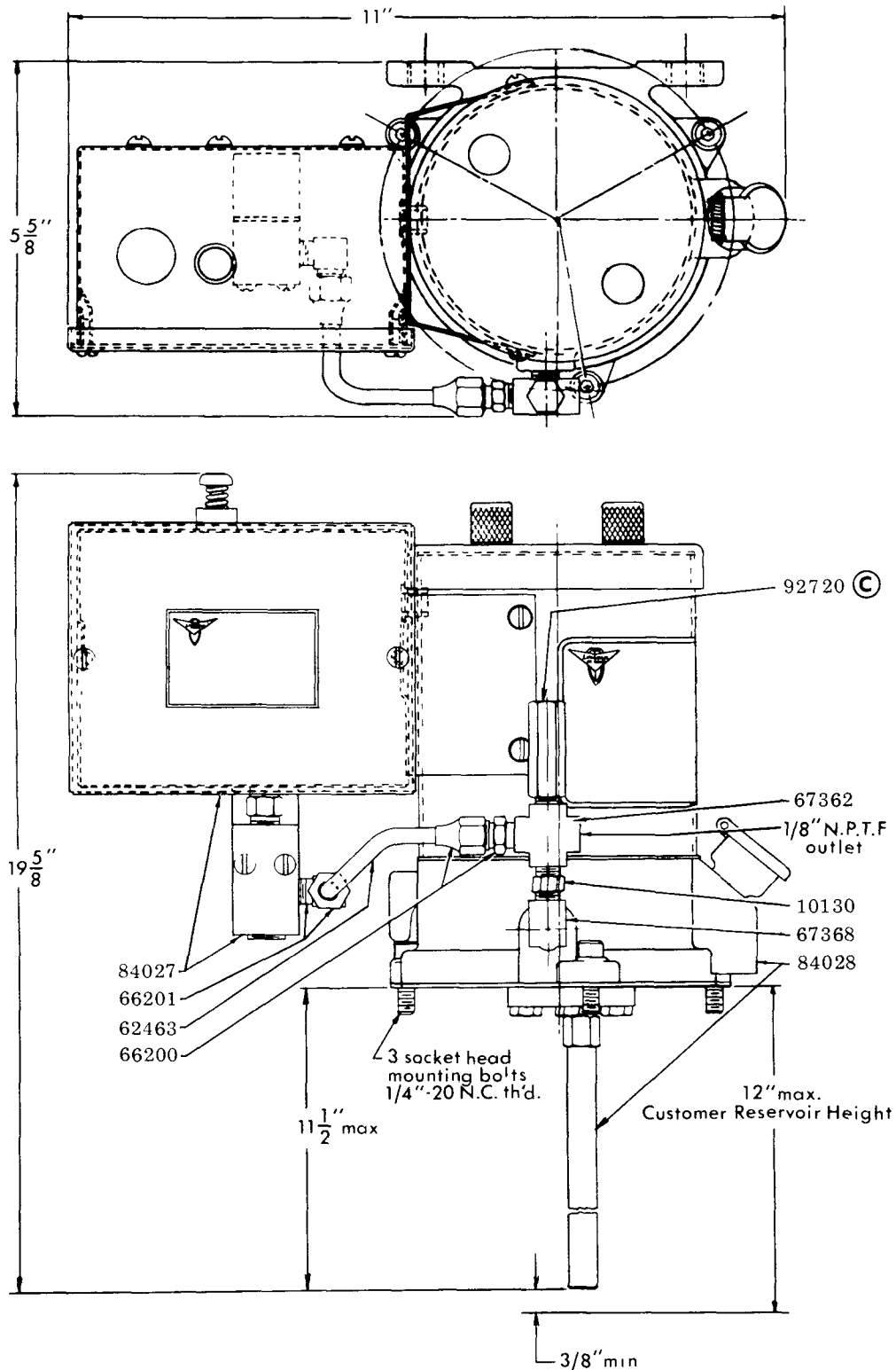
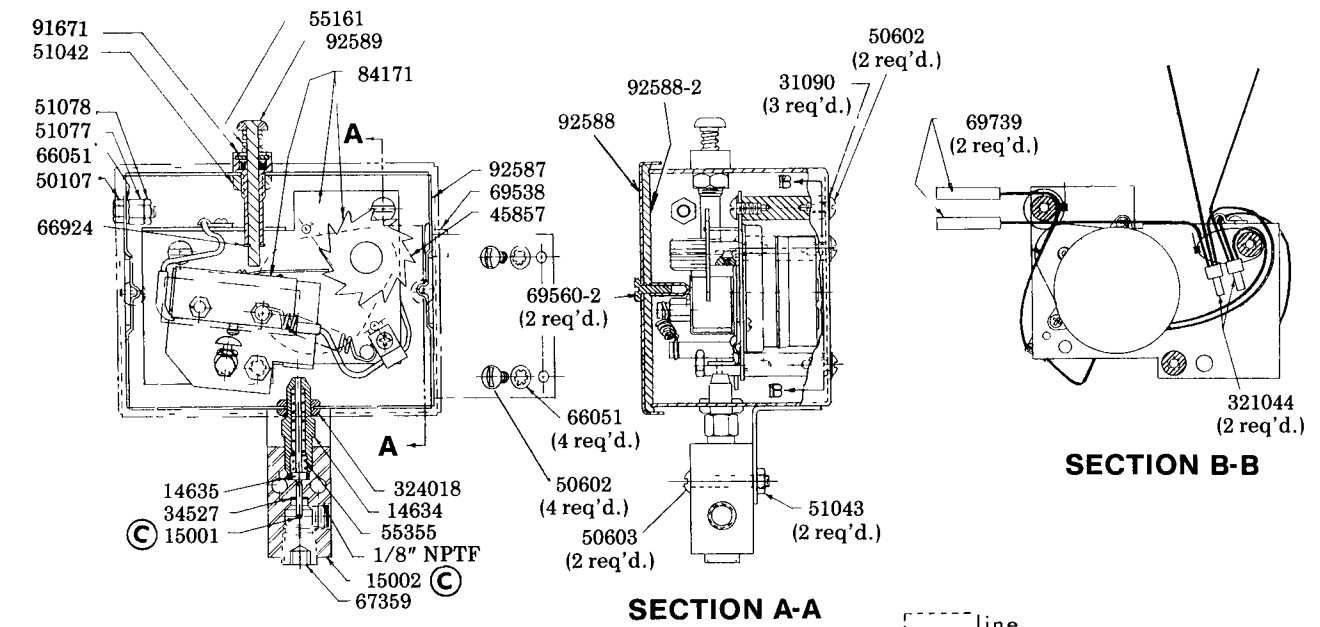
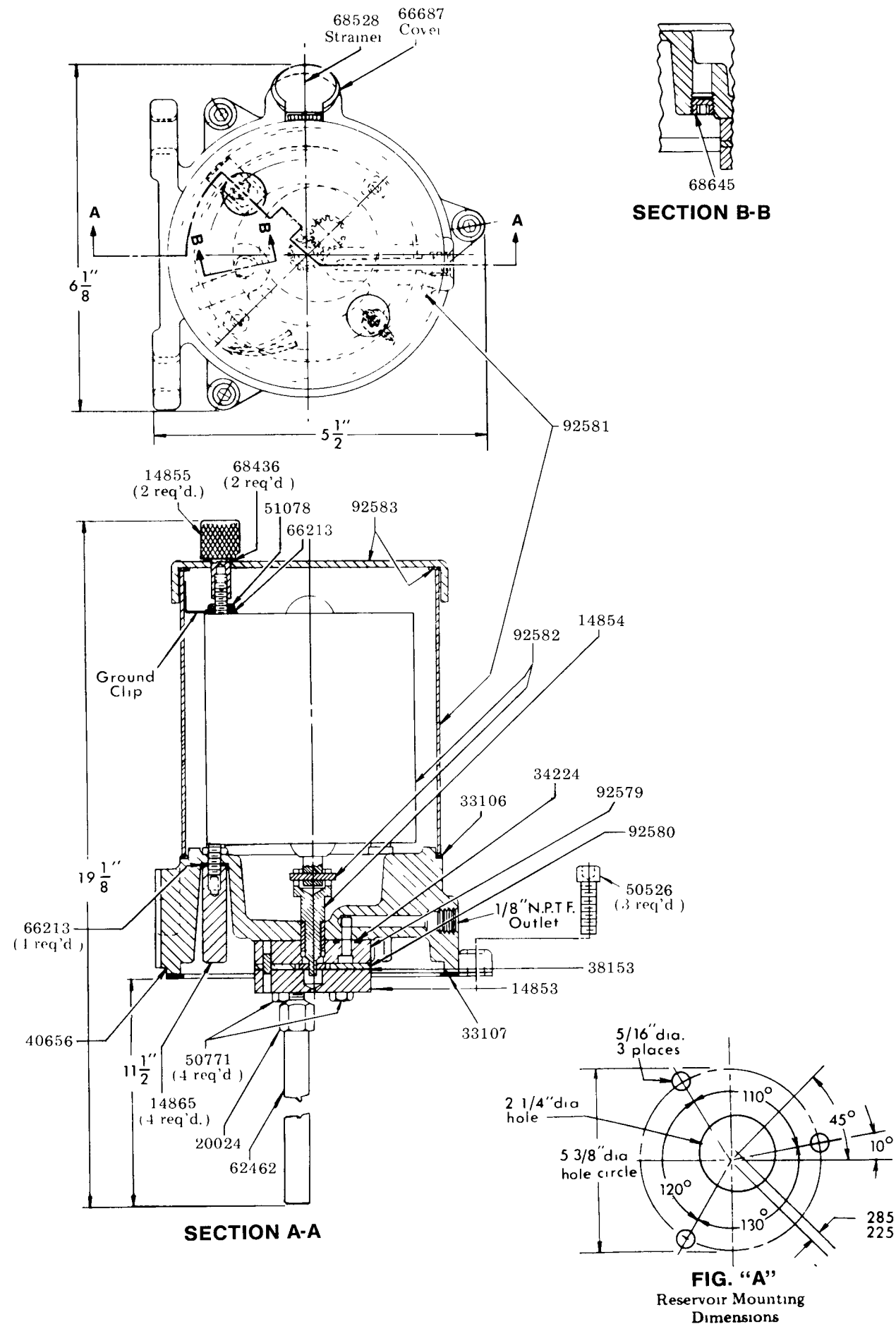


(WITHOUT RESERVOIR)



© Indicates change



Code	Description
TM	Timer Motor
TS	Timer Switch
TC	Thermal Cut-Out
M	Pump Motor

DESCRIPTION

Model 84021 Gear Pump Assembly basically consists of an electric gear pump assembly and a cycle timer with an integral pressure switch. This pump assembly requires a 115V, 60 Hz power source and is designed to cycle a low pressure, 1000 psig Centromatic Injector System with a cycle period of not less than five nor more than sixty minutes. The gear pump is mounted on top of a bulk reservoir with three 1/4" dia. bolts thru bosses on the pump body. Refer to fig "A" for mounting hole configuration required in the reservoir top.

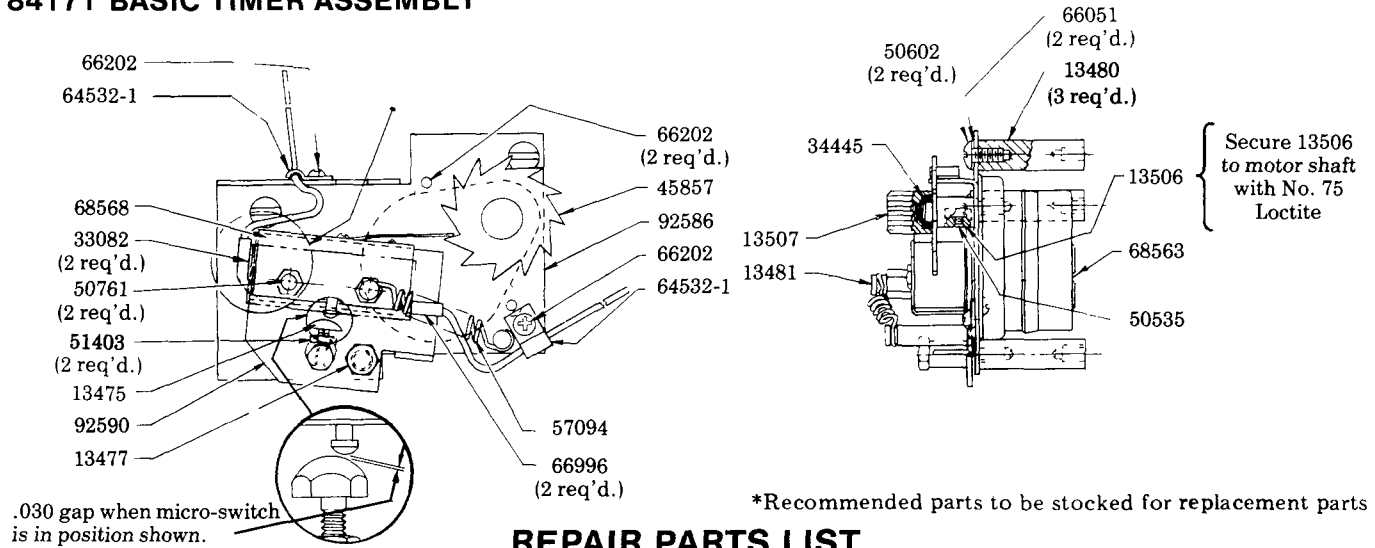
OPERATION

At an interval determined by lubrication requirements, the gear pump is actuated by the cycle timer. The gear pump builds pressure in the lubricant supply line, cycling the injectors. The gear pump continues to increase line pressure until the cycle timer pressure switch trips at approximately 1,000 psig, stopping the gear pump. The line pressure decreases, due to the lubricant by passing the pump gears and returning to the reservoir. When the pressure is decreased sufficiently, the injectors reset and are ready for the next lubrication cycle. If the 92720 safety unloader should leak during the pumping period, tighten the set screw slightly to adjust the maximum allowable pressure.

SPECIFICATIONS

	Cycle Interval	Pumping Period	Output
Lubrication Cycle Intervals	5, 10, 15, 20, 30 or 60 minutes		
Maximum Pumping Time per Cycle			
	5 minutes	20 seconds	3 cu in
	10 minutes or greater	40 seconds	6 cu in
Lubricant Pressure Developed	875-1,200 psig		
Allowable Lubricant Viscosity	500-50,000 Saybolt Universal Seconds		

84171 BASIC TIMER ASSEMBLY



REPAIR PARTS LIST

Part No.	Description	Part No.	Description
10130	Nipple	57094	Spring
13475	Screw	62462	Pipe
13477	Bolt	62463	Tube
13480	Spacer	64532-1	Tube Clip
13481	Nut	66051	Lockwasher
13506	Cam Shaft	66200	Male Tube Connector
13507	Knob	66201	90° Male Tube Connector
14634	Indicator Housing	66202	Self-Tapping Screw
14635	Actuator Pin	66213	Lockwasher
* 14853	Wear Plate (inlet)	66687	Hole Cover
14854	Shaft Adapter	66924	Tru Arc
14855	Motor Nut	66996	Insulator
14865	Elongated Nut	67359	Plug
15001	Pin	67362	Cross
15002	Indicator Body	67368	Street Elbow
20024	Bushing	68436	Lockwasher
31090	Gasket	68528	Strainer
33082	Insulator	* 68563	Timer Motor
* 33106	Gasket	* 68568	Micro-Switch
33107	Gasket	68645	Plug
* 34224	O Ring	69538	Snap Bushing
34445	Gasket	69560-2	Self-Tapping Screw
* 34527	O-Ring	84027	Timer Assembly
* 38153	Shim	84028	Gear Pump
40656	Body	84171	Basic Timer Assembly
* 45857	Cam	91671	Bushing Assembly
50107	Screw	* 92579	Wear Plate (outlet)
50526	Socket Hd Cap Screw	* 92580	Gear Housing Assembly
50535	Screw	92581	Cover Assembly
50602	Screw	* 92582	Motor Assembly
50603	Screw	92583	Top Cover Assembly
50761	Screw	92586	Panel Assembly
50771	Screw	92587	Box Assembly
51042	Nut	92588	Cover Gasket Assembly
51043	Nut	92588-2	Cover Gasket
51077	Nut	92589	Rod Assembly
51078	Nut	92590	Sleeve and Plate
51403	Nut	* 92720	Safety Unloader
55161	Spring	* 324018	Grommet
* 55355	Spring		

RETAIN THIS INFORMATION FOR FUTURE REFERENCE

When ordering replacement parts, list: Part Number, Description, Model Number, and Series Letter.

LINCOLN provides a Distributor Network that stocks equipment and replacement parts.