

GEAR PUMP ASSEMBLY

(WITHOUT RESERVOIR)

Model 84023

Series "B"

DESCRIPTION

The 84023 Gear Pump Assembly requires a 115 V., 60 Hz. power source and is designed to cycle a low pressure, 1000 psig Centro-matic Injector System

A five minute minimum cycle period is required to insure adequate lubricant pressure venting.

The gear pump is mounted on top of a bulk reservoir with three 1/4" dia. bolts thru bosses on the pump body. Refer to fig. "A" for mounting hole configuration required in the reservoir top.

OPERATION

When the 84023 Gear Pump is used in conjunction with a timer, reservoir and pressure switch, the system operates in the following manner:

At an interval determined by lubrication requirements, the gear pump is actuated by the cycle timer.

The gear pump builds pressure in the lubricant supply line, cycling the injectors. The gear pump continues to increase line pressure until the cycle timer pressure switch trips at approximately 1,000 psig, stopping the gear pump.

The line pressure decreases, due to the lubricant bypassing the pump gears and returning to the reservoir. When the pressure is decreased sufficiently, the injectors reset and are ready for the next lubrication cycle.

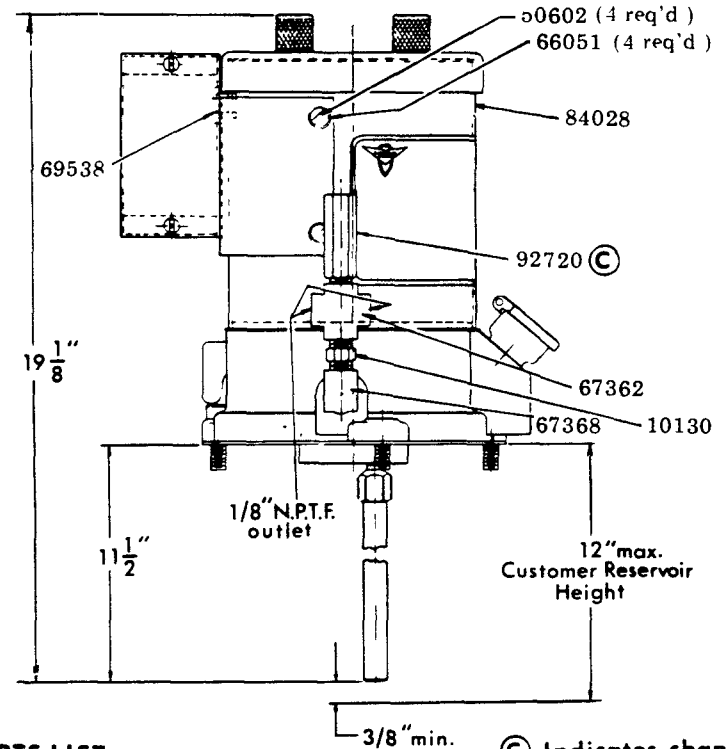
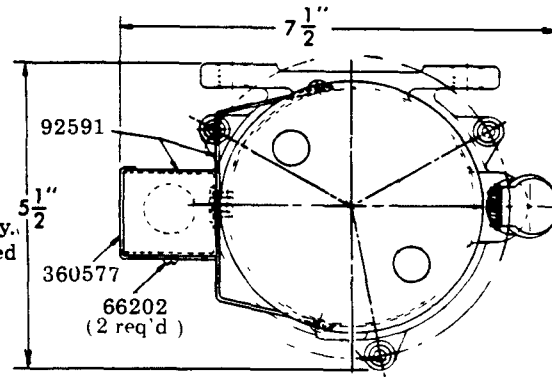
If the 92720 safety unloader should leak during the pumping period, tighten the set screw slightly to adjust the maximum allowable pressure.

SPECIFICATIONS

Maximum Pumping Time per Cycle:

Cycle Interval	Pumping Period	Output
5 minutes	20 seconds	3 cu. in.
10 minutes or greater	40 seconds	6 cu. in.

Lubricant Pressure Developed . . . 1,200 psig maximum
 Allowable Lubricant Viscosity . . . 500-50,000 Saybolt Universal Seconds



REPAIR PARTS LIST

PART NO.	DESCRIPTION	PART NO.	DESCRIPTION	PART NO.	DESCRIPTION
10130	Nipple	50602	Screw	68528	Strainer
* 14853	Wear Plate (inlet)	50771	Screw	68645	Plug
14854	Shaft Adapter	51078	Hex. Nut	69538	Snap Bushing
14855	Motor Nut	62462	Pipe	84028	Gear Pump
14865	Elongated Nut	66051	Lockwasher	* 92579	Wear Plate (outlet)
20024	Bushing	66202	Self-Tapping Screw	* 92580	Gear Housing Assembly
* 33106	Gasket	66213	Lockwasher	92581	Cover Assembly
33107	Gasket	66687	Hole Cover	* 92582	Motor Assembly
* 34224	O-Ring	67362	1/8" N.P.T.F. Cross	92583	Top Cover Assembly
* 38153	Shim	67368	Street Elbow	92591	Conduit Fox Assembly
40656	Body	68436	Lockwasher	* 92720	Safety Unloader Assembly
50526	Socket Hd. Cap Screw			360577	Cover

*Recommended parts to be stocked for replacement parts.



LINCOLN, One Lincoln Way
 St. Louis, Missouri 63120-1578
 (314) 679-4200 Customer Service, (314) 679-4300

SECTION- **C8**
 PAGE- **147A**