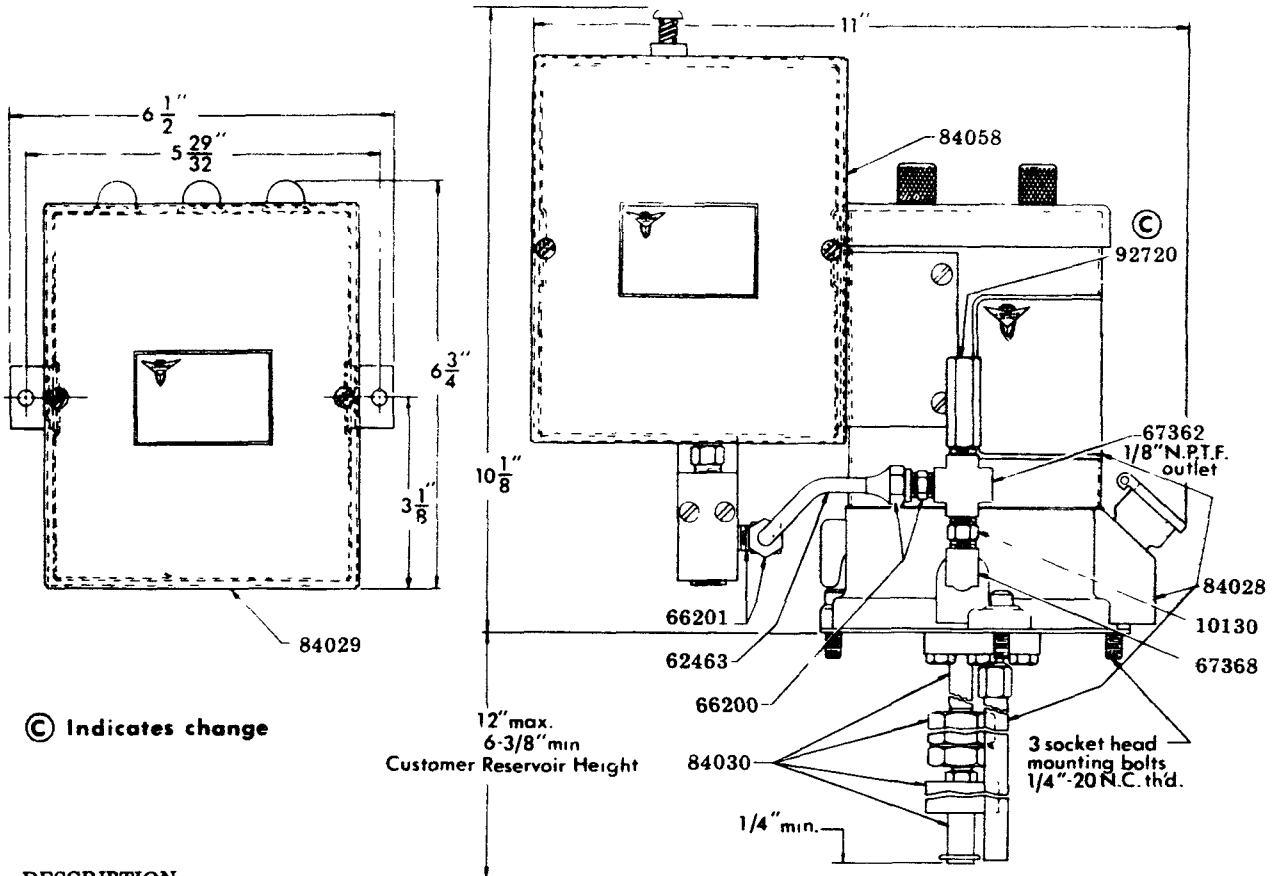


DELUXE GEAR PUMP ASSEMBLY (WITHOUT RESERVOIR)

Model 84025

Series "B"



© Indicates change

DESCRIPTION

Model 84025 Deluxe Gear Pump Assembly basically consists of: An electric gear pump assembly with a low level switch assembly, a cycle timer with an integral pressure switch, and a running light assembly to monitor the system

This pump assembly requires a 115 V., 60 Hz. power source and is designed to cycle a low pressure, 1000 psig, Centromatic Injector System with a cycle period of not less than five or more than sixty minutes. The gear pump is mounted on top of a bulk reservoir with three 1/4" dia. bolts thru bosses on the pump body. Refer to fig. "A" for mounting hole configuration required in the reservoir top

OPERATION

At an interval determined by lubrication requirements, the gear pump is actuated by the cycle timer.

The gear pump builds pressure in the lubricant supply line, cycling the injectors. The gear pump continues to increase line pressure until the cycle timer pressure switch trips at approximately 1,000 psig, stopping the gear pump.

The line pressure decreases, due to the lubricant by-passing the pump gears and returning to the reservoir. When the pressure is decreased sufficiently, the injectors reset and are ready for the next lubrication cycle.

Three lights on the running light assembly monitor the gear pump assembly. A green light indicates that there is electric power to the cycle timer. An amber light indicates the pumping period and a red light indicates either a low fluid level or a system failure.

A low level switch turns on the red light a short time before the reservoir is completely out of lubricant. Rule 1 When the green and red light are on simultaneously, lubricant should be added to the reservoir

When the reservoir is completely out of lubricant, the gear pump will run dry for approximately one minute before a time delay relay will shut off the pump with the green, amber and red lights on. Rule 2 When the green, amber and red lights are on simultaneously, either the reservoir is completely out of lubricant or there has been a system failure (pressure leak, pump malfunction, etc.). When this occurs, the pump will not operate until the malfunction has been corrected.

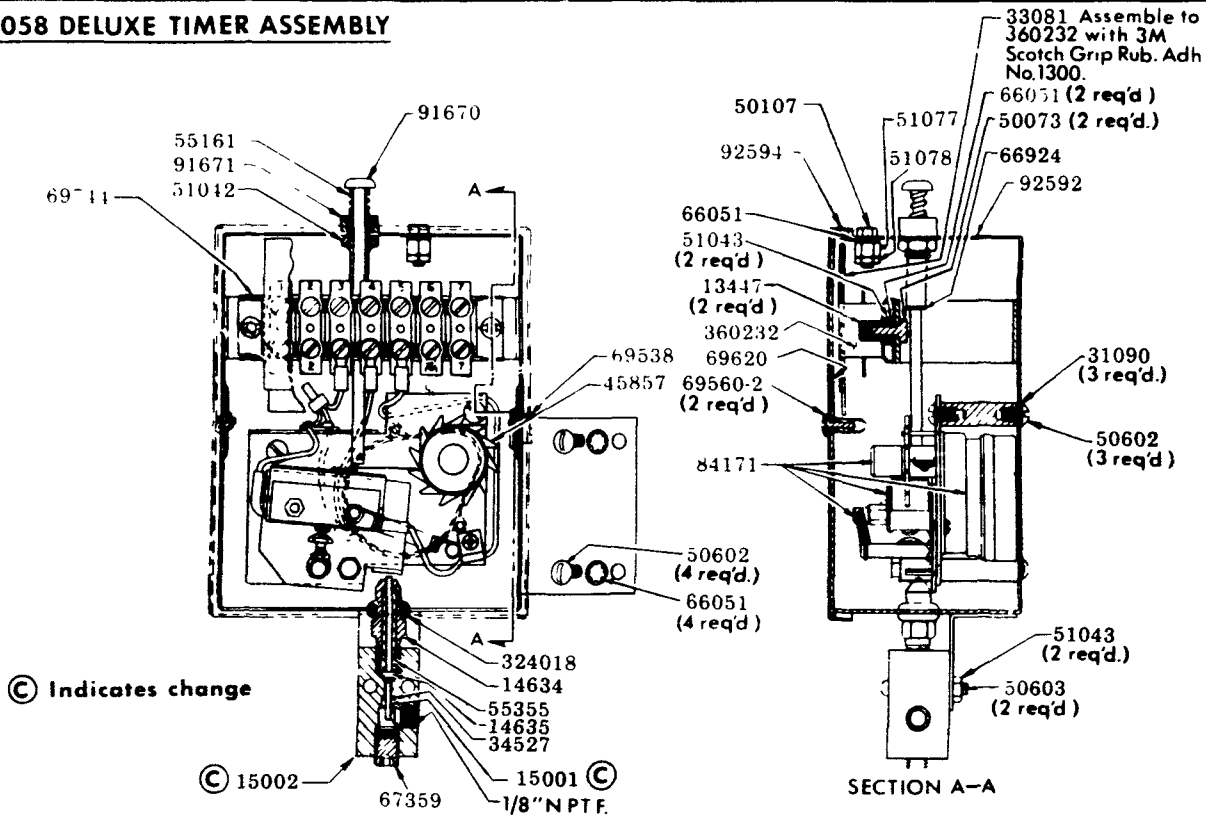
if the 92720 safety unloader should leak during the pumping period, tighten the set screw slightly to adjust the maximum allowable pressure

LINCOLN

LINCOLN, One Lincoln Way
St. Louis, Missouri 63120-1578
(314) 679-4200 Customer Service, (314) 679-4300

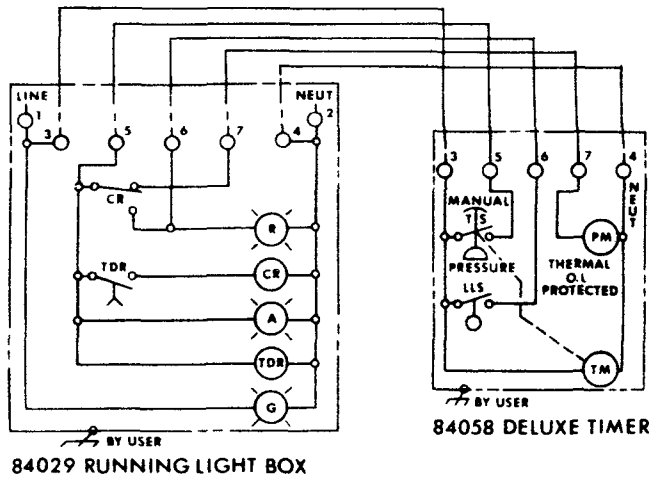
SECTION - **C8**
PAGE - **149A**

84058 DELUXE TIMER ASSEMBLY

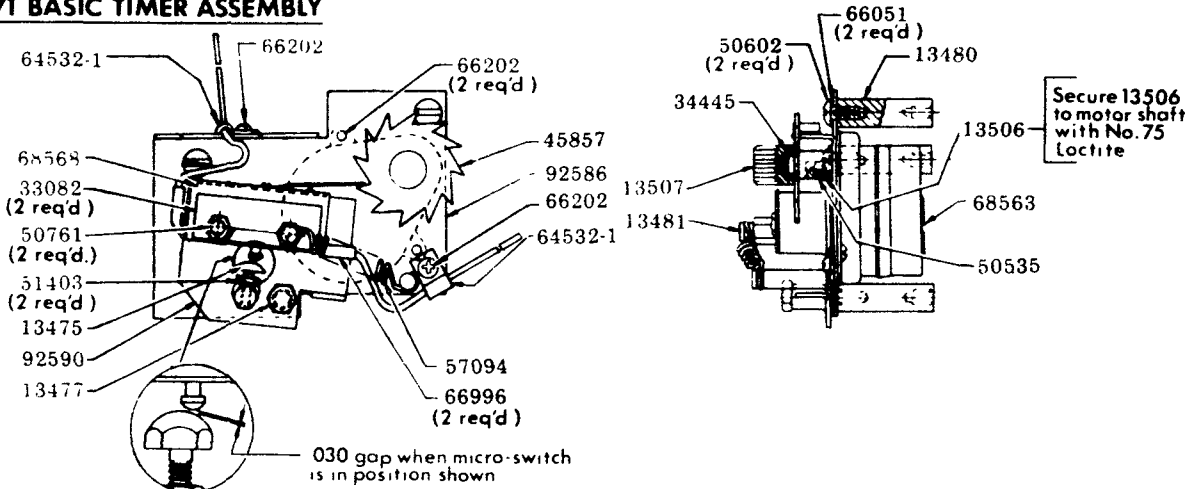


WIRING DIAGRAM FOR MODEL 84025 GEAR PUMP ASSEMBLY

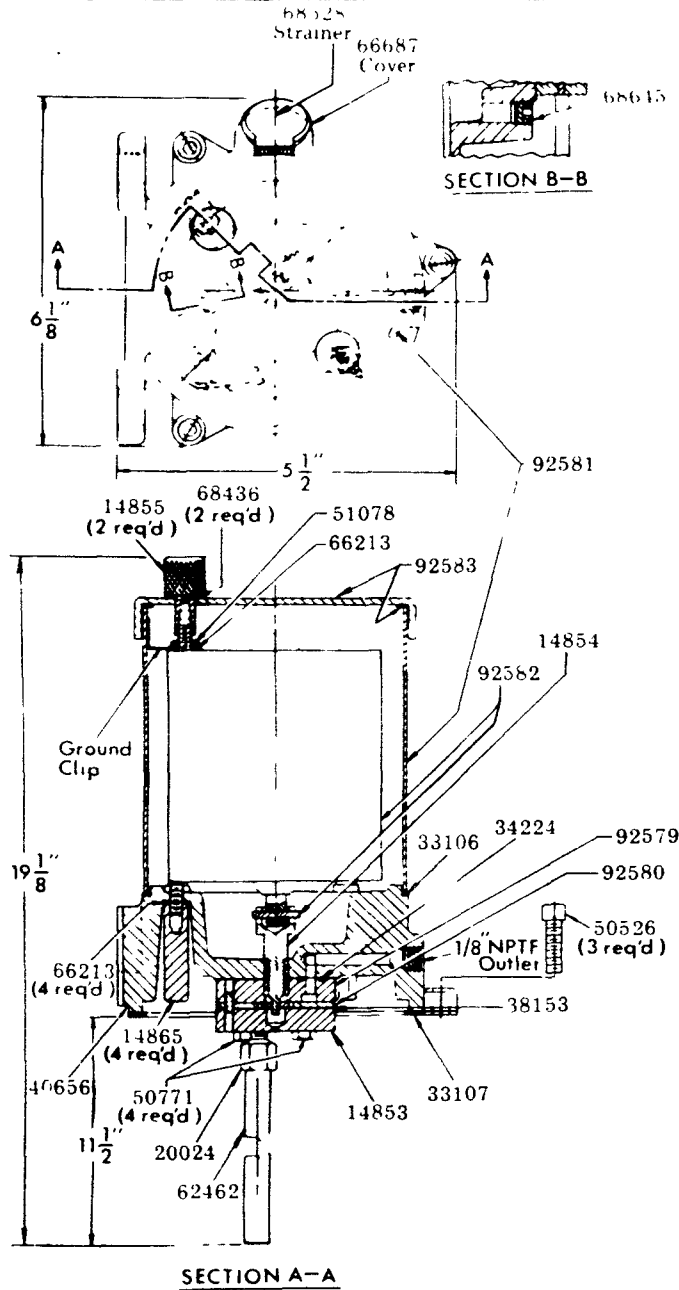
CODE	DESCRIPTION
R	RED LIGHT
CR	CONTROL RELAY
A	AMBER LIGHT
TDR	TIME DELAY RELAY
G	GREEN LIGHT
TS	TIMER SWITCH
LLS	LOW LEVEL SWITCH
PM	PUMP MOTOR
TM	TIMER MOTOR



84171 BASIC TIMER ASSEMBLY

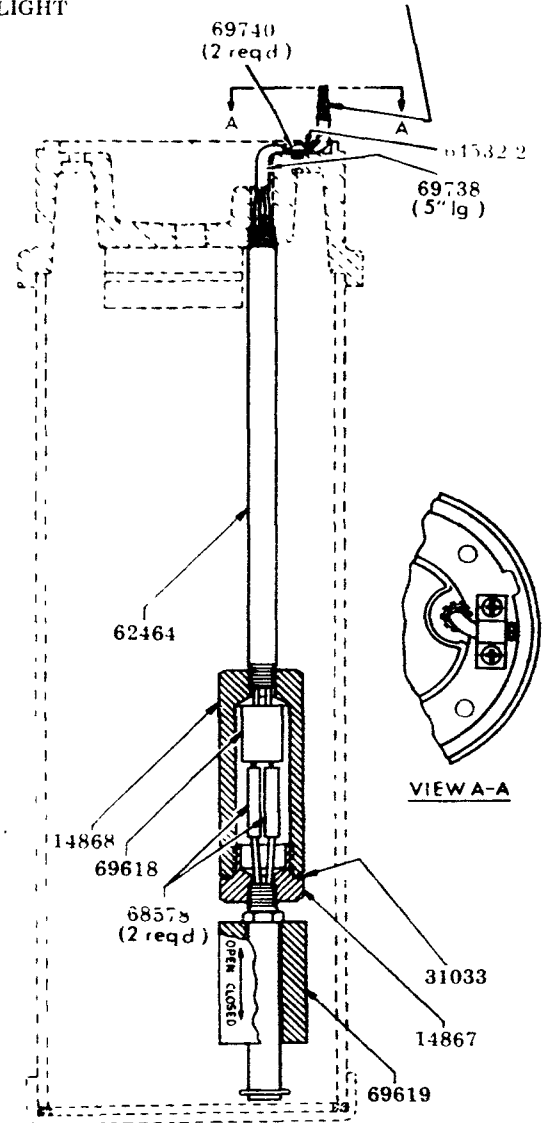


84028 GEAR PUMP (WITHOUT RESERVOIR)



84030 LOW LEVEL SWITCH ASSEMBLY

2 WIRFS IN 69738 SLEEVE 5" LG TO BE CLAMPED UNDER 64532 2 CLIP AS SHOWN WITH (2) 66202 SCREWS AND PASS BETWEEN ELECTRIC MOTOR & MOTOR COVER, OUT THE MOTOR COVER NYLON BUSHING TO THE TIMER BOX AND LOW LEVEL LIGHT



SPECIFICATIONS

Lubrication Cycle Intervals 5, 10, 15, 20, 30 or 60 minutes
 Maximum Pumping Time per Cycle

Cycle Interval	Pumping Period	Output
5 minute	20 seconds	3 cu. in.
10 minute or greater	40 seconds	6 cu. in.
Lubricant Pressure Developed	875-1,200 psig	
Allowable Lubricant Viscosity	500-50,000 Saybolt Universal Seconds	
Lubricant Reservoir Height	12 in max, 6 3/8 in. min	

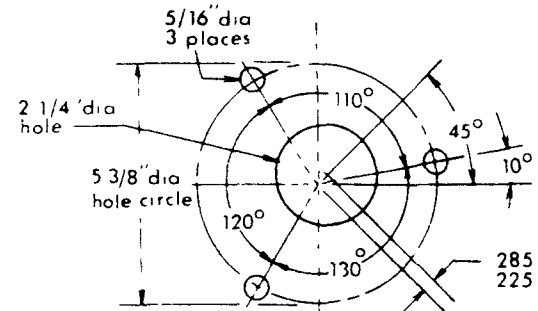
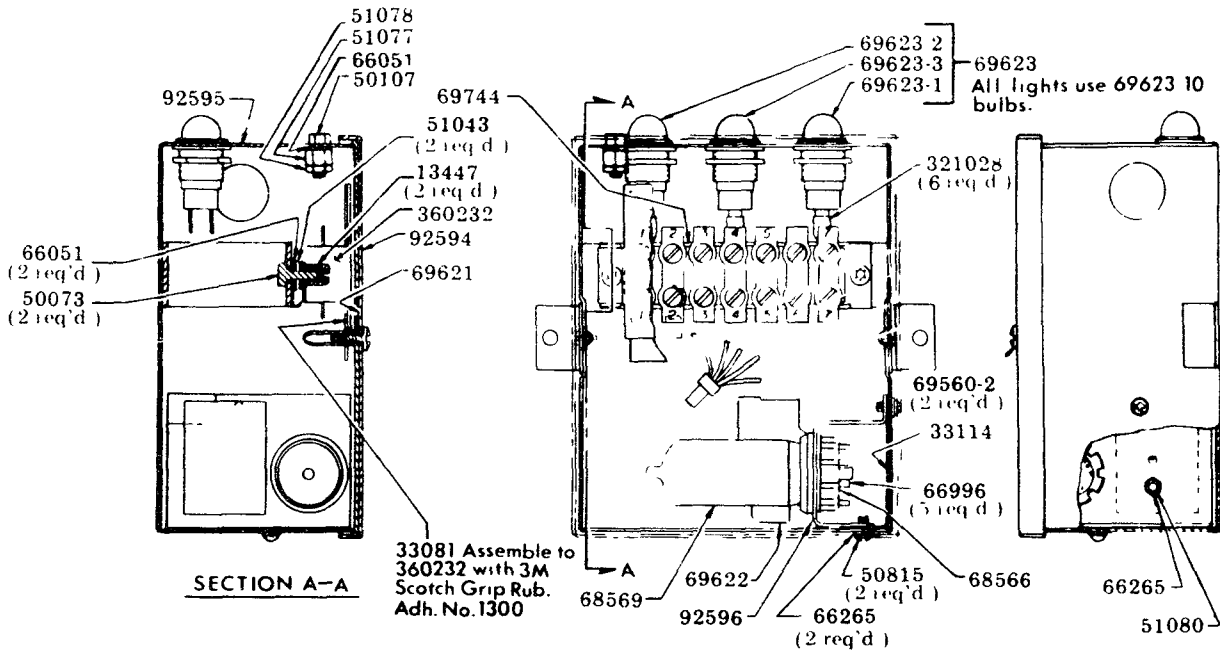


FIG. 'A'
Reservoir Mounting
Dimensions

84029 RUNNING LIGHT BOX ASSEMBLY



*Recommended parts to be stocked for replacement parts.

REPAIR PARTS LIST

PART NO.	DESCRIPTION	PART NO.	DESCRIPTION	PART NO.	DESCRIPTION
10130	Nipple	50815	Self-Tapping Screw	68645	Plug
13447	Nut	51042	Nut	69538	Snap Bushing
13475	Screw	51043	Nut	69560-2	Self-Tapping Screw
13477	Bolt	51077	Nut	* 69618	Load Pac
13480	Spacer	51078	Nut	* 69619	Level Switch
13481	Nut	51080	Nut	69620	Wiring Diagram
13506	Cam Shaft	51403	Nut	69621	Wiring Diagram
13507	Knob	55161	Spring	* 69622	Relay
14634	Indicator Housing	* 55355	Spring	69623	Pilot Light
14635	Actuator Pin	57094	Spring	* 69623-1	Red Light
* 14853	Wear Plate (inlet)	62462	Pipe	* 69623-2	Green Light
14854	Shaft Adapter	62463	Pipe	* 69623-3	Amber Light
14855	Motor Nut	62464	Pipe Nipple	* 69623-10	Bulb
14865	Elongated Nut	64532-1	Tube Clip	69738	Sleeve
14867	Load Pac Adapter	64532 2	Clip	69740	Self-Tapping Screw
14868	Load Pac Housing	66051	Lockwasher	69744	Terminal Block
15001	Pin	66200	Male Tube Connector	84028	Gear Pump
15002	Indicator Body	66201	Male Elbow Tube Connector	84029	Running Light Box
20024	Bushing	66202	Self-Tapping Screw	* 84030	Low Level Switch
31033	Gasket	66213	Lockwasher	84058	Deluxe Timer Ass'y
31090	Gasket	66265	Lockwasher	84171	Basic Timer Ass'y
33081	Insulator	66687	Oil Hole Cover	91670	Rod Assembly
33082	Insulator	66924	Tru Arc	91671	Bushing Assembly
* 33106	Gasket	66996	Insulator	* 92579	Wear Plate (outlet)
33107	Gasket	67359	Plug	* 92580	Gear Housing Ass'y.
33114	Insulator	67362	Cross	92581	Cover Assembly
* 34224	O-Ring	67368	Street Elbow	* 92582	Motor Assembly
34445	Gasket	68436	Lockwasher	92583	Top Cover Assembly
* 34527	O Ring	68528	Strainer	92586	Panel Assembly
* 38153	Shim	* 68563	Timer Motor	92590	Sleeve & Plate Ass'y
40656	Body	* 68566	Ring Type Socket	92592	Deluxe Timer Box
* 45857	Cam	* 68568	Micro-Switch	92594	Cover & Gasket Ass'y
50073	Screw	* 68569	Time Delay Relay	92595	Light Box Assembly
50107	Screw	68578	Butt Connector	92596	Relay Support Plate
50526	Cap Screw			* 92720	Safety Unloader
50535	Screw			* 321028	Tab Terminal Receptacle
50602	Screw			324018	Grommet
50603	Screw			360232	Cover
50761	Screw				
50771	Screw				