

SL-43 INJECTOR



Models **84110** SERIES
84429

HEAT RESISTANT

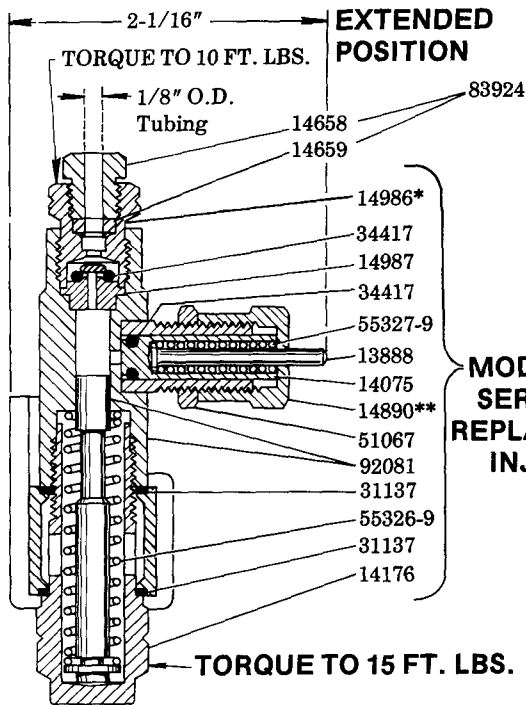
OUTPUT; Adjustable from .001 cu. in. to .008 cu. in.
OPERATING PRESSURE; 750 psi to 1000 psi
RECHARGE PRESSURE; 150 psi

* Groove in 14986 Outlet Body identifies injectors having O-ring Outlet Check.

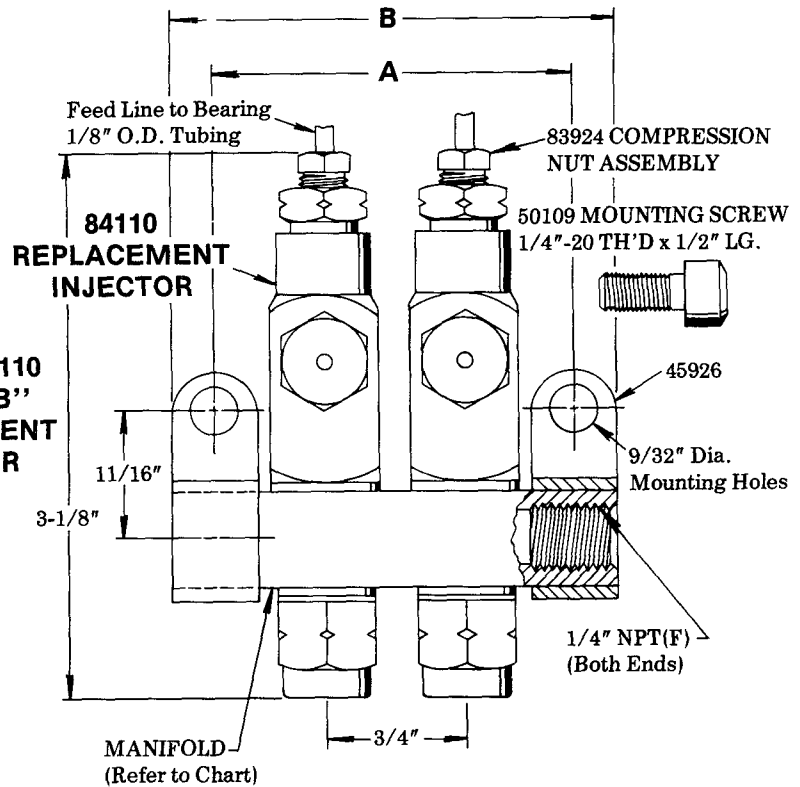
For dispensing oil only.

** Black finish indicates Heat Resistant Injector.

WORKING TEMPERATURE, 350°F MAXIMUM



MODEL 84110
SERIES "B"
REPLACEMENT
INJECTOR



MANIFOLD CHART

DESCRIPTION	MODEL	MANIFOLD	DIMENSIONS	
			A	B
1 UNIT	84429-1	91883-1	1-1/4"	1-3/4"
2 "	84429-2	91884-1	2"	2-1/2"
3 "	84429-3	91885-1	2-3/4"	3-1/4"
4 "	84429-4	91886-1	3-1/2"	4"

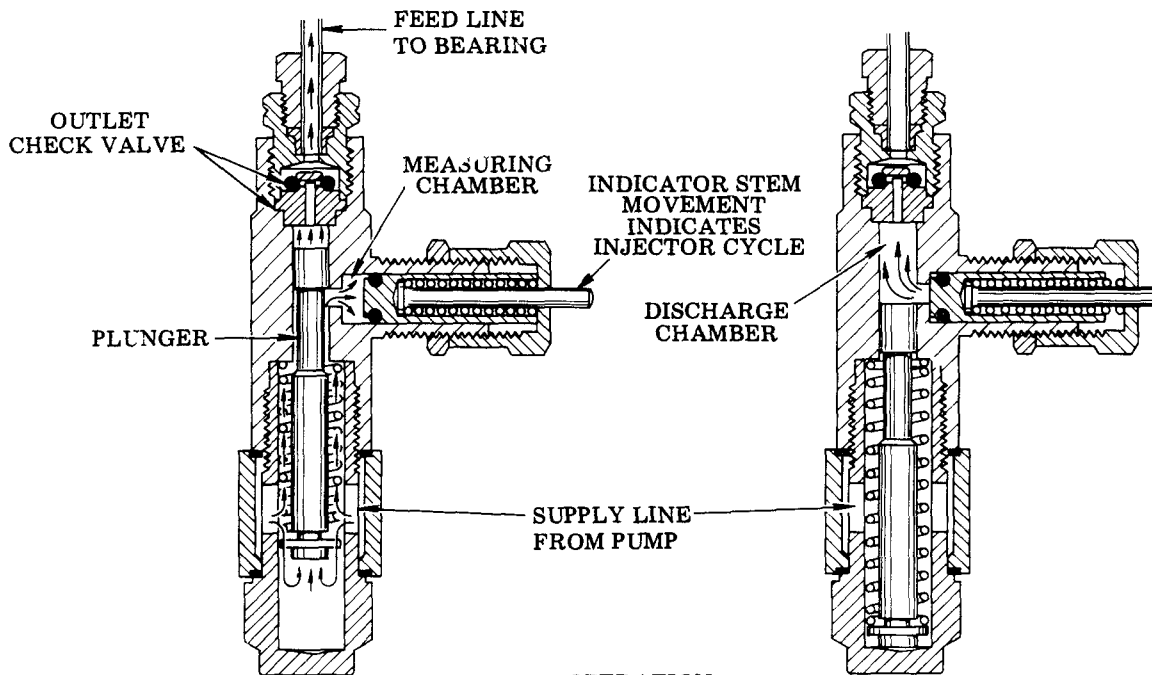
SERVICE PARTS

PART	QUAN.	DESCRIPTION	PART	QUAN.	DESCRIPTION
13888	1	Injector indicator	34417	2	O-ring
14075	1	Packing retainer	45926	2	Manifold mounting clip
14176	1	Adapter	50109	2	Mounting screw
14658	1	Compression nut	51067	1	Lock nut
14659	1	Ferrule	55326-9	1	Spring
14890	1	Injector cap	55327-9	1	Spring
14986	1	Outlet body	83924	1	Compression nut assembly
14987	1	Outlet seat	92081	1	Body & plunger assembly
31137	2	Gasket			

LINCOLN ST. LOUIS
4010 GOODFELLOW BLVD • ST LOUIS, MO 63120 • (314) 383-5900

A DIVISION OF
McNEIL
CORPORATION

SECTION **-C8**
PAGE **-158 A**



SUPPLY LINE UNDER PRESSURE

(Normal operating pressure 850 P.S.I.G.)

Lubricant pressure moves plunger to force lubricant in the discharge chamber through the outlet check valve to the feed line.

Lubricant from supply line charges the measuring chamber.

SUPPLY LINE VENTED

(Vent pressure 150 P.S.I.G. maximum)

Plunger returns to normal position after supply line is vented, connecting measuring chamber to the discharge chamber. Flow from feed line is blocked by the outlet check valve.

Lubricant is automatically transferred from measuring chamber to discharge chamber.

INJECTOR ADJUSTMENT

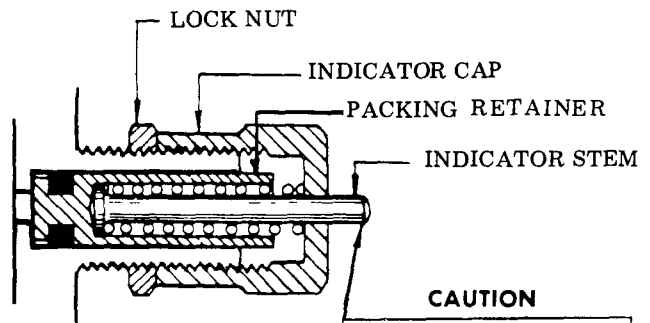
Injector output is controlled by the position of the indicator cap which limits the travel of the packing retainer.

With the indicator cap hand tightened against its stop, the lubricant output is decreased to a minimum.

Retracting the indicator cap five full turns permits a maximum of .008 cu. in. to be dispensed.

Retracting the indicator cap beyond five full turns will not increase the lubricant output.

When the injector has been adjusted for the proper lubricant output, the lock nut is tightened against the face of the indicator cap.



CAUTION

INDICATOR CAP MUST NOT EXTEND BEYOND RETRACTED POSITION OF INDICATOR STEM

RETAIN THIS INFORMATION FOR FUTURE REFERENCE

When ordering replacement parts, list: Part Number, Description, Model Number, and Series Letter.
LINCOLN ST. LOUIS provides a Distributor Network that stocks equipment and replacement parts.
 A list of Authorized Service Departments will be furnished upon request.