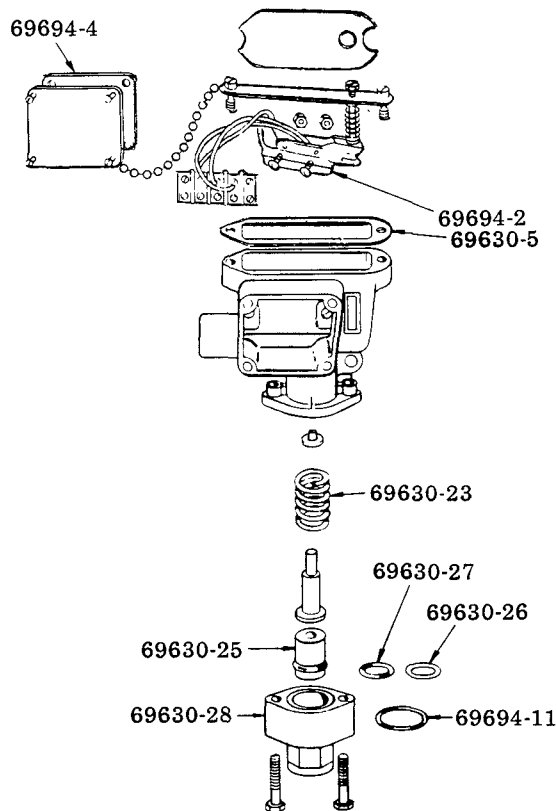
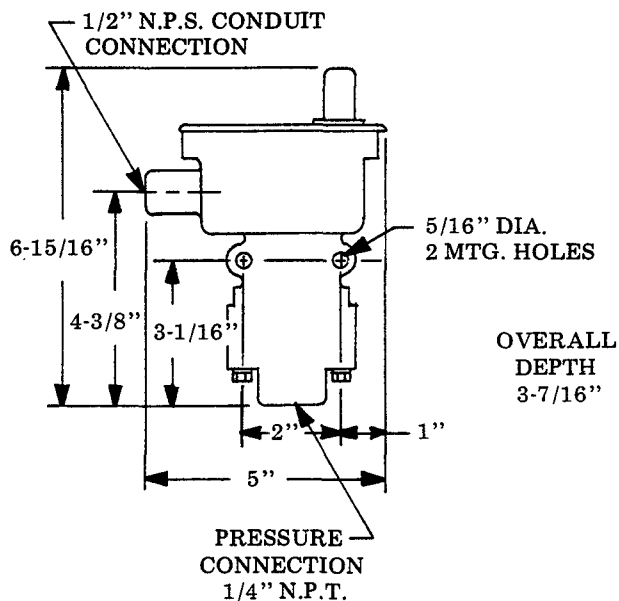


10 AMP. CAPACITY: 125, 250 OR 460 VOLTS A.C.



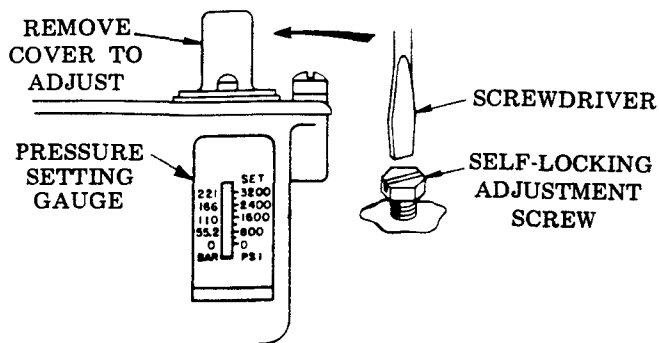
	Adjustable Range	
	Decreasing	Increasing
Min.	250 P.S.I.	280 P.S.I.
Max.	2775 P.S.I.	3000 P.S.I.

NOTE: Set pressure switch after installing.
Grease system — 2500 P.S.I.
Oil system — 850 P.S.I.

TO ADJUST ACTUATING PRESSURE

To lower the actuation pressure turn the self-locking adjustment screw clockwise.

NOTE: Pressure switch is provided with a scale indicating pressure in "Bars" as well as lbs. per sq. in. "Bars" is the metric unit of measure for pressure.



SERVICE PARTS

Part No.	Description	Part No.	Description
69630-5	Gasket	69630-28	Fitting
69630-23	Return Spring	69694-2	Limit Switch
69630-25	Piston	69694-4	Gasket
69630-26	Backup ring	69694-11	O-Ring
69630-27	O-Ring		