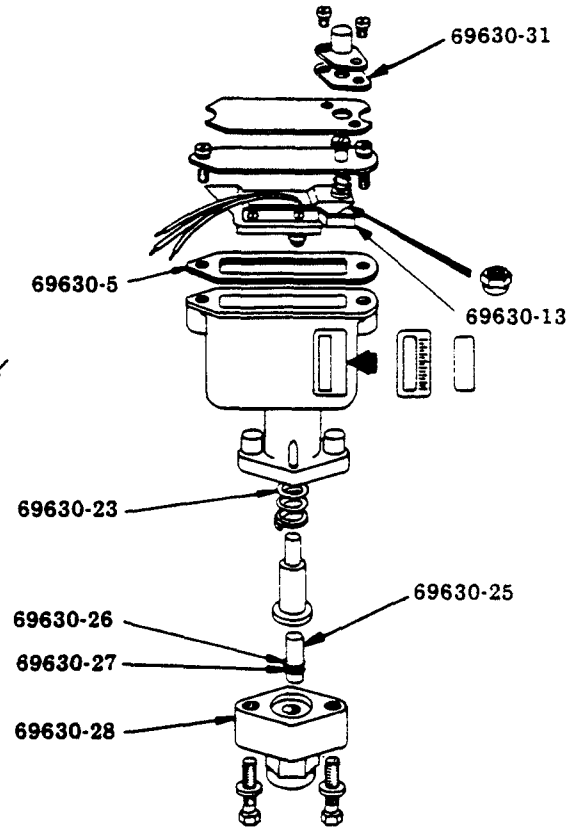
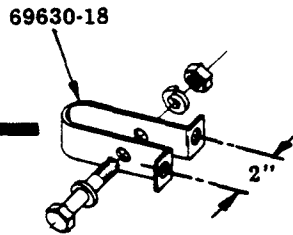
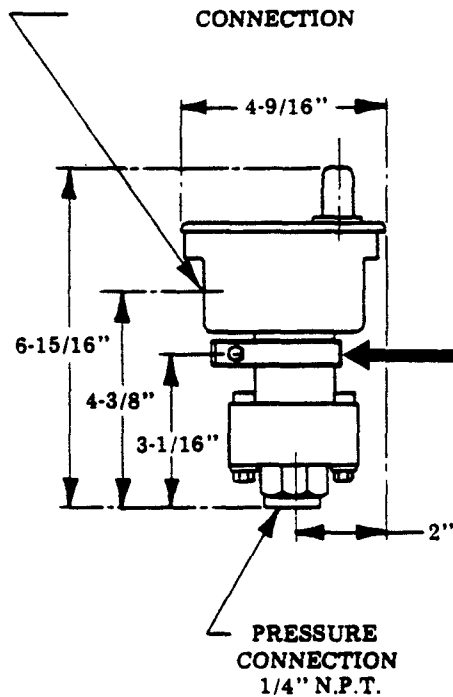


10 AMP. CAPACITY: 125, 250 OR 460 VOLTS A.C.



	Adjustable Range	
	Decreasing	Increasing
Min.	250 P.S.I.	280 P.S.I.
Max.	2775 P.S.I.	3000 P.S.I.

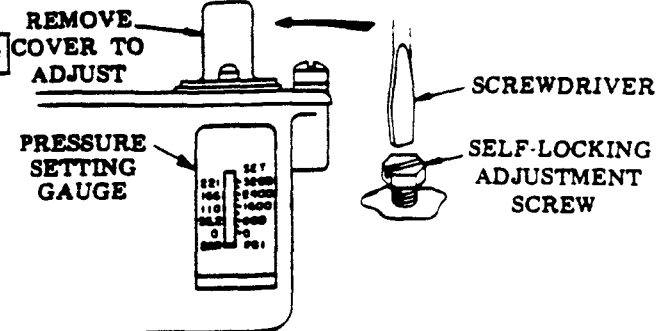
PRESSURE SWITCH MUST BE ADJUSTED AFTER INSTALLING

Grease system — 2500 P.S.I.
Oil system — 850 P.S.I.

TO ADJUST ACTUATING PRESSURE

To lower the actuation pressure turn the self-locking adjustment screw clockwise.

NOTE: Pressure switch is provided with a scale indicating pressure in "Bars" as well as lbs. per sq. in. "Bars" is the metric unit of measure for pressure.



SERVICE PARTS

Part	Description
69630-5	Gasket
69630-13	Limit Switch
69630-18	Mounting Bracket
69630-23	Return Spring
69630-25	Piston
69630-26	Piston Back-Up
69630-27	Piston O-Ring
69630-28	Fitting
69630-31	Adjusting Screw Gasket

WIRING CODE

Red	Normally Open
Blue	Normally Closed
Purple	Common