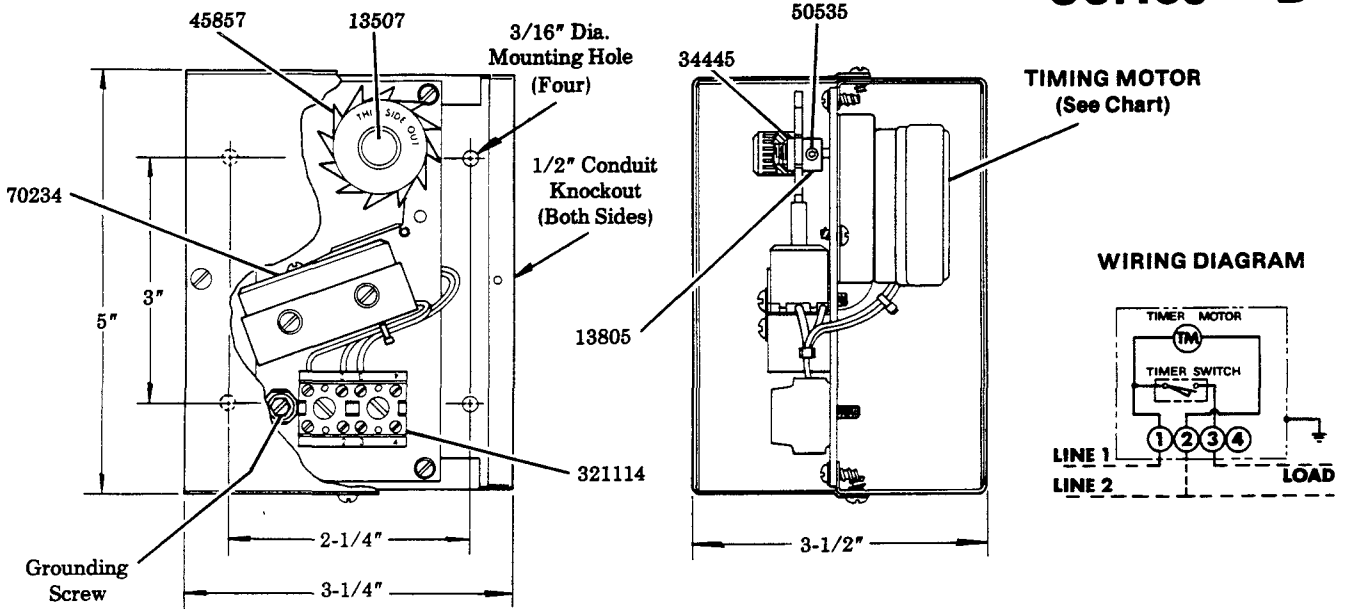


U.L. LISTED &
C.S.A. CERTIFIED

3.5 watts

PROGRAM TIMERS Series "B"



MODEL	TIMING MOTOR	VOLTAGE	MAX. CYCLE TIME
84511	323067	120 V., 60 Hz.	60 min. max.
84512	323071	120 V., 60 Hz.	10 min. max.
84513	323070	220 V., 50 Hz.	60 min. max.
84514	323074	220 V., 50 Hz.	10 min. max.
84515	323068	240 V., 60 Hz.	60 min. max.
84516	323072	240 V., 60 Hz.	10 min. max.
84517	323069	110 V., 50 Hz.	60 min. max.
84518	323073	110 V., 50 Hz.	10 min. max.

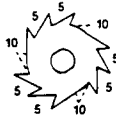
SERVICE PARTS

PART	QUAN.	DESCRIPTION
13507	1	Knob
13805	1	Camshaft
34445	1	Gasket
45857	1	Cam
50535	1	Set screw
70234	1	Micro switch
321114	1	Terminal block

TO CHANGE LUBRICATION FREQUENCY

Remove cam by rotating 13507 Knob counter-clockwise. Refer to the cam illustrations and break off the appropriate number of lobes by bending them back and forth with pliers. Variations from equal intervals shown in chart can be attained by breaking off cam lobes at unequal spaces. See example below. On a 60 minute timer, the desired number of lubrication cycles per hour (12 max.) is determined by the number of lobes left on the cam.

EXAMPLE: 60 MINUTE TIMER
(Six) 5 Minute Cycle Intervals
(Three) 10 Minute Cycle Intervals



45857 CAM	10 MIN. MAX.	60 MIN. MAX.
12 LOBES	50 SECONDS	5 MINUTES
6 LOBES	100 SECONDS	10 MINUTES
4 LOBES	2-1/2 MINUTES	15 MINUTES
3 LOBES	3-1/3 MINUTES	20 MINUTES
2 LOBES	5 MINUTES	30 MINUTES
1 LOBE	10 MINUTES	60 MINUTES



One Lincoln Way St. Louis, Missouri 63120-1578
(314) 679-4200 Telex 44881

SECTION - C8
PAGE - 190B