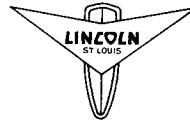
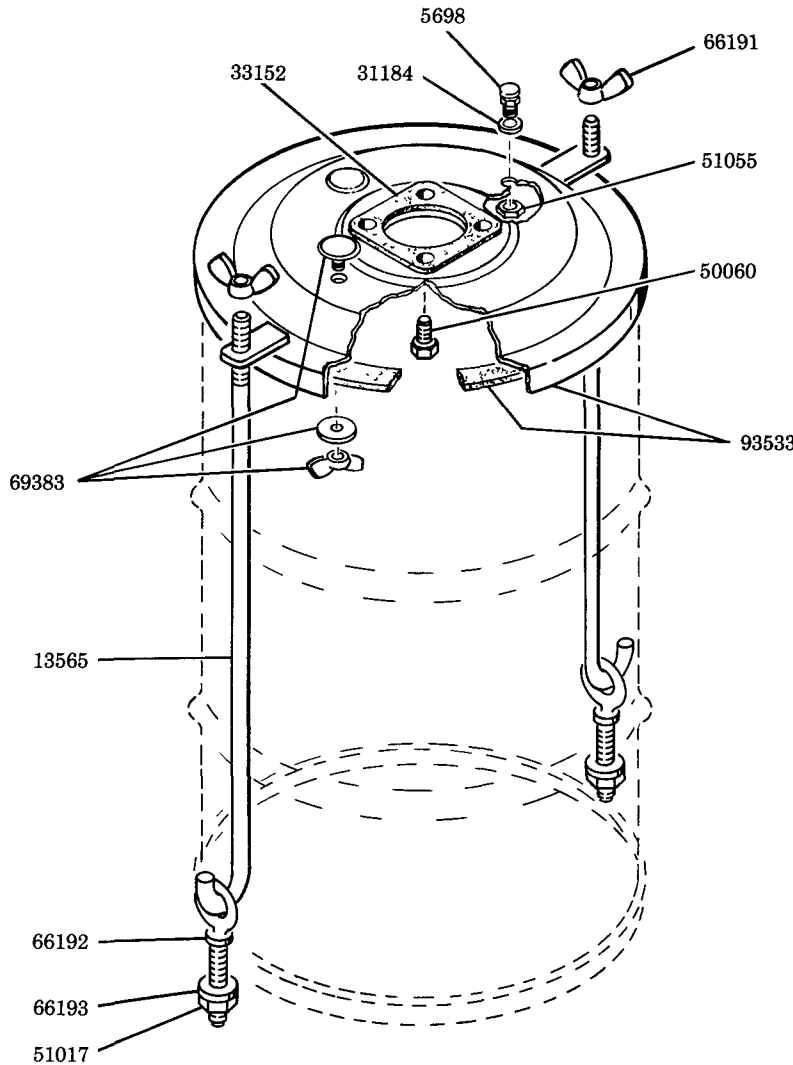


DRUM COVER & TIE ROD ASSEMBLY

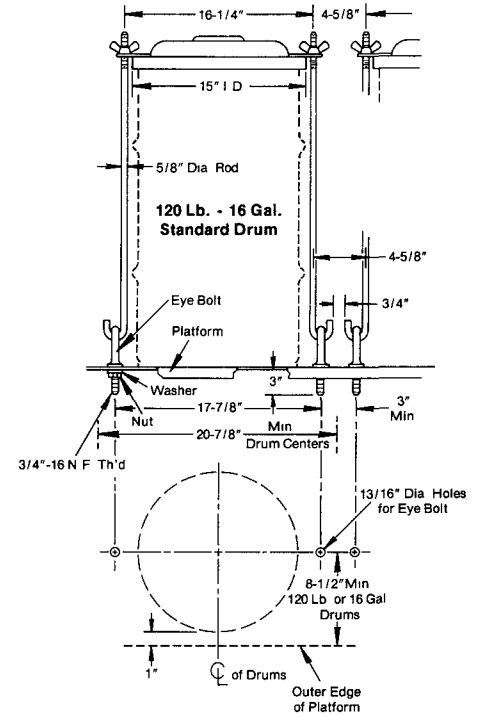
120 LB. DRUM



Model 84616



TIE ROD EYE BOLT LOCATION



ASSEMBLY INSTRUCTIONS

- 1) Assemble pump to 93533 Drum Cover using the 50060 Screws provided.
- 2) Attach 66192 Eyebolts to floor or truck bed with 51017 Nuts & 66193 Washers. Hook 13565 Tie Rods into eyebolts.
- 3) Place drum cover over drum and insert tie rods into brackets. Secure drum cover by tightening 66191 Wing Nuts.

SERVICE PARTS

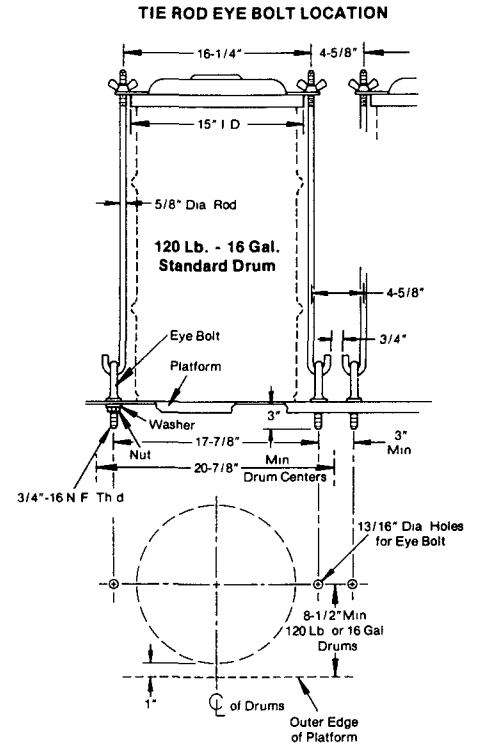
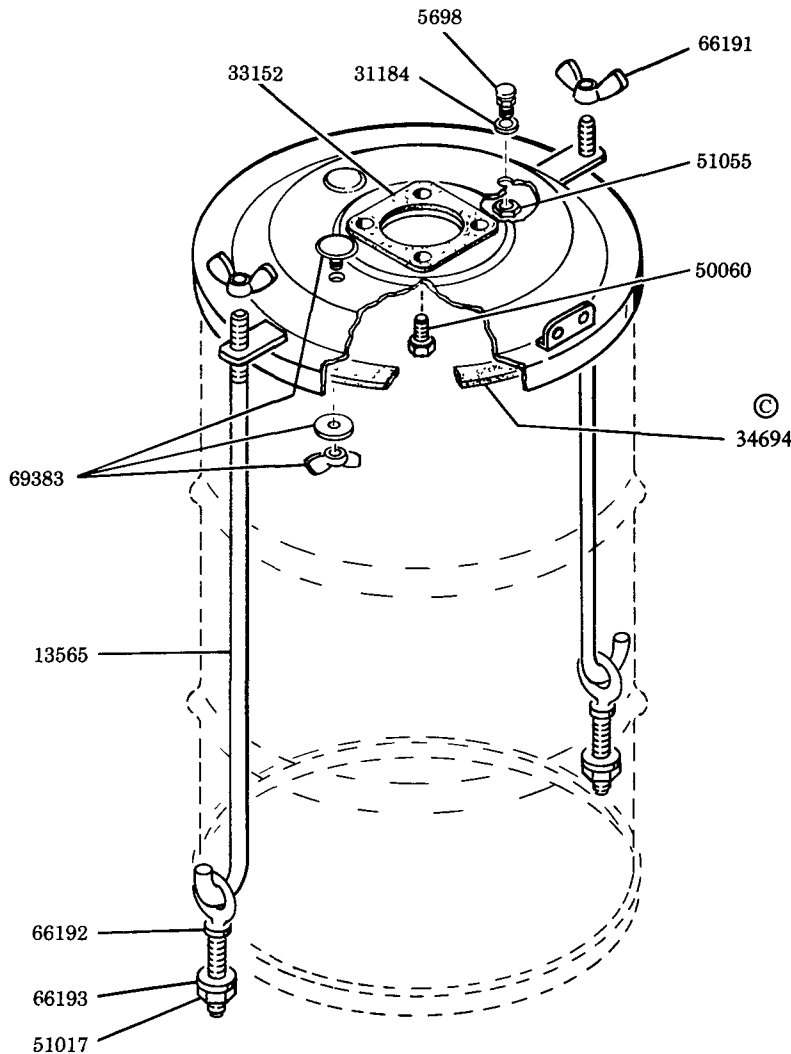
PART	QUAN.	DESCRIPTION	PART	QUAN.	DESCRIPTION	PART	QUAN.	DESCRIPTION
5698	1	Vent fitting	50060	4	Screw	66192	2	Eye bolt
13565	2	Tie rod	51017	2	Nut	66193	2	Washer
31184	1	Washer	51055	1	Nut	69383	2	Hole cover
33152	1	Gasket	66191	2	Wing nut	93533	1	Drum cover

LINCOLN ST. LOUIS
4010 GOODFELLOW BLVD • ST. LOUIS, MO 63120 • (314) 679-4200



SECTION - **C8**
PAGE - **203**

120 LB. DRUM



ASSEMBLY INSTRUCTIONS

- 1) Assemble pump to drum cover using the 50060 Screws provided.
- 2) Attach 66192 Eyebolts to floor or truck bed with 51017 Nuts & 66193 Washers. Hook 13565 Tie Rods into eyebolts.
- 3) Place drum cover over drum and insert tie rods into brackets. Secure drum cover by tightening 66191 Wing Nuts.

SERVICE PARTS

Part	Qty.	Description
5698	1	Vent fitting
13565	2	Tie rod
31184	1	Washer
33152	1	Gasket
34694	1	Gasket
50060	4	Screw
51017	2	Nut
51055	1	Nut
66191	2	Wing nut
66192	2	Eyebolt
66193	2	Washer
69383	2	Hole cover

© Indicates Change