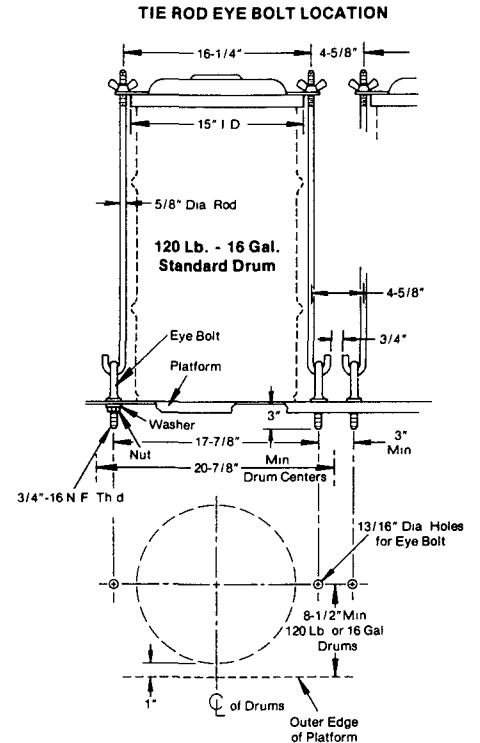
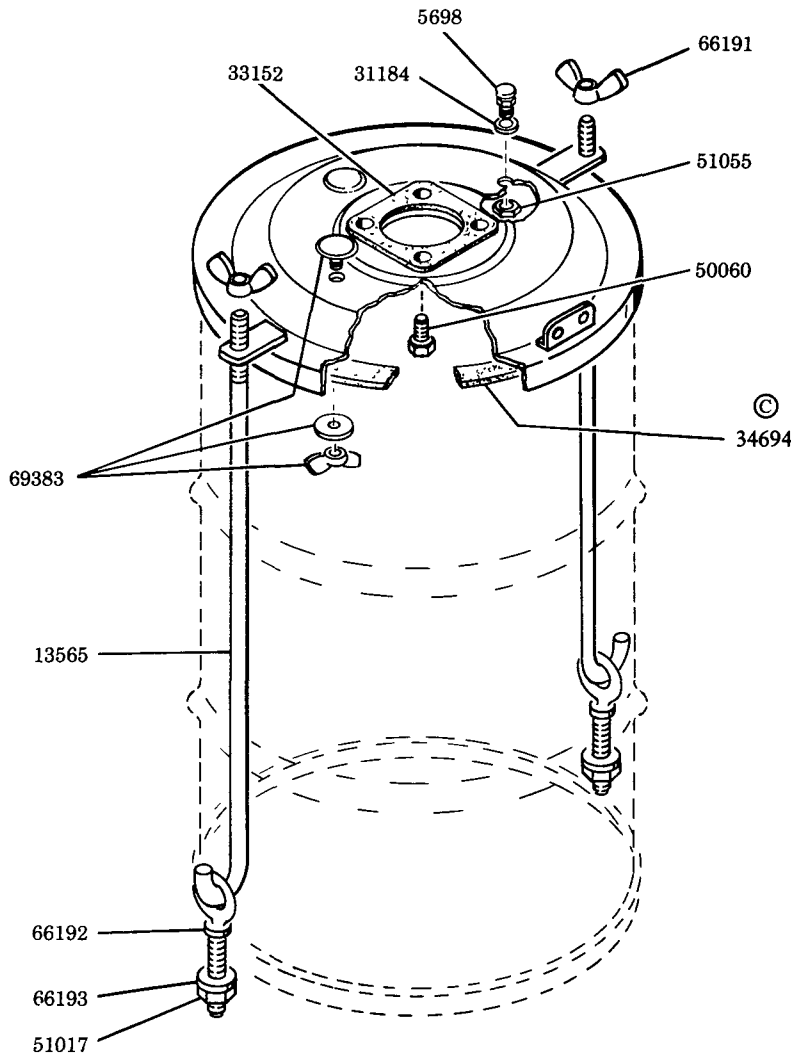


120 LB. DRUM



ASSEMBLY INSTRUCTIONS

- 1) Assemble pump to drum cover using the 50060 Screws provided.
- 2) Attach 66192 Eyebolts to floor or truck bed with 51017 Nuts & 66193 Washers. Hook 13565 Tie Rods into eyebolts.
- 3) Place drum cover over drum and insert tie rods into brackets. Secure drum cover by tightening 66191 Wing Nuts.

SERVICE PARTS

Part	Qty.	Description
5698	1	Vent fitting
13565	2	Tie rod
31184	1	Washer
33152	1	Gasket
34694	1	Gasket
50060	4	Screw
51017	2	Nut
51055	1	Nut
66191	2	Wing nut
66192	2	Eyebolt
66193	2	Washer
69383	2	Hole cover

© Indicates Change