

CENTRO-MATIC CONTROL PANEL

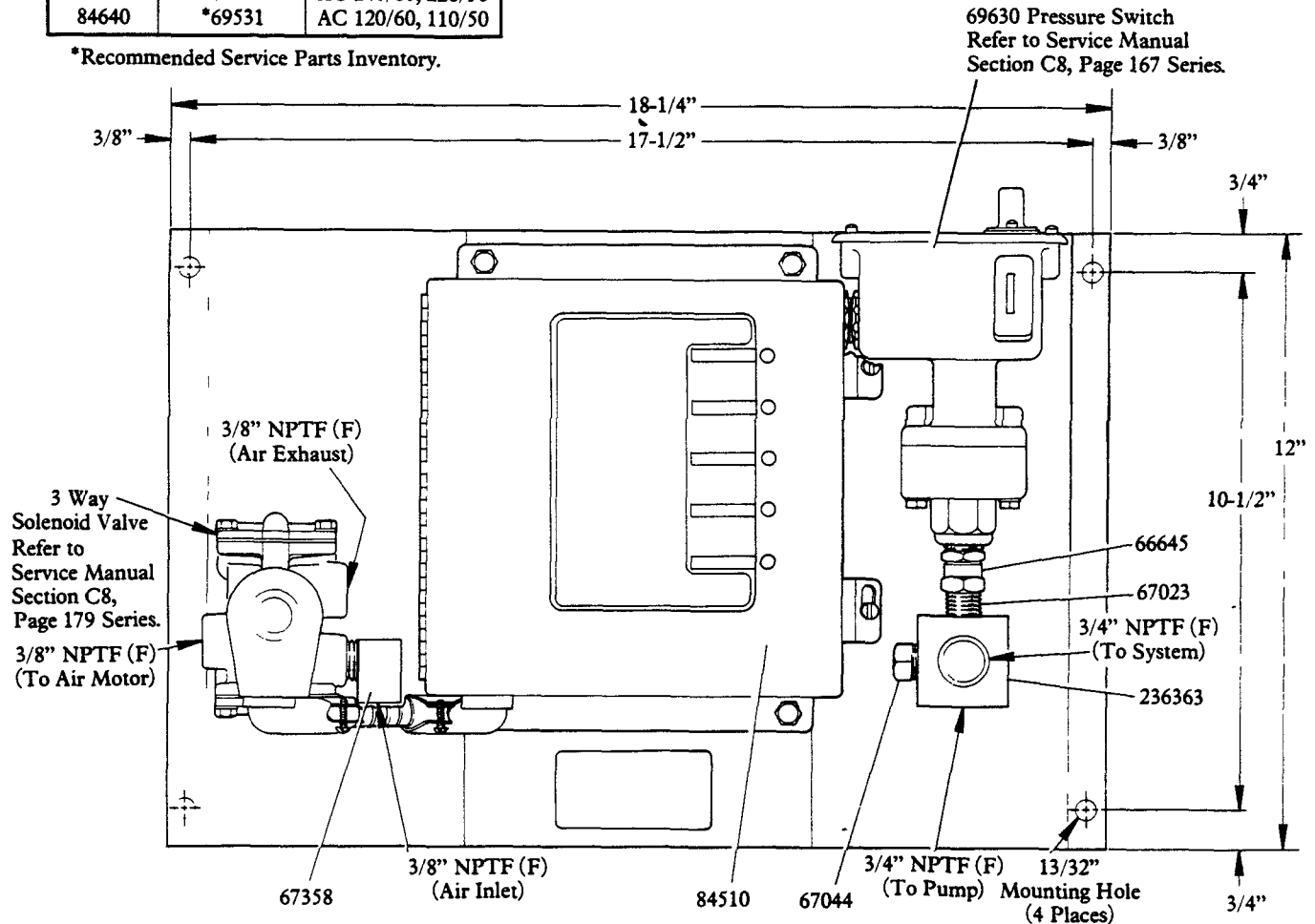
Models 84638 84640 Series "A"

MODEL CHART

Model	Solenoid Valve	Voltage
84638	*69553	AC 240/60, 220/50
84640	*69531	AC 120/60, 110/50

*Recommended Service Parts Inventory.

FOR 84510 PROGRAM TIMER REFER TO SERVICE MANUAL SECTION C8, PAGE 226 SERIES.



DESCRIPTION

The 84638 and 84640 Control Panels incorporate a solid state control with signal lamps on the controller door. Used on systems where airmotor-driven pumps are used, the air supply to pump airmotor is controlled through the air solenoid valve on the control panel. Venting is accomplished through air-operated valve at pump outlet.

NOTE: Control Panel consists of all UL Recognized electrical components.

ELECTRICAL SPECIFICATIONS

The 84638 Control Panel is designed for use on 240 Volts, 60 Hz., or 220 Volts, 50 Hz. Single Phase. The 84640 Control Panel is designed for use on 120 Volts, 60 Hz., or 110 Volts, 50 Hz. Single Phase. Total power required is 47 Volt-Amps maximum not including power required to operate external alarm load.

OPERATION

- 1) With power "TURN ON", green and amber lamps (on controller door) light. Solenoid valve is energized to deliver air to pump and air vent valve. Pump begins dispensing lubricant through injectors to bearings.
- 2) When all bearings have received lubricant, pressure rises in system to actuate pressure switch. When pressure switch actuates, the control is reset to de-energize solenoid valve cutting off air to pump and vent valve. Pump stops, pressure vents and pressure switch de-actuates.
- 3) Control begins timing toward next lube event. After the time interval between lube events has elapsed the solenoid valve is energized to deliver air to pump and vent valve. Pump begins dispensing lubricant through injectors to bearings.
- 4) Operation continues as indicated in steps 2 & 3 above.

LINCOLN

LINCOLN, One Lincoln Way
St. Louis, Missouri 63120-1578
(314) 679-4200

SECTION - C8
PAGE - 223

LUBRICATION FAILURE ALARM

If pressure switch fails to actuate within the time set on rocker switch, the red lamp (on controller door) will light. The solenoid valve will be de-energized shutting off air to pump and vent line. With control in alarm no more lube events will occur. The control will remain in this state until power is interrupted or manual lube switch is actuated.

MONITOR SIGNALS

A remote monitor, either a horn or a light, can be used as a signal if the system fails to complete a pumping period within the time set. 83354 and 83546 Signal Monitors are available for use with Models 84640 and 84638 respectively. A green lamp indicates system is on, amber lamp indicates a lube cycle, and a red lamp lights and horn sounds to indicate a lube failure. Refer to Service Manual Section C8, Page 165 Series.

MODEL 69630 PRESSURE SWITCH

IMPORTANT

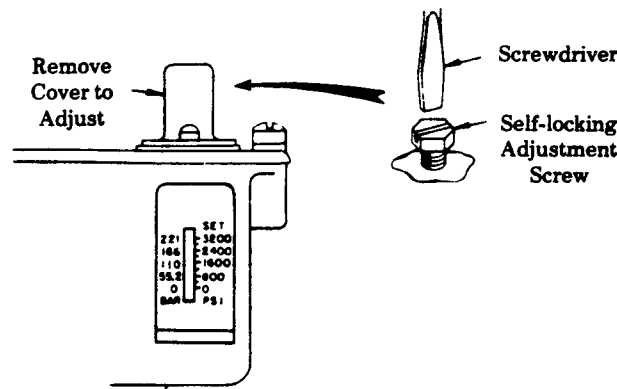
The 69630 Pressure Switch is factory set at 2500 psi for normal high pressure grease systems.

For low pressure oil systems, pressure switch MUST be reset for 850 psi.

To lower actuation pressure, turn the self-locking adjustment screw clockwise. To raise the actuation pressure, turn the adjustment screw counter-clockwise.

NOTE:

Pressure switch is provided with a scale indicating pressure in "Bars" as well as lbs. per square inch. "Bar" is the metric unit of measure for pressure.



IMPORTANT

To assure accuracy when setting pressure switch, a pressure gauge should be used in the supply line.

SERVICE PARTS

PART	QUAN.	DESCRIPTION
66645	1	Adapter union
67023	1	Nipple
67044	1	Plug
67358	1	Elbow
*69630	1	Pressure switch
84510	1	Program timer
236363	1	Junction block

*Recommended Service Parts Inventory

RETAIN THIS INFORMATION FOR FUTURE REFERENCE

When ordering replacement parts, list: Part Number, Description, Model Number, and Series Letter.

LINCOLN provides a Distributor Network that stocks equipment and replacement parts.

A list of Authorized Service Departments will be furnished upon request.