

SPECIFICATIONS

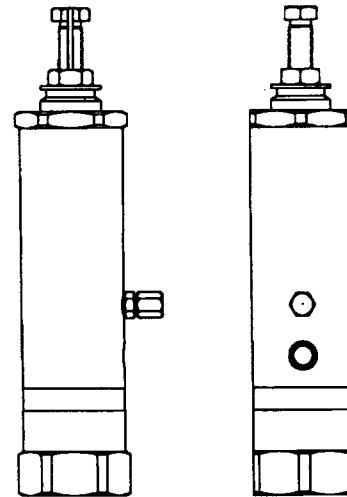
For dispensing fluid lubricant or grease.
Output is adjustable from .05 cu. in. to .5 cu. in.

MATERIALS

Packings are compatible with common synthetic and petroleum based lubricants.

OPERATING PRESSURE

- ©1000 p.s.i. Minimum
- 2500 p.s.i. Recommended
- 3500 p.s.i. Maximum
- © 800 p.s.i. Maximum Recharge Pressure

**Description:**

SL-11 series injectors are designed for applications requiring large volumes of grease. They are supplied with packings compatible with synthetic and petroleum based greases. Available only as a single unit with 1/2 NPT inlet, and 1/4 NPT outlet. The SL-11 injector incorporates a hydraulic filler fitting for priming the feed line.

Output adjustment:

The SL-11 injector's output is adjusted with the hex screw on top of the unit. A minimum output of approx. .050 cu. in. is obtained when the adjusting screw is turned clockwise, into the injector, hand tight. To obtain the maximum output of .50 cu. in., start at the minimum setting and turn the screw counterclockwise 12 3/4 turns, out of the injector. Each turn of the screw is equal to .043 cu. in. in output. When the injector is adjusted to a half turn open or less, output from the injector should be verified.

Disassembly Instructions:

1. Remove the adjustment adapter (item #3) from the top of the injector. Remove the piston assembly (item #8), spring (item #9), and spacer (item #19) from inside the injector.
2. Remove the inlet adapter (item # 18) from the bottom of the injector. To remove the slide valve assembly (item #11), turn injector over, with the top pointing down. If the slide valve does not fall out, it may be pushed out of the slide valve packings (items #13) with a blunt object, being careful not to scratch or cut the packings in the slide valve body.
3. To remove the valve body (item #16):
 - a. If it sticks in the inlet adapter (item #18), gently pry the valve body out of the inlet adapter using a small round rod. Place the rod into a hole in the side of the valve body and pry against the face of the inlet adapter. Work one hole at a time, working around the valve body until it is freed.

© INDICATES CHANGES

Continued on page 3

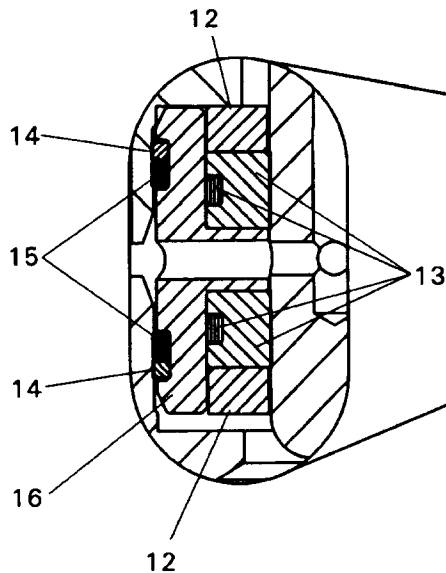
SERVICE PARTS

Item No.	Description	Qty	Part No.
1	Adjusting Screw	1	244628
2	Lock Nut	1	51039
3	Adjustment Adapter	1	244613
4	O-Ring (viton)	2	*
5	Washer	1	*
6	Packing (viton)	1	*
7	O-Ring (viton)	1	*
8	Piston Ass'y.	1	244622
9	Plunger Spring	1	*
10	Fitting Ass'y.	1	90471
11	Slide Valve Ass'y.	1	*
12	Spacer	2	**
13	Packing (Hytre)	2	*
14	Back-up Ring (teflon)	2	*
15	O-Ring (viton)	2	*
16	Valve Body	1	**
17	Injector Body	1	247768
18	Inlet Adapter	1	244611
19	Spacer	1	244626

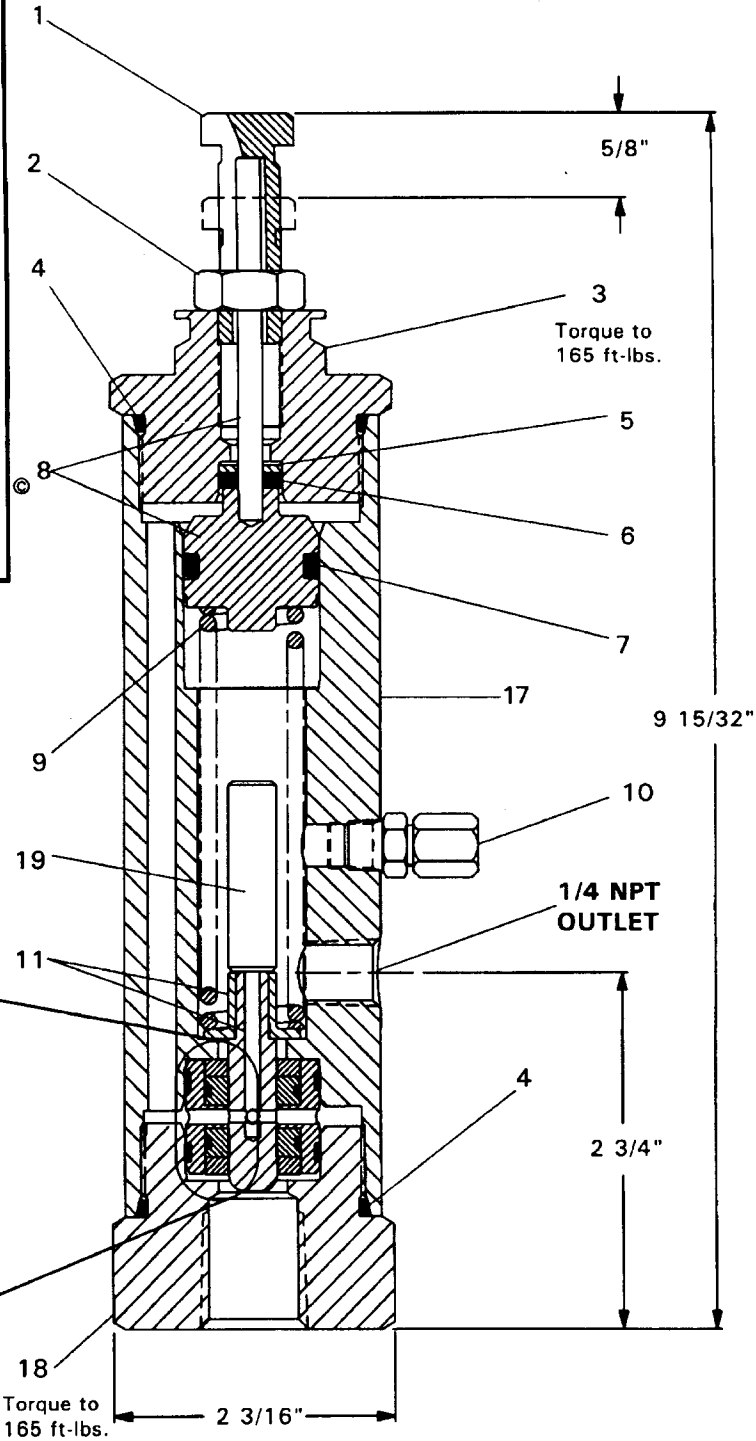
INJECTOR SERVICE KITS:

Part No. 247842® Injector Repair Kit contains all normal wear parts for this injector. Indicated with the single star (*), above.

Part No. 244634, Valve Body Ass'y. contains the slide valve body and spacers for this injector. Indicated with the double star (**), above.



SLIDE VALVE DETAIL



b. If the valve body sticks in the injector body, turn injector right side up and use a 7/16 to 1/2" brass or wooden dowel rod to gently tap the valve body out of the injector body.

4. To remove the indicator stem packing (item #6) from the adjustment adapter (item #3), remove the adjustment screw (item #1) from the adjustment adapter. Use a blunt object, such as a wooden dowel, placed into the adjustment screw hole to gently push the washer (item #5) and packing out of the adjustment adapter, from the bottom side.

Reassembly Instructions:

1. Clean all injector components, and carefully inspect all parts for wear, replacing parts as necessary. (See trouble shooting chart for guidance.)

2. Start reassembly by pre-assembling the valve body, by installing the two packings (items #13) into the valve body (item #16), followed by the spacers (items #12). Install the O-rings (items #15) and back-up rings (items #14) into the grooves on the outside of the valve body. (See valve body detail, for correct assembly sequence.) Apply a liberal amount of grease to O-rings on outside of valve body, and gently push the pre-assembled valve body into the inlet adapter (item #18).

3. Install O-ring (item #4) onto the inlet adapter (item #18). Install inlet adapter into the injector body, and tighten by hand assuring that the valve body slides into its respective bore in the injector body. Tighten the inlet adapter to the injector body.

4. Apply a liberal coating of grease to the slide valve assembly (item #11). Insert the slide valve assembly through the top of the injector into the valve body packings (item #13), which should already be installed into the bottom of the injector body. Apply a liberal coating of grease to the piston bore in the injector body. Drop in the spring (item #9), and place the spacer (item #19) inside the spring.

5. Install the O-ring (item #7) on the piston assembly (item #8). Apply a liberal coat of grease to the piston, O-ring, and indicator rod. Place the piston assembly into the piston bore of the injector body. Install O-ring on adjustment adapter (item #3). Install washer (item #5) and packing (item #6) into adjustment adapter. Apply grease to the O-ring on the adjustment adapter and the mating bore in the top of the injector body. Carefully slide the pre-assembled adjustment adapter over indicator pin on the piston assembly (item #8), screw adjustment adapter into the injector body hand tight, then tighten with wrench. Reinstall adjustment screw (item #1) into adjustment adapter.

Trouble Shooting Chart

CONDITION	POSSIBLE CAUSE	CORRECTIVE ACTION
External leakage at body.	Damaged or worn body O-rings.	Replace O-rings (Item #4)
External leakage at fitting assembly.	Loose cap Damaged fitting	Tighten cap Replace fitting (Item #10)
External leakage at indicator rod.	Worn or damaged indicator rod packing. Worn or damaged indicator rod.	Replace packing (Item #6) Replace piston ass'y. (Item #8)
Lubricant volume to bearing LOW.	Output adjustment screw setting incorrect. Worn or damaged LOWER slide valve seal. Worn or damaged LOWER slide valve body O-ring. Plunger spring broken or worn.	Adjust to proper setting and lock with lock nut. Replace slide valve seals (Item #13) Replace O-rings and back-up rings (Items #15 & #14) Replace spring (Item #9)
Lubricant volume to bearing too HIGH.	Output adjustment screw setting incorrect. Worn or damaged UPPER slide valve seal. Worn or damaged UPPER slide valve body O-ring. Plunger spring broken. Worn or damaged slide valve ass'y.	Adjust to proper setting and lock with lock nut. Replace slide valve seals (Item #13). Replace O-rings & back-up rings (Items #15 & 14). Replace spring (Item #9). Replace slide valve ass'y. (Item #11).

RETAIN THIS INFORMATION FOR FUTURE REFERENCE

When ordering replacement parts, list: Part Number, Description, Model Number and Series Letter.
LINCOLN provides a Distributor Network that stocks equipment and replacement parts.