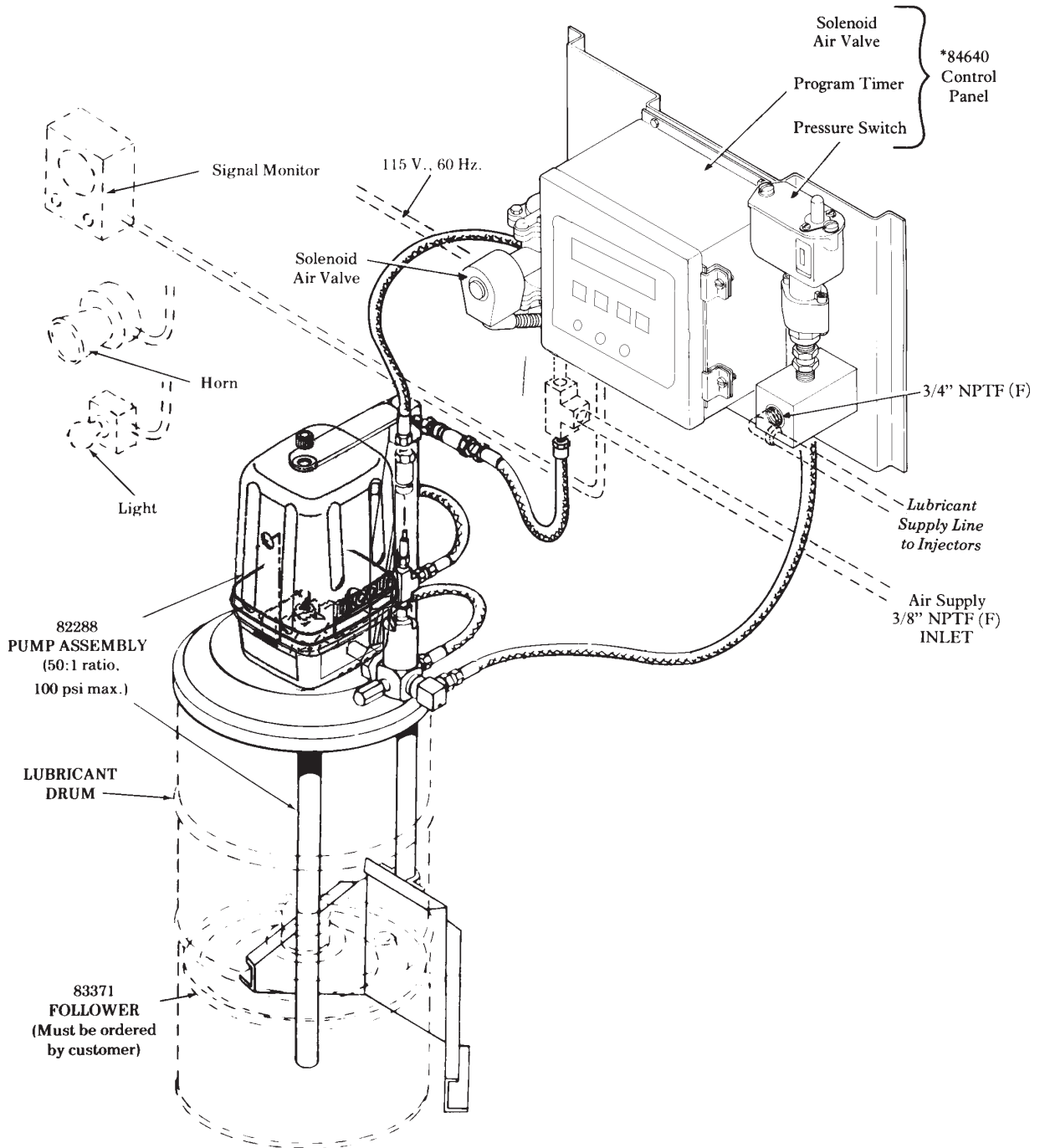
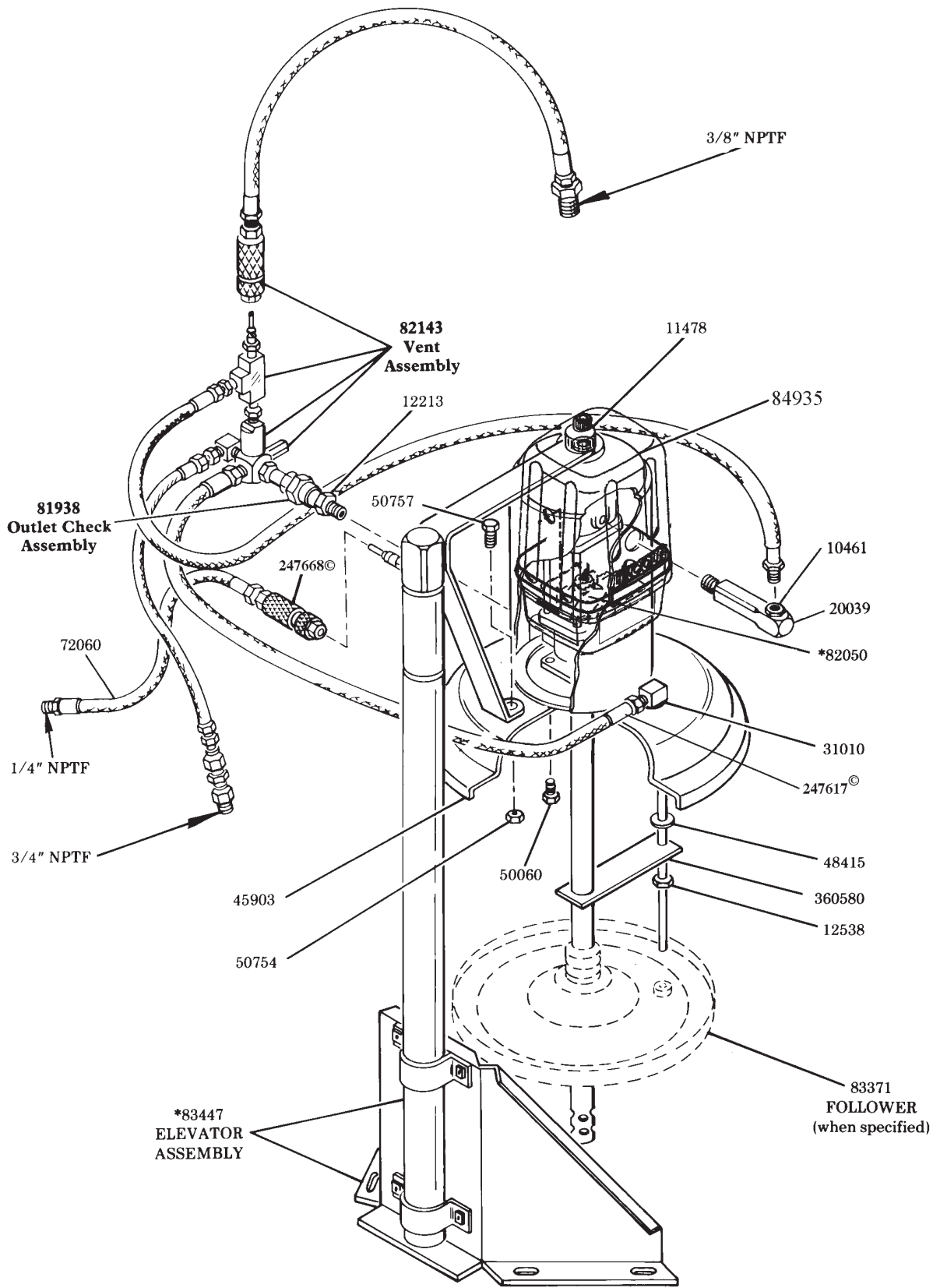


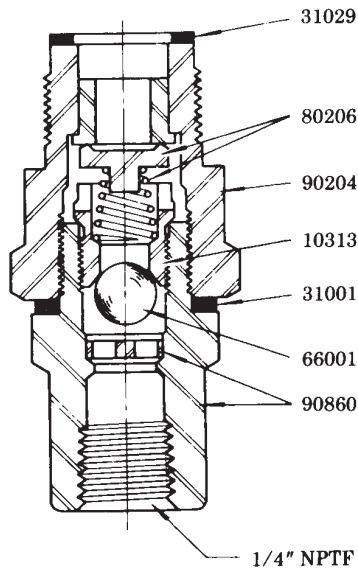
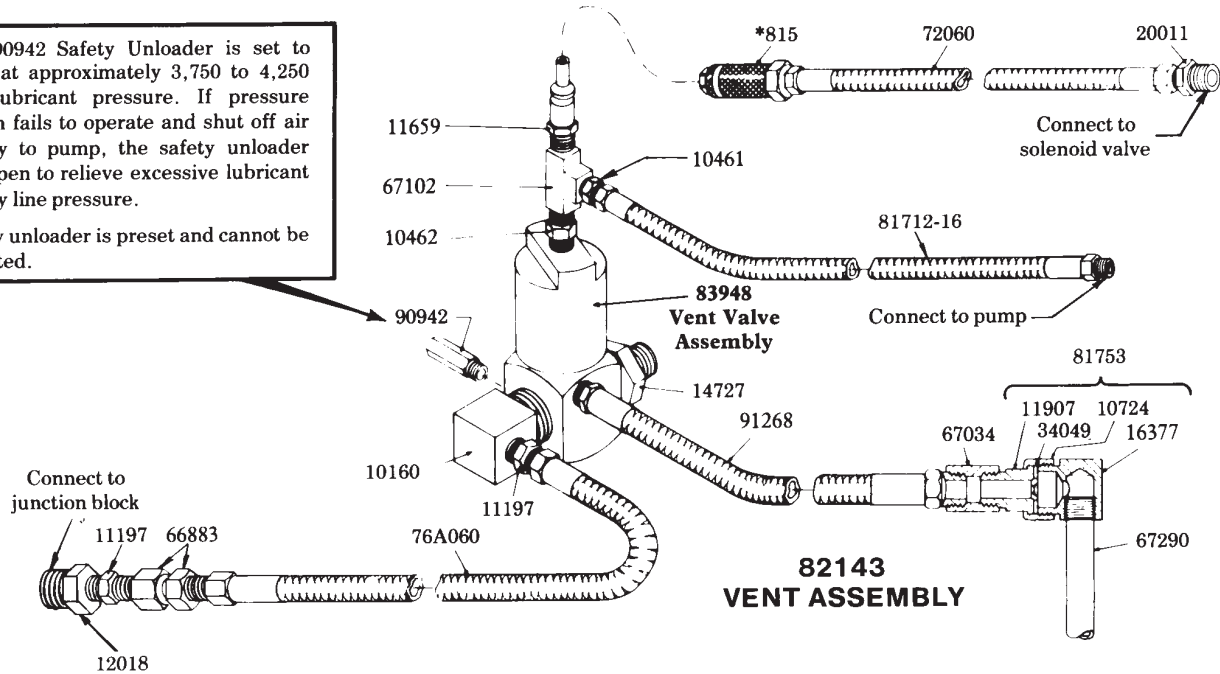
AIR OPERATED - 120 LB. DRUM SIZE  
HIGH PRESSURE 2,500 PSI SYSTEM





The 90942 Safety Unloader is set to open at approximately 3,750 to 4,250 PSI lubricant pressure. If pressure switch fails to operate and shut off air supply to pump, the safety unloader will open to relieve excessive lubricant supply line pressure.

Safety unloader is preset and cannot be adjusted.

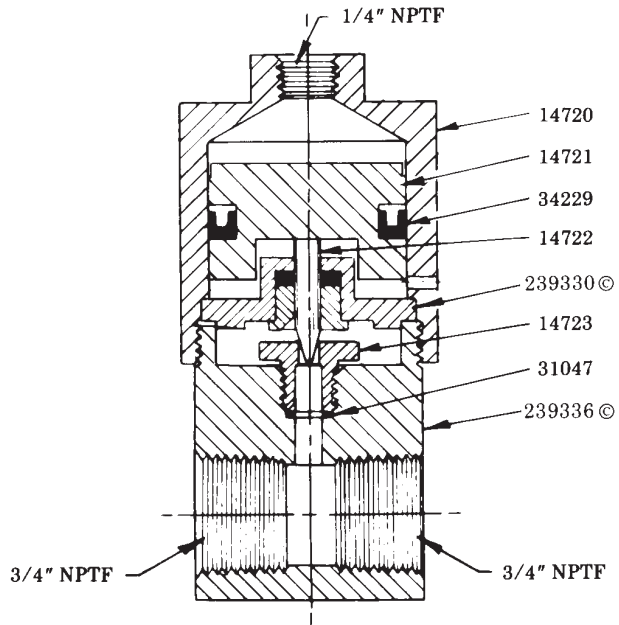


**81938  
OUTLET CHECK ASSEMBLY**

The lubrigun will not build up sufficient pressure if the outlet check is fouled. Foreign material may lodge beneath 66001 Ball Check or between 80206 Check Disc and the check seat of the 90204 Outlet Check Bushing.

Sealing surface of disc and seat must form a perfect seal.

Replace if pitted, worn or scored.



**83948  
VENT VALVE ASSEMBLY**



**———— RETAIN THIS INFORMATION FOR FUTURE REFERENCE ————**  
When ordering replacement parts, list: Part Number, Description, Model Number and Series Letter.  
LINCOLN provides a Distributor Network that stocks equipment and replacement parts.

