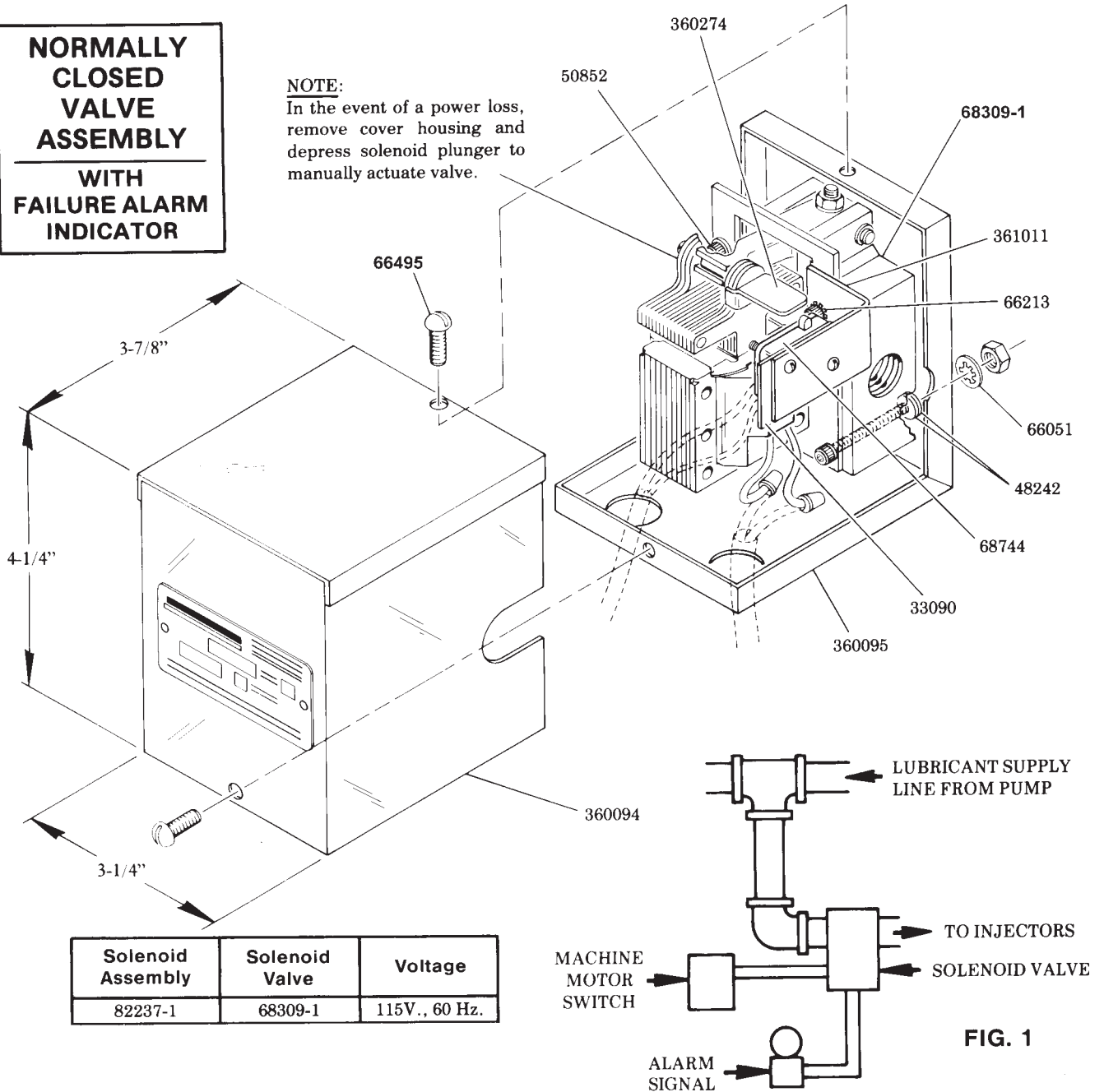


**NORMALLY
CLOSED
VALVE
ASSEMBLY
WITH
FAILURE ALARM
INDICATOR**

NOTE:
In the event of a power loss,
remove cover housing and
depress solenoid plunger to
manually actuate valve.



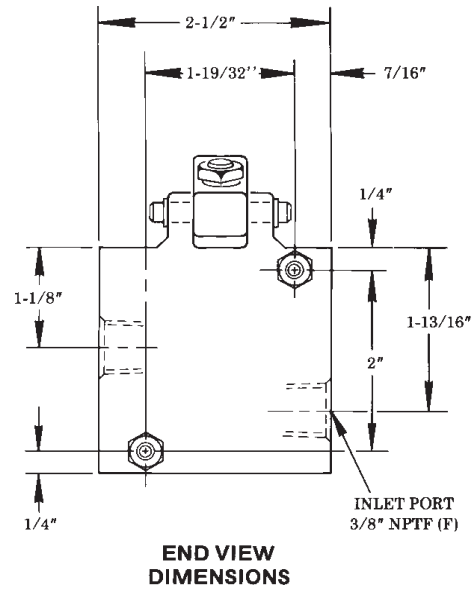
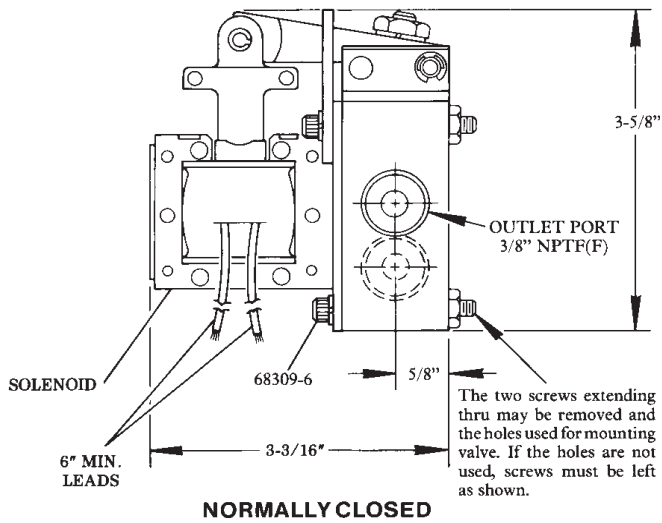
Solenoid Assembly	Solenoid Valve	Voltage
82237-1	68309-1	115V., 60 Hz.

FIG. 1

DESCRIPTION (See Fig. 1)

The two-way, normally closed solenoid valve is an accessory that can be mounted on a machine serviced by a Lincoln Centro-Matic lubrication system. This solenoid valve is controlled by the machine motor switch. When the machine is started, the solenoid valve opens admitting lubricant to the injectors. When the machine is stopped, the solenoid valve automatically shuts off lubricant flow to the injectors. (Machine is not lubricated when it is inactive.)

Included with the solenoid valve is a micro-switch that is actuated by the valve solenoid. The micro-switch can be used in a signal circuit to indicate that the valve is open and is supplying lubricant to the machine. If the valve should fail, the micro-switch will activate a warning device such as a horn or light to indicate abnormal valve action.



ADJUSTMENT PROCEDURE

To adjust for proper opening, hold solenoid plunger down by hand, loosen jam nut and turn socket head set screw in until it bottoms. Release solenoid plunger. Back off set screw until there is clearance between set screw and steel ball (minimum 1/3 turn). Contact between set screw and ball can be determined by feel when plunger is depressed slowly by hand. Tighten jam nut securely.

INSTALLATION

Locate the solenoid valve on the machine convenient for both lubricant and electrical connections. The valve will operate equally well in any position.

SEQUENCE OF OPERATION

When the solenoid is energized the valve opens. The closing of the solenoid opens Micro-Switch. If solenoid does not close completely, Micro-Switch will not open.

SERVICE PARTS

Part	Qty.	Description	Part	Qty.	Description
33090	1	Insulation	68309-1	1	Solenoid valve
48242	4	Washer	68744	1	Switch
50852	1	Screw	360094	1	Cover
66051	2	Lockwasher	360095	1	Solenoid base
66495	2	Screw	360274	1	Actuation Arm
66213	1	Lockwasher	361011	1	Bracket

RETAIN THIS INFORMATION FOR FUTURE REFERENCE

When ordering replacement parts, list: Part Number, Description, Model Number and Series Letter.
LINCOLN provides a Distributor Network that stocks equipment and replacement parts.