

Low Pressure – Set at 1,000 PSI
For Dispensing Fluid Lubricant

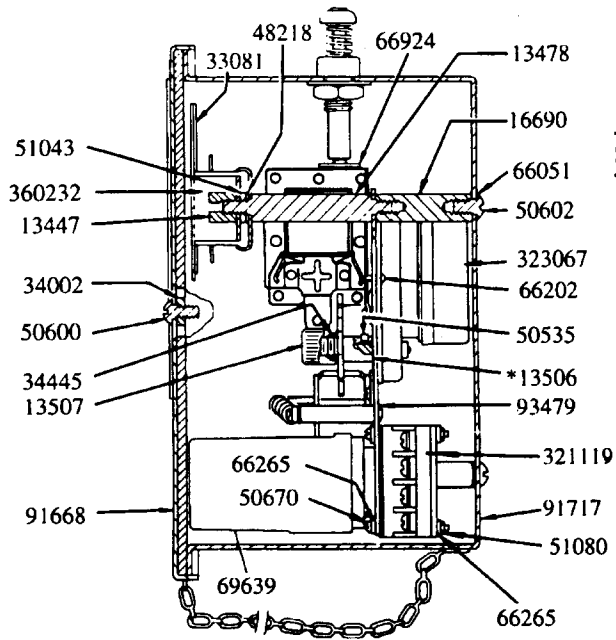
Refer to Separate Instructions:

For Installation and Operation
See Form 4359 Series.

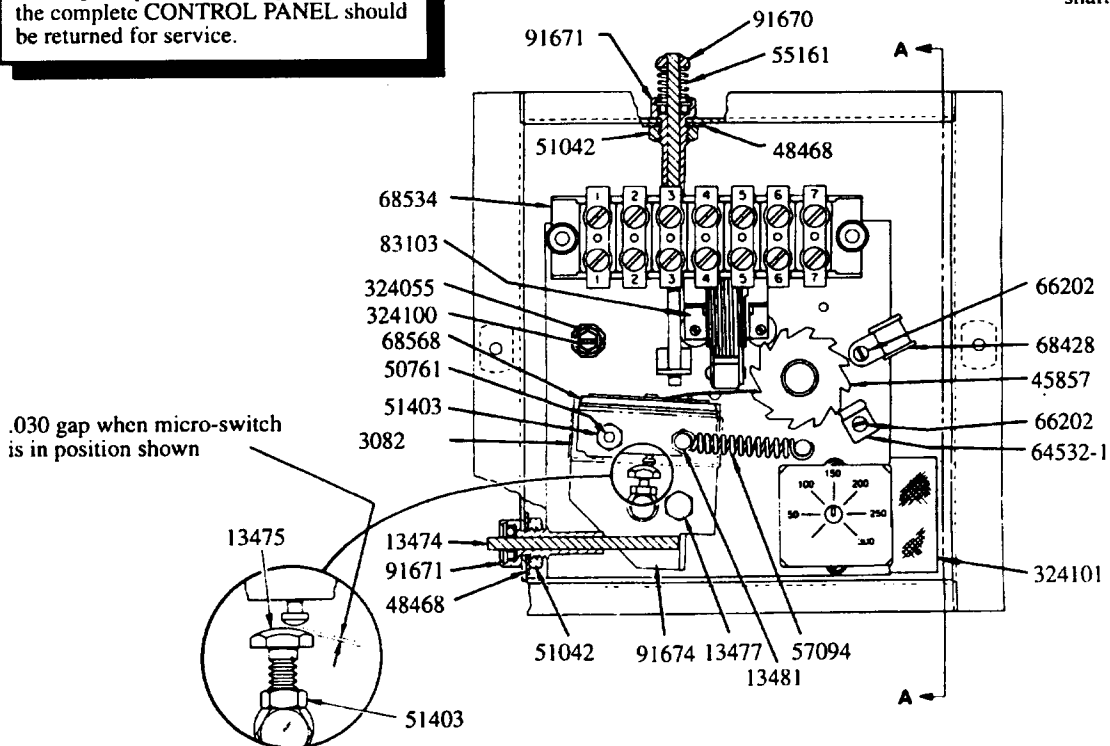
For Maintenance
See Form 4361 Series.

83104 Control Panel

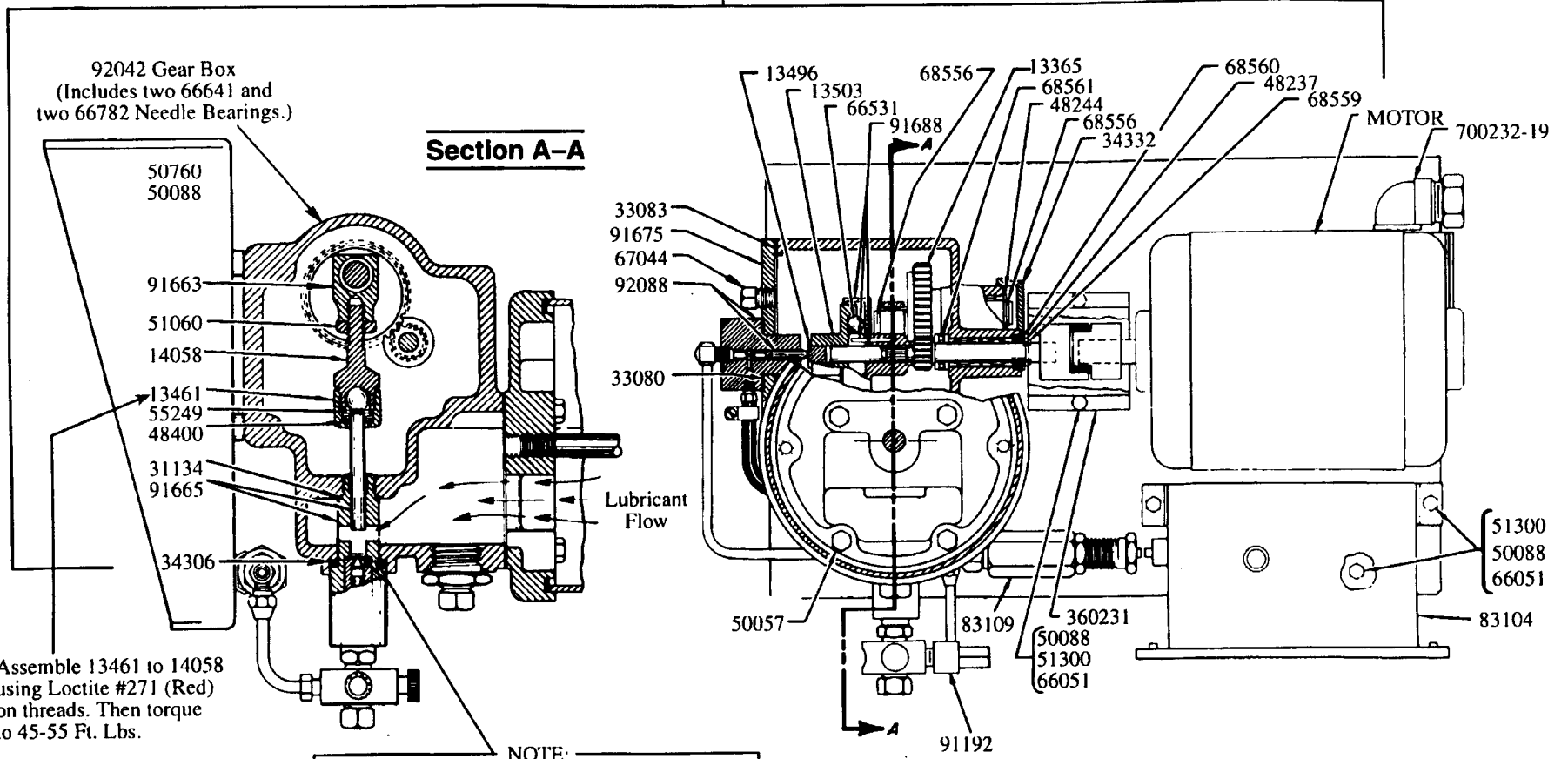
For major repairs and/or adjustments,
the complete CONTROL PANEL should
be returned for service.



*Secure to timer motor shaft with #75 Loctite

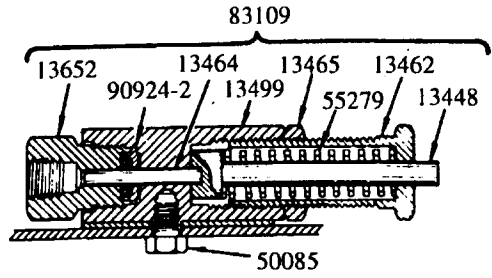


83477



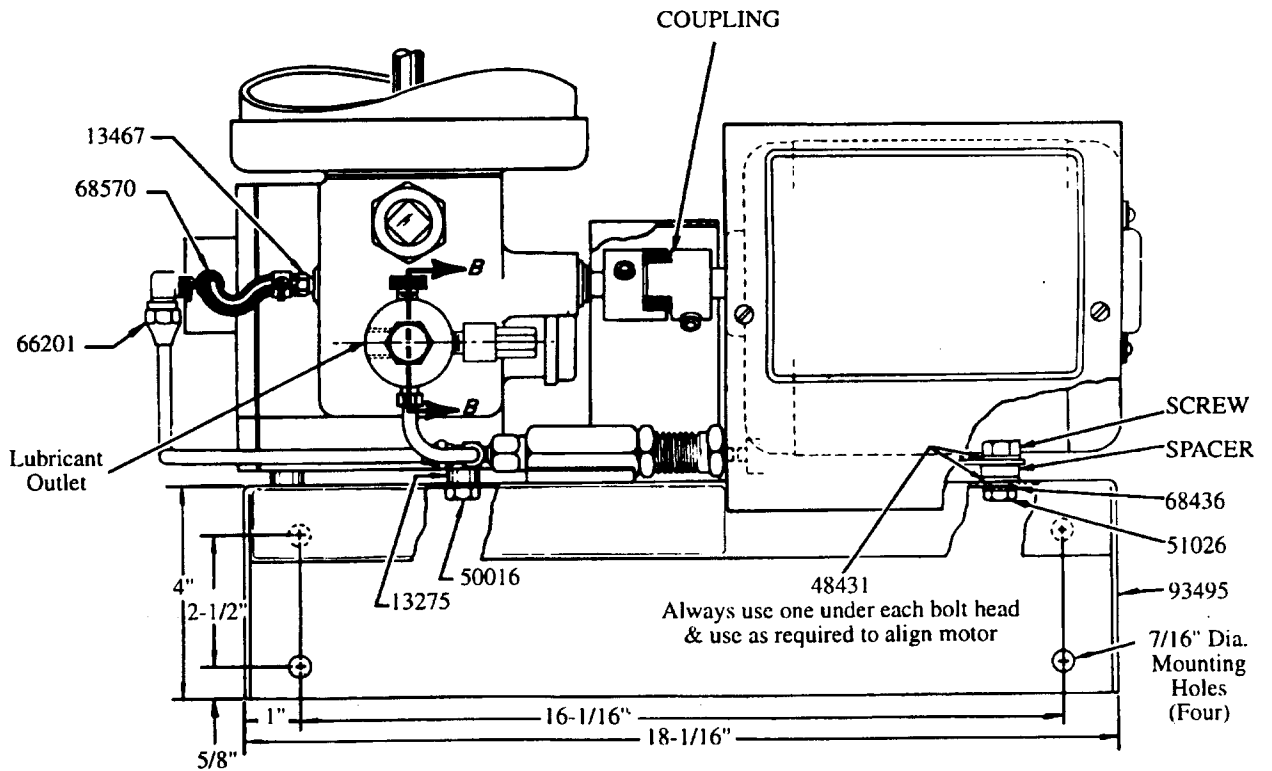
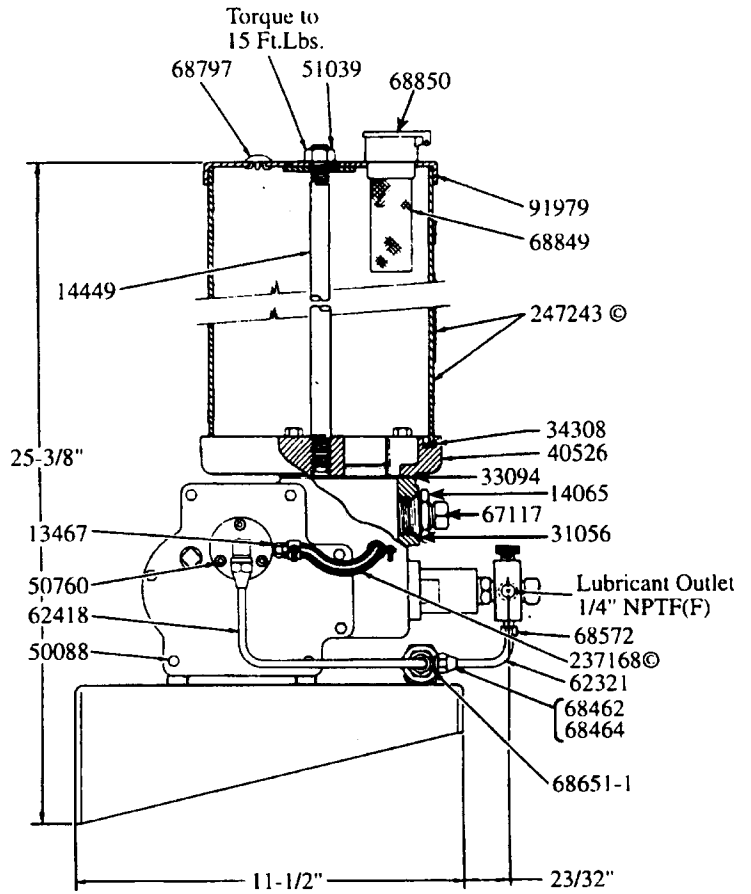
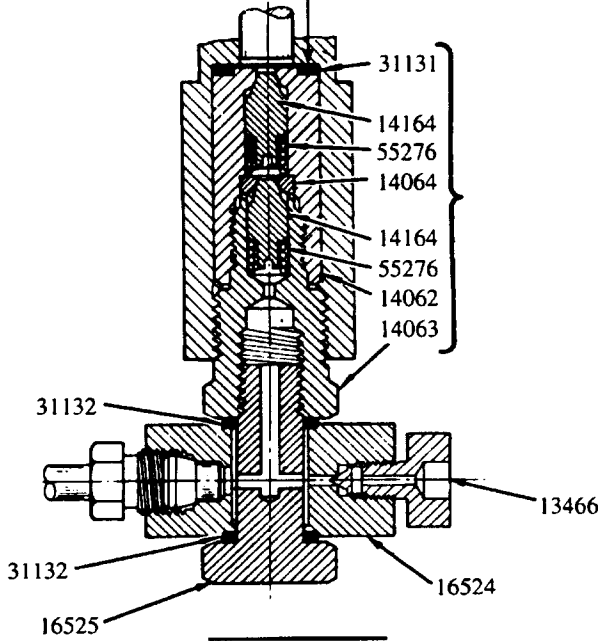
Assemble 13461 to 14058 using Loctite #271 (Red) on threads. Then torque to 45-55 Ft. Lbs.

NOTE:
Plunger gap critical:
To adjust, place eccentric in forward position. Extend plunger adjustment until plunger touches check seat then back off 1/2 turn.



Motor	Coupling	Screw	Spacer
68564 (208-220/440 V., 50/60 Hz.)	69227	50161	13482

NOTE:
Plunger gap critical:
 To adjust, place eccentric in forward position.
 Extend plunger adjustment until plunger touches
 check seat then back off 1/2 turn.



© INDICATES CHANGES

SERVICE PARTS

Part	Qty.	Description	Part	Qty.	Description	Part	Qty.	Description
13275	4	Spacer	*45857	2	Cam	68462	2	Ferrule
13365	1	Gear	48218	4	Washer	68464	2	Long nut
13447	2	Nut	48237	1	Washer	68534	1	Terminal block
13448	1	Spring Guide	48244	1	Washer	68556	2	Retaining ring
13461	1	Nut	48400	1	Washer	68559	1	Retaining ring
13462	1	Housing	48431	8	Washer	68560	1	Shaft seal
13464	1	Pin	48468	2	Washer	68561	1	Thrust bearing
12365	1	Nut	50016	4	Screw	*68568	1	Micro-switch
13466	1	Air vent screw	50057	4	Screw	68570	2	Hose clamp
13467	2	Fitting	50085	1	Screw	68572	1	Tube fitting
13474	1	Rod	50088	13	Screw	68615-1	1	Male run tee
13475	1	Screw	50535	1	Screw	68797	1	Plug button
13477	1	Bolt	50600	2	Screw	68849	1	Strainer
13478	2	Stud	50602	3	Screw	68850	1	Oil hole cover
13481	1	Nut	50607	2	Screw	*69369	1	Time delay relay
*13496	1	Thrust bearing	50670	3	Screw	83103	1	Solenoid
13499	1	Body	50760	3	Screw	83104	1	Timer assembly
*13503	1	Centrifugal cam	50761	2	Screw	83109	1	Pressure control ass'y
13506	1	Cam shaft	51026	4	Nut	83477	1	Gear box assembly
13507	1	Knob	51039	1	Nut	83530	1	Check assembly
13652	1	Adapter	51042	2	Nut	90924-2	1	Packing
14058	1	Connecting rod	51043	2	Nut	91192	1	Unloader assembly
14062	1	Body	51060	1	Locknut	91663	1	Crank head
14063	1	Cap	51080	2	Nut	91665	1	Plunger & bushing
*14064	1	Seat	51300	6	Nut	91668	1	Gear & ball housing
14065	1	Adapter	51403	2	Nut	91670	1	Rod
*14164	2	Check valve	55161	1	Spring	91671	2	Bushing
14449	1	Tie rod	55249	1	Spring	91674	1	Sleeve & plate
16524	1	Outlet connector	55276	2	Spring	91675	1	Cover
16525	1	Outlet bolt	55279	1	Spring	91688	1	Gear & ball housing
16690	1	Spacer	57094	1	Spring	91717	1	Electrical box
31059	1	Gasket	62321	1	Tubing	91979	1	Reservoir cap
*31131	1	Gasket	62418	1	Tubing	92042	1	Gear box
31132	2	Gasket	64532-1	1	Clip	92088	1	Needle & vent body
31134	1	Gasket	66051	9	Lockwasher	93479	1	Electrical panel
*33080	1	Gasket	66201	1	90° Tube connector	93495	1	Base
33081	1	Insulator	66202	4	Screw	237168	1	Hose
33082	1	Insulator	66265	4	Lockwasher	247243	1	Reservoir (Acrylic)
33083	1	Gasket	66531	9	Ballwasher	*321119	1	Octal socket
33094	1	Gasket	66641	2	Ball	323067	1	Timer motor
34002	2	Packing (Nitrile)	66782	1	Needle bearing	324055	1	Lockwasher
34306	1	Packing (Nitrile)	66924	1	Retaining ring	324100	1	Grounding screw
*34308	1	Gasket (Nitrile)	67044	1	Plug	324101	1	Insulator
*34332	1	Shaft seal (Nitrile)	67117	1	Plug	360231	1	Guard
34445	1	Gasket (Nitrile)	68428	1	Clamp	360232	1	Cover
40526	1	Reservoir casting	68436	4	Lockwasher	700232-19	1	90° Conduit adapter

*Recommended Service Parts Inventory

Optional 83696 Low Level Cut-Off Kit may be used to signal low lubricant in reservoir. Refer to Service Manual Section K3, Page 1 Series.

RETAIN THIS INFORMATION FOR FUTURE REFERENCE

When ordering replacement parts, list: Part Number, Description, Model Number and Series Letter.
LINCOLN provides a Distributor Network that stocks equipment and replacement parts.