

**HIGH PRESSURE - SET AT 2,500 PSI
FOR DISPENSING GREASE**

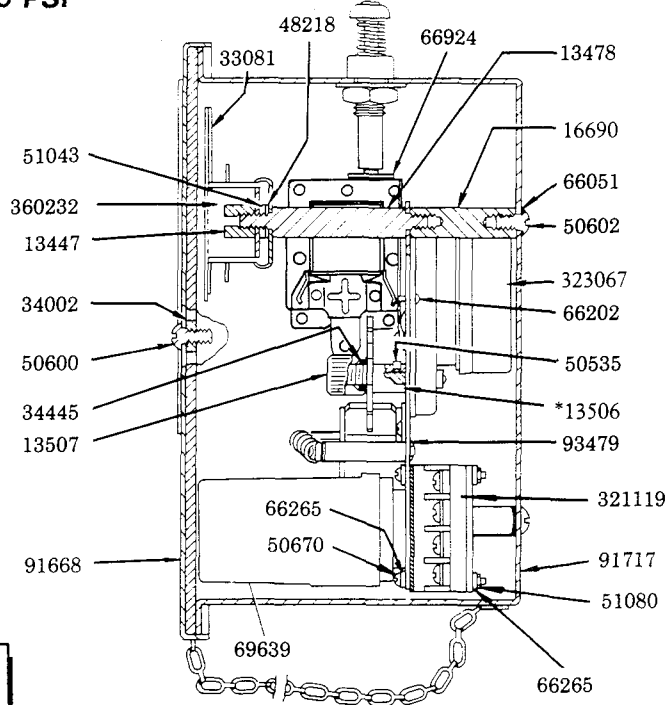
REFER TO SEPARATE INSTRUCTIONS:

For Installation and Operation
See Form 4360 Series.

For Maintenance
See Form 4361 Series.

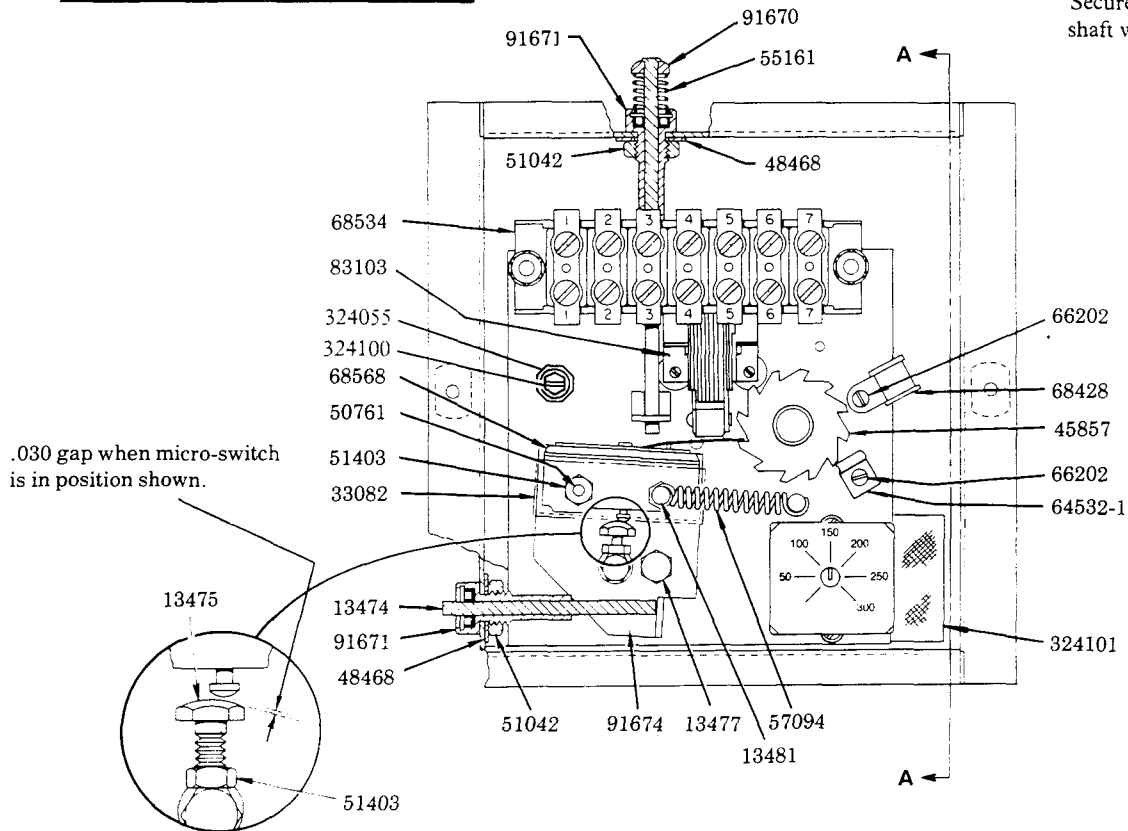
83104 CONTROL PANEL

For major repairs and/or adjustments,
the complete CONTROL PANEL should
be returned for service.



SECTION A-A

*Secure to timer motor
shaft with #75 Loctite.



.030 gap when micro-switch
is in position shown.

SERVICE PARTS

Part	Qty.	Description	Part	Qty.	Description	Part	Qty.	Description
13275	4	Spacer	40526	1	Reservoir casting	68462	2	Ferrule
13365	1	Gear	*45857	2	Cam	68464	2	Long nut
13447	2	Nut	48218	4	Washer	68528	1	Strainer
13448	1	Spring guide	48237	1	Washer	68534	1	Terminal block
13461	1	Nut	48244	1	Washer	68556	2	Retaining ring
13462	1	Housing	48400	1	Washer	68559	1	Retaining ring
*13464	1	Pin	48417	1	Washer	*68560	1	Shaft seal
13465	1	Nut	48431	8	Washer	*68561	1	Thrust bearing
13466	1	Air vent screw	48468	2	Washer	*68568	1	Micro-switch
13467	2	Fitting	50016	4	Screw	68570	2	Hose clamp
13474	1	Rod	50057	4	Screw	68572	1	Tube fitting
13475	1	Screw	50085	1	Screw	68615-1	1	Male run tee
13477	1	Bolt	50088	13	Screw	68797	1	Plug button
13478	2	Stud	50535	1	Set screw	69034	1	Snap ring
13481	1	Nut	50600	2	Screw	*69639	1	Time delay relay
*13496	1	Thrust bearing	50602	3	Screw	71905-1	1	Hose
13499	1	Body	50607	2	Screw	82978	1	Pressure control ass'y.
*13503	1	Centrifugal cam	50670	2	Screw	83103	1	Solenoid
13506	1	Cam shaft	50760	3	Screw	83104	1	Timer assembly
13507	1	Knob	50761	2	Screw	83477	1	Gear box assembly
13652	1	Adapter	51026	4	Nut	83530	1	Check assembly
14058	1	Connecting rod	51039	1	Nut	*90924-2	1	Packing
*14062	1	Body	51042	2	Nut	*90942	1	Unloader
14063	1	Cap	51043	2	Nut	91663	1	Crank head
*14064	1	Seat	51060	1	Locknut	*91665	1	Plunger & bushing
14065	1	Adapter	51080	2	Nut	*91668	1	Cover & gasket
*14164	2	Check valve	51300	6	Nut	91670	1	Rod
14491	1	Retainer washer	51403	2	Nut	91671	2	Bushing
16524	1	Outlet connector	55161	1	Spring	91674	1	Sleeve & plate
16525	1	Outlet bolt	*55249	1	Spring	91675	1	Cover
16690	3	Spacer	*55276	2	Spring	91688	1	Gear & ball housing
*31056	1	Gasket	*55277	1	Spring	91717	1	Electrical box
*31131	1	Gasket	55346	1	Spring	91817	1	Reservoir cap
*31132	2	Gasket	57094	1	Spring	92042	1	Gear box
*31134	1	Gasket	62321	1	Tubing	*92088	1	Needle & vent body
*33080	1	Gasket	62418	1	Tubing	92242	1	Bushing & washer
33081	1	Insulator	64532-1	1	Clip	92441	1	Filler fitting
33082	1	Insulator	66051	9	Lockwasher	93479	1	Electrical panel
*33083	1	Gasket	66201	1	90° Tube connector	93495	1	Base
*33094	1	Gasket	66202	4	Screw	321119	1	Octal socket
34002	2	Gasket	66265	4	Lockwasher	323067	1	Timer motor
*34122	1	Packing	*66531	9	Ball	324055	1	Lockwasher
*34166	1	O-ring	66641	2	Needle bearing	324100	1	Grounding screw
*34306	1	Packing	66782	2	Needle bearing	324101	1	Insulator
*34308	1	Gasket	66924	1	Retaining ring	360231	1	Guard
*34332	1	Shaft seal	67044	1	Plug	360232	1	Cover
*34438	1	Follower	68428	1	Clamp	700232-19	1	90° Conduit adapter
34445	1	Gasket	68436	4	Lockwasher			

*Recommended Service Parts Inventory.

Optional 83671 Low Level Cut-Off Kit may be used to signal low lubricant level in reservoir.

Refer to Service Manul Section K3, Page 1 Series.

RETAIN THIS INFORMATION FOR FUTURE REFERENCE

When ordering replacement parts, list: Part Number, Description, Model Number, and Series Letter.

LINCOLN provides a Distributor Network that stocks equipment and replacement parts.