

NEMA™ TYPE 1" General purpose enclosures are used for air valve and timer.

Model 83217 includes ONE HOUR TIMER, 68720 and SOLENOID AIR VALVE, 68722  
 Model 83218 includes TEN MINUTE TIMER, 68721 and SOLENOID AIR VALVE, 68722

The base of the timer is designed for direct attachment to a standard electrical outlet box and includes a terminal strip for making the wire connections.

A wiring diagram is on the inside of the timer lid. The solenoid air valve can be mounted to any reasonably flat surface.

Rigid or flexible conduit (depending on the installation) is to be used for connecting the 3-way air valve to the electrical outlet box supporting the timer.

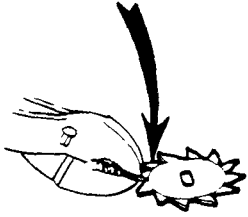
### WIRING DIAGRAM

### OPERATION

The timer includes a clock motor, driving a star shaped cam which trips the arm of the micro-switch. This energizes the 3-way solenoid valve, thus activating the ram pump.

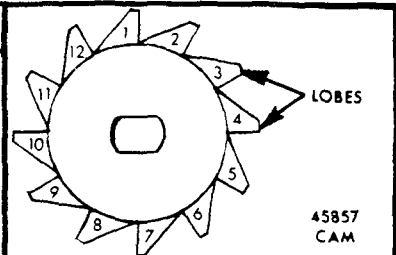
See diagram on back page for cam adjustment and frequency of lubrication cycles.

The cam has an indented ring at the base of the lobes which allows the lobes to be removed by bending with pliers until they break off.



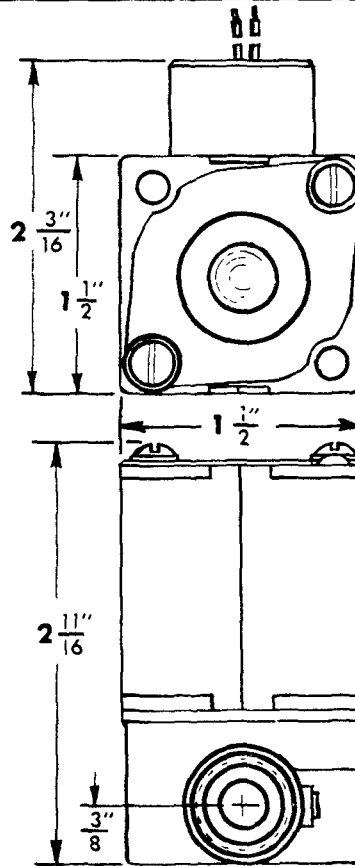
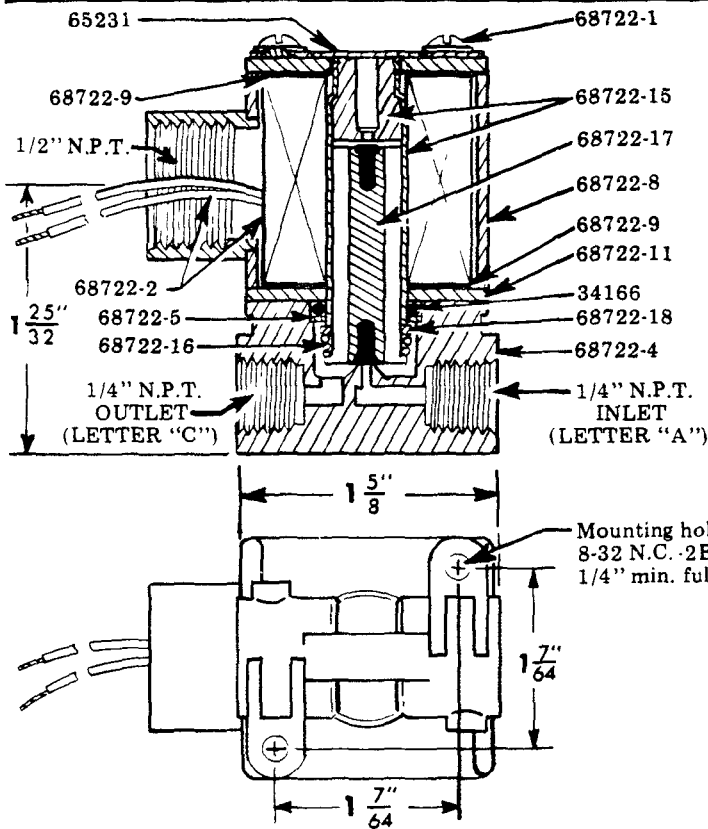
### ADJUSTMENT OF CAM

ONE HOUR TIMER MODEL 68720	TEN MINUTE TIMER MODEL 68721
TO OBTAIN A TIMING INTERVAL OF	
5 MINUTES	50 SECONDS
10 MINUTES	1 1/2 MINUTES
15 MINUTES	2 1/2 MINUTES
20 MINUTES	3 1/2 MINUTES
30 MINUTES	5 MINUTES
1 HOUR	10 MINUTES



45857  
CAM

TO OBTAIN A TIMING INTERVAL OF		REMOVE TEETH NO.
5 MINUTES	50 SECONDS	NONE
10 MINUTES	1 1/2 MINUTES	1-3-5-7-9-11
15 MINUTES	2 1/2 MINUTES	1-2-4-5-7-8-10-11
20 MINUTES	3 1/2 MINUTES	1-2-3-5-6-7-9-10-11
30 MINUTES	5 MINUTES	1-2-3-4-5-7-8-9-10-11
1 HOUR	10 MINUTES	1-2-3-4-5-6-7-8-9-10-11



AVAIL

### SERVICE PARTS

Part	Description	Part	Description	Part	Description
13507	Knob	68722	3-way solenoid valve	68722-11	Plate
13805	Cam shaft	68722-1	8-32 x 2" round hd. screw	68722-15	Plunger housing assembly
34166	"O" ring	68722-2	Coil	68722-16	Spring
34445	Gasket	68722-4	Body	68722-17	Plunger assembly
45857	Cam	68722-5	Spacer	68722-18	Teflon washer
50535	Set screw	68722-8	Conduit assembly		
65231	Identification plate	68722-9	Insulating washer		

### RETAIN THIS INFORMATION FOR FUTURE REFERENCE

When ordering replacement parts, list: Part Number, Description, Model Number, and Series Letter.

LINCOLN provides a Distributor Network that stocks equipment and replacement parts.