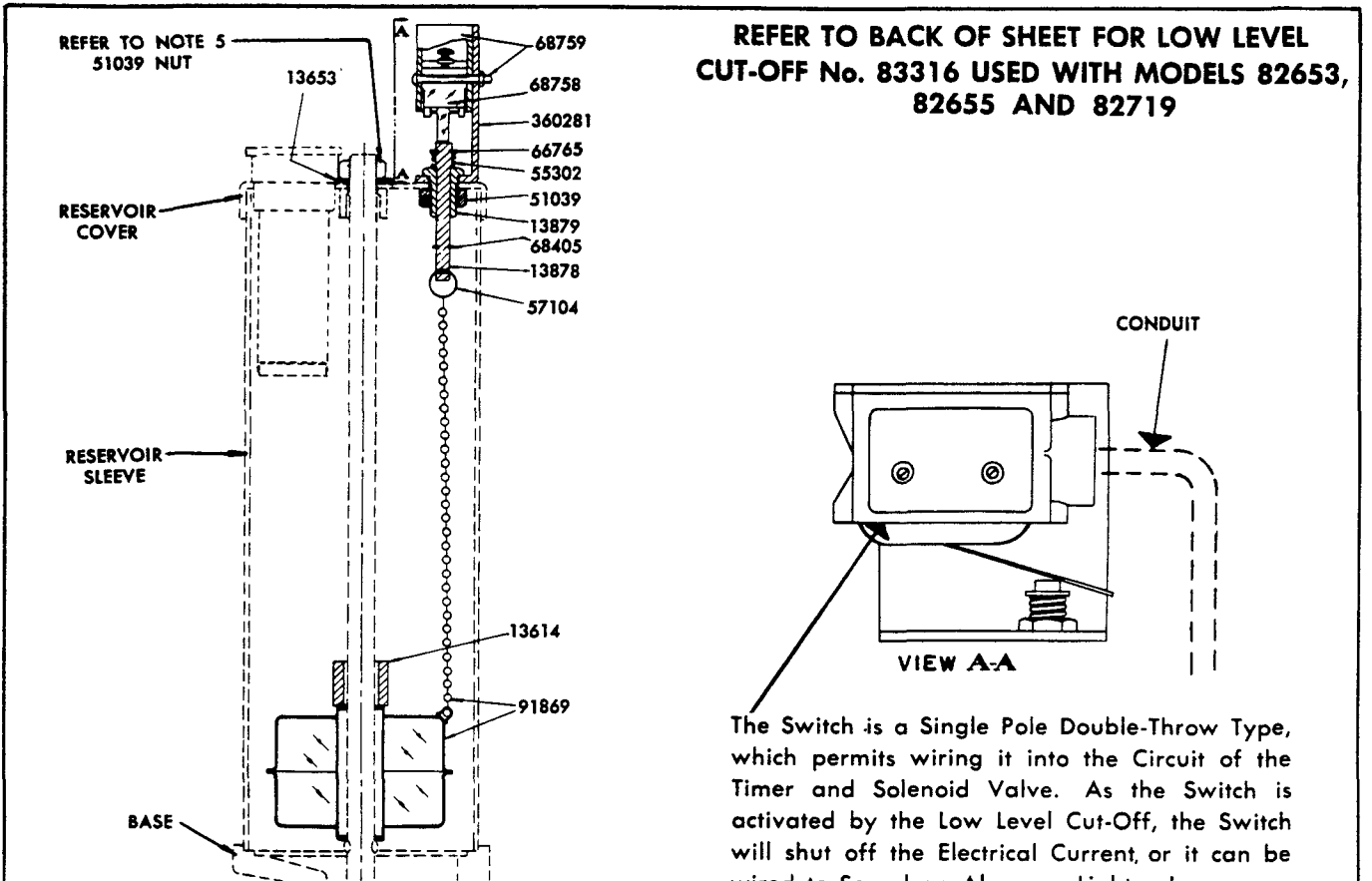


LOW LEVEL CUT-OFF

FOR MODELS 82570, 82571 AND 82573 LUBRIGUNS
DISPENSING FLUID LUBRICANTS

Models **83315**
83316
INSTALLATION
OPERATION
AND REPAIR PARTS



OPERATION

When Fluid Level in Reservoir drops below a set Level the Float Chain actuates the Single Pole Double Throw Micro-Switch 68758 mounted on the Reservoir Cover.

INSTALLATION OF LOW LEVEL CUT-OFF 83315

- 1 - Remove Tie Rod Nut 51039, Reservoir Cover and Sleeve.
- 2 - Remove Snap Button from Hole in Cover.
Note: On Models that use a Cover Cap Casting, it will be necessary to replace with a Metal Cover.
- 3 - Remove Hex. Nut from Bushing on Switch Bracket, insert Switch Rod through Cover hole and replace Hex. Nut to hold Switch Bracket securely to Cover.
- 4 - Assemble Split ring of Float Chain to cross hole of Switch Rod.
- 5 - Replace Reservoir Sleeve, Slide Float over Tie rod, place Spacer Collar 13614 on Tie Rod. Hold Cover to Sleeve by assembling Spacer 13653 and Hex. Nut 51039 to Tie Rod.

Use Torque Wrench set at 15 foot pounds when tightening 51039 Hex Nut.

REPAIR PARTS LIST

Part No.	Description	Part No.	Description	Part No.	Description
13614	Spacer	55302	Spring	68759	Terminal Enclosure
13653	Spacer	57104	Ring	91869	Float Assembly
13878	Rod	66765	Tru-Arc	360281	Bracket
13879	Bushing	68405	Tru-Arc		
51039	Hex. Nut	68758	Micro-Switch		

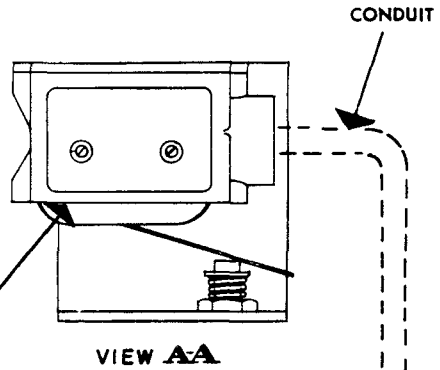
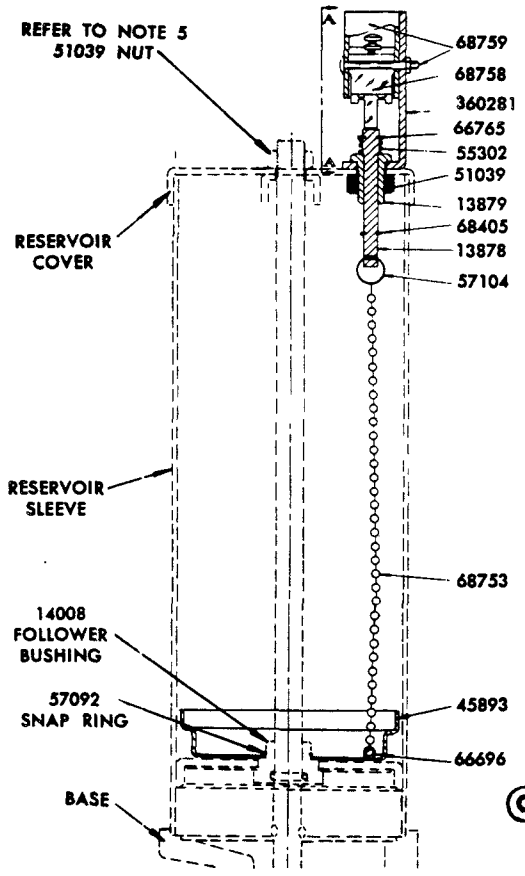


LINCOLN, One Lincoln Way
St. Louis, Missouri 63120-1578
(314) 679-4200 Customer Service, (314) 679-4300

SECTION - C8
PAGE - 87 A

LOW LEVEL CUT-OFF NO. 83316 FOR MODELS 82653, 82655 AND 82719 LUBRIGUNS FOR DISPENSING GREASE LUBRICANTS

(C) INDICATES NOTE ADDED



The Switch is a Single Pole Double-Throw Type, which permits wiring it into the Circuit of the Timer and Solenoid Valve. As the Switch is activated by the Low Level Cut-Off, the Switch will shut off the Electrical Current, or it can be wired to Sound an Alarm or Light a Lamp.

(C) ***NOTE:**
When installing No. 83316 Low Level Cut-Off Kit, it will be necessary to remove and discard 55270 Follower Spring from reservoir.

OPERATION

When Grease level in Reservoir drops below a set level, the Follower will draw the Chain downwards to actuate the Single Pole Double Throw Micro-Switch 68758 Mounted on the Reservoir Cover.

INSTALLATION OF LOW LEVEL CUT-OFF 83316

- 1 - Remove Tie Rod Nut 51039, Reservoir Cover, *Follower Spring 55270, Reservoir Sleeve and the Follower assembly.
- 2 - Remove Snap Ring 57092 from the Follower Bushing 14008 and replace Follower Guide 45841 with the new Follower Guide 45893 with attached Chain. Replace Snap Ring.
- 3 - Remove Snap Button from hole in Cover.
NOTE: On Models that use a Cover Cap Casting, it will be necessary to replace with a Metal Cover. Remove Hex. Nut from Bushing on Switch Bracket, insert Switch Rod through Cover hole and replace Hex. Nut to hold Switch Bracket securely to Cover.
- 4 - Assemble Split Ring 57104 of Follower Guide Chain through cross hole in Switch Rod 13878.
- 5 - Replace Reservoir Sleeve, slide Follower Assembly over Tie Rod, hold Reservoir Cover to Sleeve by Assembling Hex. Nut 51039 to Tie Rod.
Use Torque Wrench set at 15 foot pounds when tightening 51039 Hex. Nut.

REPAIR PARTS LIST

Part No.	Description	Part No.	Description	Part No.	Description
13878	Rod	57104	Ring	68758	Micro-Switch
13879	Bushing	66696	Sleeve	68759	Terminal Enclosure
45893	Follower Guide	66765	Tru-Arc	360281	Bracket
51039	Hex. Nut	68405	Tru-Arc		
55302	Spring	68753	Chain		

RETAIN THIS INFORMATION FOR FUTURE REFERENCE

When ordering Replacement Parts, List Part Numbers, Descriptions, Model Number, & Series Letter.
LINCOLN ST. LOUIS — Provides a Distributor network that stocks equipment and replacement parts.
Repairs by Authorized Service Depts. List furnished upon request.