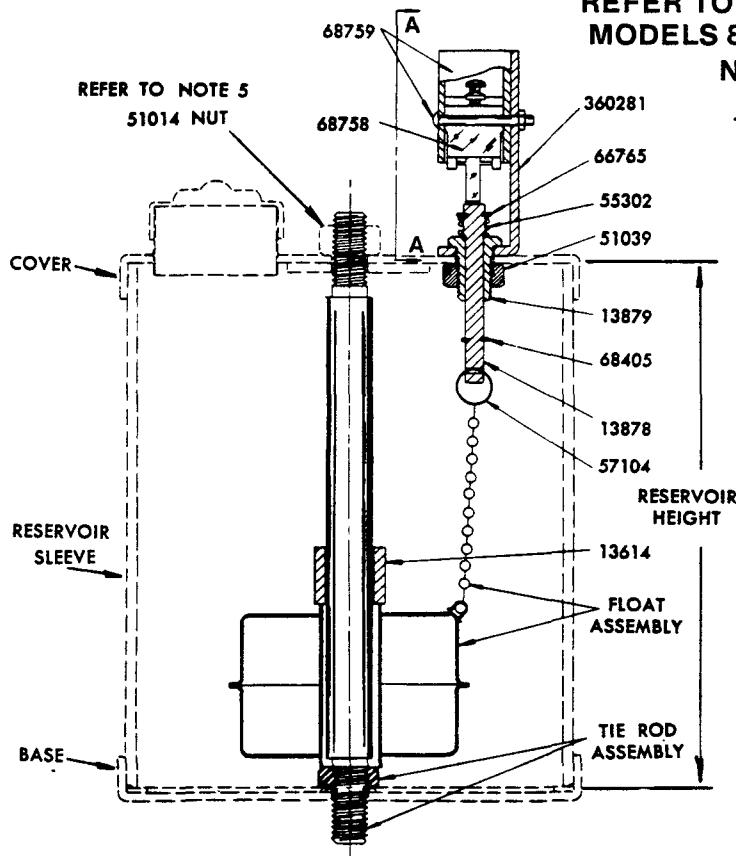


INSTALLATION, OPERATION AND REPAIR PARTS

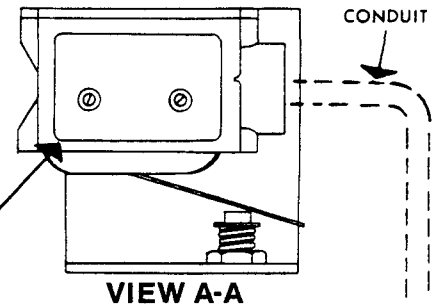
FOR MODEL 1848 ELECTRO-LUBER
DISPENSING FLUID LUBRICANTS

REFER TO BACK OF SHEET FOR LOW LEVEL CUT-OFF
MODELS 83318 AND 83473 USED WITH MODEL 1849

NOTE: THE LOW LEVEL CUT-OFF MODELS 83317 and
83472 ARE IDENTICAL EXCEPT FOR THE FLOAT AND
TIE ROD ASSEMBLIES.



LOW LEVEL CUT-OFF MODELS	FLOAT ASSEMBLY	TIE ROD ASSEMBLY	RESERVOIR HEIGHT
83317	91870	91871	7 $\frac{3}{8}$ "
83472	92039	92040	15"



The Switch is a Single Pole Double-Throw Type, which permits wiring it into the Circuit of the Holding Coil on the Motor Starter. As the Switch is activated by the Low Level Cut-Off, the Switch will shut off the Electrical Current, or it can be wired to Sound an Alarm or Light a Lamp.

OPERATION

When Fluid Level in Reservoir drops below a set Level the Float Chain actuates the Single Pole Double Throw Micro-Switch 68758 mounted on the Reservoir Cover.

INSTALLATION OF LOW LEVEL CUT-OFF 83317 AND 83472

- 1 - Remove Hex. Nut, Reservoir Cover and Sleeve.
- 2 - Remove and discard the Tie Rod and replace with the new Tie Rod (See chart). (Hex portion of Rod towards Reservoir Base and tighten securely). Remove Snap Button from hole in Cover.

NOTE: If Cover does not have a snap Button Covered hole, a 35/64" dia. hole must be drilled through the Cover on the same axis as the Filler opening and located 1 $\frac{3}{4}$ " from center of the Tie Rod Hole. New style Covers are available.

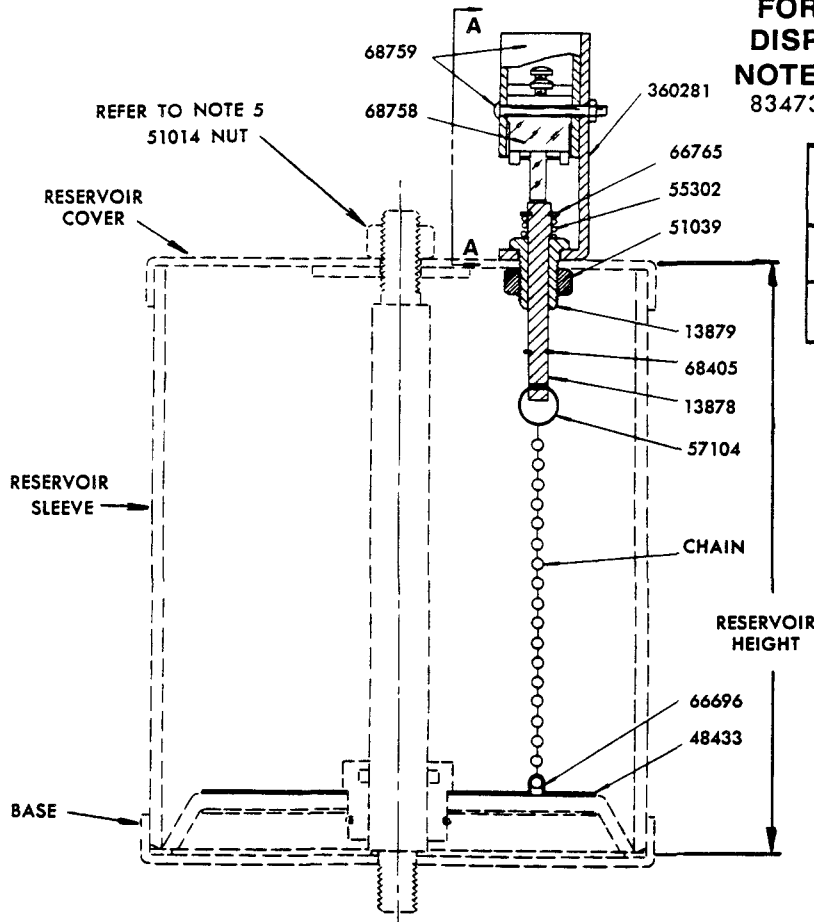
- 3 - Remove Hex. Nut from Bushing on Switch Bracket, insert Switch Rod through Cover Hole and replace Hex. Nut to hold Switch Bracket securely to Cover.
- 4 - Assemble Split Ring of Float Chain to Cross hole of Switch Rod.
- 5 - Replace Reservoir Sleeve. Slide Float over Tie Rod, place Spacer Collar 13614 on Tie Rod. Hold Cover to Sleeve by assembling Hex. Nut to Tie Rod. Use Torque Wrench set at 15-foot pounds when tightening 51014 Hex. Nut.

REPAIR PARTS LIST

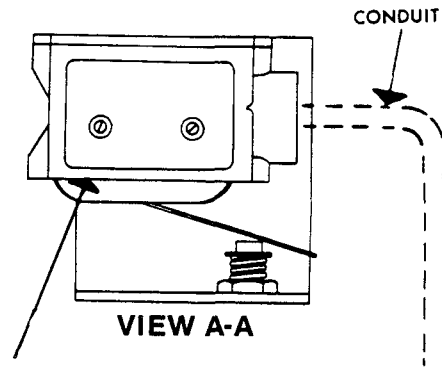
Part	Description	Part	Description	Part	Description
13614	Spacer	57104	Ring	91870	Float Assembly
13878	Rod	66765	Tru-Arc	91871	Tie Rod Assembly
13879	Bushing	68405	Tru-Arc	92039	Float Assembly
51039	Nut	68758	Micro-Switch	92040	Tie Rod Assembly
55302	Spring	68759	Terminal Enclosure	360281	Bracket

LOW LEVEL CUT-OFF No. 83318 AND 83473 FOR MODEL 1849 ELECTRO-LUBER DISPENSING GREASE LUBRICANTS.

NOTE: THE LOW LEVEL CUT-OFF MODELS 83318 and 83473 ARE IDENTICAL EXCEPT FOR THE CHAINS.



LOW LEVEL CUT-OFF MODELS	CHAIN	RESERVOIR HEIGHT
83318	68754	7 $\frac{3}{8}$ "
83473	68891	15"



The Switch is a Single Pole Double-Throw Type, which permits wiring it into the Circuit of the Holding Coil on the Motor Starter. As the Switch is activated by the Low Level Cut-Off, the Switch will shut off the Electrical Current, or it can be wired to Sound an Alarm or Light a Lamp.

OPERATION

When Grease Level in Reservoir drops below a set Level, the Follower will draw the Chain downwards to actuate the Single Pole Double Throw Micro-Switch 68758 mounted on the Reservoir Cover.

INSTALLATION OF LOW LEVEL CUT-OFF 83318 AND 83473

- 1 — Remove Hex. Nut, Reservoir Cover, Follower Spring, Reservoir Sleeve and the Follower Assembly. (Follower Spring is not used with Low Level Cut-Off).
- 2 — Dismantle the Follower Assembly and replace the Top Metal Washer with the new Washer with attached Chain.
- 3 — Remove Snap Button from hole in Cover.
NOTE: If Cover does not have a snap Button Covered hole, a 35/64" dia. hole must be drilled through the Cover located 1 $\frac{3}{4}$ " from center of Tie Rod Hole. New style Covers are available.
 Remove Hex. Nut from Bushing of Switch Bracket, insert Switch Rod through Cover Hole and replace Hex. Nut to hold Switch Bracket securely to Cover.
- 4 — Assemble Split Ring of Follower Plate Chain to Cross hole in Switch Rod.
- 5 — Replace Reservoir Sleeve, Insert Follower, and hold Reservoir Cover to Sleeve by assembling Hex. Nut to Tie Rod. Use Torque Wrench set at 15-foot pounds when tightening 51014 Hex. Nut.

REPAIR PARTS LIST

Part	Description	Part	Description	Part	Description
13878	Rod	57104	Ring	68758	Micro-Switch
13879	Bushing	66696	Sleeve	68759	Terminal Enclosure
48433	Follower Washer	66765	Tru-Arc	68891	Chain
51039	Nut	68405	Tru-Arc	360281	Bracket
55302	Spring	68754	Chain		

RETAIN THIS INFORMATION FOR FUTURE REFERENCE

When ordering replacement parts, list: Part Number, Description, Model Number, and Series Letter.

LINCOLN provides a Distributor Network that stocks equipment and replacement parts.