

FOR DISPENSING OIL ONLY SPECIFICATIONS

OUTPUT: Adjustable from .001 cu. in. to .003 cu. in.

OPERATING PRESSURE:.....750 psi to 1000 psi

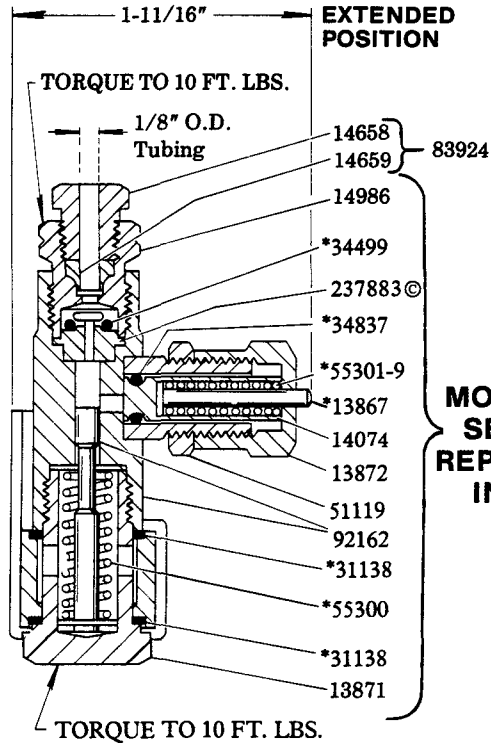
RECOMMENDED OPERATING PRESSURE:... 850 psi

RECHARGE PRESSURE:150 psi

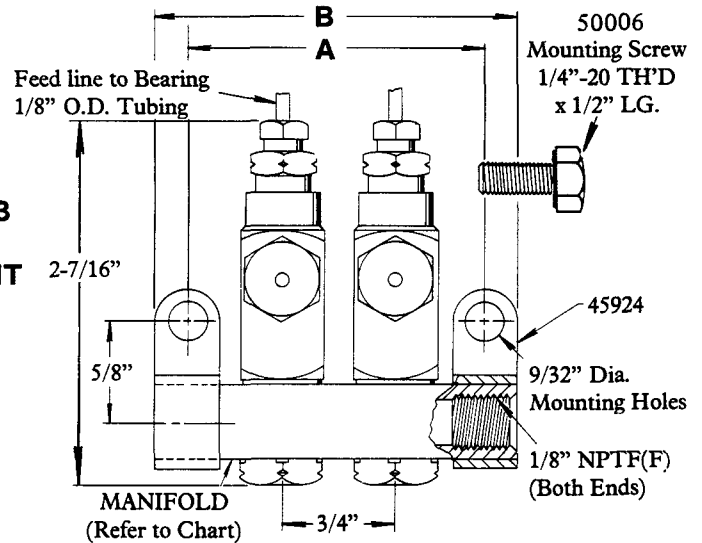
May be used in a system with SL-41, SL-42, or SL-44 Injectors.

MANIFOLD CHART

Model	Description	Dimensions		Manifold
		A	B	
83311-1	1 Unit	1-1/8"	1-5/8"	91863-1
83311-2	2 Unit	1-7/8"	2-3/8"	91864-1
83311-3	3 Unit	2-5/8"	3-1/8"	91865-1
83311-4	4 Unit	3-3/8"	3-7/8"	91866-1
83311-5	5 Unit	4-1/8"	4-5/8"	14361
83311-6	6 Unit	4-7/8"	5-3/8"	91976-1
83311-8	8 Unit	6-3/8"	6-7/8"	14291
83311-9	9 Unit	7-1/8"	7-5/8"	14330
83311-10	10 Unit	7-7/8"	8-3/8"	14312



**MODEL 83313
SERIES "F"
REPLACEMENT
INJECTOR**

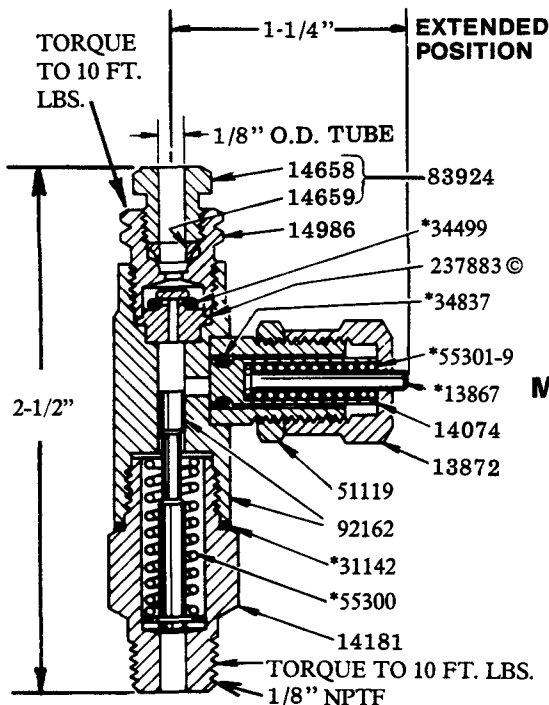


SERVICE PARTS

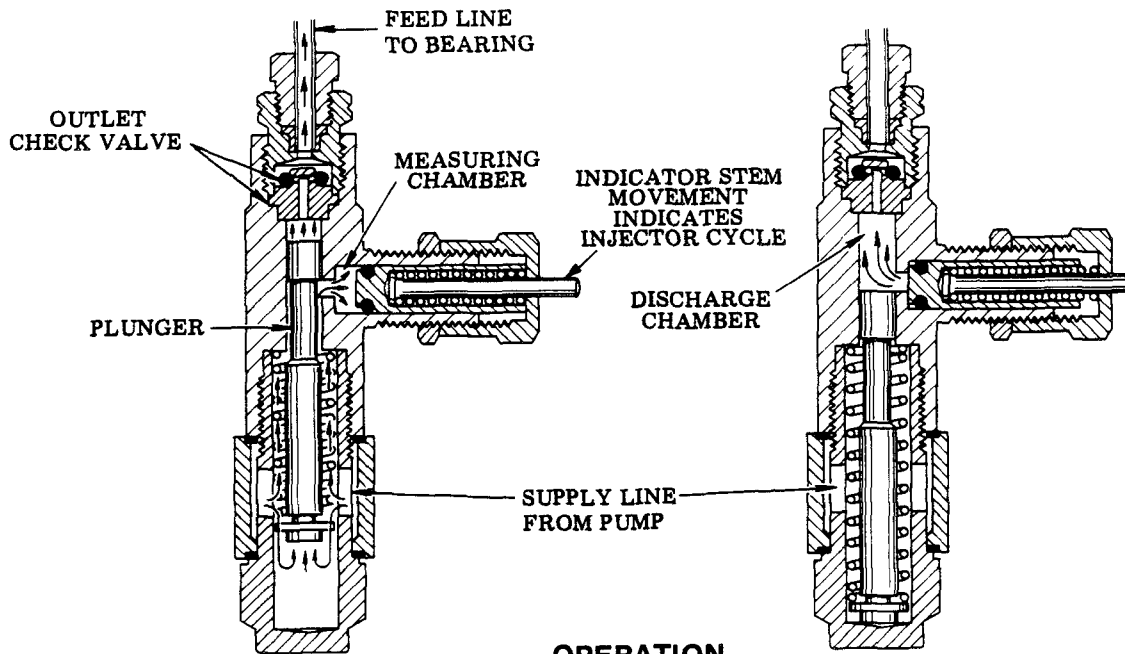
Part	Qty.	Description
*13867	1	Injector indicator
13871	1	Adapter
13872	1	Injector cap
14074	1	Packing retainer
14181	1	Injector inlet adapter
14658	1	Compression nut
14659	1	Ferrule
14986	1	Outlet body
237883	1	Check seat
*31138	2	Gasket
*31142	1	Gasket
*34499	1	O-ring
*34837	1	Packing
45924	2	Manifold mounting clip
50006	2	Mounting screw
51119	1	Lock nut
*55300	1	Spring
*55301-9	1	Spring
83924	1	Compression nut ass'y.
92162	1	Body & plunger ass'y.

*Included in 236471 Repair kit.

© Indicates Change



**MODEL 83535
SERIES "F"
SINGLE
INJECTOR**



OPERATION

SUPPLY LINE UNDER PRESSURE

(Normal operating pressure 850 psi)

Lubricant pressure moves plunger to force lubricant in the discharge chamber through the outlet check valve to the feed line.

Lubricant from supply line charges the measuring chamber.

SUPPLY LINE VENTED

(Vent pressure 150 psi maximum)

Plunger returns to normal position after supply line is vented, connecting measuring chamber to the discharge chamber. Flow from feed line is blocked by the outlet check valve.

Lubricant is automatically transferred from measuring chamber to discharge chamber.

INJECTOR ADJUSTMENT

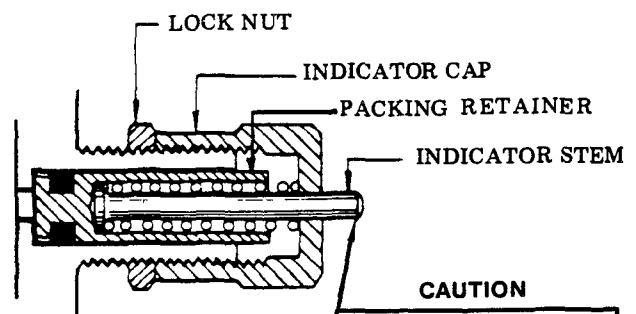
Injector output is controlled by the position of the indicator cap which limits the travel of the packing retainer.

With the indicator cap hand tightened against its stop, the lubricant output is decreased to a minimum.

Retracting the indicator cap two full turns permits a maximum of .003 cu. in. to be dispensed.

Retracting the indicator cap beyond two full turns will not increase the lubricant output.

When the injector has been adjusted for the proper lubricant output, the lock nut is tightened against the face of the indicator cap.



CAUTION
INDICATOR CAP MUST NOT EXTEND BEYOND RETRACTED POSITION OF INDICATOR STEM

RETAIN THIS INFORMATION FOR FUTURE REFERENCE

When ordering replacement parts, list: Part Number, Description, Model Number, and Series Letter.

LINCOLN provides a Distributor Network that stocks equipment and replacement parts.