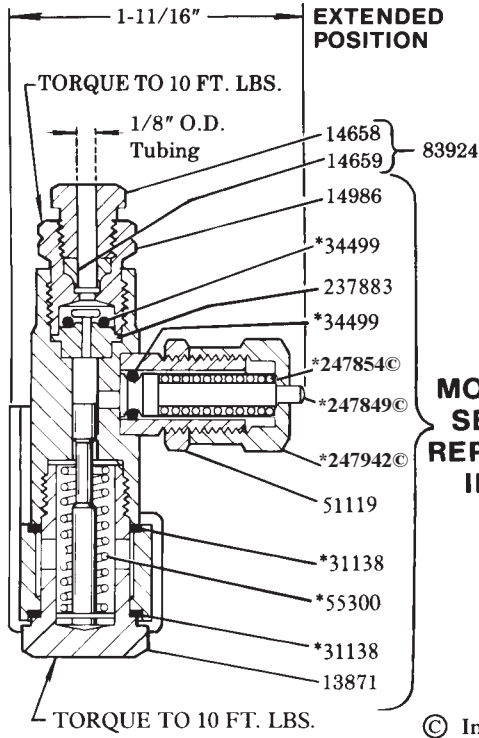


**FOR DISPENSING OIL ONLY**  
**SPECIFICATIONS**

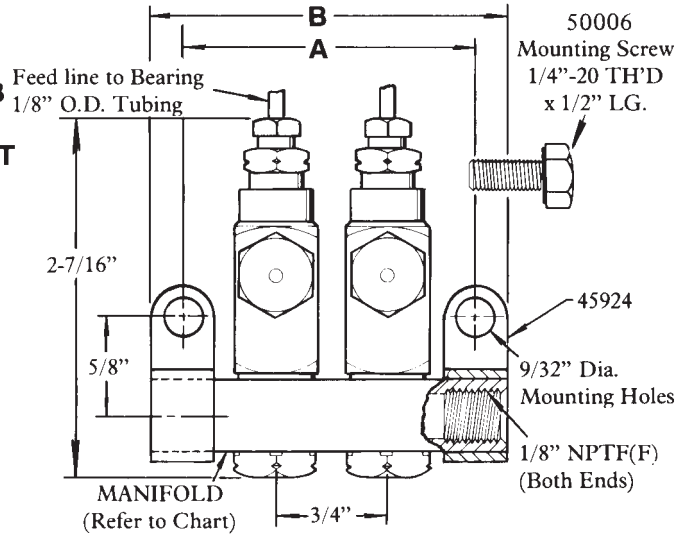
OUTPUT:.....Adjustable from .001 cu. in. to .003 cu. in.  
OPERATING PRESSURE: .....750 psi to 1000 psi  
RECOMMENDED OPERATING PRESSURE:.....850 psi  
RECHARGE PRESSURE:.....150 psi  
May be used in a system with SL-41, SL-42, or SL-44 Injectors

**MANIFOLD CHART**

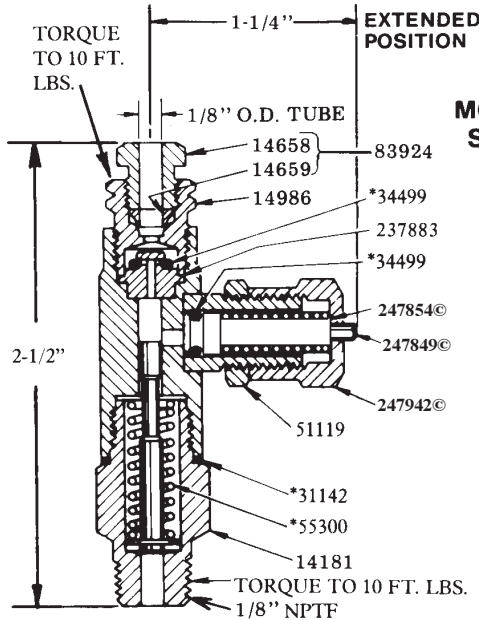
Model	Description	Dimensions		Manifold
		A	B	
83311-1	1 Unit	1-1/8"	1-5/8"	91863-1
83311-2	2 Unit	1-7/8"	2-3/8"	91864-1
83311-3	3 Unit	2-5/8"	3-1/8"	91865-1
83313-4	4 Unit	3-3/8"	3-7/8"	98166-1
83311-5	5 Unit	4-1/8"	4-5/8"	14361
83311-6	6 Unit	4-7/8"	5-3/8"	91976-1
83311-8	8 Unit	6-3/8"	6-7/8"	14291
83311-9	9 Unit	7-1/8"	7-5/8"	14330
83311-10	10 Unit	8-5/8"	9-1/8"	14312
83311-11	11 Unit	9-3/8"	9-7/8"	14809
83311-12	12 Unit	9-3/8"	9-7/8"	14331
83311-15	15 Unit	11-5/8"	12-1/8"	14253
83311-18	18 Unit	13-7/8"	14-3/8"	14332



**MODEL 83313**  
**SERIES "H"**  
**REPLACEMENT**  
**INJECTOR**



**NOTE:** Injectors from previous series can be improved with stenciled cap and single piece piston by use of 247954 upgrade kit.

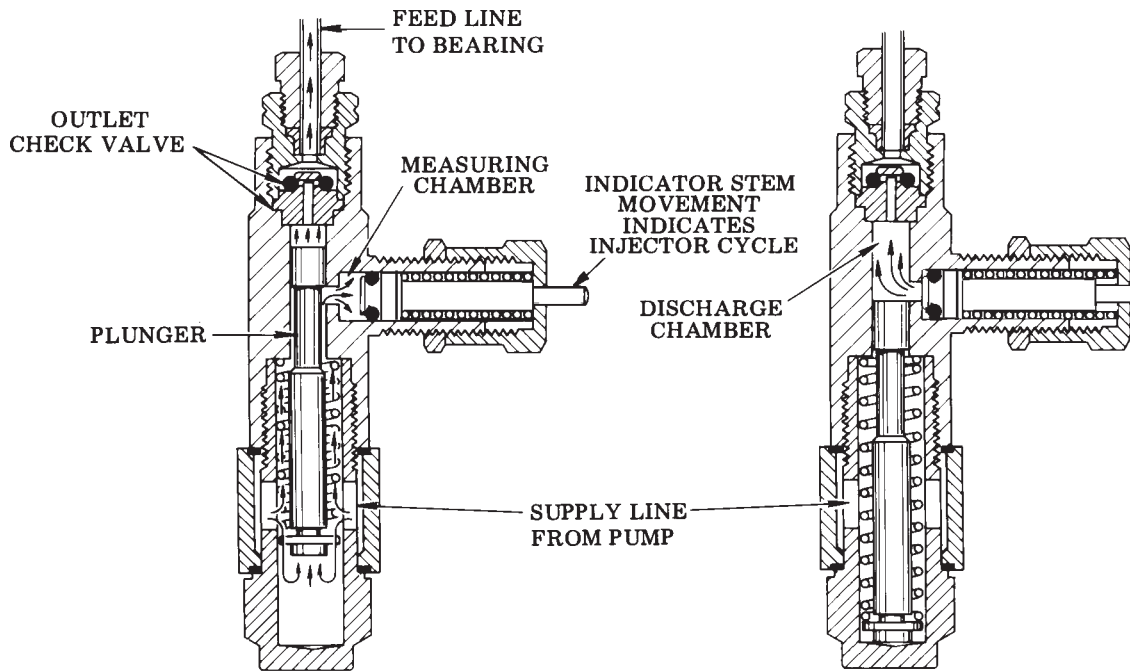


**MODEL 83535**  
**SERIES "H"**  
**SINGLE**  
**INJECTOR**

**SERVICEPARTS**

Model	Qty.	Description	Model	Qty.	Description
13871	1	Adapter	50006	2	Mounting screw
14181	1	Injector inlet adapter	51119	1	Lock nut
14658	1	Compression nut	14659	1	Lock nut
14659	1	Ferrule	+* 55300	1	Spring
14986	1	Outlet body	83924	1	Compression nut ass'y.
+ *31138	2	Gasket	+* 237883	1	Check seat
*31142	2	Gasket	+ 247849	1	Piston
+ *34499	2	O-ring (Nitrile)	+ *247854	1	Spring
45924	2	Manifold mounting clip	+ 247942	1	Injector cap

+Included in 247963 Repair Kit \*Included in 247954 Upgrade Kit



**OPERATION**

**SUPPLY LINE UNDER PRESSURE**

(Normal operating pressure 850 psi)

Lubricant pressure moves plunger to force lubricant in the discharge chamber through the outlet check valve to the feed line.

Lubricant from supply line charges the measuring chamber.

**SUPPLY LINE VENTED**

(Vent pressure 150 psi maximum)

Plunger returns to normal position after supply line is vented, connecting measuring chamber to the discharge chamber. Flow from feed line is blocked by the outlet check valve.

Lubricant is automatically transferred from measuring chamber to discharge chamber.

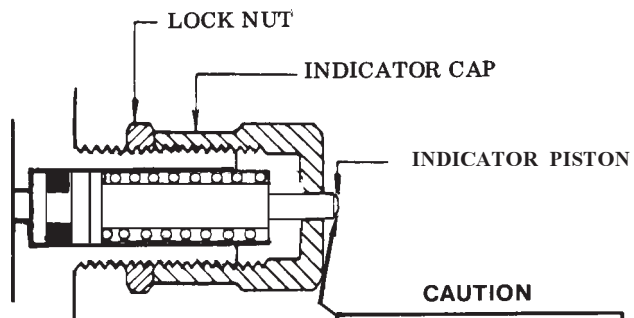
**INJECTOR ADJUSTMENT**

Injector output is controlled by the position of the indicator cap which limits the travel of the packing retainer.

With the indicator cap hand tightened against its stop, the lubricant output is decreased to a minimum.

Retracting the indicator cap two full turns permits a maximum of .003 cu. in. to be dispensed. Use the graduations on the cap as an aid in setting the indicator.

When the injector has been adjusted for the proper lubricant output, the lock nut is tightened against the face of the indicator cap.



**CAUTION**

INDICATOR CAP MUST NOT EXTEND BEYOND RETRACTED POSITION OF INDICATOR STEM.

**RETAIN THIS INFORMATION FOR FUTURE REFERENCE**

When ordering replacement parts, list: Part Number, Description, Model Number and Series Letter. LINCOLN provides a Distributor Network that stocks equipment and replacement parts.