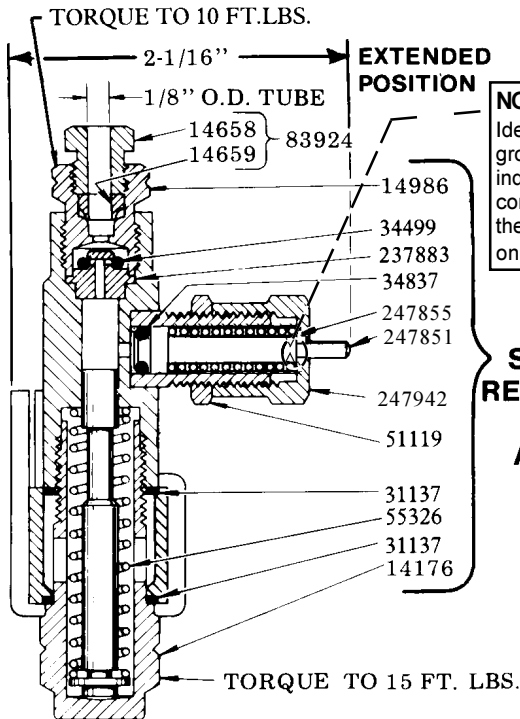


**FOR DISPENSING OIL ONLY**  
**SPECIFICATIONS**

OUTPUT:.....Adjustable from .001 cu. in. to .008 cu. in.  
OPERATING PRESSURE:.....750 psi to 1000 psi  
RECOMMENDED OPERATING PRESSURE:.....850 psi  
RECHARGE PRESSURE:.....150 psi  
May be used in a system with SL-41, SL-42, or SL-44 Injectors.

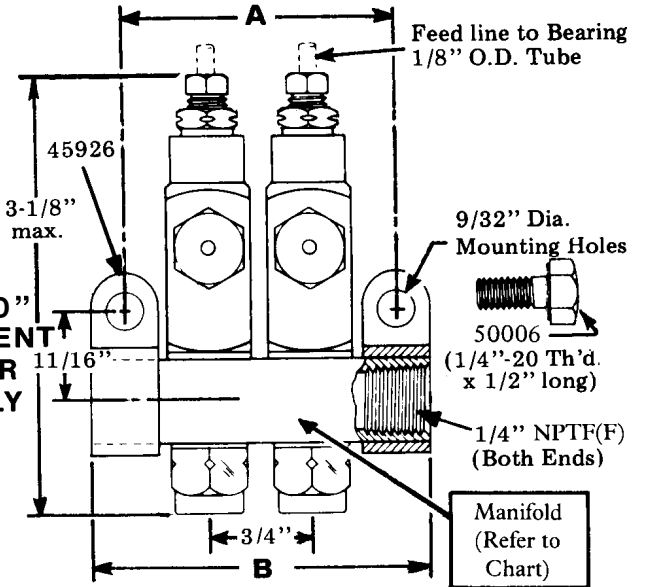
**MANIFOLD CHART**

| Model   | Description | Dimensions |        | Manifold |
|---------|-------------|------------|--------|----------|
|         |             | A          | B      |          |
| 83661-1 | 1 Unit      | 1-1/4"     | 1-3/4" | 91883-1  |
| 83661-2 | 2 Unit      | 2"         | 2-1/2" | 91884-1  |
| 83661-3 | 3 Unit      | 2-3/4"     | 3-1/4" | 91885-1  |
| 83661-4 | 4 Unit      | 3-1/2"     | 4"     | 91886-1  |



**NOTE:**  
Identification groove on piston indicator corresponds to these models only.

**MODEL 83660 SERIES "D" REPLACEMENT INJECTOR ASSEMBLY**



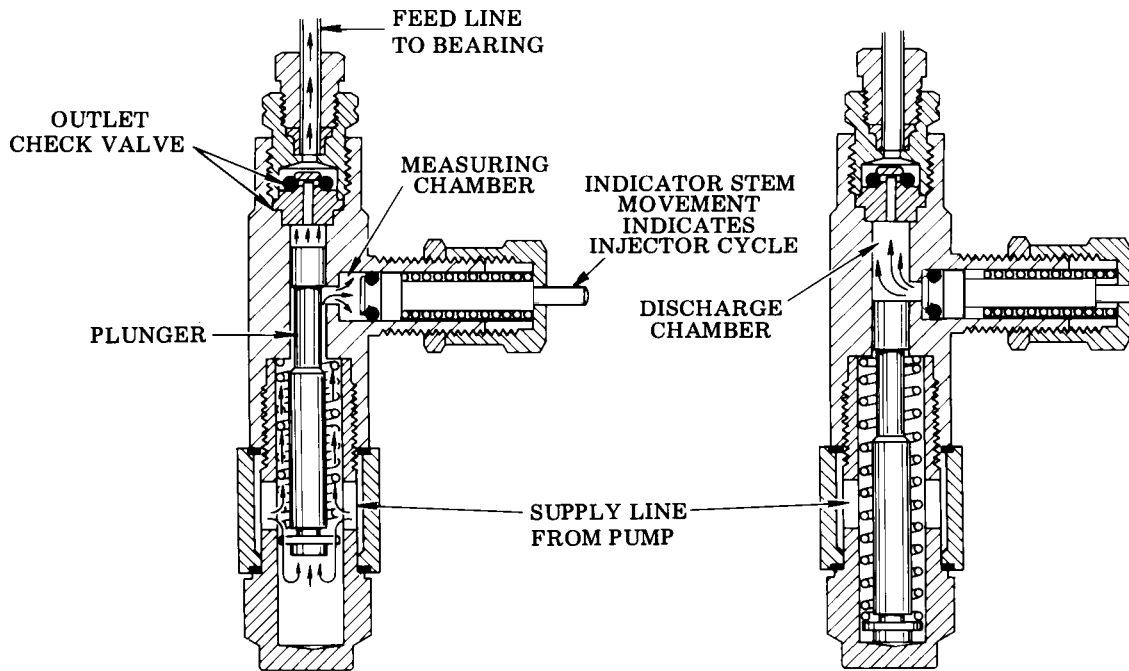
**SERVICE PARTS**

| Model    | Qty. | Description              |
|----------|------|--------------------------|
| 14176    | 1    | Adapter                  |
| 14658    | 1    | Compression nut          |
| 14659    | 1    | Ferrule                  |
| 14986    | 1    | Outlet body              |
| +*31137  | 2    | Gasket                   |
| +*34499  | 1    | O-ring (Nitrile)         |
| +*34837  | 1    | Packing (Nitrile)        |
| 45926    | 2    | Manifold clip            |
| 50006    | 2    | Mounting screw           |
| 51119    | 1    | Lock nut                 |
| +*55326  | 1    | Spring                   |
| 83924    | 1    | Compression nut assembly |
| +*237883 | 1    | Check seat               |
| +247851  | 1    | Piston                   |
| +*247855 | 1    | Spring                   |
| + 247942 | 1    | Injector Cap             |

**NOTE:** Injectors from previous series can be improved with stenciled cap and single piece piston by use of 247955 upgrade kit.

\* Included in 247962 Repair Kit

+ Included in 247955 Upgrade Kit



### OPERATION

#### SUPPLY LINE UNDER PRESSURE

(Normal operating pressure 850 psi)

Lubricant pressure moves plunger to force lubricant in the discharge chamber through the outlet check valve to the feed line.

Lubricant from supply line charges the measuring chamber.

#### SUPPLY LINE VENTED

(Vent pressure 150 psi maximum)

Plunger returns to normal position after supply line is vented, connecting measuring chamber to the discharge chamber. Flow from feed line is blocked by the outlet check valve.

Lubricant is automatically transferred from measuring chamber to discharge chamber.

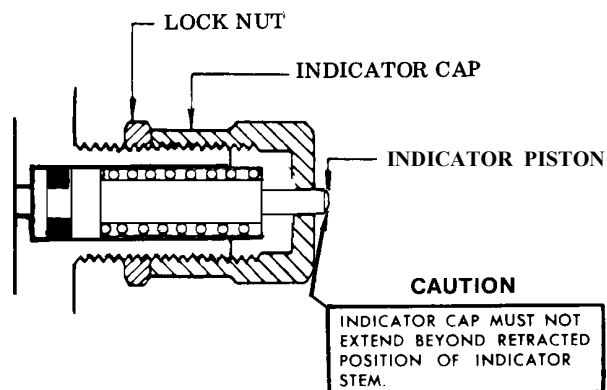
### INJECTOR ADJUSTMENT<sup>©</sup>

Injector output is controlled by the position of the indicator cap which limits the travel of the indicator piston.

To achieve the advertised min. output setting (.001 cu. in.) hand tighten the indicator cap against its stop then loosen approx. 1/2 turn. NOTE: any output setting below 1/2 turn should be monitored to verify actual output volume.

Retracting the indicator cap five full turns from the hand tight position permits a max. output of .008 cu. in. to be dispensed. Use the graduations on the cap as an aid in setting the indicator.

When the injector has been adjusted for the proper lubricant output, the lock nut is tightened against the face of the indicator cap.



© Indicates change

### RETAIN THIS INFORMATION FOR FUTURE REFERENCE

When ordering replacement parts, list: Part Number, Description, Model Number and Series Letter. LINCOLN provides a Distributor Network that stocks equipment and replacement parts.