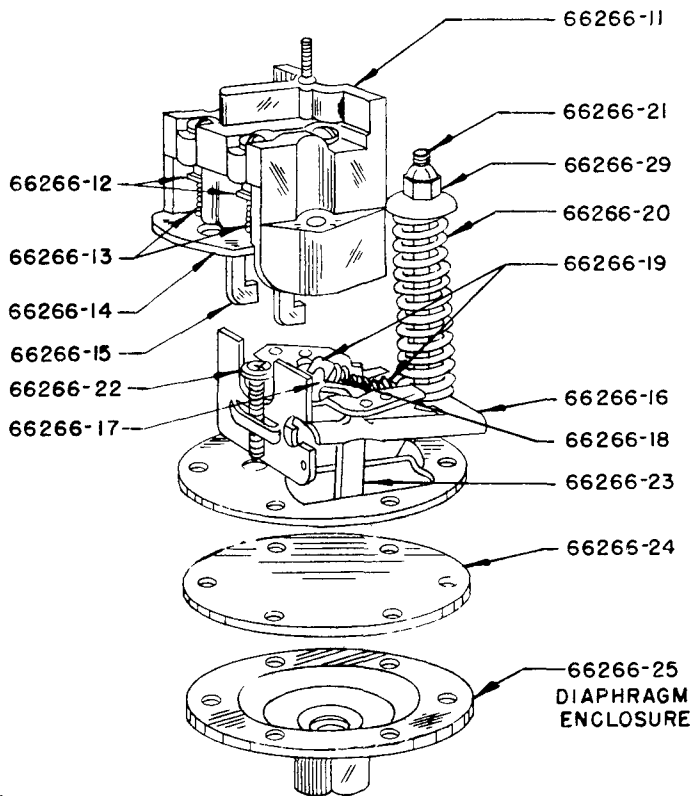
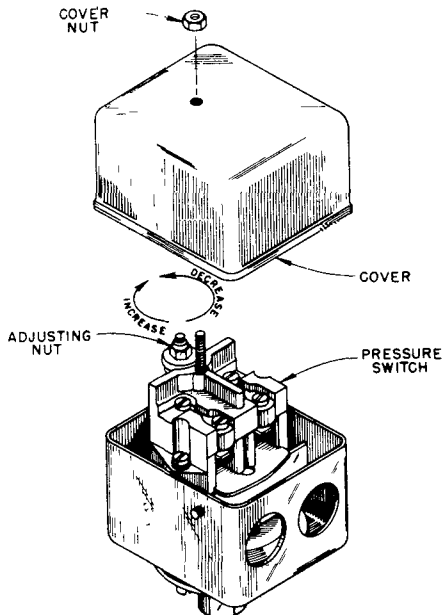




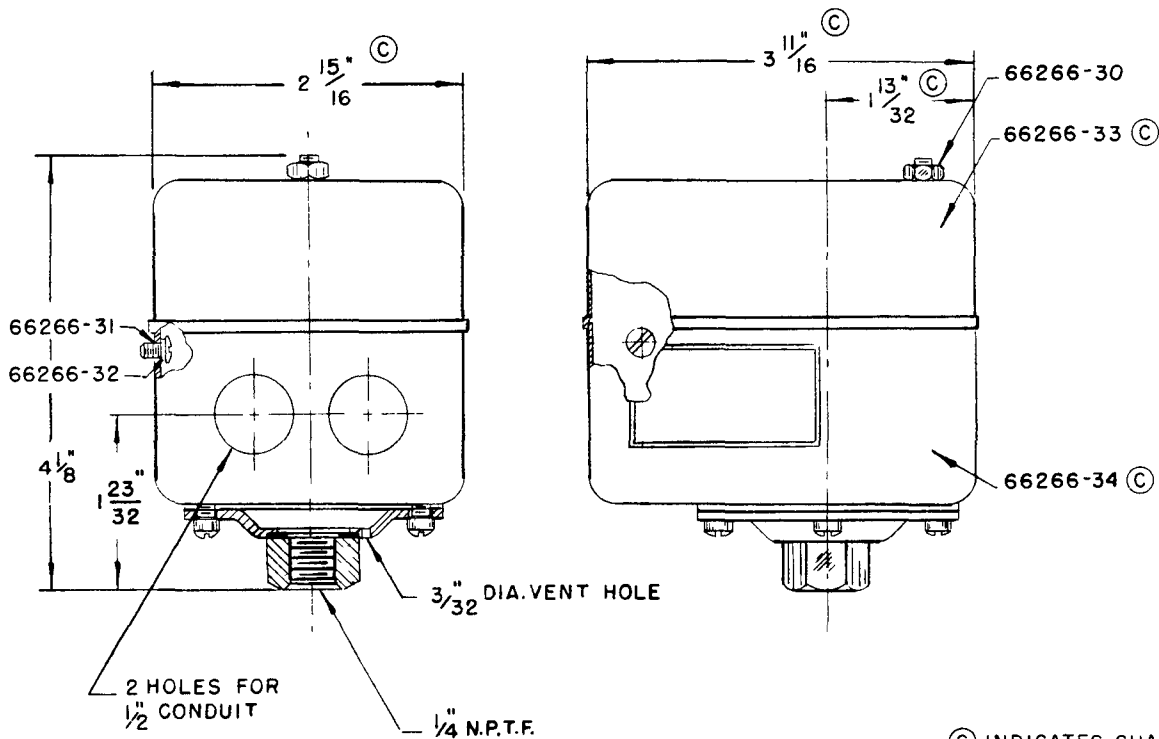
# PRESSURE SWITCHES

MODEL 66266 SINGLE THROW NORMALLY CLOSED DOUBLE POLE,  
DOUBLE BREAK SWITCH.



Pressure Switch is factory set:  
High Pressure Systems with Adapter - 2,500 P.S.I.G.  
Low Pressure Systems with Adapter - 850 P.S.I.G.  
When necessary, pressure switch can be adjusted.  
To increase pressure, turn Adjusting Nut clockwise.

High Pressure Systems with Adapter - 3,500 P.S.I.G. Max.  
Low Pressure Systems with Adapter - 1,000 P.S.I.G. Max.  
To lower the pressure turn Adjusting Nut counter-clockwise.



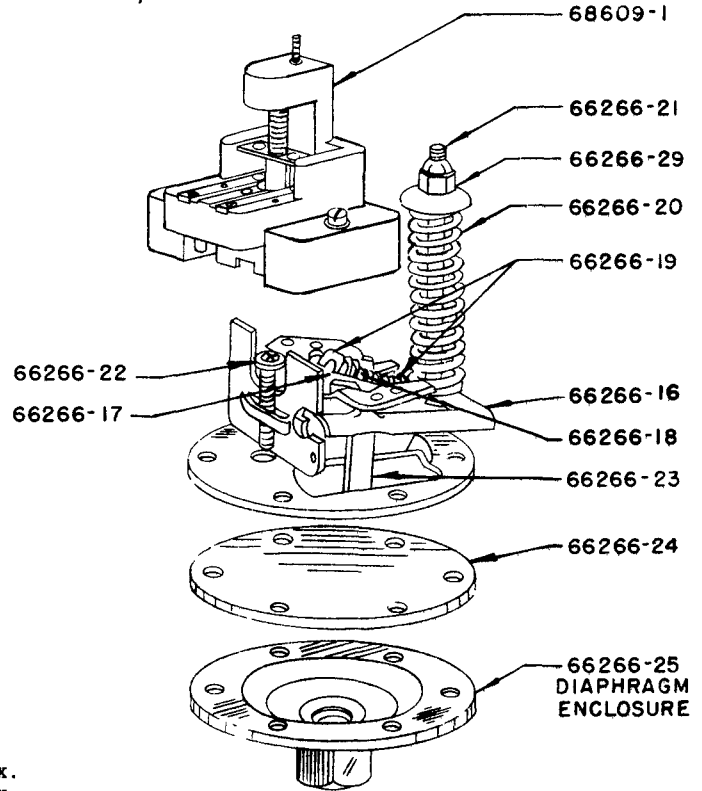
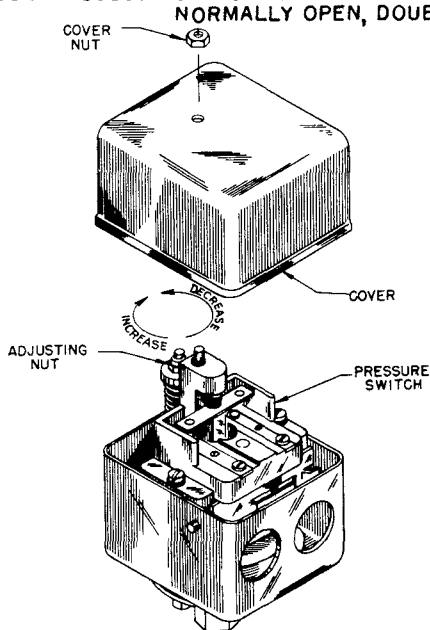
© INDICATES CHANGE

**LINCOLN ST. LOUIS**  
4010 GOODFELLOW BLVD • ST. LOUIS, MO 63120 • (314) 383-5900



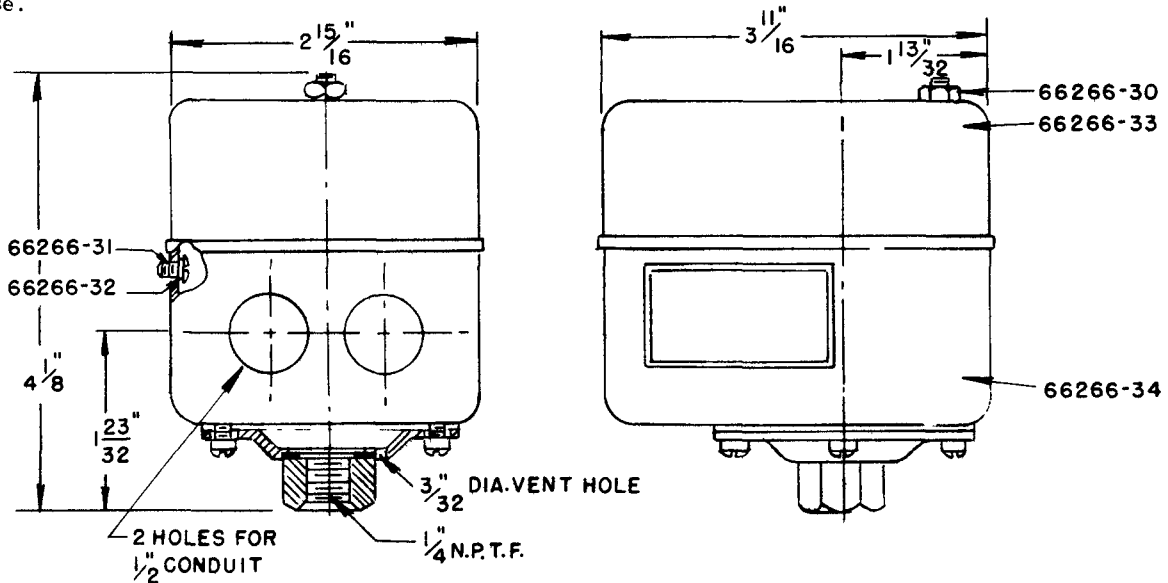
**SECTION - C8**  
**PAGE - 9D**

**MODEL 68609 SWITCH CONTACTS ARE SINGLE POLE, SINGLE THROW, NORMALLY OPEN, DOUBLE BREAK.**



Pressure Switch is factory set:  
 High Pressure Systems with Adapter - 2,500 P.S.I.G.  
 Low Pressure Systems with Adapter - 850 P.S.I.G.  
 When necessary, Pressure Switch can be adjusted.  
 To increase pressure, turn Adjusting Nut clockwise.

High Pressure Systems with Adapter - 3,500 P.S.I.G. Max.  
 Low Pressure Systems with Adapter - 1,000 P.S.I.G. Max.  
 To lower the pressure turn Adjusting Nut counter-clockwise.



**REPAIR PARTS LIST**

Part No.	Description	Part No.	Description
66266-11	Contact Unit Complete	66266-22	Differential Screw
66266-12	Moveable Contacts	66266-23	Stirrup Plate
66266-13	Spring	66266-24	Diaphragm
66266-14	Pull Rod Guide	66266-25	Diaphragm Enclosure
66266-15	Pull Rod	66266-29	Main Spring Adjusting Nut
66266-16	Lever	66266-30	Hex. Nut
66266-17	Toggle	66266-31	Ground Screw
66266-18	Toggle Spring	66266-32	Lockwasher
66266-19	Toggle Spring Seat	66266-33	Cover
66266-20	Main Spring	66266-34	Case
66266-21	Post	68609-1	Contact Unit Complete

**RETAIN THIS INFORMATION FOR FUTURE REFERENCE**

When ordering Replacement Parts, List Part Numbers, Description, Model Number, and Series Letter.

LINCOLN ST. LOUIS Provides a Distributor Network that stocks Equipment and Replacement Parts.  
 Repairs by Authorized Service Depts. List furnished upon request.