

# BARE REEL

HEAVY DUTY  
LARGE HOSE CAPACITY

# Models 82206, 82205-1

SERIES "N"

# 84690, 84690-1

SERIES "A"

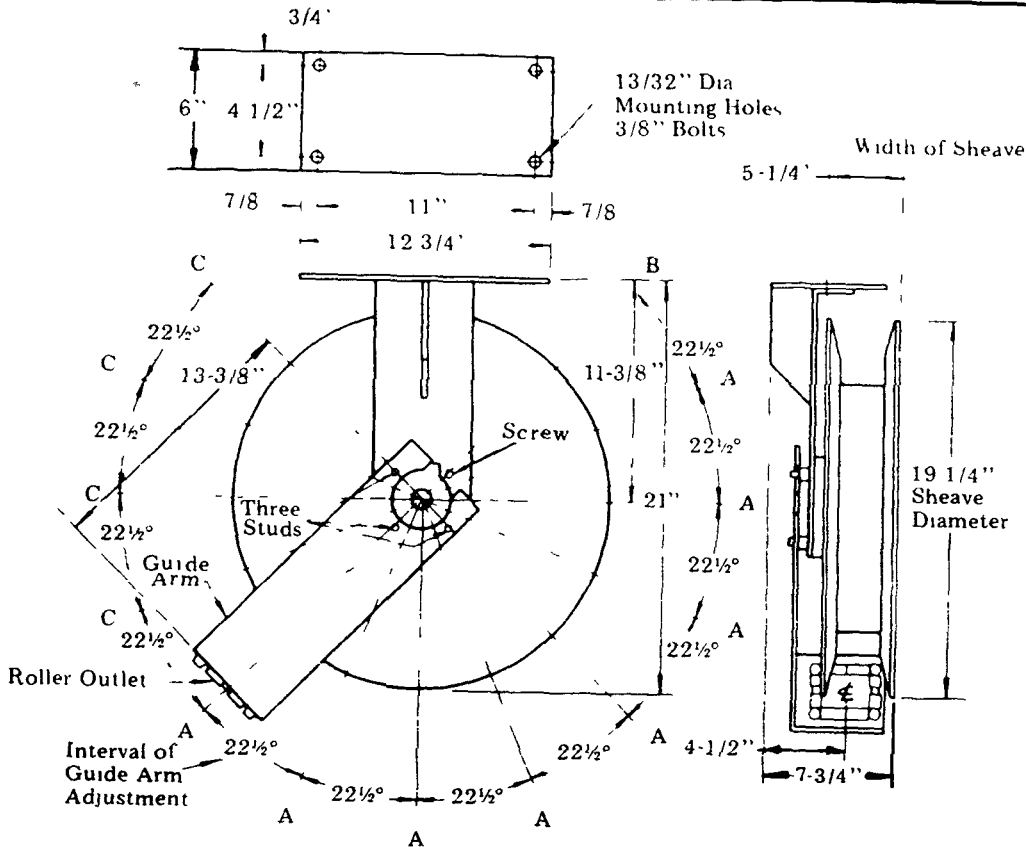


FIG. 1  
HOSE REEL  
DIMENSIONS

## INSTALLATION

The guide arm may be positioned in  $22\frac{1}{2}^\circ$  increments as shown above. For ease of operation and increased hose life, the guide arm should be positioned to minimize hose flexure as the delivery hose passes thru the roller outlet.

Three studs must be used to securely attach the guide arm. In some cases it may be necessary to change the position of the hex head screw and one stud in order to position the guide arm.

The hose clamp must be relocated if the guide arm is in position "B" or "C" in the illustration above. Refer to Bare Reel dwg for hose clamp locations.

## DIAGRAMATIC VIEWS

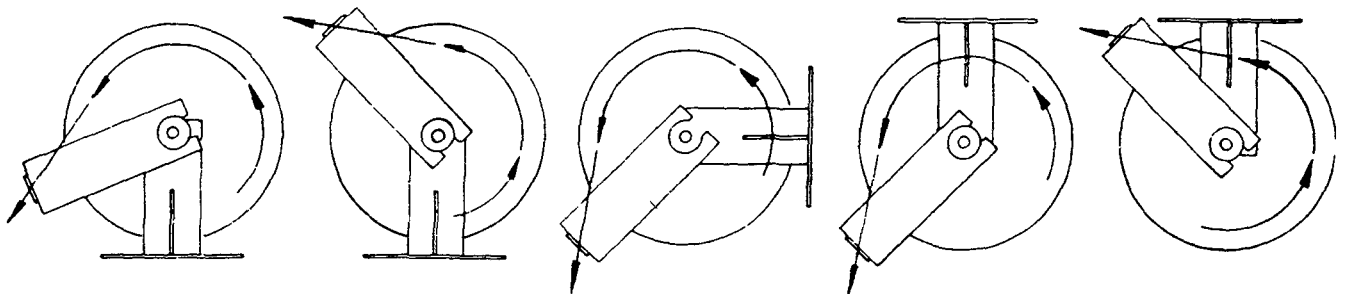


FIG. 2  
LUBROVAN  
INSTALLATION  
CONTRACTOR TYPE

FIG. 3  
FLOOR  
INSTALLATION

FIG. 4  
WALL, POST  
OR ABOVE BENCH  
INSTALLATION

FIG. 5  
CEILING  
INSTALLATION  
OR FOR USE  
WITH LUBREEL  
SUPPORT STAND

FIG. 6  
UNDER BENCH  
INSTALLATION

NOTE: Arrow indicates direction of hose as it is withdrawn from hose reel

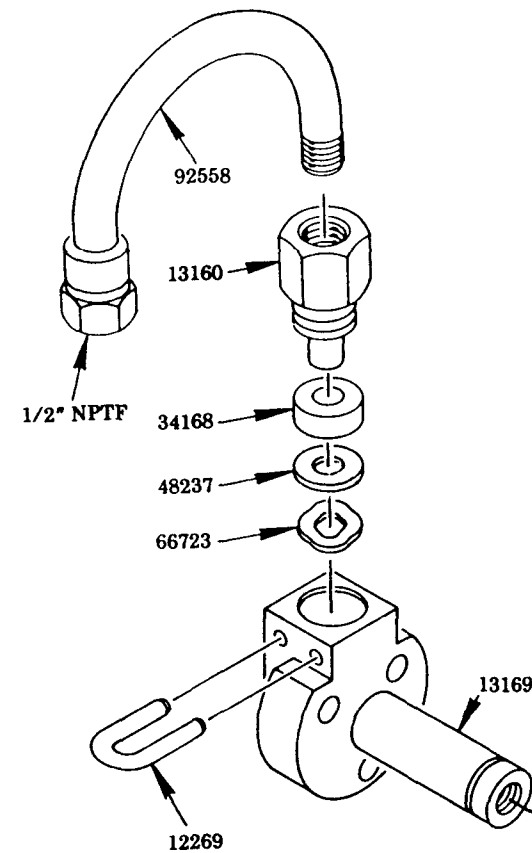
**LINCOLN**  
A PENTAIR COMPANY

One Lincoln Way  
St. Louis, MO 63120-1578  
Customer Service, (314) 679-4300

SECTION - **E35**  
PAGE - **17S**

MODEL	POWER SPRING	MAX. HOSE CAPACITY
82206	57082	50' of Type 73 Hose
82205-1	57082	50' of Type 73 Hose
84690	57083	40' of Type 73 Hose
84690-1	57083	40' of Type 73 Hose

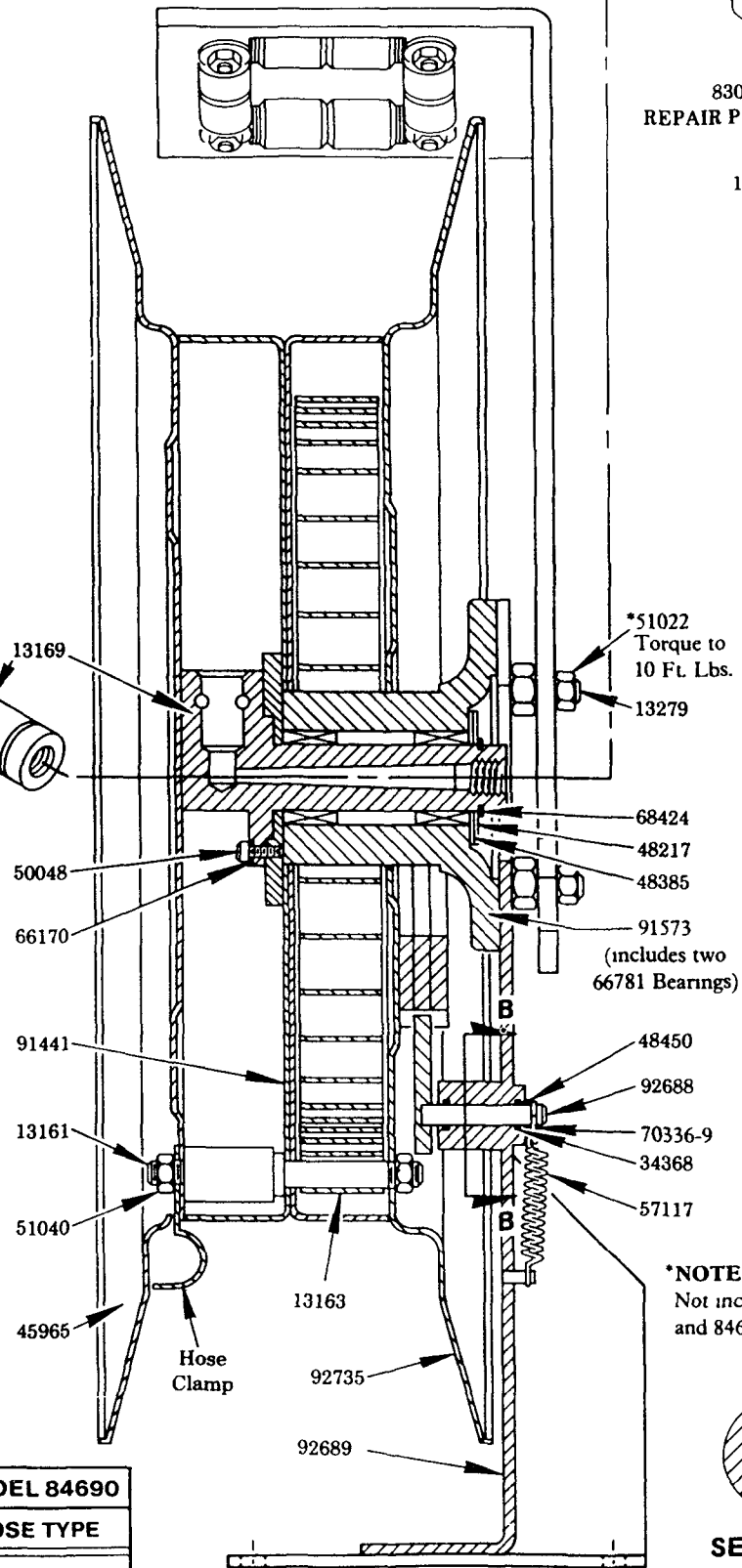
# Models 82206, 82205-1 84690 & 84690-1 BARE REELS



**CAUTION**  
RELIEVE ALL POWER SPRING TENSION BEFORE REMOVING SPRING HOUSING COVER BY RELEASING LATCH AND MANUALLY RESTRAINING UNWIND SPEED OF REEL. SHEAVE ASSEMBLIES SHOULD BE SEPARATED WHEN IN A HORIZONTAL POSITION WITH 45965 DOWN ON A FLAT SURFACE.

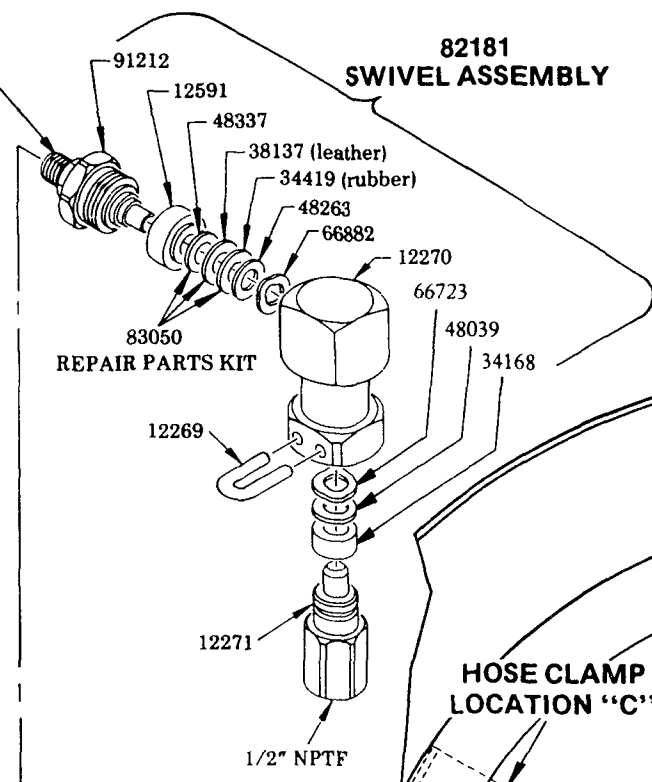
**NOTE:**  
The power spring is restrained by a steel retainer band. For added safety, the power spring should be wired securely to the retainer band in at least three places before removal from the spring housing.

	MODEL 82206	MODEL 84690
*HOSE CLAMP	HOSE TYPE	HOSE TYPE
45816	73	73
45817	72A & 75	72A & 75
45818	78	



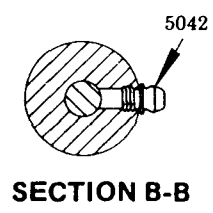
**SECTION A-A**

Use pipe compound on threads before installing swivel to hose reel.

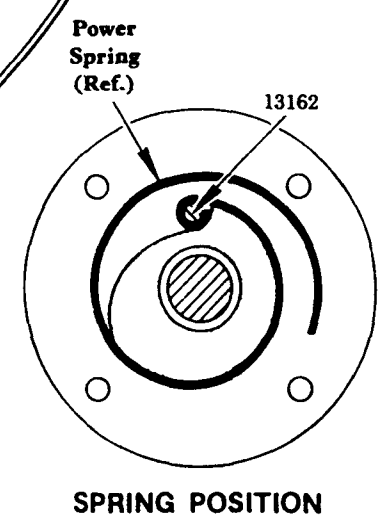
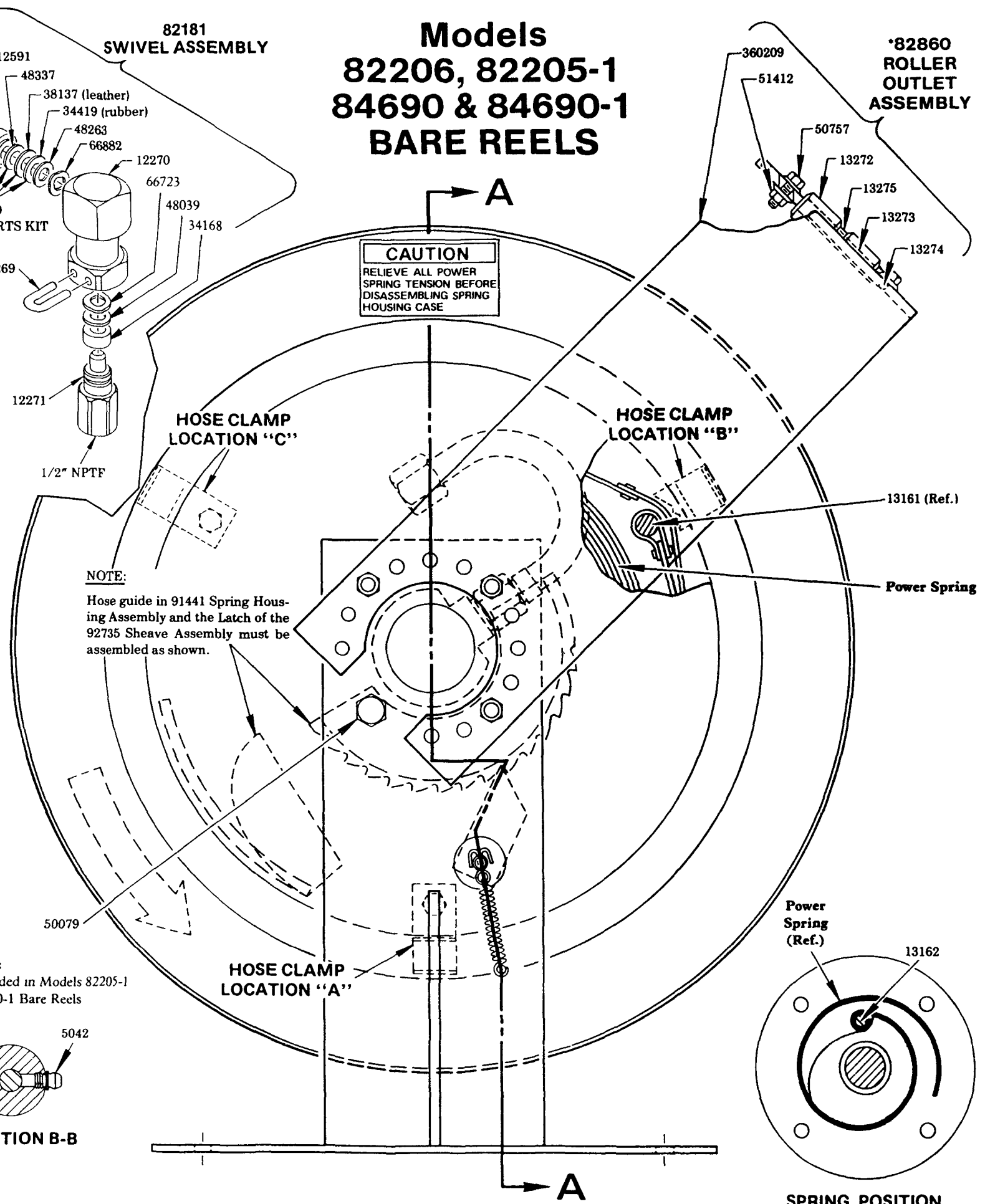


**NOTE:**  
Hose guide in 91441 Spring Housing Assembly and the Latch of the 92735 Sheave Assembly must be assembled as shown.

\*NOTE 2:  
Not included in Models 82205-1 and 84690-1 Bare Reels

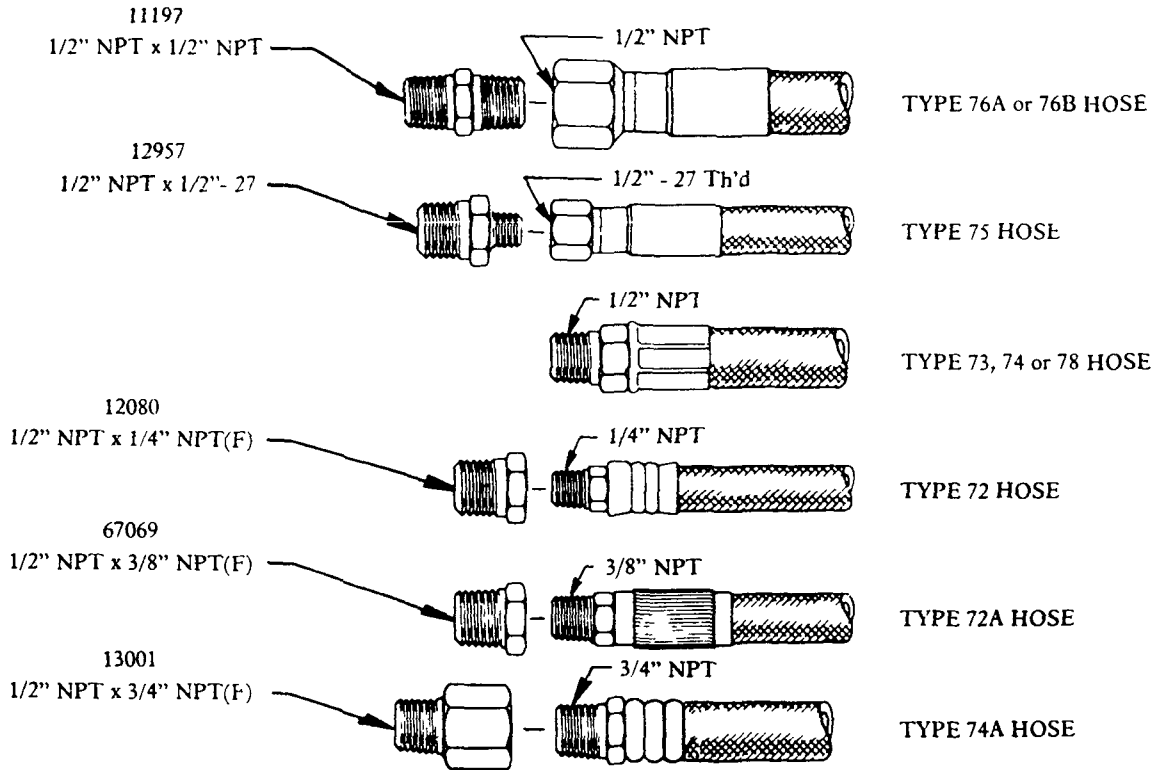


**SECTION B-B**



**SPRING POSITION**

**ADAPTERS FOR DELIVERY AND CONNECTING HOSES  
NOT FURNISHED WITH BARE REEL - MUST BE ORDERED SEPARATELY**



**Cabinet and Mounting Rails:**  
Refer to Service Manual,  
Section E35, Page 38 Series.

**SERVICE PARTS**

PART	QUAN.	DESCRIPTION	PART	QUAN.	DESCRIPTION
5042	1	Lube fitting	48385	4	Shim washer
12269	2	Keeper	48450	1	Washer
12270	1	Swivel body	50048	3	Screw
12271	1	Adapter	50079	1	Screw
12591	1	Retainer	50757	4	Bolt
13160	1	Adapter	51022	3	Nut
13161	3	Stud	51040	6	Nut
13162	1	Spring pin	51412	4	Nut
13163	3	Spacer	57117	1	Spring
13169	1	Shaft	66170	3	Lockwasher
13272	8	Roller	66723	2	Spring washer
13273	2	Pin	66781	2	Bearing
13274	2	Pin	66882	1	Spring washer
13275	2	Spacer	68424	1	Retaining ring
13279	3	Stud	70336-9	1	Cotter pin
34168	2	Packing	82181	1	Swivel assembly
34368	2	O-ring	82860	1	Roller outlet assembly
34419	1	Packing (rubber)	91212	1	Swivel stud
38137	1	Packing (leather)	91441	1	Spring housing
45965	1	Sheave half	91573	1	Arbor
48039	1	Washer	92558	1	Tube & adapter
48217	1	Washer	92688	1	Pawl
48237	1	Washer	92689	1	Support assembly
48263	1	Washer	92735	1	Sheave
48337	1	Washer	360209	1	Roller support arm

**RETAIN THIS INFORMATION FOR FUTURE REFERENCE**

When ordering replacement parts, list: Part Number, Description, Model Number, and Series Letter.

LINCOLN provides a Distributor Network that stocks equipment and replacement parts.  
A list of Authorized Service Departments will be furnished upon request.